

A020



Material

Steel, zinc plated.

Technical Notes

Dimension "h" is the distance by which the cam is off-set.
Available with and without "projection". Projection ensures correct location of cam, and prevents turning over 45°.

Tips

Suitable for all Flexi-System quarter turn fasteners, for specific suitability see technical notes of specific quarter turn fastener. For other cams see A022 to A028 page 53.

Important Notes

For correct cam selection use the following formula:

$$h = Df - Ql$$

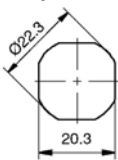
where;

h = required Cam off-set.

Df = depth of cabinet or enclosure frame.

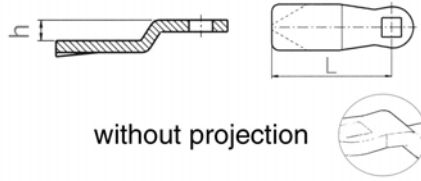
Ql = body length of quarter turn fastener to be used.

Flexi System - cut out

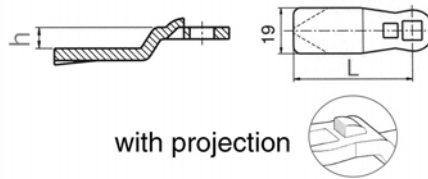


Single Point Cams, Flexi-System

for quarter turn fasteners



without projection



with projection

Order No. with projection	Order No. w/o projection	h	L
A020.AC300	-	0	35
A020.AC302	-	2	35
A020.AC304	-	4	35
A020.AC310	-	10	35
A020.AC392	-	-2	35
A020.AC400	A020.AC420	0	45
A020.AC402	-	2	45
A020.AC403	A020.AC423	3	45
A020.AC404	A020.AC424	4	45
A020.AC406	A020.AC426	6	45
A020.AC408	-	8	45
A020.AC410	-	10	45
A020.AC412	A020.AC432	12	45
A020.AC414	-	14	45
A020.AC492	-	-2	45
A020.AC494	-	-4	45
A020.AC500	A020.AC520	0	51
A020.AC503	A020.AC523	3	51