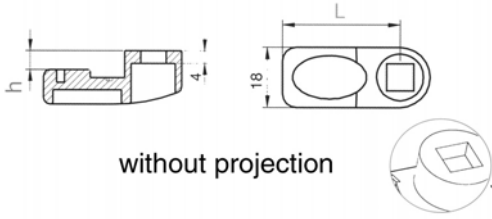
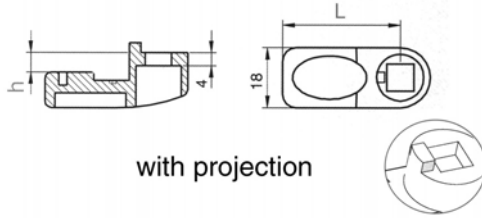


Single Point Cams, Plastic, Flexi-System

for quarter turn fasteners



without projection

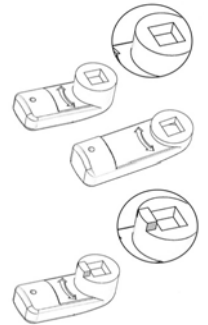


with projection

Order No. with projection	Order No. w/o projection	h	L
A022.AC300	A022.AC320	0	35
A022.AC306	A022.AC326	6	35
A022.AC404	A022.AC424	4	45



A022



Material

Plastic, black.

Technical Notes

Dimension "h" is the distance by which the cam is off-set.

Available with and without "projection".

Projection ensures correct location of cam, and prevents turning over 45°.

Tips

Suitable for all Flexi-System quarter turn fasteners, for specific suitability see technical notes of specific quarter turn fastener.

For other cams see A020 to A028 page 52.

Important Notes

For correct cam selection use the following formula:

$$h = Df - QL$$

where;

h = required Cam off-set.

Df = depth of cabinet or enclosure frame.

QL = body length of quarter turn fastener to be used.

Flexi System - cut out

