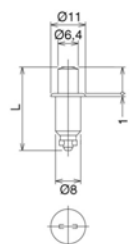


Panel Compression Latches

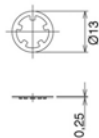
button version, large



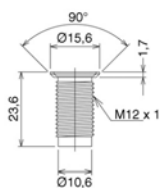
E217



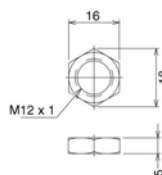
Fastener



Retaining Ring



Receptacle



Receptacle Fixing Nut



Material

Fastener, Receptacle and Fixing Nut: polyacetal, black.
Retaining Ring: steel.

Technical Notes

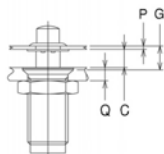
Ideal for fixing of panels and enclosure covers a wide variety of applications; lighting, electrical enclosures, access panels etc.

Tips

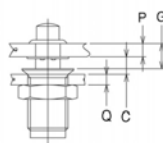
See also small flush version E216, and large flush version E216. For installation guidance see diagrams below. Other sizes for panels up to 17mm thick available on request, subject to minimum quantity requirements.

Order No.	G Panel Thickness	L	Holding Force Kgf	g
E217.AC013	1,2 to 2,8	23,5	15	6
E217.AC023	2,8 to 4,4	25,1	15	6
E217.AC033	4,4 to 6,0	26,7	15	6

Installation Dimensions:



P (panel thickness) = 0 to 2,2 mm
Q (retaining wall thickness) = 2,2 to 12 mm
 $G = P + C + 0,7$



P (panel thickness) = over 2,3 mm
Q (retaining wall thickness) = 0,6 to 9,7 mm
 $G = P + C - 1,4$

Fastener Installation:

