

# Touch Latches

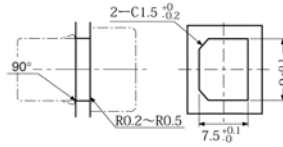
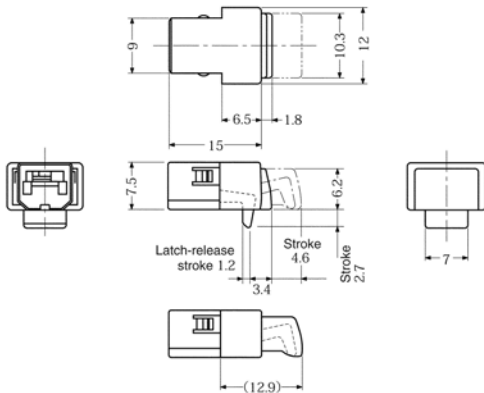
non-magnetic



# E260



PUSH TO CLOSE LATCHES



bore dimensions

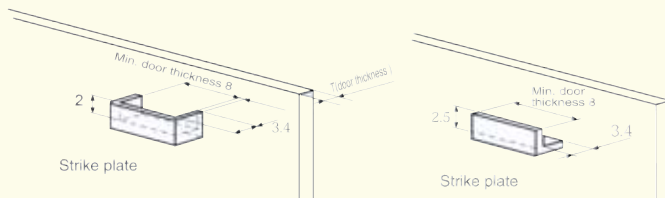
**Material**

Body: polycarbonate.

**Technical Notes**

No catch plate supplied.

Order No.	Retaining Force Kgf	g
E260.AC020	1	1,1

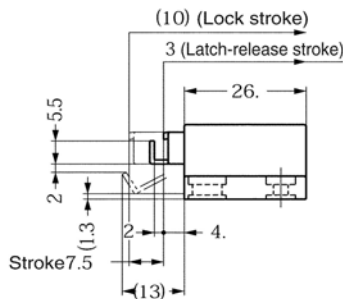
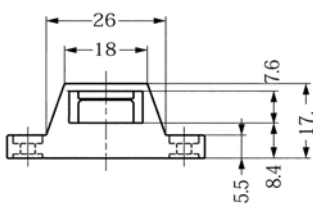
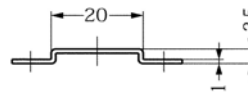
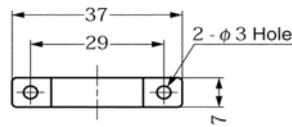
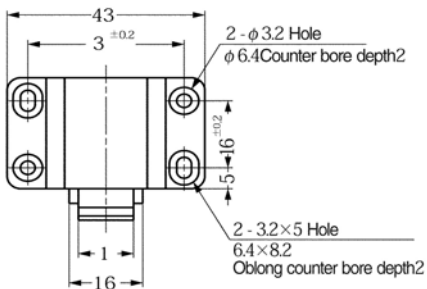


# Touch Latches

non-magnetic



# E280



**Material**

Housing: ABS plastic.

Slide: Polyacetal.

Strike, Arm and Yoke: Steel.

**Technical Notes**

Screws not included.

Order No.	Finish	Retaining Force Kgf	g
E280.AC020	Black	10	16,3
E280.AC030	Brown	10	16,3

