

J058

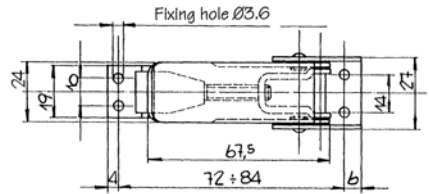
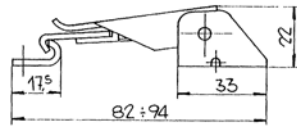


Technical Notes

Supplied with counter strike.
Draw length adjustable through turns of threaded draw rod, giving 12mm length of adjustment.

Draw Latches

adjustable



Order No.	Finish	L	W	H	Max. Load N	Max. Tension N	g
J058.AC001	Nickel plated steel	82 to 94	27	22	1000	2000	75

J060

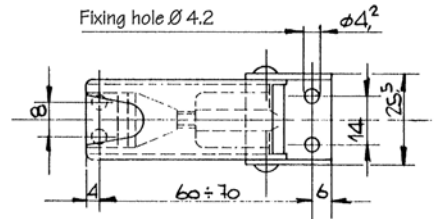
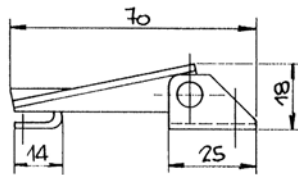


Technical Notes

Supplied with counter strike.
Draw length adjustable through turns of threaded draw rod, giving 10mm length of adjustment.

Draw Latches

adjustable, stainless steel



Order No.	Finish	L	W	H	Max. Load N	Max. Tension N	g
J060.AC008	Yellow zinc plated	60 to 70	25	18	1000	2000	55
J060.AC030	Stainless steel	60 to 70	25	18	1000	2000	55

J062

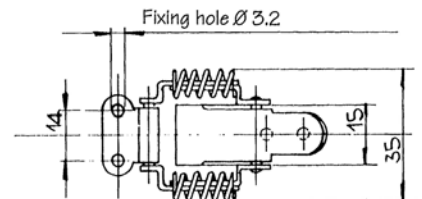
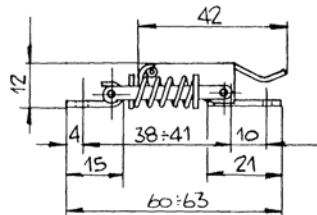


Technical Notes

Supplied with counter strike.

Draw Latches

with tension springs, stainless steel



Order No.	Finish	L	W	H	Max. Load N	Max. Tension N	g
J062.AC008	Yellow zinc plated	60 to 63	35	12	500	1500	35
J062.AC030	Stainless steel	60 to 63	35	12	500	1500	35