

# Q010



**Material**  
Polyacetal, white.

**Technical Notes**  
110° operating angle, additional 5° dead angle at start/end position.  
Tested to over 50,000 cycles.  
Temperature range 0° to 40°C.

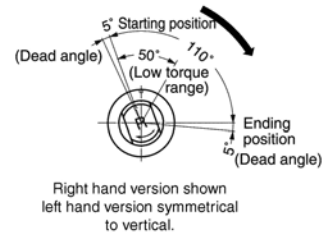
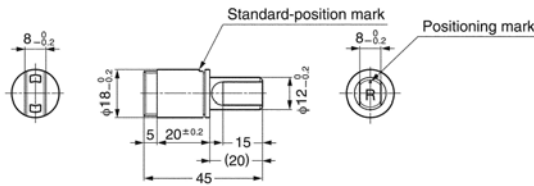
**Tips**  
Provide smooth and quiet motion of lids, covers etc. Ideal for special purpose machines, air conditioning units etc.

**Important Notes**  
**Torque calculation:**  
 $T \text{ (Kgf/cm)} = W \text{ (Kg)} \times 0.5 \times H \text{ (cm)}$ .  
W (Kg) is weight of cover/lid, H (cm) is distance between fulcrum and cover/lid's opening edge.

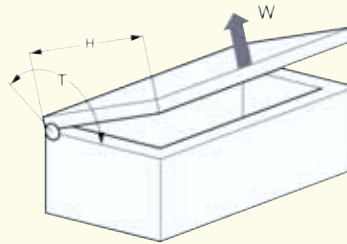
**Referral**  
For complete torque damper hinge see Q100 page 206.

## Torque Dampers

unidirectional



Order No.	Type	Operating Angle	Torque Kgf/cm
Q010.AC010	Right	110°	10
Q010.AC015	Right	110°	15
Q010.AC020	Right	110°	20
Q010.AC110	Left	110°	10
Q010.AC115	Left	110°	15
Q010.AC120	Left	110°	20



# Q015



**Material**  
Zinc alloy.

**Technical Notes**  
110° operating angle, additional 4° dead angle at start/end position.  
Tested to over 100,000 cycles.  
Temperature range 0° to 40°C.

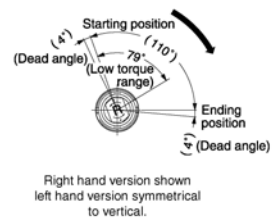
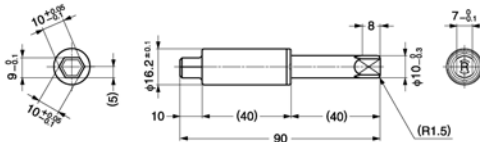
**Tips**  
Provide smooth and quiet motion of lids, covers etc. Ideal for special purpose machines, air conditioning units etc.

**Important Notes**  
**Torque calculation:**  
 $T \text{ (Kgf/cm)} = W \text{ (Kg)} \times 0.5 \times H \text{ (cm)}$ .  
W (Kg) is weight of cover/lid, H (cm) is distance between fulcrum and over/lid's opening edge.

**Referral**  
For complete torque damper hinge see Q100 page 206.

## Torque Dampers

unidirectional



Order No.	Type	Operating Angle	Torque Kgf/cm
Q015.AC025	Right	110°	25
Q015.AC040	Right	110°	40
Q015.AC125	Left	110°	25
Q015.AC140	Left	110°	40