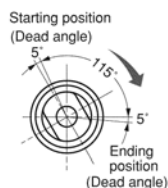
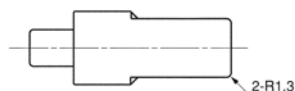
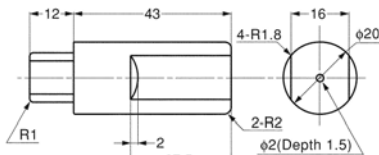
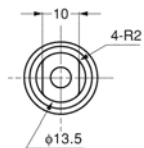


## Torque Dampers

Wixroyd

# Q040



### Material

Body: AISI 304 stainless steel.  
Pin: PBT plastic. White for counter clockwise version, grey for clockwise version.

### Technical Notes

115° operating angle, additional 5° dead angle at start/end position.  
Tested to over 100,000 cycles.  
Temperature range -20° to 60°C.

### Tips

Provide smooth and quiet motion of lids, covers etc. Ideal for special purpose machines, air conditioning units etc.

### Important Notes

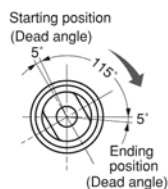
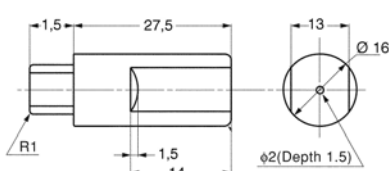
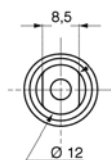
**Torque calculation:**  
 $T \text{ (Kgf/cm)} = W \text{ (Kg)} \times 0.5 \times H \text{ (cm)}$ .  
W (Kg) is weight of cover/lid, H (cm) is distance between fulcrum and cover/lid's opening edge.

Order No.	Type	Pin Colour	Operating Angle	Torque Kgf/cm	g
Q040.AC010	Counter Clockwise	White	115°	15 - 25	38
Q040.AC020	Counter Clockwise	White	115°	25 - 35	38
Q040.AC110	Clockwise	Grey	115°	15 - 25	38
Q040.AC120	Clockwise	Grey	115°	25 - 35	38

## Torque Dampers compact

Wixroyd

# Q042



### Material

Body: AISI 304 stainless steel.  
Pin: PBT plastic. White for counter clockwise version, grey for clockwise version.

### Technical Notes

115° operating angle, additional 5° dead angle at start/end position.  
Tested to over 100,000 cycles.  
Temperature range -20° to 60°C.

### Tips

Provide smooth and quiet motion of lids, covers etc. Ideal for special purpose machines, air conditioning units etc.

### Important Notes

**Torque calculation:**  
 $T \text{ (Kgf/cm)} = W \text{ (Kg)} \times 0.5 \times H \text{ (cm)}$ .  
W (Kg) is weight of cover/lid, H (cm) is distance between fulcrum and cover/lid's opening edge.

Order No.	Type	Pin Colour	Operating Angle	Torque Kgf/cm	g
Q042.AC010	Counter Clockwise	White	115°	10,2 - 17,3	16
Q042.AC020	Counter Clockwise	White	115°	17,3 - 25,5	16
Q042.AC110	Clockwise	Grey	115°	10,2 - 17,3	16
Q042.AC120	Clockwise	Grey	115°	17,3 - 25,5	16

