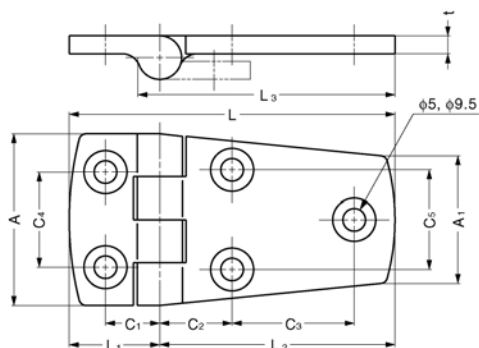
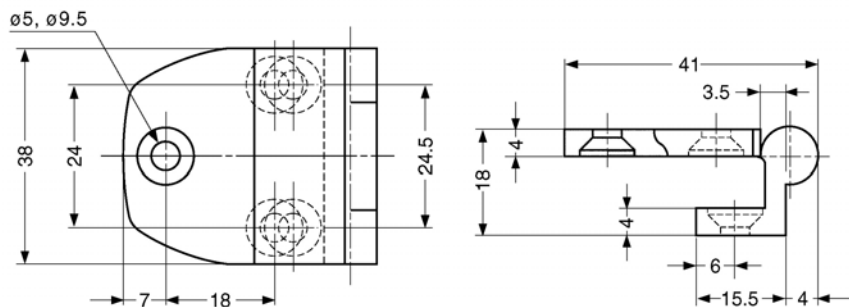


Hinges stainless steel



Order No.	L	L ₁	L ₂	L ₃	C ₁	C ₂	C ₃	C ₄	C ₅	A	A ₁	t	g
S046.AC005	58	20	38	42	12	13,5	16,5	21	20	38	28	4	70
S046.AC007	72	20	52	57	12	16,0	27,0	22	21	38	28	4	85

Hinges stainless steel



Order No.	g
S048.AC004	78,5

Wixroyd

S046



Material
AISI 316 stainless steel, polished finish.

Technical Notes
Max. door size-
450w x 700h x 21 mm thick
Max. door weight-
4,0 Kg per hinge pair.

Wixroyd

S048



Material
AISI 316 stainless steel, polished finish.

Technical Notes
Max. door size-
450w x 700h x 21 mm thick
Max. door weight-
4,0 Kg per hinge pair.

HINGES