

S058



Material

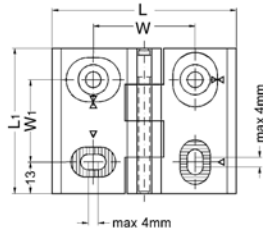
Die-cast zinc plate. Zinc plated steel bolt. Black powder coated.

Technical Notes

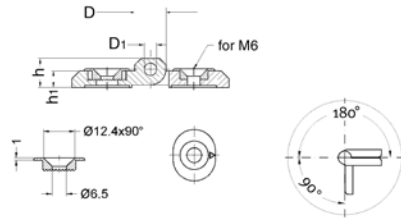
Adjustable hinge allows uneven gaps between door and frame to be compensated for. Bushes ensure no accumulation of dirt in slot, as well as non-slip accurate location. Adjusting bushes included.

Hinges, Adjustable

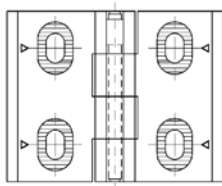
die-cast zinc



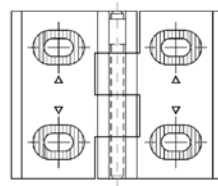
Vertical & horizontal



Adjustable bush



Vertical only



Horizontal only

Order No.	Adjustment	D	D ₁	L	L ₁	W	W ₁	h	h ₁	Max. load Nm	g
S058.AC014	Vert. & Horiz.	16	8	76	60	42	34	15	8	300	190
S058.AC015	Vertical only	16	8	76	60	42	34	15	8	300	190
S058.AC016	Horizontal only	16	8	76	60	42	34	15	8	300	190

S060



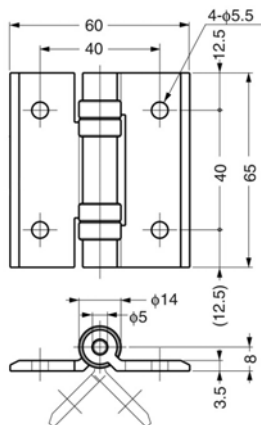
Material

Body: aluminium.
Spacer: polyacetal.
Pin: AISI 304 stainless steel.

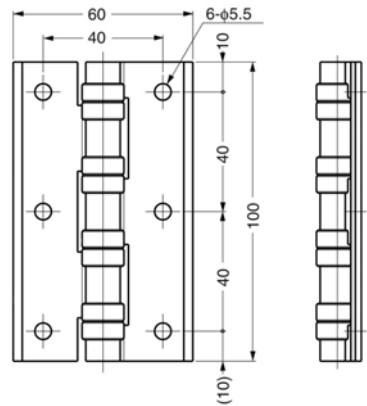
Technical Notes

Due to unique spacers, hinge generates no friction powder and is ideal for semiconductor rooms, clean rooms, medical and food processing applications.

Clean Room Hinges



type one



type two

Order No.	Type
S060.AC065	One
S060.AC100	Two