

Hinges plastic

S062

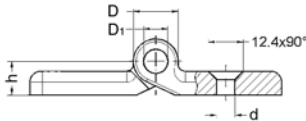
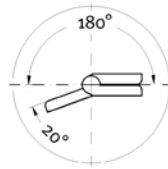
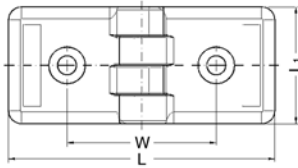


Material

Fibreglass, reinforced plastic - black. Bolt - zinc plated steel.

Technical Notes

Each side has four fits for centering pins, which enable vertical and horizontal centering in slots.



Order No.	Centering pin	W	L	L ₁	D	D ₁	d Ø	h	Max. load	g
S062.AC008	8	50	90	40	16	8	6,4	9	150	48
S062.AC010	10	50	90	40	16	8	6,4	9	150	48
S062.AC099	-	50	90	40	16	8	6,4	9	150	48

Hinges plastic

S064

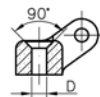
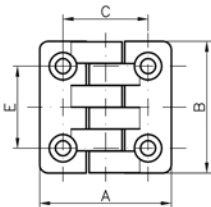


Material

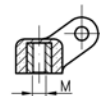
Reinforced nylon plastic - black. Stainless steel pin AISI 303.

Technical Notes

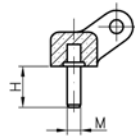
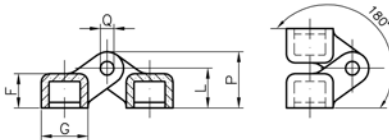
Type A - countersunk through hole. Type B - brass insert with tapped blind hole. Type C - male zinc plated steel stud. Do not exceed the max. screwing force for fixing - see table.



Type A



Type B



Type C

Order No.	Type	A	B	C	E	F	G	L	P	Q	M	H	D	Max. screwing force Nm
S064.AC040	A	40	40,0	25,5	25,5	10,0	14	11,5	16,5	4	-	-	4,2	2
S064.AC048	A	48	48,1	31,0	30,0	12,5	17	14,5	20,5	5	-	-	5,5	5
S064.AC065	A	65	64,9	40,0	40,0	14,0	24	17,0	25,0	6	-	-	6,5	10
S064.AC098	A	98	97,9	63,0	60,0	21,0	32	25,0	37,0	8	-	-	10,5	30
S064.AC148	B	48	48,1	31,0	30,0	12,5	17	14,5	20,5	5	M 5	-	-	5
S064.AC149	B	48	48,1	31,0	30,0	12,5	17	14,5	20,5	5	M 6	-	-	10
S064.AC165	B	65	64,9	40,0	40,0	14,0	24	17,0	25,0	6	M 6	-	-	10
S064.AC198	B	98	97,9	63,0	60,0	21,0	35	25,0	37,0	8	M10	-	-	30
S064.AC248	C	48	48,1	31,0	30,0	12,5	17	14,5	20,5	5	M 5	15	-	5
S064.AC265	C	65	64,9	40,0	40,0	14,0	24	17,0	25,0	6	M 6	20	-	10
S064.AC298	C	98	97,9	63,0	60,0	21,0	35	25,0	37,0	8	M10	20	-	30