

## Ball Knobs



# U100



### Material

Duroplast PF 31 DIN 7708, black.  
 Bush: steel, zinc-plated.  
 U100.AC116 & .AC616 has bush of brass.  
 Finish: polished, jointless.  
 Threaded bush type also available in red, subject to minimum quantity.

### Technical Notes

Temperature range max. 110°C.  
 Assembly of taper bush model is through lightly tapping with a hammer, the knob will hold in position without need for cementing. Counter bore requires an h9 fit.



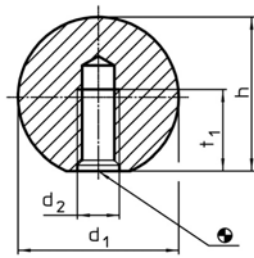
# U120



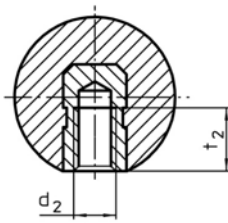
### Material

Black, Duroplast PF3.  
 Brass bush or zinc plated steel male thread.

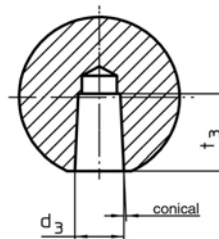
HANDLES & PULLS



moulded thread



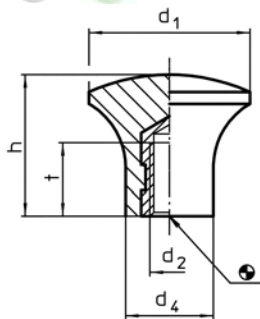
threaded bush



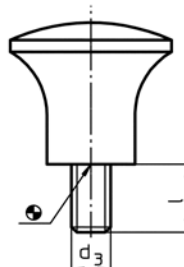
taper bush

Order No.	Finish	d <sub>1</sub>	d <sub>2</sub>	d <sub>3</sub>	h	t <sub>1</sub> IV	t <sub>2</sub> IV	t <sub>3</sub> IV	g
U100.AC016	Moulded thread	16	M 4	-	15,0	7,2	-	-	3
U100.AC020	Moulded thread	20	M 5	-	18,0	9,1	-	-	5
U100.AC025	Moulded thread	25	M 6	-	22,5	11,0	-	-	11
U100.AC032	Moulded thread	32	M 8	-	29,0	14,0	-	-	23
U100.AC040	Moulded thread	40	M10	-	37,0	18,0	-	-	43
U100.AC050	Moulded thread	50	M12	-	46,0	21,0	-	-	86
U100.AC116	Threaded bush	16	M 4	-	15,0	-	6,0	-	4
U100.AC120	Threaded bush	20	M 5	-	18,0	-	7,5	-	9
U100.AC125	Threaded bush	25	M 6	-	22,5	-	9,0	-	13
U100.AC132	Threaded bush	32	M 8	-	29,0	-	12,0	-	29
U100.AC140	Threaded bush	40	M10	-	37,0	-	15,0	-	56
U100.AC150	Threaded bush	50	M12	-	46,0	-	18,0	-	107
U100.AC216	Taper bush	16	-	4	15,0	-	-	9	3
U100.AC220	Taper bush	20	-	5	18,0	-	-	12	6
U100.AC225	Taper bush	25	-	6	22,5	-	-	15	10
U100.AC232	Taper bush	32	-	8	29,0	-	-	15	21
U100.AC240	Taper bush	40	-	10	37,0	-	-	20	40
U100.AC250	Taper bush	50	-	12	46,0	-	-	22	85

## Mushroom Knobs



Female



Male

Order No.	Type	d <sub>1</sub>	d <sub>2</sub>	d <sub>3</sub>	l	d <sub>4</sub>	h	t	g
U120.AC017	Female	17	M 5	-	-	10	14	7	4
U120.AC021	Female	21	M 6	-	-	12	17	11	6
U120.AC025	Female	25	M 6	-	-	14	21	11	9
U120.AC033	Female	33	M 8	-	-	18	29	12	19
U120.AC117	Male	17	-	M 5	9	10	14	-	5
U120.AC121	Male	21	-	M 6	10	12	17	-	9
U120.AC125	Male	25	-	M 6	10	14	21	-	12
U120.AC133	Male	33	-	M 8	14	18	29	-	26