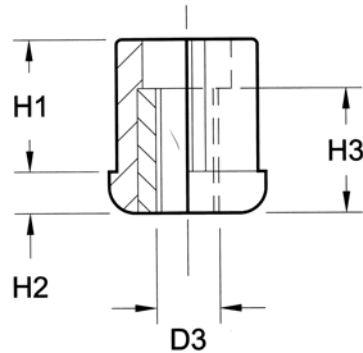
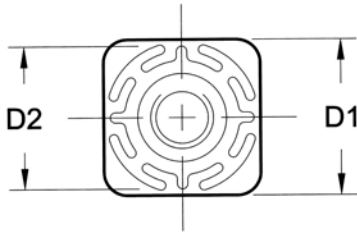


# Threaded Plastic Inserts for Hollow Section

with brass bush



## W004



### Material

Body: polyamide reinforced Nylon.  
Bush: brass, nickel plated.

### Technical Notes

For use with levelling feet and machine feet.

Order No.	Tube size D1	Thread size D3	D2	H1	H2	H3	Max. load capacity for static load max. Kg
W004.AC108	30 x 30 x 1,5	M 8	27	35	8	24	500
W004.AC110	30 x 30 x 1,5	M10	27	35	8	24	500
W004.AC112	30 x 30 x 1,5	M12	27	35	8	24	500
W004.AC116	30 x 30 x 1,5	M16	27	35	8	24	500
W004.AC208	40 x 40 x 1,5	M 8	37	35	8	24	1000
W004.AC210	40 x 40 x 1,5	M10	37	35	8	24	1000
W004.AC212	40 x 40 x 1,5	M12	37	35	8	24	1000
W004.AC216	40 x 40 x 1,5	M16	37	35	8	24	1000
W004.AC220	40 x 40 x 1,5	M20	37	35	8	24	1000
W004.AC308	40 x 40 x 2,0	M 8	36	35	8	24	1000
W004.AC310	40 x 40 x 2,0	M10	36	35	8	24	1000
W004.AC312	40 x 40 x 2,0	M12	36	35	8	24	1000
W004.AC316	40 x 40 x 2,0	M16	36	35	8	24	1000
W004.AC320	40 x 40 x 2,0	M20	36	35	8	24	1000
W004.AC416	50 x 50 x 1,5	M16	47	45	10	24	1200
W004.AC420	50 x 50 x 1,5	M20	47	45	10	24	1200
W004.AC424	50 x 50 x 1,5	M24	47	45	10	24	1200
W004.AC516	50 x 50 x 2,0	M16	46	45	10	24	1200
W004.AC520	50 x 50 x 2,0	M20	46	45	10	24	1200
W004.AC524	50 x 50 x 2,0	M24	46	45	10	24	1200