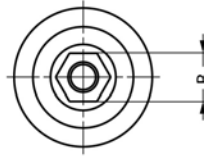
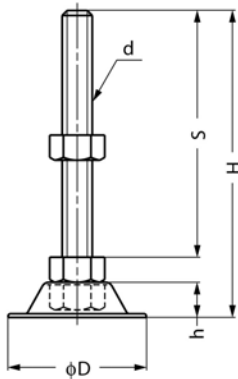


Levelling Feet

pad and bolt stainless steel



W022



Material

Pad and Bolt: AISI 304 stainless steel, polished.

Technical Notes

Complete levelling feet made from stainless steel. Pad made from pressed sheet, making a light weight and value for money levelling foot. Design limited in its angle of articulation.

Order No.	d	D	H	h	S	B	Max. load capacity for static load Kg.	g
W022.AC082	M 8 x 1,25	37	76,0	10,5	60	13	300	65
W022.AC102	M10 x 1,50	37	67,5	10,5	50	17	300	80
W022.AC122	M12 x 1,75	55	122,0	14,0	100	19	300	340
W022.AC123	M12 x 1,75	55	142,0	14,0	120	19	300	365
W022.AC124	M12 x 1,75	55	172,0	14,0	150	19	300	375
W022.AC162	M16 x 2,00	75	128,0	18,0	100	24	560	440
W022.AC163	M16 x 2,00	75	158,0	18,0	130	24	560	480
W022.AC164	M16 x 2,00	75	178,0	18,0	150	24	560	510
W022.AC165	M16 x 2,00	75	208,0	18,0	180	24	560	550
W022.AC202	M20 x 2,50	75	131,0	18,0	100	30	880	590
W022.AC203	M20 x 2,50	75	161,0	18,0	130	30	880	650
W022.AC204	M20 x 2,50	75	181,0	18,0	150	30	880	690
W022.AC205	M20 x 2,50	75	211,0	18,0	180	30	880	750