

W024

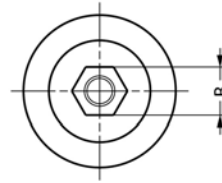
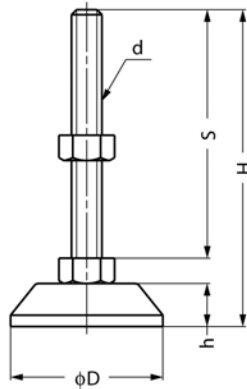


Material
Pad and Bolt: AISI 304 stainless steel, polished.

Technical Notes
Pad is one piece solid stainless steel design, making a more sturdy foot. Design limited in its angle of articulation.

Levelling Feet

pad and bolt stainless steel



Order No.	d	D	H	h	S	B	Max. load capacity for static load Kg.	g
W024.AC122	M12 x 1,75	60	125	17	100	19	300	340
W024.AC123	M12 x 1,75	60	145	17	120	19	300	365
W024.AC124	M12 x 1,75	60	175	17	150	19	300	375
W024.AC162	M16 x 2,00	60	127	17	100	24	560	440
W024.AC163	M16 x 2,00	60	157	17	130	24	560	480
W024.AC164	M16 x 2,00	60	177	17	150	24	560	510
W024.AC202	M20 x 2,50	60	207	17	180	24	880	550
W024.AC203	M20 x 2,50	60	130	17	100	30	880	590
W024.AC204	M20 x 2,50	60	160	17	130	30	880	650
W024.AC205	M20 x 2,50	60	180	17	150	30	880	690
W024.AC206	M20 x 2,50	60	210	17	180	30	880	750

W026

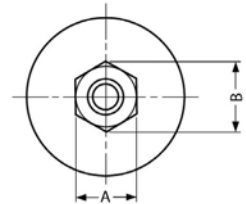
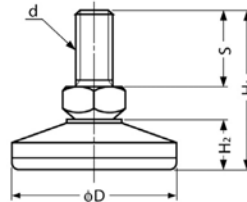
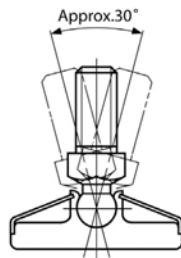


Material
Bolt: steel, zinc chromate.
Pad Cover: AISI 304 stainless steel.
Pad Base: polyamide, white.

Technical Notes
Levelling foot has a 30° angle of articulation.

Levelling Feet

pad polyamide with stainless cover, bolt steel



Order No.	d	A	D	B	H ₁	S	H ₂	Max. load capacity for static load Kg.	g
W026.AC062	M 6 x 1,00	8	25	9,2	31,0	14	9,7	60	11
W026.AC082	M 8 x 1,25	10	30	11,5	37,5	19	11,2	110	21
W026.AC102	M10 x 1,50	13	40	15,0	42,5	20	13,7	160	38
W026.AC122	M12 x 1,75	17	50	19,6	51,0	25	16,0	320	70
W026.AC142	M14 x 2,0	19	70	22,0	66,5	30	24,7	400	150