

W400

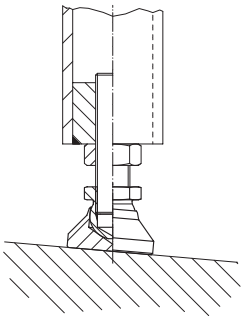


Material

Pad: heat-treated, blackened. Ball: free cutting steel, induction hardened, blackened. Ball with bolt: heat-treated steel, blackened. Lock nut to DIN 934.

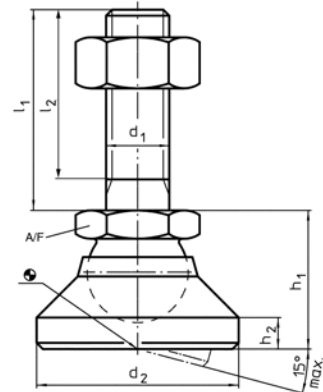
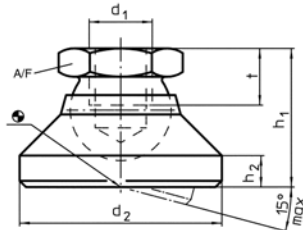
Tips

To be used as feet and thrust pads.



Levelling Feet

pad and bolt steel



Order No.	Type	d ₁	l ₁	d ₂	l	h ₁	h ₂	t	A/F	Max. load capacity for static load kN max.	g
W400.AC006	Pad	M 6	-	20	-	14	2,5	5,0	10	10	17,2
W400.AC008	Pad	M 8	-	25	-	18	4,0	7,0	13	18	36,7
W400.AC010	Pad	M10	-	32	-	22	5,0	9,0	17	20	77,3
W400.AC012	Pad	M12	-	40	-	26	6,0	11,0	19	35	125,3
W400.AC016	Pad	M16	-	50	-	32	7,0	13,5	24	45	249,2
W400.AC020	Pad	M20	-	60	-	42	8,0	17,0	30	55	478,0
W400.AC024	Pad	M24	-	60	-	45	9,5	19,0	36	65	665,0
W400.AC410	Pad and bolt	M 6	60	20	57,0	14	2,5	-	10	10	32,2
W400.AC422	Pad and bolt	M 8	80	25	76,0	18	4,0	-	13	18	64,7
W400.AC438	Pad and bolt	M10	100	32	95,5	22	5,0	-	17	20	130,3
W400.AC442	Pad and bolt	M10	150	32	145,5	22	5,0	-	17	20	155,3
W400.AC452	Pad and bolt	M12	100	40	94,5	26	6,0	-	19	35	210,3
W400.AC456	Pad and bolt	M12	150	40	144,5	26	6,0	-	19	35	255,3
W400.AC468	Pad and bolt	M16	100	50	94,0	32	7,0	-	24	45	404,2
W400.AC472	Pad and bolt	M16	200	50	194,0	32	7,0	-	24	45	539,2
W400.AC482	Pad and bolt	M20	100	60	92,5	42	8,0	-	30	55	738,0
W400.AC488	Pad and bolt	M20	200	60	192,5	42	8,0	-	30	55	948,0
W400.AC495	Pad and bolt	M24	100	60	91,0	45	9,5	-	36	65	845,0
W400.AC498	Pad and bolt	M24	200	60	191,0	45	9,5	-	36	65	1145,0