

Z050



Material

Body: aluminium alloy, polished.
Wheel: polyamides, black.
Mounting plate: steel, yellow zinc chromate finish.

FAX YOUR ORDER

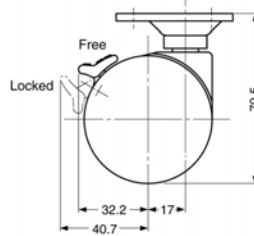
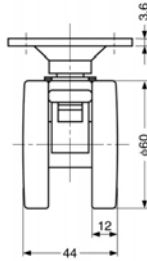
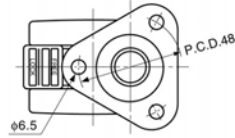
01483 286678

Or call our Sales Helpline

01483 286677



Casters with mounting plate



Order No.	Type	Load Capacity Kg	g
Z050.AC060	With brake	150	230
Z050.AC160	Without brake	150	225

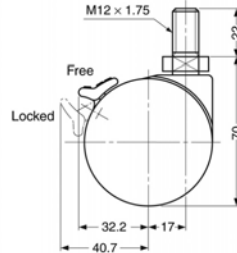
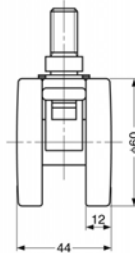
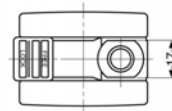
Z055



Material

Body: aluminium alloy, polished.
Wheel: polyamides, black.
Threaded bolt: steel, yellow zinc chromate finish.

Casters threaded bolt mounting



Order No.	Type	Load Capacity Kg	g
Z055.AC060	With brake	150	185
Z055.AC160	Without brake	150	180