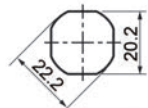


Cam Locks - Cylinder Locks

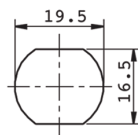


• • • **Cam Locks - Cylinder Locks** • • •

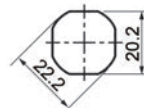
	A2002	A2015	A2202	A2300	Wixroyd Part No.
	Cam Lock - Fixed Grip	Cam Lock - Fixed Grip	Cam Lock - Wing Handle - Fixed Grip	Cam Lock - Snap-on - Fixed Grip	Description
	✓	✗	✓	✗	Flexi-System Actuation Type
	Cylinder lock	Cylinder lock	Cylinder lock	Cylinder lock	Body Material
	Die-cast zinc or Polyamide plastic	Die-cast zinc	Die-cast zinc or Polyamide plastic	Polyamide plastic	Chrome Finish
	✓	✓	✓		Black Coated Finish
	✓		✓		Black Finish
	✓		✓	✓	Body Dia. (mm)
	30 (28 polyamide)	23,5	30 (28 polyamide)	45	Body Length LH (mm)
	20	20/25/30	18,5	21,1	IP Rating
	IP65	✗	IP65	✗	Suitable Cam Type
	With Projection	W/O Projection	With Projection	With Projection	Suitable for 3 Point Latching
	✓	✗	✓	✓	Dust Cap Available
	✓	✗	✗	✗	Cut Out
	22,2 dia / 20,2 sq	19,5 dia / 16,5 sq	22,2 dia / 20,2 sq	26 x 20	



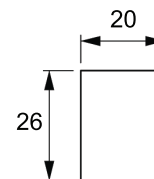
flexi-system cut out



cut out



flexi-system cut out



cut out