

Cam Latches - Insert Driver



• • • **Cam Latches - Insert Driver** • • •

Wixroyd Part No.	A1002	A1020	A1040	A1060	A1102	A1120
Description	Cam Latch - Fixed Grip	Cam Latch - Fixed Grip	Cam Latch - Push-to-Close - Fixed Grip	Cam Latch - Captive Key - Fixed Grip	Cam Latch - Fixed Grip	Cam Latch - Finger Catch - Fixed Grip
Flexi-System	✓	✓	✓	✓	✓	✓
Actuation Type	Insert Driver	Insert Driver	Insert Driver`	Insert Driver	Insert Driver	Insert Driver
Body Material	Die-cast zinc	Polyamide Plastic	Die-cast zinc	Die-cast zinc	Stainless Steel	Polyamide Plastic
Chrome Finish	✓		✓	✓		
Black Coated Finish	✓			✓		
Black Finish		✓				✓
Body Dia. (mm)	30	28	30	30	28	40
Body Length LH (mm)	18,5	18,5	18,5	18,5	18,5	18,5
IP Rating	IP65	IP65	No	IP65	IP65	IP65
Suitable Cam Type	With Projection	With Projection	Supplied with	With Projection	With Projection	With Projection
Suitable for 3 Point Latching	✓	✓	✓	✓	✓	✓
Dust Cap Available	✓	✓	✓	✓	✓	✗
Cut Out	22,2 dia / 20,2 sq	22,2 dia / 20,2 sq	22,2 dia / 20,2 sq	22,2 dia / 20,2 sq	22,2 dia / 20,2 sq	22,2 dia / 20,2 sq
	flexi-system cut out	flexi-system cut out	flexi-system cut out	flexi-system cut out	flexi-system cut out	flexi-system cut out

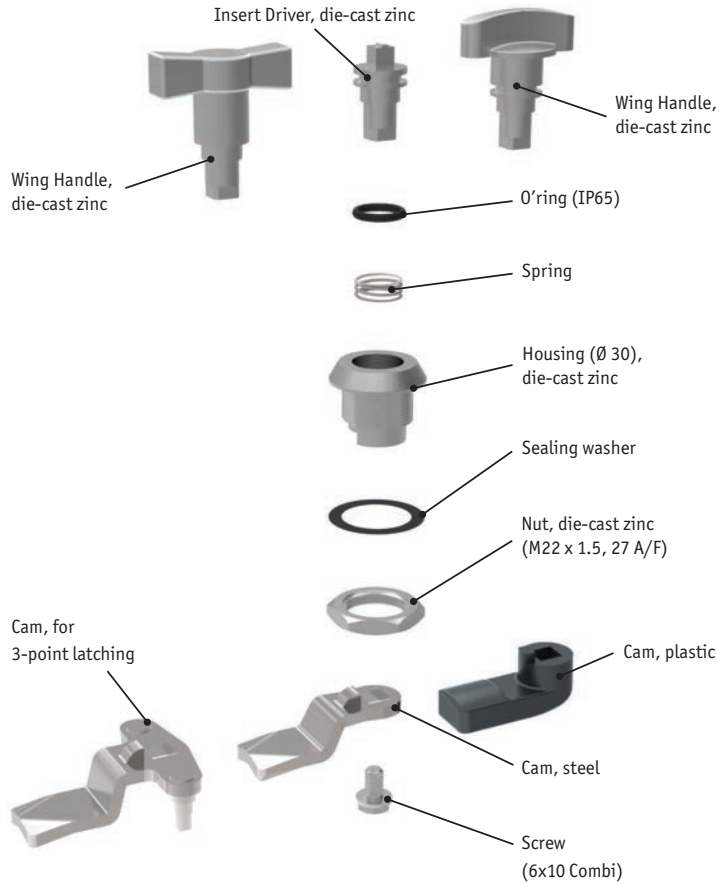


• • • Cam Latches - Insert Driver • • •

A1130	A1150					Wixroyd Part No.
Cam Latch - Finger Catch Fixed Grip	Cam Latch - Finger Catch - Fixed Grip					Description
✓	✗					Flexi-System
Insert Driver	Insert Driver					Actuation Type
Polyamide Plastic	Polyamide Plastic					Body Material
						Chrome Finish
✓	✓					Black Coated Finish
45	45					Black Finish
18,5	17,5					Body Dia. (mm)
IP65	✗					Body Length LH (mm)
With Projection	With Projection					IP Rating
✓	✓					Suitable Cam Type
✗	✗					Suitable for 3 Point Latching
22,2 dia / 20,2 sq	26 x 20 sq					Dust Cap Available
						Cut Out
<p>flexi-system cut out</p>	<p>cut out</p>					

Cam Latch Exploded View and Assembly

Die-cast Zinc: A1002, A1180, A1190 (also A1102 in Stainless Steel)



Plastic: A1020, A1180, A1190

