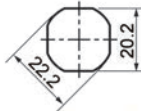


Cam Latches- Padlockable

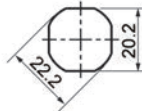


• • • **Cam Latches - Padlockable** • • •

Wixroyd Part No.	A1158	A1160	A1162			
Description	Cam Latch - Padlockable - Fixed Grip	Cam Latch - Padlockable - Fixed Grip	Cam Lock - Combination Lock - Fixed Grip			
Flexi-System	✓	✓	✗			
Actuation Type	Insert Driver	Wing Knob	Combination Lock			
Body Material	Die-cast zinc	Die-cast zinc	Die-cast zinc			
Chrome Finish	✓	✓	✓			
Black Coated Finish	✓	✓				
Black Finish						
Body Dia. (mm)	32	30	31,5			
Body Length LH (mm)	18,5	18,5	18,5			
IP Rating	✗	✗	✗			
Suitable Cam Type	With Projection	With Projection	Supplied With			
Suitable for 3 Point Latching	✓	✓	✗			
Dust Cap Available	✗	✗	✗			
Cut Out	22,2 dia / 20,2 sq	22,2 dia / 20,2 sq	19 dia / 16,5 sq			



flexi-system cut out



flexi-system cut out



cut out