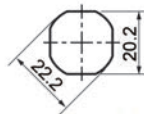


# Cam Latches - Wing Handle

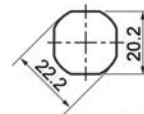


• • • **Cam Latches - Wing Handle** • • •

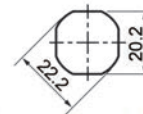
	<b>A1180</b>	<b>A1190</b>	<b>A1202</b>	<b>Wixroyd Part No.</b>
	Cam Latch - Wing Handle - Fixed Grip	Cam Latch - Wing Handle - Fixed Grip	Cam Latch - Finger Handle - Fixed Grip	<b>Description</b>
	✓	✓	✓	<b>Flexi-System</b>
	Wing knob	Wing knob	Wing knob	<b>Actuation Type</b>
	Die-cast zinc or Polyamide plastic	Die-cast zinc or Polyamide plastic	Die-cast zinc	<b>Body Material</b>
	✓	✓		<b>Chrome Finish</b>
	✓	✓		<b>Black Coated Finish</b>
	✓	✓	✓	<b>Black Finish</b>
	30 (28 polyamide)	30 (28 polyamide)		<b>Body Dia. (mm)</b>
	18,5	18,5	18,5	<b>Body Length LH (mm)</b>
	✗	IP65	✗	<b>IP Rating</b>
	With Projection	With Projection	With Projection	<b>Suitable Cam Type</b>
	✓	✓	✓	<b>Suitable for 3 Point Latching</b>
	✗	✗	✗	<b>Dust Cap Available</b>
	22,2 dia / 20,2 sq	22,2 dia / 20,2 sq	22,2 dia / 20,2 sq	<b>Cut Out</b>



flexi-system cut out



flexi-system cut out



flexi-system cut out