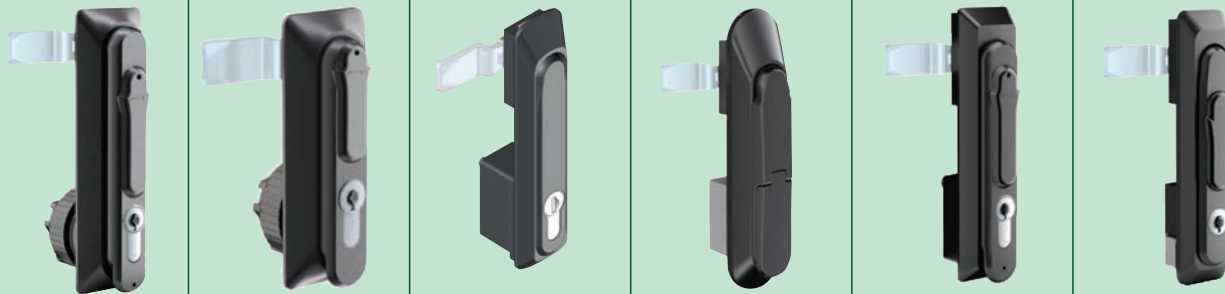


# Swing Handles - Cam Locks



• • • **Swing Handles - Cam Locks** • • •

Wixroyd Part No.	B1000	B1040	B1080	B1090	B1120	B1160
<b>Description</b>	Swing Handle - with cover	Swing Handle - Short - with cover	Swing Handle - near flush	Swing Handle - High Security	Swing Handle - with cover	Swing Handle - with cover
<b>Cylinder Profile</b>	40mm Euro	40mm Euro	40mm Euro	40mm Euro	40mm Euro	Std cylindrical
<b>Lock Cover</b>	✓	✓	✗	✓	✓	✓
<b>Body Material</b>	Polyamide plastic	Polyamide plastic	Die-cast zinc	Die-cast zinc	Polyamide plastic	Polyamide plastic
<b>Handle Material</b>	Polyamide plastic	Polyamide plastic	Die-cast zinc	Die-cast zinc	Polyamide plastic	Polyamide plastic
<b>IP Rating</b>	IP6	IP65	IP65	IP65	IP65	IP65
<b>Integral Gasketing</b>	✗	✗	Polyurethane gasketing	Polyurethane gasketing	Polyurethane gasketing	Polyurethane gasketing
<b>Max Panel Thickness</b>	2	2	2	2	2	2
<b>Locking System</b>	1-point, 2-point, 3-point	1-point, 2-point, 3-point	1-point, 2-point, 3-point	1-point, 2-point, 3-point	1-point, 2-point, 3-point	1-point, 2-point, 3-point
<b>Strength</b>	High security on request	High security on request	High security on request	High security	High security on request	
<b>Padlock Ver</b>	✓		✓	✓	✓	
<b>Cover Dimension mm</b>	164 x 48	130 x 48	168 x 36	198 x 43	167,5 x 38	165 x 36
<b>Height from Door Face mm</b>	24	20	14,4	29	24	21
<b>Use</b>	Inside Gasketing	Inside Gasketing	Inside Gasketing	Inside Gasketing	Inside Gasketing	Inside Gasketing
<b>Feature</b>		Small	All metal	High Security		
<b>Nr. Flush</b>			Nr. Flush			
<b>Sprung Loaded Handle</b>						
<b>Cut Out</b>	45,5 dia	45,5 dia	2 off 50 x 25	2 off 50 x 25	2 off 50 x 25	2 off 50 x 25



• • • **Swing Handles - Cam Locks** • • •

B1200	B1220	B1240	B1242	B1280	B1290	Wixroyd Part No.
Swing Handle - Slam Action - near flush	Swing Handle - Slam Action - near flush	Swing Handle - Slam Action - near flush	Swing Handle - Slam Action - lock cover	Swing Handle	Swing Handle	<b>Description</b>
Std cylindrical	Std cylindrical	Std cylindrical	Std cylindrical	Std cylindrical	Std cylindrical	<b>Cylinder Profile</b>
x	x	x	✓	x	x	<b>Lock Cover</b>
Polyamide plastic	Polyamide plastic	Die-cast zinc	Die-cast zinc	Polyamide plastic	Die-cast zinc	<b>Body Material</b>
Die-cast zinc	Die-cast zinc	Die-cast zinc	Die-cast zinc	Polyamide plastic	Die-cast zinc	<b>Handle Material</b>
IP65	IP65	IP65	IP65	IP65	IP65	<b>IP Rating</b>
Polyurethane gasketing	Polyurethane gasketing	Polyurethane gasketing	Polyurethane gasketing	Polyurethane gasketing	Polyurethane gasketing	<b>Integral Gasketing</b>
2	2	2	2	2	2	<b>Max Panel Thickness</b>
1-point, 2-point, 3-point High security on request	1-point, 2-point, 3-point High security on request	1-point, 2-point, 3-point High security on request	1-point, 2-point, 3-point High security on request	1-point, 2-point, 3-point	1-point, 2-point, 3-point	<b>Locking System</b>
160 x 35	160 x 35	160 x 35	160 x 35	160 x 35	160 x 35	<b>Strength</b>
8	9	9	15,5	12	12	<b>Padlock Ver</b>
Inside Gasketing	Inside Gasketing	Inside Gasketing	Inside Gasketing	Inside Gasketing	Inside Gasketing	<b>Cover Dimension mm</b>
		All metal	All metal			<b>Height from Door Face mm</b>
						<b>Use</b>
Nr. Flush	Nr. Flush	Nr. Flush				<b>Feature</b>
Sprung Loaded	Sprung Loaded	Sprung Loaded	Sprung Loaded			<b>Nr. Flush</b>
25 x 150	2 off 50 x 25	2 off 50 x 25	2 off 50 x 25	2 off 50 x 25	2 off 50 x 25	<b>Sprung Loaded Handle</b>
						<b>Cut Out</b>

# Swing Handles - Cam Locks



• • • **Swing Handles - Cam Locks** • • •

Wixroyd Part No.	B1320	B1330	B1360	B1400	B1450	B1470
<b>Description</b>	Swing Handle - Non-Lock	Swing Handle - Non-Lock	Swing Handle - Short - Non-Lock	Swing Handle - Short	Swing Handle - Sliding Cover	Swing Handle - Push Button
<b>Cylinder Profile</b>	No Lock	No Lock	No Lock	Std cylindrical	Std cylindrical	No Lock
<b>Lock Cover</b>	✗	✗	✗	✗	✓	✗
<b>Body Material</b>	Polyamide plastic	Die-cast zinc	Polyamide plastic	Polyamide plastic	Polyamide plastic	Die-cast zinc
<b>Handle Material</b>	Polyamide plastic	Die-cast zinc	Polyamide plastic	Die-cast zinc	Die-cast zinc	Die-cast zinc
<b>IP Rating</b>				IP65	IP65	IP65
<b>Integral Gasketing</b>	Polyurethane gasketing	Polyurethane gasketing	Polyurethane gasketing	Polyurethane gasketing	Polyurethane gasketing	Polyurethane gasketing
<b>Max Panel Thickness</b>	2	2	2	2	2	2
<b>Locking System</b>	1-point, 2-point, 3-point	1-point, 2-point, 3-point	1-point, 2-point, 3-point	1-point, 2-point, 3-point High security on request	1-point, 2-point, 3-point	1-point, 2-point, 3-point
<b>Strength</b>						
<b>Padlock Ver</b>						
<b>Cover Dimension mm</b>	160 x 35	160 x 35	110 x 35	110 x 35	240 x 35	148 x 37
<b>Height from Door Face mm</b>	12	12	12	12	25	7,2
<b>Use</b>	Inside Gasketing	Inside Gasketing	Inside Gasketing	Inside Gasketing	Inside Gasketing	Inside Gasketing
<b>Feature</b>			Small	Small	Sliding cover	
<b>Nr. Flush</b>						Nr. Flush
<b>Sprung Loaded Handle</b>						
<b>Cut Out</b>	2 off 50 x 25	2 off 50 x 25	25 x 100	25 x 100	25 x 190	27 x 135



# Product Cut Out Dimensions



• • • **Swing Handles - Cam Locks** • • •

B1000	B1040	B1080   B1090 B1120   B1160 B1220   B1240 B1242   B1280 B1290   B1320 B1330	B1200	B1360   B1400	Wixroyd Part No.
45,5 diameter, 106 spacing	45,5 diameter, 72,5 spacing	2 off 50 x 25 100 spacing	25 x 150	25 x 100	Cut Out

**B1472**

Swing Handle - Push Button  
Std cylindrical

Die-cast zinc  
Die-cast zinc

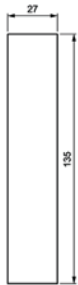
Polyurethane gasketing  
2

1-point, 2-point, 3-point

148 x 37  
7,2

Inside Gasketing

27 x 135



• • • **Swing Handles - Cam Locks** • • •

B1450	B1470   B1472				Wixroyd Part No.
25 x 190	27 x 135				Cut Out