

10650

ADJUSTABLE VERTICAL CLAMPS

Material

Aluminium body, steel arm and screw.
Aluminium clamping pad.

Technical Notes

Can be used with our stackable riser elements to increase the clamping height

if required (see part 10651).

Supplied with clamping key (10651. W1140). Clamping screws for mounting to machine bed etc. supplied separately, see part no. 10654.

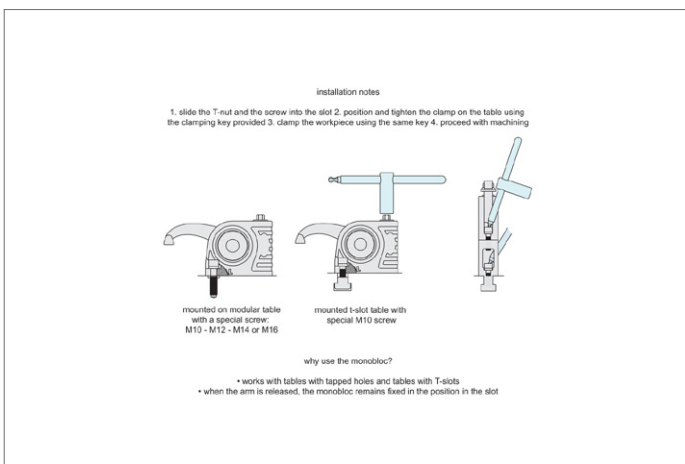
Tips

Can be used on T-slot tables or tapped holes.

Important Notes

Available as a box set, see part 10653.

Order No.	Arm type	Clamp reach l_1	Clamping force kN max.	Clamping height h_1	h_2	h_3	l_2	l_3	r_1	w_1	w_2	A/F	Torque to Nm max.
10650.W0020	Short	33	16	0 to 80	89	49	108	12.5	r 77	40	16	11	80
10650.W0030	Long	61	12	-8 to 102	89	49	108	12.5	r105	40	16	11	80
10650.W0035	Extra Long	132	8	-43 to 155	89	49	108	12.5	r176	40	16	11	80





A Wide Range of Clamps to Match any Requirement

CLAMPING FORCE
**UPTO
50000
NEWTONS**

10650 All machining operations



**16000
NEWTONS**

10655 Light machining



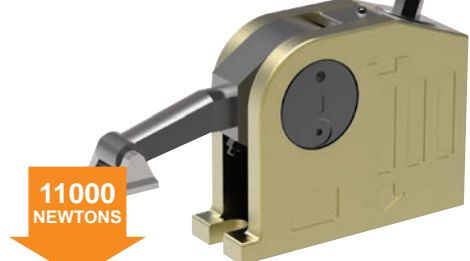
**6500
NEWTONS**

10658 Electrical discharge machining



**6500
NEWTONS**

10660 Clamping and lifting



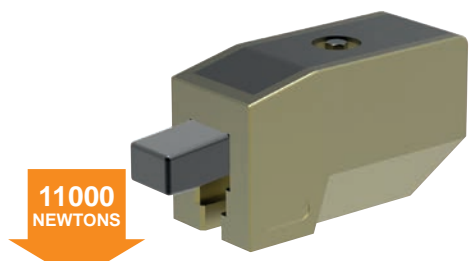
**11000
NEWTONS**

10661 Heavy machining



**40000
NEWTONS**

10670 Repetitive machining



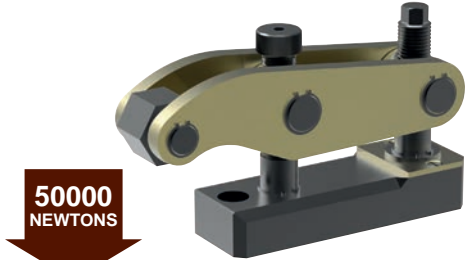
**11000
NEWTONS**

10675 Heavy machining



**35000
NEWTONS**

10678 Press Tool Clamping



**50000
NEWTONS**

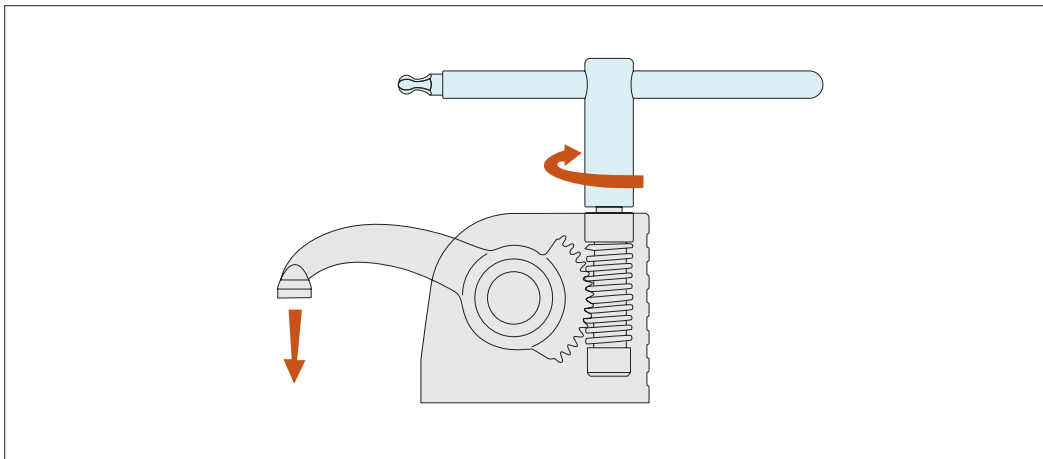


Monobloc Clamps

stackable vertical clamping

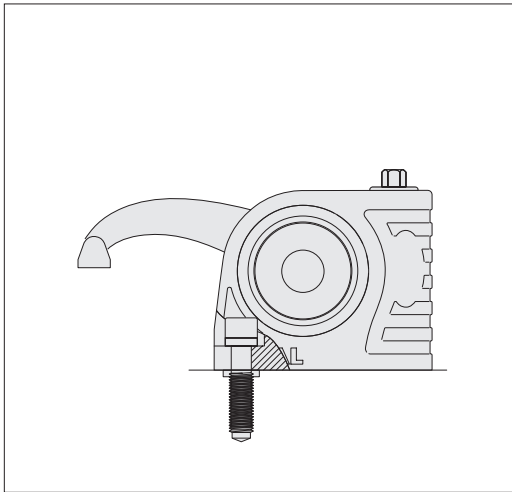


Clamping & Height Setting

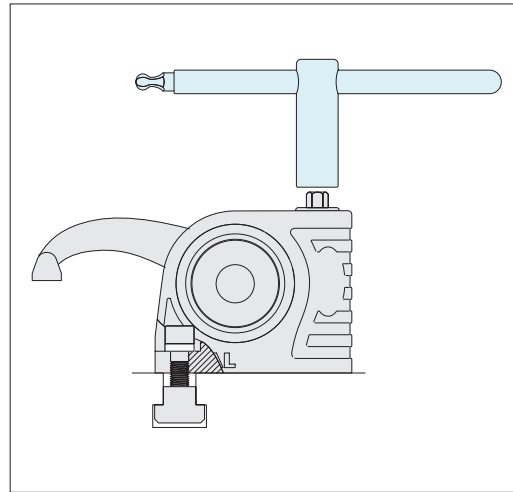


Slide the T-nut into the T-slot position and tighten the clamp onto the T-slot base, with the aid of the clamp key (shown in the image in blue).

Clamp the workpiece by twisting the key. Start machining.

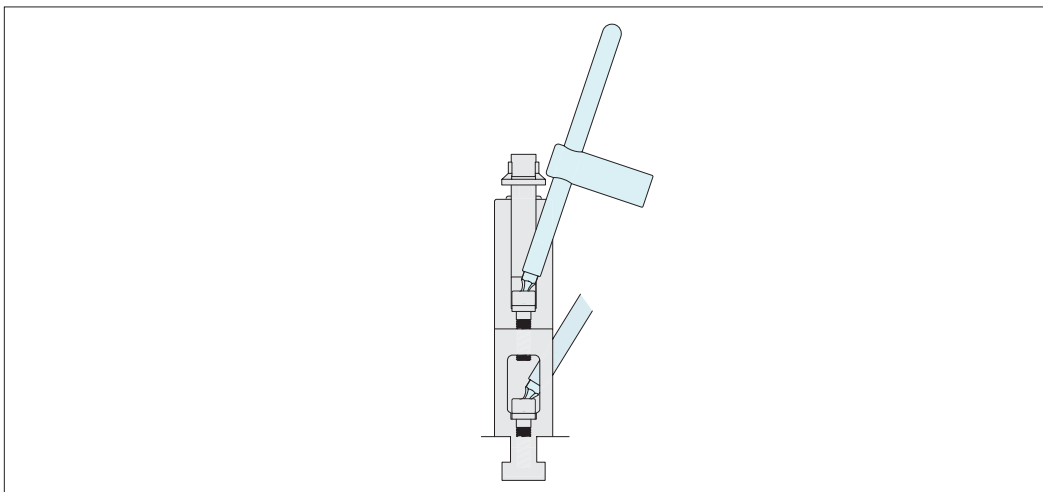


Fix to threaded bases with a special screw M10, M12, M14, M16.



Fix to T-slots with suitable T-nuts.

When unclamped the arm and the clamp remain in position



The clamps are easily stackable to achieve required clamping height.

ADJUSTABLE VERTICAL CLAMPS

ov-W10650-A-T-stackable-clamps-rmh - Updated - 20-10-2022