

10660

ADJUSTABLE VERTICAL CLAMPS

Material

Aluminium body, steel arm and screw.
Aluminium clamp thrust product.

Technical Notes

Fully adjustable clamping range that can be used with our standard stackable riser

elements (see part no. 10651).

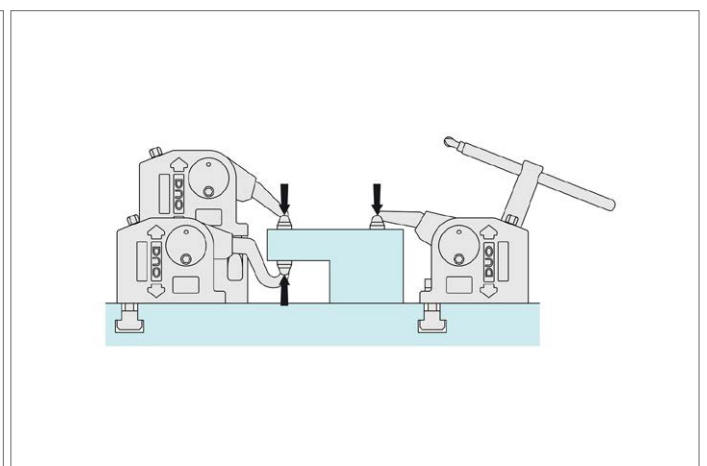
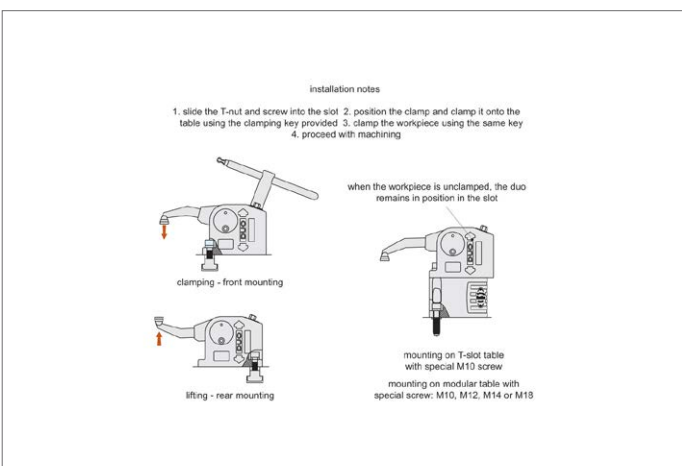
Has both clamping and lifting capability, aided by two different interchangeable arms.

Supplied with operating key.

Tips

Two different clamping arm shapes provided: straight and cranked. See table below for clamping and lifting heights of each arm.

Order No.	Clamp reach l_1 - l_2	Clamp reach l_3 - l_4	Clamping force kN max.	Clamping height h_1 min. max.	Lifting height h_2 min. max.	h_1 min. max.	h_2 min. max.	h_3	h_3 min. max.	h_4	h_4 min. max.	l_5	l_6	w_1	w_2	Clamping arm
10660.W0020	46-88	48-91	11	0-129	4-142	0-80	52-142	95	38-125	65	4-94	120	10	40	14	Straight





A Wide Range of Clamps to Match any Requirement

CLAMPING FORCE
**UPTO
50000
NEWTONS**

10650 All machining operations



**16000
NEWTONS**

10655 Light machining



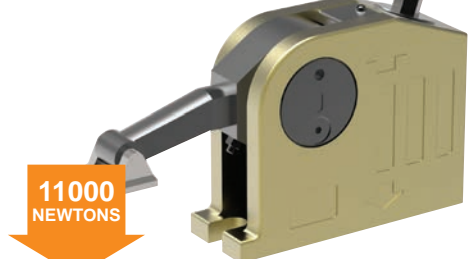
**6500
NEWTONS**

10658 Electrical discharge machining



**6500
NEWTONS**

10660 Clamping and lifting



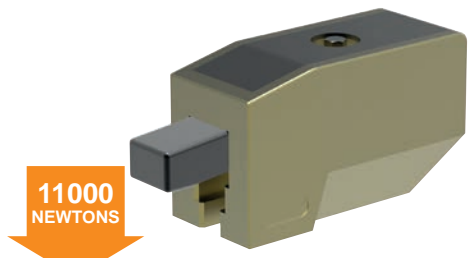
**11000
NEWTONS**

10661 Heavy machining



**40000
NEWTONS**

10670 Repetitive machining



**11000
NEWTONS**

10675 Heavy machining



**35000
NEWTONS**

10678 Press Tool Clamping



**50000
NEWTONS**

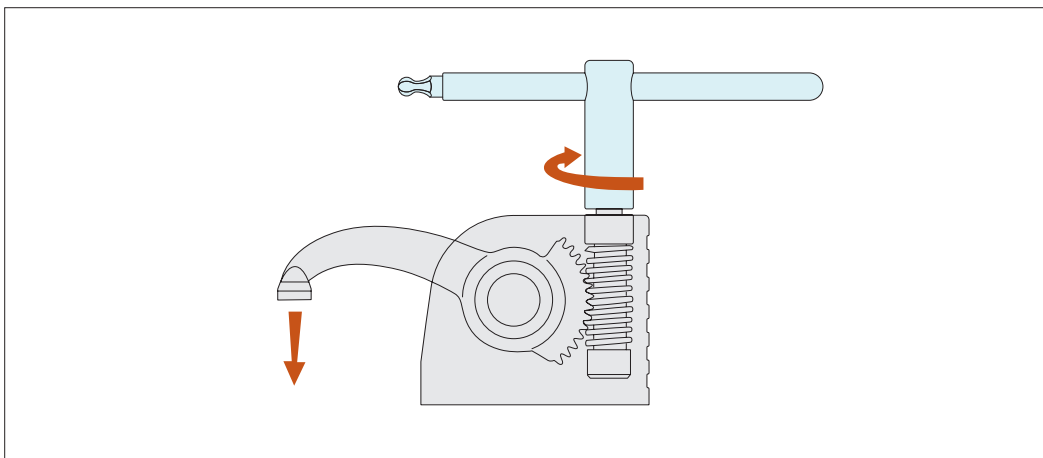


Monobloc Clamps

stackable vertical clamping

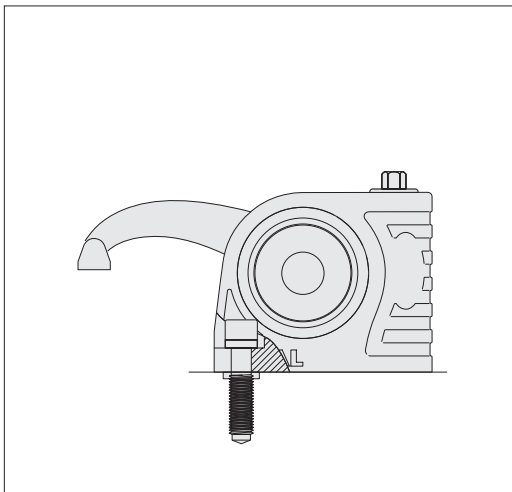


Clamping & Height Setting

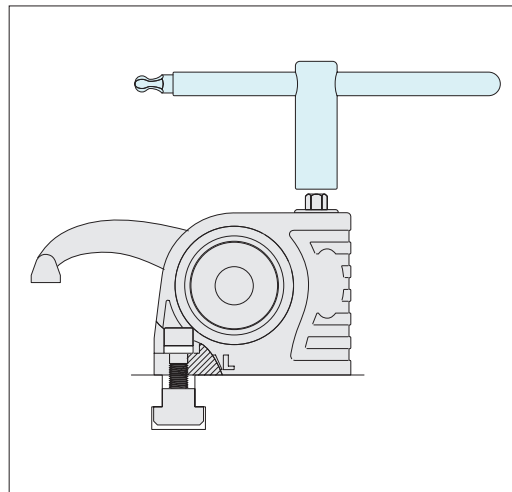


Slide the T-nut into the T-slot position and tighten the clamp onto the T-slot base, with the aid of the clamp key (shown in the image in blue).

Clamp the workpiece by twisting the key. Start machining.

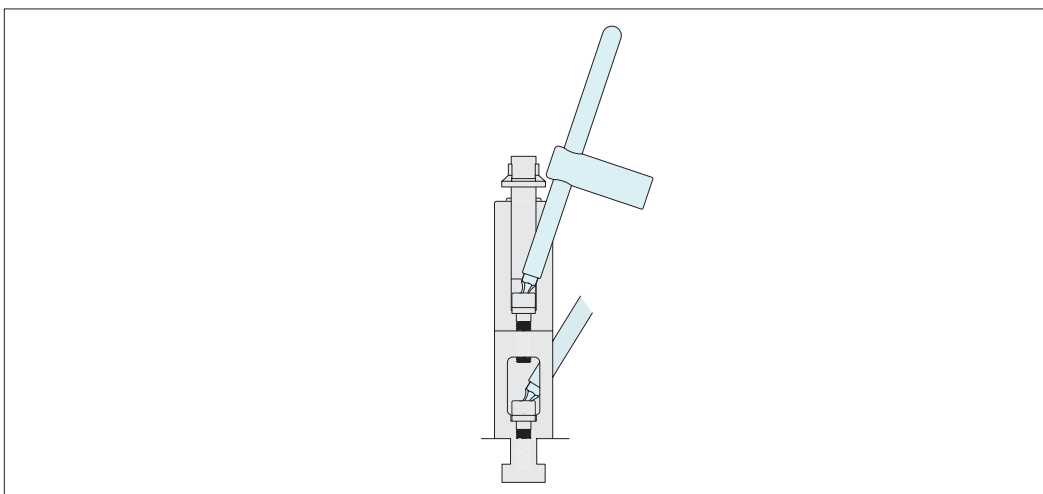


Fix to threaded bases with a special screw M10, M12, M14, M16.



Fix to T-slots with suitable T-nuts.

When unclamped the arm and the clamp remain in position



The clamps are easily stackable to achieve required clamping height.

ADJUSTABLE VERTICAL CLAMPS