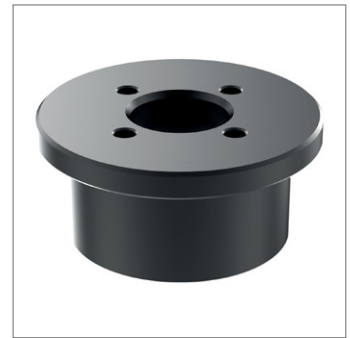
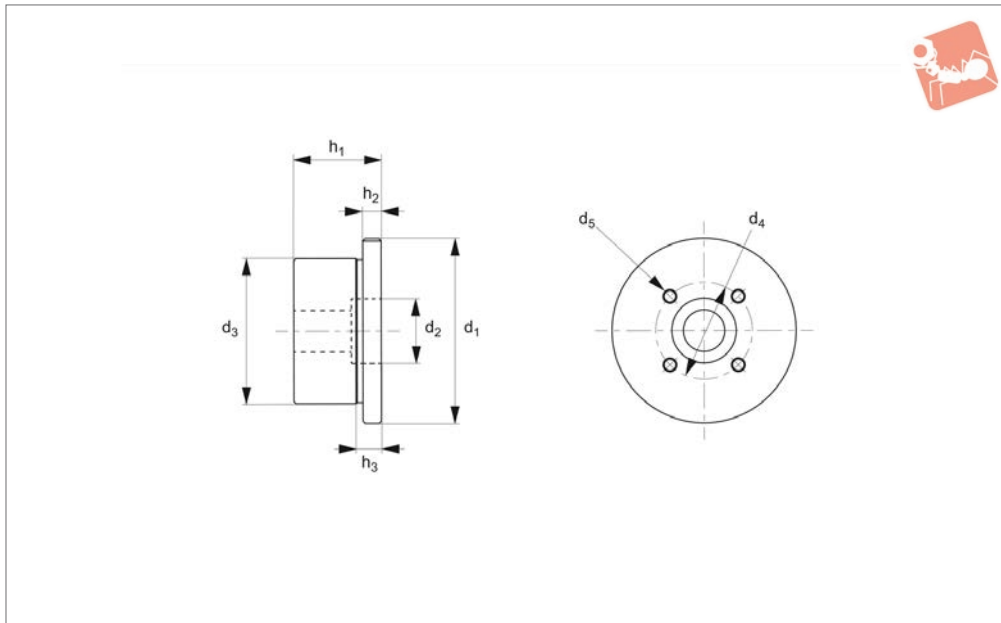
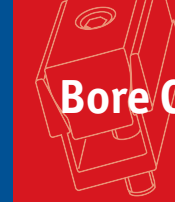




Lathe Mounting Adaptor

for flexible form holding clamp 12055

Bore Clamping



12055.2

BORE CLAMPING

Material

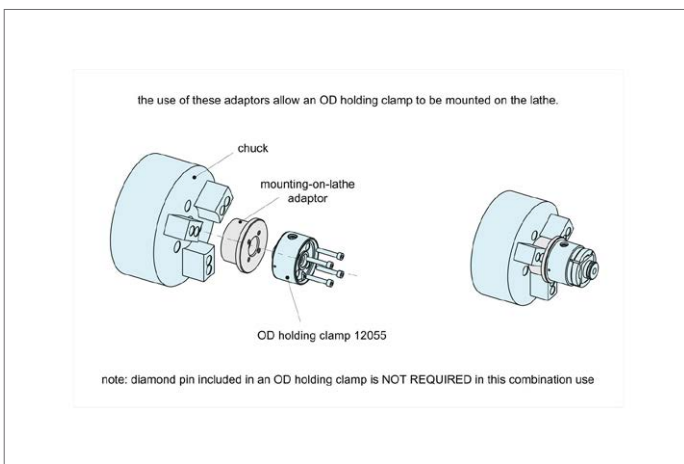
Steel, hardened and blackened.

form holding clamp (part no. 12055) to a lathe.

Technical Notes

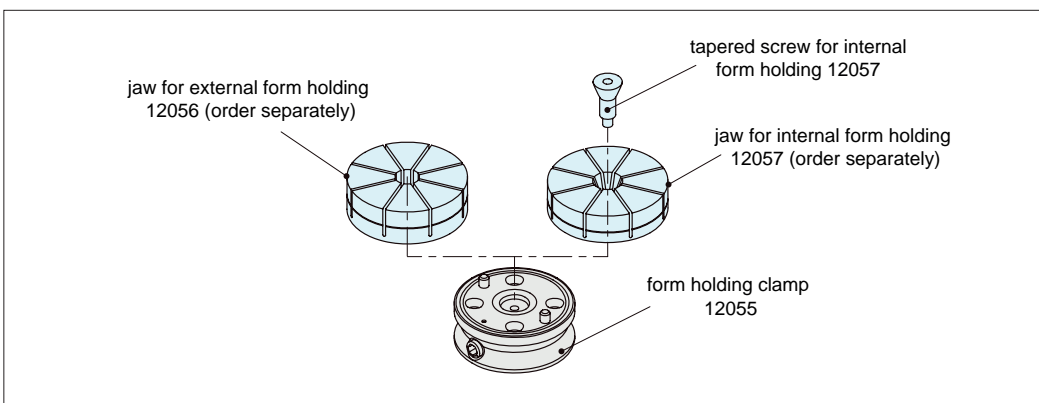
Adaptor to enable mounting of flexible

Order No.	h_1	h_2	h_3	Suitable for clamping base 12055	Size	d_1	d_2	d_3	d_4	d_5	Weight g
12055.W1065	38	8	13	4.5	65	80	28	63	42	M 6x1,00	910
12055.W1090	43	8	15	7.0	90	100	42	80	60	M 8x1,25	1600



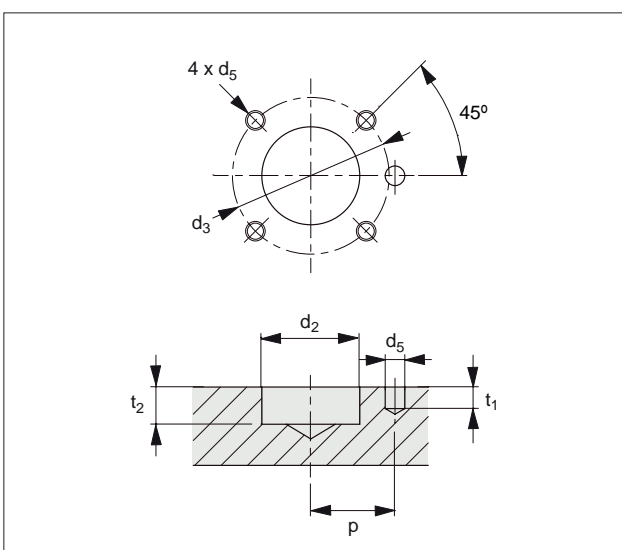


Feature



Two optional jaws allow clamping a workpiece both on its external form and internal form.

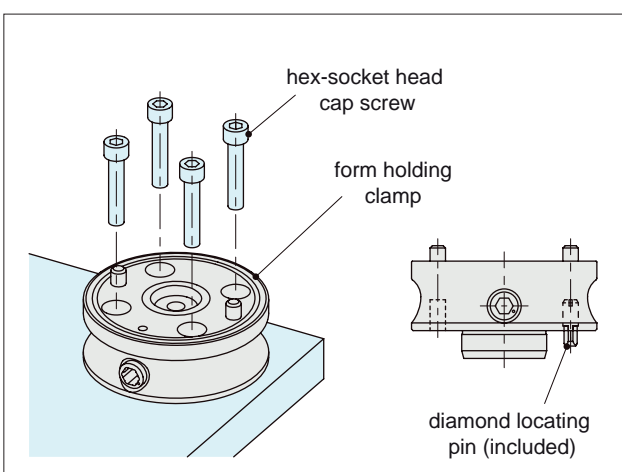
How to Use



Part Number	d ₂ (H7)	t ₁	d ₅ (G7)	t ₂
12055.W0065	28	13	6	6
12055.W0090	42	15	8	8
12055.W0120	55	19	10	11
12055.W0160	63	25	12	13

Part Number	P (±0,02)	d ₅	d ₃
12055.W0065	22	M 6X1	42
12055.W0090	30	M 8X1,25	60
12055.W0120	43	M10X1,5	80
12055.W0160	60	M12X1,75	110

Installation Instruction



Insert an included diamond locating pin into the body for locating and secure the body to the fixture plate with 4 socket-head cap screws.

Note: use either of the holes for the diamond locating pin for your application.

Dimension of Diamond Locating Pin

Part Number	diameter
12055.W0065	Ø 6h6
12055.W0090	Ø 8h6
12055.W0120	Ø 10h6
12055.W0160	Ø 12h6

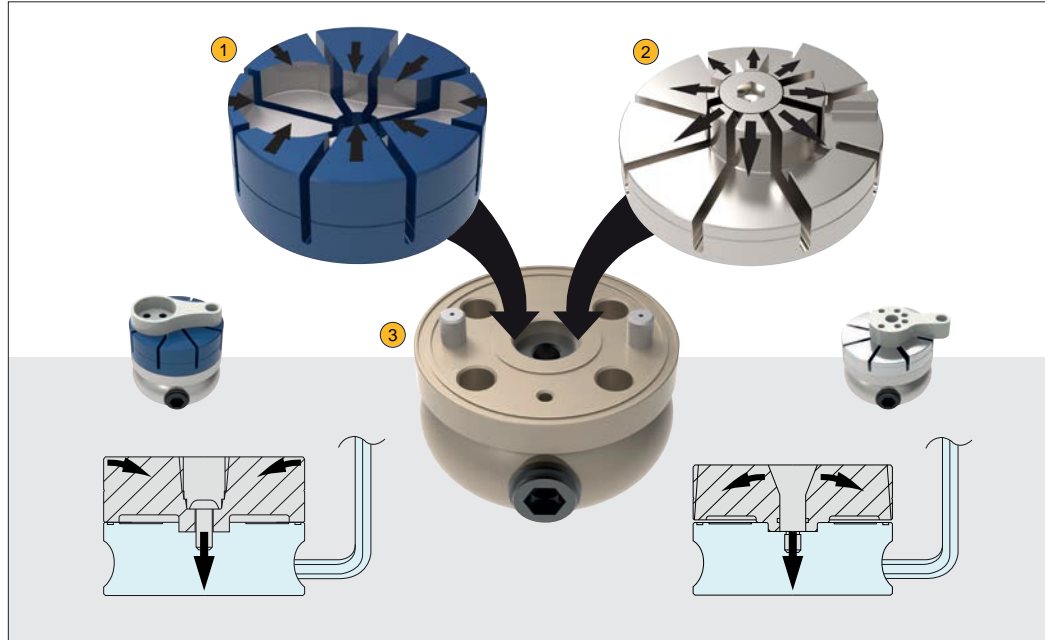


Flexible Form Holding Clamp

12055- 12057
Clamping & Height Setting

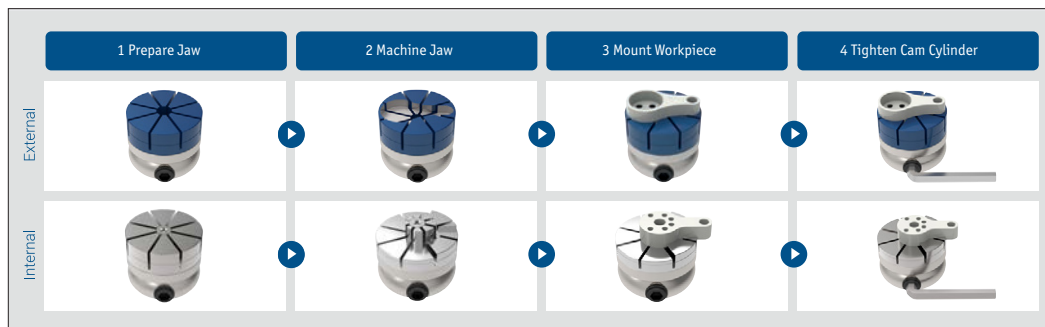
Versatile holding of complex shaped workpieces on either the external or internal form - quick, secure, versatile.

Single clamping base designed to accept either external form or internal form clamping jaws, fully flexible holding of custom forces.



- ① External Form Jaw - 12056
- ② Internal Form Jaw - 12057
- ③ Flexible Form Clamping Base - 12055

BORE CLAMPING

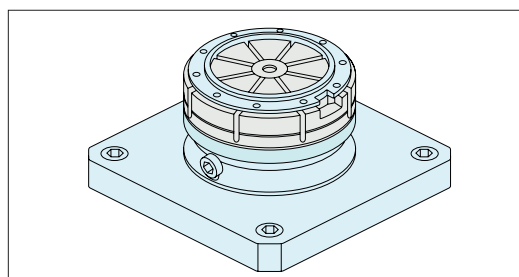


External

Parts 12055, 12056

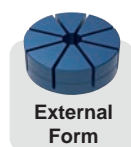
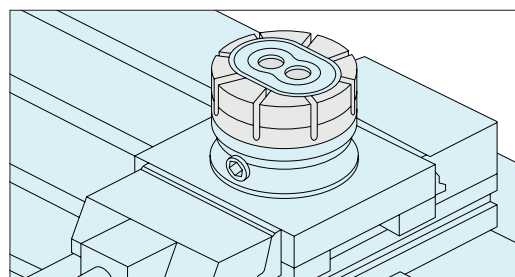
Internal

Parts 12055, 12057



Clamping Low Profile Workpiece
Parts 12055 and 10257. 8 jaw clamping sections distribute clamping force to workpiece for deformation prevention.

Note to control the tightening torque using adequate tools in reference to the data provided by the performance curve.



Fixture for Temporal Job
Parts 12055 and 10256. Can be mounted on the existing vise by attaching the clamp on plate.

ov-W12055.1-A-T-W12057-A-T-Flexible-form-moulding-clamp-rnh - Updated -24-10-2022