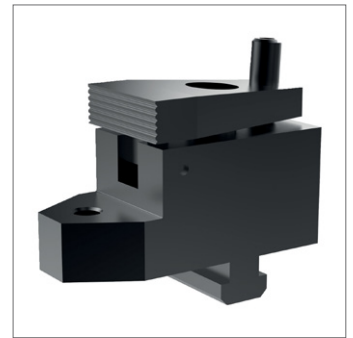
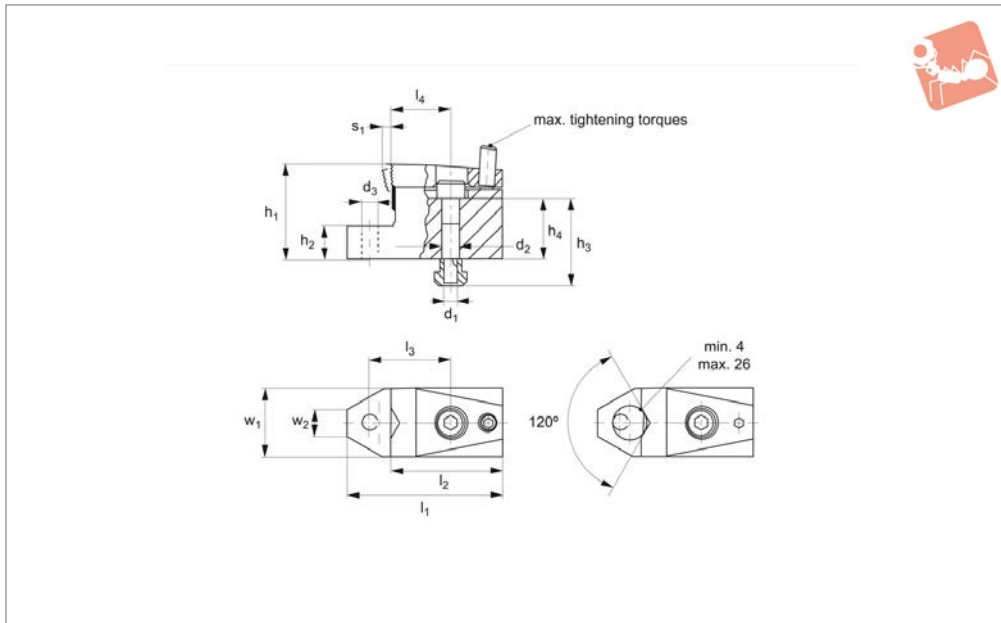


Downhold Clamps with support ledge

Low Profile Side Clamping



12422

LOW PROFILE SIDE CLAMPING

Material

Steel, case-hardened, blackened, ground.

Technical Notes

By tightening the ball-ended thrust screw the workpiece is simultaneously pressed towards the stops and fixture plate. This

pivoting action enables high horizontal clamping forces. The integrated support has a thread suitable for rest buttons.

Tips

Do not over torque clamping screw as this can result in the stripping of the

thread. For recommended torques - please see table.

May be used with holding plate no. 12410.

Order No.	For T-slot	Jaw type	h_1	h_2 ± 0.01	h_3 \approx	h_4 \approx	l_1	l_2	Weight g
12422.W0051	10	Straight Jaw	44	15	40	28	52	28	556
12422.W0061	14	Straight Jaw	53	15	45	27	72	40	1342
12422.W0071	18	Straight Jaw	72	20	60	38	86	41	3149
12422.W0052	10	V- Jaw	44	15	40	28	52	28	553
12422.W0062	14	V- Jaw	53	15	45	27	72	40	1324
12422.W0072	18	V- Jaw	72	20	60	38	86	41	3100

Order No.	l_3	l_4	d_1	d_2	d_3	Stroke s_1	w_1	w_2	Clamping force horizontal kN max.	Tightening torque Nm max.
12422.W0051	72.5	38	M 8	8.4	M 8	3	32	12.1	7.0	3
12422.W0061	100.0	55	M12	13.0	M12	4	48	16.0	15.0	9
12422.W0071	126.0	63	M16	17.0	M16	7	68	18.8	21.5	20
12422.W0052	72.5	38	M 8	8.4	M 8	3	32	12.1	7.0	3
12422.W0062	100.0	55	M12	13.0	M12	4	48	16.0	15.0	9
12422.W0072	126.0	63	M16	17.0	M16	7	68	18.8	21.5	20

Low Profile Side Clamping



Downhold Clamps with support ledge



LOW PROFILE SIDE CLAMPING

