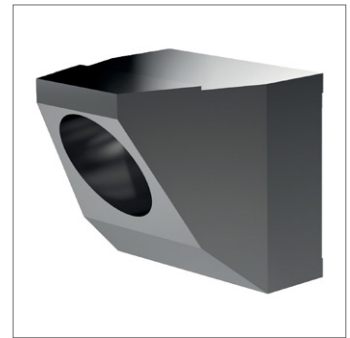
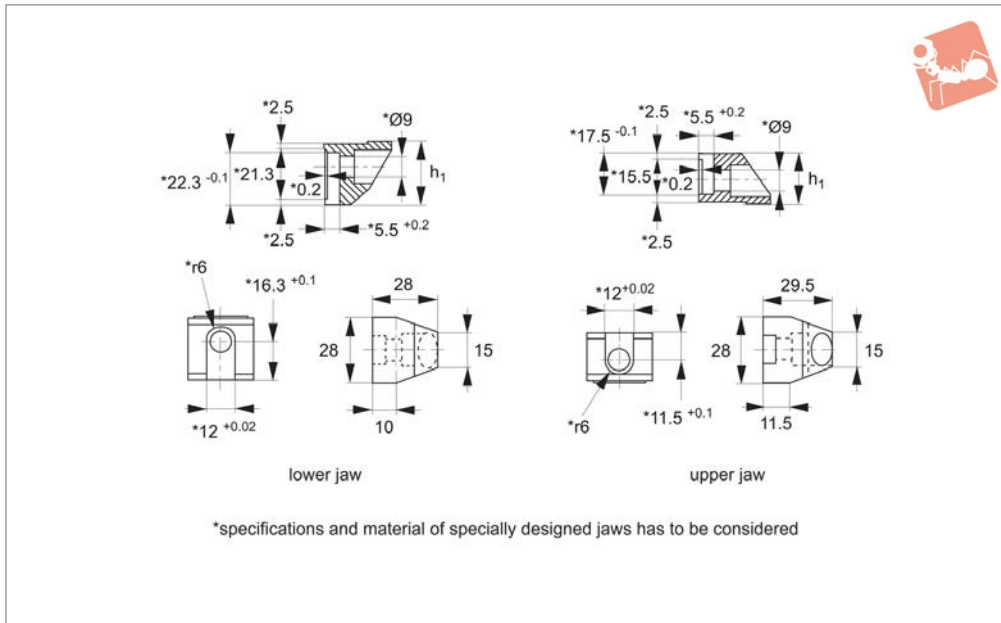




# Support Jaws for floating clamps M12

# Adjustable Vertical Clamps



## 12660.3

ADJUSTABLE VERTICAL CLAMPS

### Material

Steel, case-hardened, nitrided.

### Technical Notes

The clamping jaws can be used for floating clamps 12660.W0008, 12662.W0010,

12660.W0012 and 12662.W0014

### Tips

When using custom-made jaws it is important to insert the tightening screw (M 8 grade 12,9, 43Nm) 10mm deep into the

clamp housing on the upper clamping jaw and 9mm deep into the clamp housing on the lower clamping jaw.

Order No.	Type	Clamping range	$h_1$	Weight
12660.W0050	Lower Jaw	-	-0.1	g
12660.W0052	Upper Jaw	0 - 12	26.8	83
			21	69