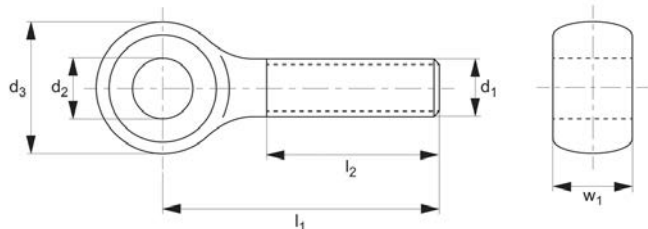


Stainless Swing Bolts

standard tolerance

Swing Bolts



18832

SWING BOLTS

Material

Stainless steel 1.4301.

Technical Notes

DIN 444.

Important Notes

These parts have a bore d_2 to standard tolerance H9 (faces, w_1 are not machined).

For similar parts to DIN 444 with high tolerance see our part 18830.

Order No.	d_1	l_1	d_2 tol. h9	d_3	l_2	w_1	Weight g
18832.W0402	M 5	25	5	12	16	6	5.6
18832.W0403	M 5	30	5	12	16	6	6.4
18832.W0404	M 5	35	5	12	16	6	7.1
18832.W0405	M 5	40	5	12	16	6	7.9
18832.W0412	M 6	30	6	14	18	7	9.5
18832.W0414	M 6	40	6	14	18	7	12.0
18832.W0416	M 6	50	6	14	18	7	14.0
18832.W0418	M 6	60	6	14	18	7	16.0
18832.W0422	M 6	80	6	14	18	7	20.0
18832.W0432	M 8	40	8	18	22	9	22.0
18832.W0434	M 8	50	8	18	22	9	25.0
18832.W0436	M 8	60	8	18	22	9	29.0
18832.W0440	M 8	80	8	18	22	9	37.0
18832.W0444	M 8	100	8	18	22	9	44.0
18832.W0452	M10	50	10	20	26	12	37.0
18832.W0454	M10	60	10	20	26	12	43.0
18832.W0457	M10	75	10	20	26	12	52.0
18832.W0462	M10	100	10	20	26	12	67.0
18832.W0466	M10	120	10	20	26	12	72.0
18832.W0472	M12	50	12	25	30	14	59.0
18832.W0474	M12	60	12	25	30	14	68.0
18832.W0478	M12	80	12	25	30	14	85.0
18832.W0482	M12	100	12	25	30	14	102.0
18832.W0486	M12	120	12	25	30	14	119.0
18832.W0502	M16	120	16	32	38	17	220.0
18832.W0508	M16	150	16	32	44	17	265.0
18832.W0512	M20	100	18	40	46	22	329.0
18832.W0516	M20	120	18	40	46	22	371.0
18832.W0524	M20	160	18	40	52	22	466.0
18832.W0532	M20	200	18	40	52	22	562.0
18832.W0542	M24	100	22	45	54	25	442.0
18832.W0546	M24	120	22	45	54	25	512.0
18832.W0554	M24	160	22	45	60	25	649.0
18832.W0562	M24	200	22	45	60	25	787.0



Swing Bolts - Overview

18820



Swing Bolts - High Tolerance

- Form B - DIN 444.
- Heat-treated steel, quality 8.8, blackened.
- Rolled thread, shaft \varnothing = thread \varnothing , faces machined.
- These parts offer a high precision bore d_2 to tolerance H7, with faces 'w₁' machined flat.

18822



Swing Bolts - Standard Tolerance

- Form B, DIN 444.
- Heat-treated steel, tempered, quality 8.8, black
- These parts have a bore d_2 with a standard tolerance H9 (faces 'w₁' are not machined).

18830



Stainless Swing Bolts - High Tolerance

- DIN 444.
- Stainless steel 1.4305 (AISI 304). Turned, thread rolled. Matt shot blasted.
- These parts offer a high precision bore d_2 to tolerance H7, with faces 'w₁' machined flat.

18832



Stainless Swing Bolts - Standard Tolerance

- DIN 444.
- Stainless steel 1.4301.
- These parts have a bore d_2 with a standard tolerance H9 (faces 'w₁' are not machined).