

25500

WASHERS

Material

Stainless steel (AISI 303, 1.4305).

Use with spherical seat washer no. 25200 (type C).

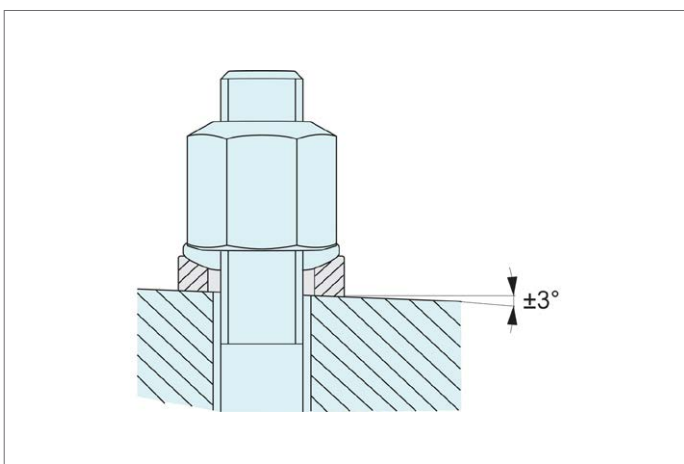
and also the coefficient of friction at $\mu 0,12$.

Technical Notes

Similar to DIN 6319D.

Torque values are approximate. Please consider the actual preloads in your appli-

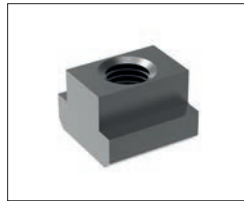
Order No.	For metric thread d_1	For thread d_1 inch	d_2 tol. H13	d_3	h_1	d_4	Load capacity for static load		With 25200 h_2	Weight g
							kN max.	Torque Nm max.		
25500.W0406	M 6	1/4"	7,1	12	2,8	11,0	6	6	4,0	1
25500.W0408	M 8	5/16"	9,6	17	3,5	14,5	12	16	5,3	4
25500.W0410	M10	3/8"	12,0	21	4,2	18,5	16	32	6,3	7
25500.W0412	M12	1/2"	14,2	24	5,0	20,0	24	56	7,9	11
25500.W0416	M16	5/8"	19,0	30	6,2	26,0	45	135	9,3	19
25500.W0420	M20	3/4"	23,2	36	7,5	31,0	71	280	11,6	32
25500.W0424	M24	7/8"	28,0	44	9,5	37,0	105	455	14,9	63
25500.W0430	M30	1-1/8", 1-3/16"	35,0	56	12,0	49,0	191	1050	18,8	127
25500.W0436	M36	1-1/4", 1-3/8"	42,0	68	15,0	60,0			23,4	234
25500.W0442	M42	1-1/2"	49,0	78	18,0	70,0			28,3	362
25500.W0448	M48	1-3/4"	56,0	92	22,0	82,0			35,0	642



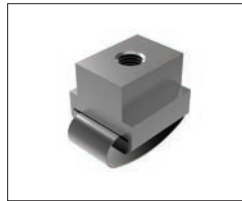


Nuts

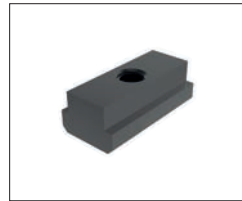
Available in heat treated steel, unless stated otherwise.



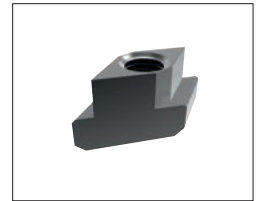
24000 T-Nut, Strength Class 10 DIN 508.



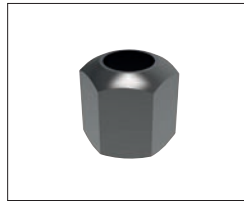
24010 T-Nut with Anti-Slip Device.



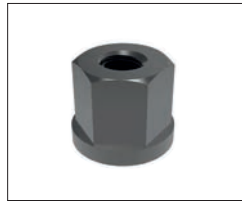
24100 Extended T-Nut. Strength Class 10.



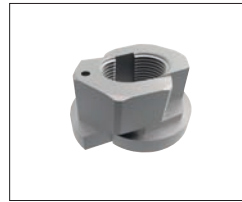
24120 Rhombus T-Nuts



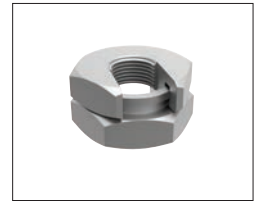
24300 Fixture Nuts. Strength Class 10 - DIN 6330B



24400 Collar Nuts, DIN 6331



24502 Fast Nut - With Collar Rapid Assembly Nut



24520 - Steel Slip-On Lock Nuts - Rapid Assembly Nut.



24600 Extension Nuts Strength Class 10.



24620 Swivel Nuts, Conical Seat

Washers

Available in a range of steel types - see product for details.



25000 - Hardened Steel - Plain Washers. DIN 6340.



25100 - Case Hardened Steel - Spherical Seat Washers. Type C - DIN 6319C.



25400 - Case Hardened Steel - Dished Washers, Type D - DIN 6319D.



25700 - Tempered Steel - Dished Washers, Type G - DIN 6319G.



25900 - Stainless Steel Compact Spherical Washer, Conical Seat, similar to DIN6319