

32800

SPRING PLUNGER & DETENT PINS

Material

Body: free cutting steel, blackened.
 Ball: ball bearing steel 1.3505 (100Cr6) hardened, stainless steel, hardened or Thermoplastic white (POM).
 Spring: stainless steel or plastic (PU).

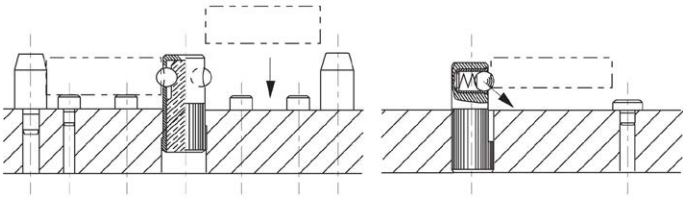
Technical Notes

The lateral spring plunger must be inserted into a bore to measure at least l_3 . Positions and applies pressure. Spring loads * = statistical average values.

Tips

When storing the fixtures, no pressure should be applied to the plastic spring.

Order No.	Ball type	Spring load	d_1 +0.1	d_2	l_1	l_2	l_3	b	Location hole tol. H8	s	Spring load N F_1	Spring load N F_2	Temperature °C max.	Weight g
32800.W0008	Stainless, One	Normal	8	3,0	25	3,6	6	3,2	8	0,8	2,5	6,5	-30/+50	9
32800.W0010	Stainless, One	Normal	10	4,0	30	4,2	7	4,0	10	1,0	4,5	9,0	-30/+50	17
32800.W0012	Stainless, One	Normal	12	5,0	35	4,8	9	5,0	12	1,6	6,5	13,0	-30/+50	29
32800.W0014	Stainless, One	Normal	14	6,5	40	5,8	10	5,4	14	1,9	8,0	18,0	-30/+50	43
32800.W0108	Thermo, One	Normal	8	3,0	25	3,6	6	3,2	8	0,8	2,5	6,5	-30/+50	9
32800.W0110	Thermo, One	Normal	10	4,0	30	4,2	7	4,0	10	1,0	4,5	9,0	-30/+50	17
32800.W0112	Thermo, One	Normal	12	5,0	35	4,8	9	5,0	12	1,6	6,5	13,0	-30/+50	28
32800.W0114	Thermo, One	Normal	14	6,5	40	5,8	10	5,4	14	1,9	8,0	18,0	-30/+50	42
32800.W0410	Steel, One	Increased	10	5,5	30	7,0	8	4,5	10	1,0	60,0	170,0	-40/+80	9
32800.W0412	Steel, One	Increased	12	6,5	35	8,0	9	5,5	12	1,5	80,0	260,0	-40/+80	14
32800.W0414	Steel, One	Increased	14	8,0	40	9,0	10	6,5	14	2,0	120,0	480,0	-40/+80	20
32800.W0616	Steel, Double	Increased	16	5,5	35	7,0	11	15,0	16	1,5	110,0	220,0	-40/+80	21
32800.W0618	Steel, Double	Increased	18	6,5	40	8,0	12	17,0	18	1,8	120,0	330,0	-40/+80	27
32800.W0622	Steel, Double	Increased	22	8,0	45	9,0	15	21,0	22	2,5	130,0	540,0	-40/+80	45





A Wide Selection of Solutions

- Locating and positioning.
- Indexing.
- Securing.
- Positive locking.
- Rapid adjustment of all kinds of tables, platforms and fixtures.
- Machine and fixture design.
- OEM products.
- Sports equipment.
- Medical aides (wheelchairs etc.).
- Aerospace.
- Machine cabinets.

Applications

Materials

Locking or Non Locking

Handling and Actuation Methods

Mounting Options

Additional Technical Notes

Spring Loads



Steel with plastic grip



Stainless with plastic grip



Stainless body and grip



Locking (park)



Non locking (spring back)



Push pull



Standard grip



Lever grip



T-handle



Pull ring



Threaded for bespoke handle



Fine threaded (standard)



Coarse thread



Flange mount



Thin wall mount



Weldable

- Unless otherwise stated, grips on index plungers are not removable.
- Many of the pins on index plungers are toleranced to either the pin or the hole. Please refer to the specific product table.
- Index plungers are not recommended for shear load applications.

	Pin Tol.	Hole Tol.
①	h_9	+0,03 +0,08
②	-0,02 -0,04	H_7

s Stroke, or movement of plunger's pin.

f₁ The force required in Newtons (N) to overcome the static strength of the spring and achieve initial movement of the plunger's pin.

f₂ The force required in Newtons (N) to fully compress the spring until the pin is fully depressed against the plunger's body.

