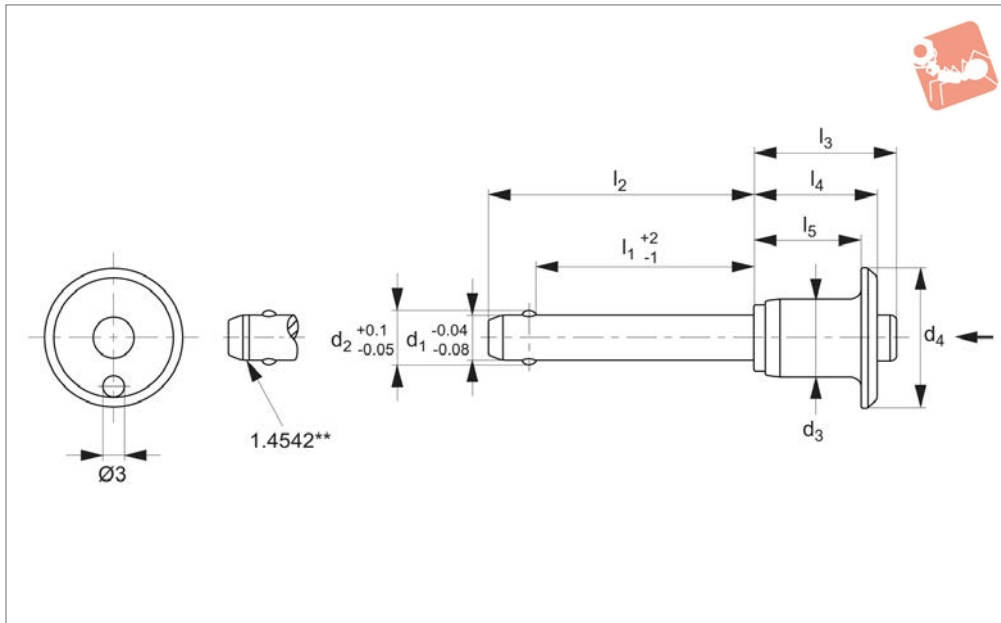


Clamp Lock Pins - Single Acting button handle - stainless steel

Ball Lock Pins & Quick Release



33230

BALL LOCK PINS & QUICK RELEASE PINS

Material

Type One

Pin: Stainless steel 1.4305 (AISI 303).

Type Two

Pin: Stainless steel 1.4542 (AISI 630), precipitation hardened.

Both

Handle: Aluminium, black.

Button: Stainless steel, yellow.

Spring: Stainless steel.

Technical Notes

Not suitable for lifting loads.

Corrosion resistant.

Press button = unlocking.

Release button = clamping.

For securing in blind holes H_{11} . Tempera-

ture range -30 to 150°C.

Quick fastening, adjusting and locking of frequently repeated connections.

Tips

Used with:

33250: Lanyards & retaining cables

Important Notes

*Shearing resistance similar to DIN 50141.

Order No.	d_1	Type	d_2	d_3	d_4	Weight g	
33230.W0022	6	Type One	Stainless 1.4305	6.2	11.3	20	13
33230.W0122	6	Type Two	Stainless 1.4542	6.2	11.3	20	13
33230.W0024	6	Type One	Stainless 1.4305	6.2	11.3	20	15
33230.W0124	6	Type Two	Stainless 1.4542	6.2	11.3	20	15
33230.W0028	6	Type One	Stainless 1.4305	6.2	11.3	20	19
33230.W0128	6	Type Two	Stainless 1.4542	6.2	11.3	20	19
33230.W0032	6	Type One	Stainless 1.4305	6.2	11.3	20	23
33230.W0132	6	Type Two	Stainless 1.4542	6.2	11.3	20	23
33230.W0042	8	Type One	Stainless 1.4305	8.3	14.1	25	25
33230.W0142	8	Type Two	Stainless 1.4542	8.3	14.1	25	25
33230.W0044	8	Type One	Stainless 1.4305	8.3	14.1	25	28
33230.W0144	8	Type Two	Stainless 1.4542	8.3	14.1	25	28
33230.W0048	8	Type One	Stainless 1.4305	8.3	14.1	25	36
33230.W0148	8	Type Two	Stainless 1.4542	8.3	14.1	25	36
33230.W0052	8	Type One	Stainless 1.4305	8.3	14.1	25	43
33230.W0152	8	Type Two	Stainless 1.4542	8.3	14.1	25	43
33230.W0056	8	Type One	Stainless 1.4305	8.3	14.1	25	51
33230.W0156	8	Type Two	Stainless 1.4542	8.3	14.1	25	51
33230.W0062	10	Type One	Stainless 1.4305	10.3	14.1	25	35
33230.W0162	10	Type Two	Stainless 1.4542	10.3	14.1	25	35
33230.W0066	10	Type One	Stainless 1.4305	10.3	14.1	25	47
33230.W0166	10	Type Two	Stainless 1.4542	10.3	14.1	25	47
33230.W0070	10	Type One	Stainless 1.4305	10.3	14.1	25	58
33230.W0170	10	Type Two	Stainless 1.4542	10.3	14.1	25	58
33230.W0072	10	Type One	Stainless 1.4305	10.3	14.1	25	70
33230.W0172	10	Type Two	Stainless 1.4542	10.3	14.1	25	70
33230.W0074	10	Type One	Stainless 1.4305	10.3	14.1	25	83
33230.W0174	10	Type Two	Stainless 1.4542	10.3	14.1	25	83

Ball Lock Pins & Quick Release



Clamp Lock Pins - Single Acting

button handle - stainless steel



BALL LOCK PINS & QUICK RELEASE PINS

Order No.	l ₁	l ₂	l ₃	l ₄	Location hole dia. tol. H11	Shearing resistance, double (1.4305)		Shearing resistance, double (1.4542)	
						kN min.		kN min.	
33230.W0022	10	17.4	17.6	20.7	6	21	35		
33230.W0122	10	17.4	17.6	20.7	6	21	35		
33230.W0024	20	27.4	17.6	20.7	6	21	35		
33230.W0124	20	27.4	17.6	20.7	6	21	35		
33230.W0028	40	47.4	17.6	20.7	6	21	35		
33230.W0128	40	47.4	17.6	20.7	6	21	35		
33230.W0032	60	67.4	17.6	20.7	6	21	35		
33230.W0132	60	67.4	17.6	20.7	6	21	35		
33230.W0042	10	18.6	22.6	27.3	8	38	63		
33230.W0142	10	18.6	22.6	27.3	8	38	63		
33230.W0044	20	28.6	22.6	27.3	8	38	63		
33230.W0144	20	28.6	22.6	27.3	8	38	63		
33230.W0048	40	48.6	22.6	27.3	8	38	63		
33230.W0148	40	48.6	22.6	27.3	8	38	63		
33230.W0052	60	68.6	22.6	27.3	8	38	63		
33230.W0152	60	68.6	22.6	27.3	8	38	63		
33230.W0056	80	88.6	22.6	27.3	8	38	63		
33230.W0156	80	88.6	22.6	27.3	8	38	63		
33230.W0062	20	30.0	22.6	27.3	10	60	100		
33230.W0162	20	30.0	22.6	27.3	10	60	100		
33230.W0066	40	50.0	22.6	27.3	10	60	100		
33230.W0166	40	50.0	22.6	27.3	10	60	100		
33230.W0070	60	70.0	22.6	27.3	10	60	100		
33230.W0170	60	70.0	22.6	27.3	10	60	100		
33230.W0072	80	100.0	22.6	27.3	10	60	100		
33230.W0172	80	100.0	22.6	27.3	10	60	100		
33230.W0074	100	120.0	22.6	27.3	10	60	100		
33230.W0174	100	120.0	22.6	27.3	10	60	100		



Wixroyd Ball Lock Pins

applications

33060 - 33250
Positioning Elements

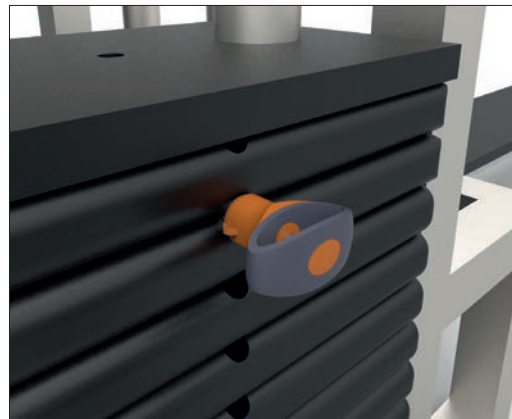


Sound Rigging Systems

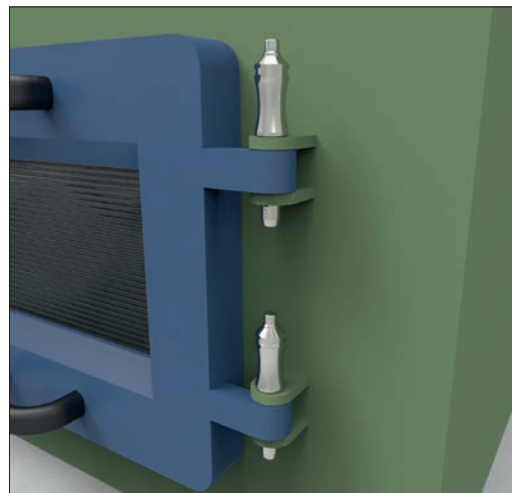
Ball lock pins on a sound rigging system. Offering secure fixing with high shear forces and easy fitting for operators at heights.

In addition full black powder coating of grip and actuation button eliminates glare from other stage lighting.

BALL LOCK PINS & QUICK RELEASE PINS



Gym Equipment



Scientific and Medical

ov-W33060.BK-A-TOR1706-W33250-A-TLA1066-a-rmh - Updated - 27-10-2022



Pin Material

1.4305 (AISI 303) - shear force approx. 60% of higher material version 1.4542

1.4542 (AISI 630) - identified by the ridge on the pin

CRES 17-4PH (AMS 5643) aviation standard



Handle Style



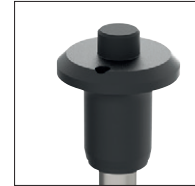
Plastic tri-star



T-handled, metal



L-handled, metal



Mushroom, metal



Single piece metal, contoured



Special plastic self-spring



Adjustable grip length, plastic



Key ring



Safety, metal



Mushroom Type B aviation

Type R aviation

Lanyards and Locating Bushes



Stainless wire - (coated) - 2 x key ring



Stainless wire - Key ring and fixing loop



Plastic - 2 x cable tie



Steel wire - (coated) - 2 x key ring



Stainless bead chain - 2 x key ring



Locating bushes

Actuation



Press = unlock
Release = lock (standard)



Press = unlock and position
Release = lock and simultaneous clamp



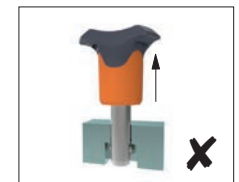
Simple spring loaded balls "pullout pin"

Important Note

Important Note: Ball lock pins are not suited to lifting applications!
For quick release lifting pins, see part 33400.



Shear force



Lifting force

Special Variations

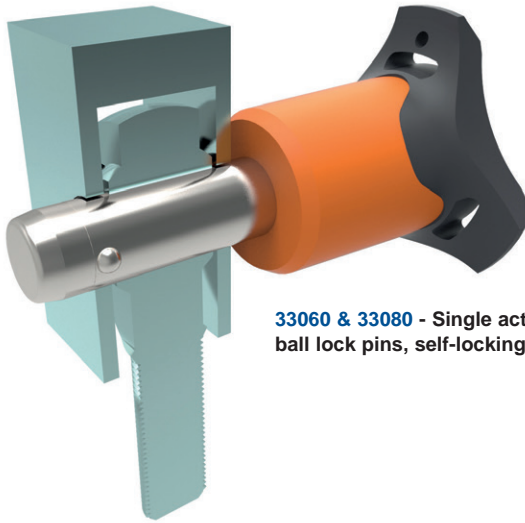


Variations on our standard designs are possible, please contact our sales team for technical assistance. Quick production on specials can be as little as 3 weeks.



Applications

- Positioning.
- Lifting.
- Locking.
- Indexing.
- Joining.



33060 & 33080 - Single acting ball lock pins, self-locking.



33194 - Single acting ball lock pins, self locking, simple finish.



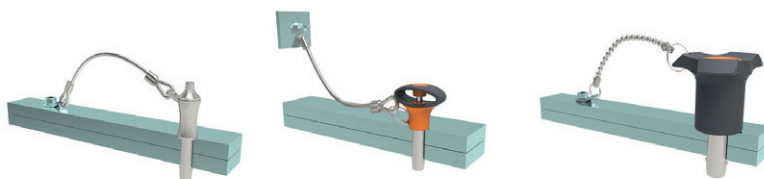
33140 - Socket pins, non-locking, spring loaded balls.



33100 - Single acting ball lock pin, self locking.



33180 - Clamping pins, with span compensation, self-locking.



33250 & 33270 - Lanyards.



33220 - Ball lock pins, single acting - L-handle