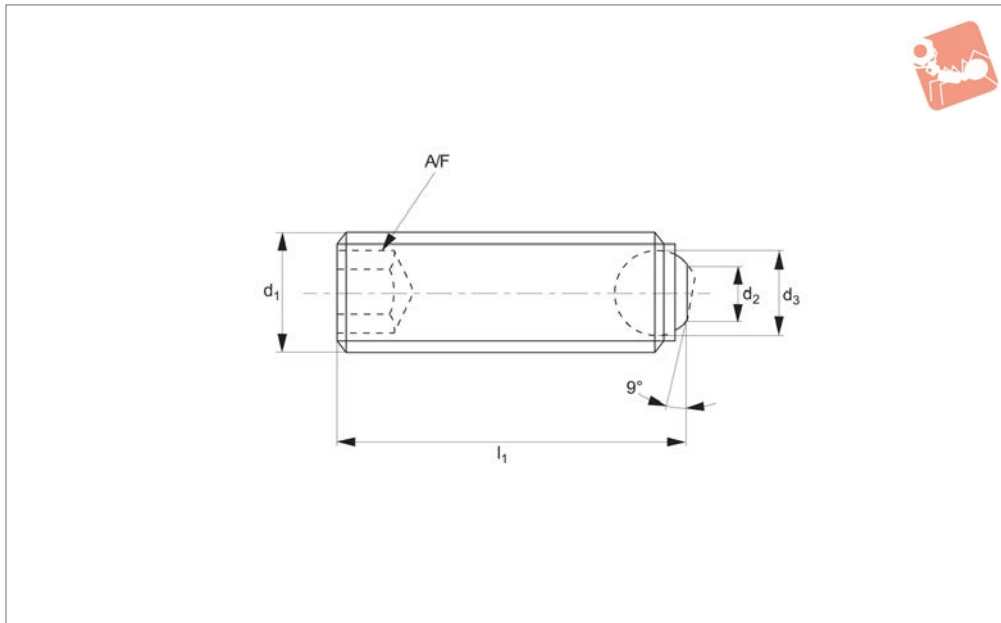




Thrust Screws - Ball Ended

headless - flat-faced ball - metal

Thrust Screws



34043

THRUST SCREWS

Material

Steel type-

Body: steel, heat-treated, 1200 ±100 N/mm².

Ball: ball bearing steel, hardened.

Stainless steel type-

Body: stainless steel (AISI 303, 1.4305).

Ball: stainless steel, hardened.

Technical Notes

For clamping, tightening or supporting surfaces that are not exactly parallel.

Max. temperature 250°C.

Tips

Ball not secured against rotation. It is

possible for the flat-faced ball to flip and expose the spherical face of the ball. For other types see following pages.

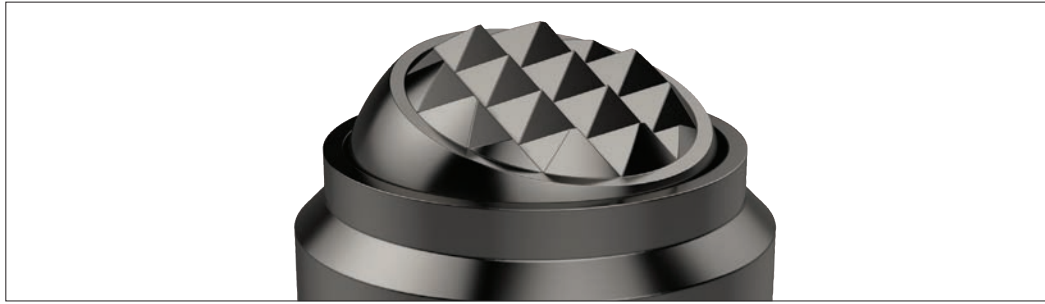
Important Notes

*Max. static load relates to steel version only.

Order No.	Material	Ball type	d ₁	d ₂	d ₃	l ₁	A/F	Static load kN max.	Weight g
34043.W0542	Steel	Flat, Plain	M 4	1.8	2.5	5.6	2.0	3.5	0.3
34043.W0543	Steel	Flat, Plain	M 4	1.8	2.5	7.6	2.0	3.5	0.6
34043.W0544	Steel	Flat, Plain	M 4	1.8	2.5	9.6	2.0	3.5	0.5
34043.W0545	Steel	Flat, Plain	M 4	1.8	2.5	11.6	2.0	3.5	0.9
34043.W0546	Steel	Flat, Plain	M 4	1.8	2.5	15.6	2.0	3.5	1.0
34043.W0552	Steel	Flat, Plain	M 5	2.2	3.0	7.5	2.5	4.5	0.6
34043.W0553	Steel	Flat, Plain	M 5	2.2	3.0	9.5	2.5	4.5	0.8
34043.W0554	Steel	Flat, Plain	M 5	2.2	3.0	11.5	2.5	4.5	1.1
34043.W0555	Steel	Flat, Plain	M 5	2.2	3.0	15.5	2.5	4.5	1.7
34043.W0556	Steel	Flat, Plain	M 5	2.2	3.0	19.5	2.5	4.5	2.2
34043.W0558	Steel	Flat, Plain	M 5	2.2	3.0	24.5	2.5	4.5	2.6
34043.W0562	Steel	Flat, Plain	M 6	3.2	4.0	10.0	3.0	9.0	1.5
34043.W0563	Steel	Flat, Plain	M 6	3.2	4.0	12.0	3.0	9.0	1.6
34043.W0564	Steel	Flat, Plain	M 6	3.2	4.0	16.0	3.0	9.0	2.5
34043.W0565	Steel	Flat, Plain	M 6	3.2	4.0	20.0	3.0	9.0	3.2
34043.W0566	Steel	Flat, Plain	M 6	3.2	4.0	25.0	3.0	9.0	3.8
34043.W0581	Steel	Flat, Plain	M 8	4.5	5.5	10.0	4.0	15.0	2.6
34043.W0582	Steel	Flat, Plain	M 8	4.5	5.5	12.0	4.0	15.0	2.9
34043.W0583	Steel	Flat, Plain	M 8	4.5	5.5	16.0	4.0	15.0	4.0
34043.W0584	Steel	Flat, Plain	M 8	4.5	5.5	20.0	4.0	15.0	5.3
34043.W0585	Steel	Flat, Plain	M 8	4.5	5.5	25.0	4.0	15.0	6.8
34043.W0586	Steel	Flat, Plain	M 8	4.5	5.5	30.0	4.0	15.0	8.4
34043.W0601	Steel	Flat, Plain	M10	6.0	7.0	12.0	5.0	20.0	4.7
34043.W0602	Steel	Flat, Plain	M10	6.0	7.0	16.0	5.0	20.0	6.1
34043.W0603	Steel	Flat, Plain	M10	6.0	7.0	20.0	5.0	20.0	7.9
34043.W0604	Steel	Flat, Plain	M10	6.0	7.0	25.0	5.0	20.0	10.0
34043.W0605	Steel	Flat, Plain	M10	6.0	7.0	30.0	5.0	20.0	13.0
34043.W0606	Steel	Flat, Plain	M10	6.0	7.0	35.0	5.0	20.0	15.0



Order No.	Material	Ball type	d ₁	d ₂	d ₃	l ₁	A/F	Static load kN max.	Weight g
34043.W0608	Steel	Flat, Plain	M10	6.0	7.0	40.0	5.0	20.0	18.0
34043.W0621	Steel	Flat, Plain	M12	7.2	8.5	16.0	6.0	30.0	9.1
34043.W0622	Steel	Flat, Plain	M12	7.2	8.5	20.0	6.0	30.0	11.0
34043.W0623	Steel	Flat, Plain	M12	7.2	8.5	25.0	6.0	30.0	14.0
34043.W0624	Steel	Flat, Plain	M12	7.2	8.5	30.0	6.0	30.0	18.0
34043.W0626	Steel	Flat, Plain	M12	7.2	8.5	40.0	6.0	30.0	25.0
34043.W0628	Steel	Flat, Plain	M12	7.2	8.5	50.0	6.0	30.0	32.0
34043.W0661	Steel	Flat, Plain	M16	10.7	12.0	20.0	8.0	60.0	21.0
34043.W0662	Steel	Flat, Plain	M16	10.7	12.0	25.0	8.0	60.0	26.0
34043.W0664	Steel	Flat, Plain	M16	10.7	12.0	35.0	8.0	60.0	39.0
34043.W0666	Steel	Flat, Plain	M16	10.7	12.0	50.0	8.0	60.0	60.0
34043.W0702	Steel	Flat, Plain	M20	13.5	15.0	30.0	10.0	90.0	49.0
34043.W0704	Steel	Flat, Plain	M20	13.5	15.0	40.0	10.0	90.0	70.0
34043.W0705	Steel	Flat, Plain	M20	13.5	15.0	50.0	10.0	90.0	90.0
34043.W0706	Steel	Flat, Plain	M20	13.5	15.0	60.0	10.0	90.0	111.0
34043.W0742	Steel	Flat, Plain	M24	15.8	18.0	35.0	12.0	120.0	86.0
34043.W0744	Steel	Flat, Plain	M24	15.8	18.0	50.0	12.0	120.0	128.0
34043.W0746	Steel	Flat, Plain	M24	15.8	18.0	80.0	12.0	120.0	219.0
34043.W0827	Stainless	Flat, Plain	M 4	1.8	2.5	5.6	2.0	0.5	
34043.W0828	Stainless	Flat, Plain	M 4	1.8	2.5	7.6	2.0	0.6	
34043.W0829	Stainless	Flat, Plain	M 4	1.8	2.5	9.6	2.0	0.5	
34043.W0830	Stainless	Flat, Plain	M 4	1.8	2.5	11.6	2.0	0.9	
34043.W0832	Stainless	Flat, Plain	M 4	1.8	2.5	15.6	2.0	1.0	
34043.W0833	Stainless	Flat, Plain	M 5	2.2	3.0	7.5	2.5	0.6	
34043.W0834	Stainless	Flat, Plain	M 5	2.2	3.0	9.5	2.5	0.8	
34043.W0835	Stainless	Flat, Plain	M 5	2.2	3.0	11.5	2.5	1.1	
34043.W0836	Stainless	Flat, Plain	M 5	2.2	3.0	15.5	2.5	1.7	
34043.W0837	Stainless	Flat, Plain	M 5	2.2	3.0	19.5	2.5	2.2	
34043.W0838	Stainless	Flat, Plain	M 5	2.2	3.0	24.5	2.5	2.6	
34043.W0840	Stainless	Flat, Plain	M 6	3.2	4.0	10.0	3.0	1.5	
34043.W0842	Stainless	Flat, Plain	M 6	3.2	4.0	12.0	3.0	1.6	
34043.W0844	Stainless	Flat, Plain	M 6	3.2	4.0	16.0	3.0	2.5	
34043.W0845	Stainless	Flat, Plain	M 6	3.2	4.0	20.0	3.0	3.2	
34043.W0846	Stainless	Flat, Plain	M 6	3.2	4.0	25.0	3.0	3.8	
34043.W0850	Stainless	Flat, Plain	M 8	4.5	5.5	10.0	4.0	2.6	
34043.W0852	Stainless	Flat, Plain	M 8	4.5	5.5	12.0	4.0	2.9	
34043.W0853	Stainless	Flat, Plain	M 8	4.5	5.5	16.0	4.0	4.0	
34043.W0854	Stainless	Flat, Plain	M 8	4.5	5.5	20.0	4.0	5.3	
34043.W0855	Stainless	Flat, Plain	M 8	4.5	5.5	25.0	4.0	6.8	
34043.W0856	Stainless	Flat, Plain	M 8	4.5	5.5	30.0	4.0	8.4	
34043.W0860	Stainless	Flat, Plain	M10	6.0	7.0	12.0	5.0	4.7	
34043.W0862	Stainless	Flat, Plain	M10	6.0	7.0	16.0	5.0	6.1	
34043.W0863	Stainless	Flat, Plain	M10	6.0	7.0	20.0	5.0	7.9	
34043.W0864	Stainless	Flat, Plain	M10	6.0	7.0	25.0	5.0	10.0	
34043.W0865	Stainless	Flat, Plain	M10	6.0	7.0	30.0	5.0	13.0	
34043.W0866	Stainless	Flat, Plain	M10	6.0	7.0	35.0	5.0	15.0	
34043.W0868	Stainless	Flat, Plain	M10	6.0	7.0	40.0	5.0	18.0	
34043.W0870	Stainless	Flat, Plain	M12	7.2	8.5	16.0	6.0	9.1	
34043.W0872	Stainless	Flat, Plain	M12	7.2	8.5	20.0	6.0	11.0	
34043.W0873	Stainless	Flat, Plain	M12	7.2	8.5	25.0	6.0	14.0	
34043.W0874	Stainless	Flat, Plain	M12	7.2	8.5	30.0	6.0	18.0	
34043.W0876	Stainless	Flat, Plain	M12	7.2	8.5	40.0	6.0	25.0	
34043.W0878	Stainless	Flat, Plain	M12	7.2	8.5	50.0	6.0	32.0	
34043.W0880	Stainless	Flat, Plain	M16	10.7	12.0	20.0	8.0	21.0	
34043.W0882	Stainless	Flat, Plain	M16	10.7	12.0	25.0	8.0	26.0	
34043.W0884	Stainless	Flat, Plain	M16	10.7	12.0	35.0	8.0	39.0	
34043.W0886	Stainless	Flat, Plain	M16	10.7	12.0	50.0	8.0	60.0	

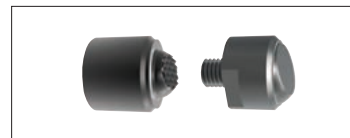
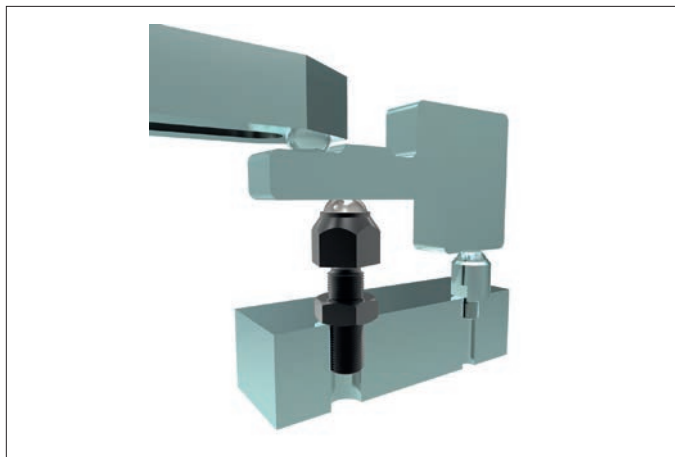


Clamping, supporting and aligning non-parallel and uneven surfaces is greatly simplified with the use of Wixroyd self-aligning pads and thrust screws. Available with ridged faces for improved holding of cast components, or plastic faces for holding more delicate parts.



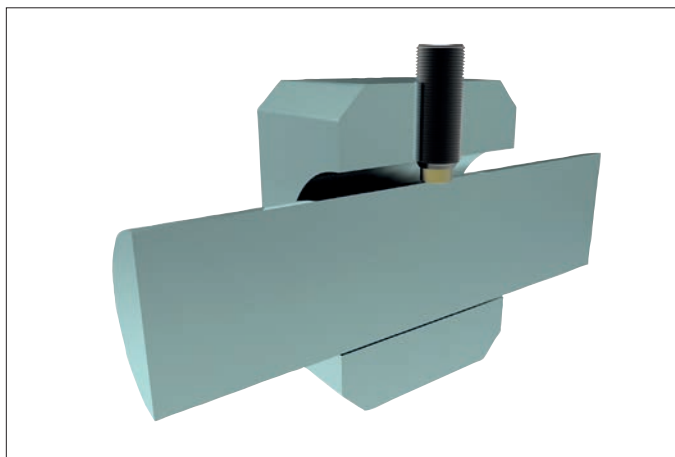
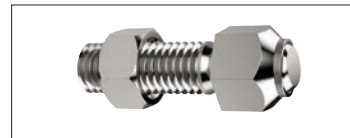
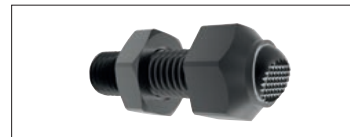
Self-aligning Thrust Screws

34000 to 34060 - Self-aligning thrust screws in sizes M6 to M24, ideal for clamping or supporting non-parallel surfaces.



Self-aligning Pads

34080 to 34121 - Self-aligning pads, both male and female mounting, ideal for accommodating variations between parts in fixtures.



Thrust Screws

34140 to 34160 - Thrust screws, with either brass or thermoplastic pads, are suitable for gentle clamping and positioning more delicate parts.



THRUST SCREWS

ov-W34000-A-T-W34160.2-AP0124-T-self-aligning-pads-and-thrust-screws-a-rmh - Updated - 28-10-2022