

35440

GRIPPERS & REST PADS

Material

Hard metal ribbed, hard metal pointed, 60 HRC.

Technical Notes

d_1 - for use when press-fitting into softer

metals such as aluminium. The three protrusions ensure centering of insert. d_2 - for use when gluing or soldering in place.

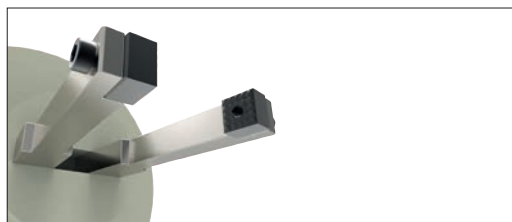
Tips

Can be integrated into fixtures, clamping jaws etc., to provide an abrasion-proof transmission of high holding forces on cast or forged workpieces.

Order No.	Tooth pattern	d_1 ± 0.1	h_1	h_2	d_2 ± 0.2	d_3 \approx	w_1	Weight g
35440.W0608	Fine	8.3	5.0	-	9.1	7.7	2	3
35440.W0611	Fine	11.3	5.0	-	12.1	10.6	2	6
35440.W0613	Fine	12.6	5.0	-	13.4	11.9	3	7
35440.W0615	Fine	$16,6^{\pm 1,5}$	5.0	-	17.4	16.0	3	12
35440.W0617	Fine	$21,6^{\pm 1,5}$	5.0	-	22.4	21.0	3	20
35440.W0628	Single Point	8.3	5.8	5	9.1	6.3	-	3
35440.W0631	Single Point	11.3	5.8	5	12.1	9.3	-	7
35440.W0633	Single Point	12.6	5.8	5	13.4	10.0	-	8



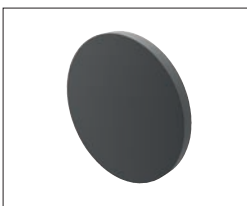
Grippers enhance workholding for multiple machining operations.



Grippers increase handling capability.

Pads and Gripper Options

Pads



Solid Carbide
High impact carbide pads, can be brazed or bonded into place.



Carbide Tipped
Constructed with high impact carbide pad brazed to a heat treated alloy steel body. Mount via tapped hole or a flat on the outside diameter for set screw mounting.



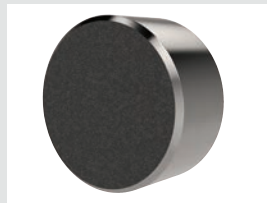
Hardened Steel
Made from 8620 steel, carburized and hardened to Rc 58/60 1.2mm with black oxide finish. Mount via tapped or counter bored hole.



Non-marking Thermoplast
Made from white thermoplast. Mount via tapped or counter bored hole.



Stainless Steel
Pad from 17-4 stainless steel, hardened to Rc 43/46. Mount via tapped or counter bored hole.



Abrasive Diamond Surface
Abrasive surface permanently fused to a 17-4 stainless steel pad, hardened to Rc 43/46. The surface texture is comparable to a 100 grit abrasive. Mount via tapped or counter bored hole.



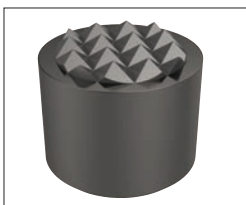
Soft Urethane Surface
Urethane surface is permanently bonded to a 300 series stainless steel pad. The urethane provides excellent protection against damage on delicate work surfaces. Tapped hole mounting.

see our website for our full range:
wixroyd.com

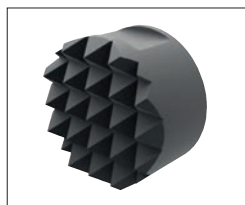
Grippers



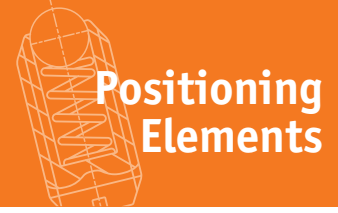
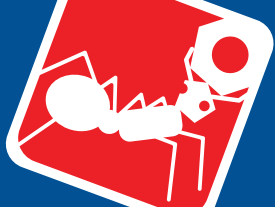
High Speed Tool Steel
Manufactured from M-2 high speed tool steel, hardened to Rc 60/62 with black oxide finish. Mount via tapped hole, counter bored hole or a flat on the outside diameter for set screw mounting.



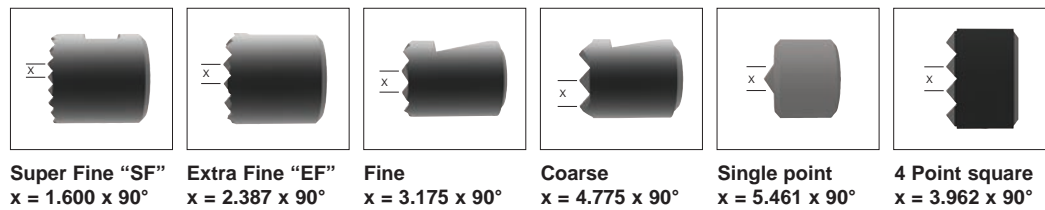
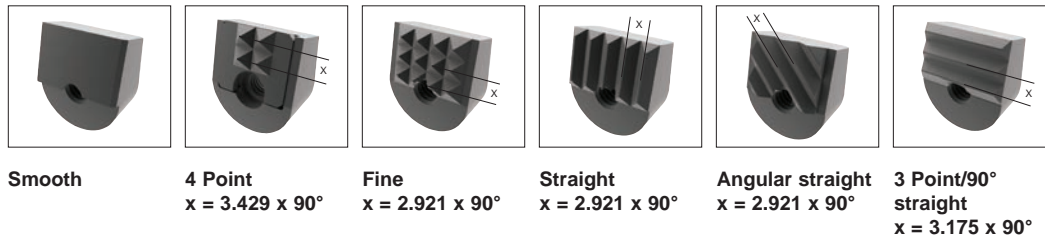
Carbide Tipped
Constructed with high impact carbide pad brazed to a heat treated alloy steel body. Mounts via tapped hole or a flat on the outside diameter for set screw mounting.



Solid Carbide
Manufactured from high impact carbide in a solid gripper pad or as a solid gripper body with a threaded brazed-in steel insert. Mount via tapped hole or a flat on the outside diameter for set screw mounting.



Tooth Pattern Specifications

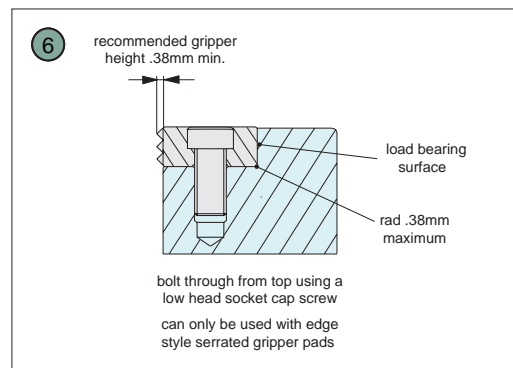
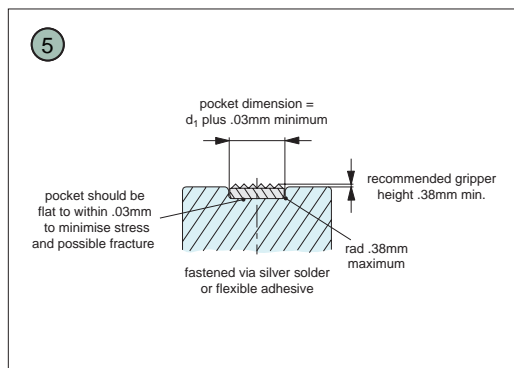
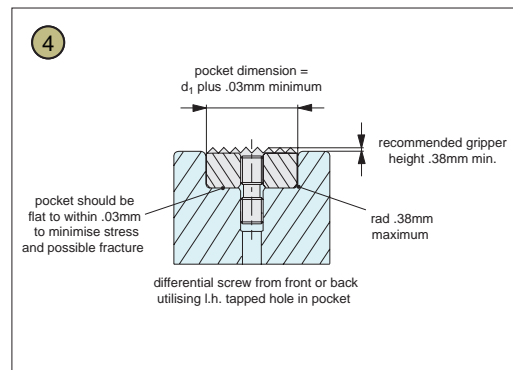
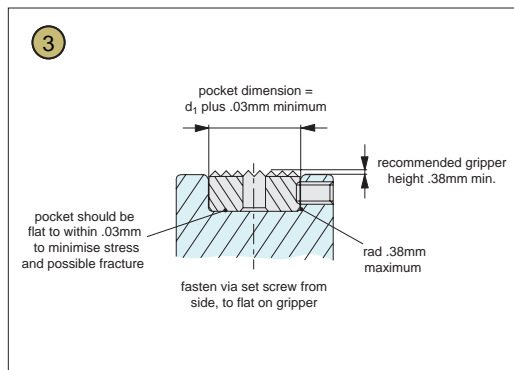
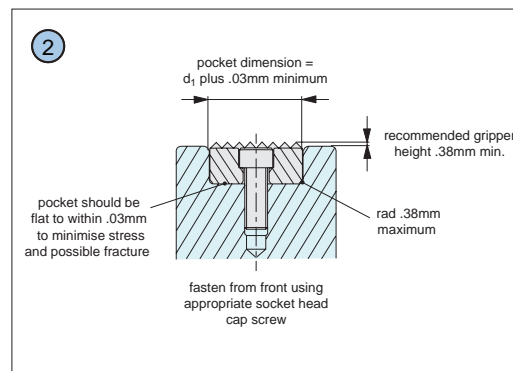
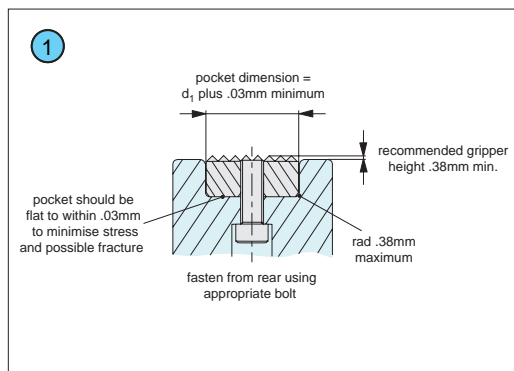


Angular Grippers

Our carbide and hardened steel grippers are available with a variety of tooth patterns, as specified on the product data tables.

Round/Square Grippers

Mounting options



Mounting Options for Carbide and Hardened Steel Grippers and Inserts.

Our carbide grippers and inserts can be installed in a number of different ways, the most suitable mounting method depends upon the specific insert – please refer to the product data table for specific information.

- 1 Round or square grippers and rest pads with tapped blind-hole or through hole tap.
- 2 Round or square grippers and rest pads with counter-bored hole.
- 3 Round grippers with flat on the O.D. for set screw mounting. Also square gripper mounting.
- 4 Round or square grippers with through tapped hole.
- 5 Round or square carbide pads.
- 6 Counter-bored edge grippers.



A Range of Specialist Gripping Pads to Suit Your Application

Urethane Coated



Unique urethane coat prevents marking of delicate components during machining or manipulation by robots. The urethane pad is permanently bonded to the stainless steel body of the gripping pad. With a bubbled texture, air is able to escape and hence avoid any suction action - enabling easy releasing of parts.

These are available in three different urethane durometers.



35 durometer:
Pencil rubber top

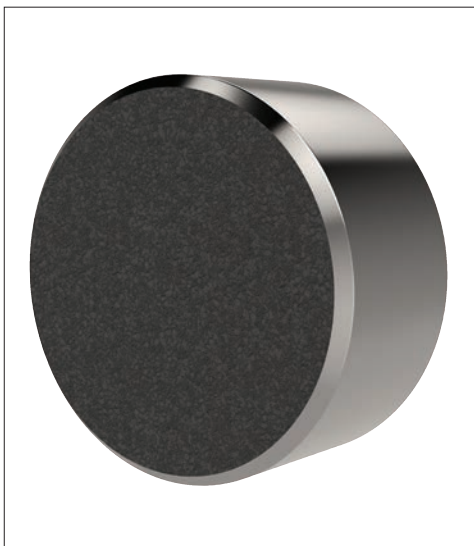


60 durometer:
Car tyre



80 durometer:
Skateboard wheel

Abrasive
Diamond Coated



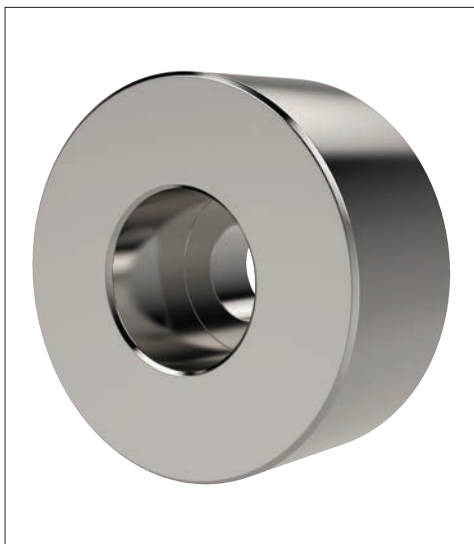
To improve handling of smooth or slippery components, with a minimum of clamping pressure, our abrasive diamond coated pads provide an excellent solution.

Diamond powders are permanently fused to a 17-4 stainless pad, to provide an abrasive surface comparable to 100 grit value.



Sandpaper of 100
grit texture

Stainless Pads



Pads of 17-4 Stainless, hardened to RC 43/46 provide solutions to applications where material selection is of greater importance; for example nuclear or food processing or pharmaceutical applications.