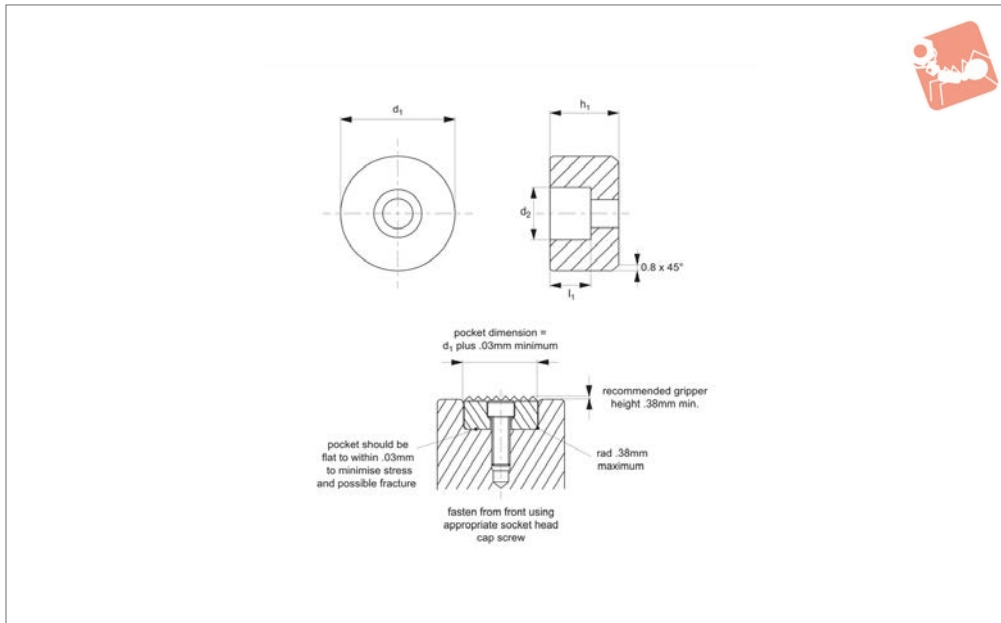




# Rest Pads - Steel and Thermoplastic

round - front fixing

## Grippers & Rest Pads



**35984**

GRIPPERS & REST PADS

### Material

Steel (AISI 8620), hardened to HRc 58-60.  
Black oxide finish.  
Thermoplastic, white.

etc in jigs and fixtures.

$h_1 = \text{tol. of steel } \pm 0,03, \text{ tol. of thermoplastic } +0,00 -0,13.$

recommendations in technical diagram.

### Technical Notes

Can be used as rest pads, stops, supports

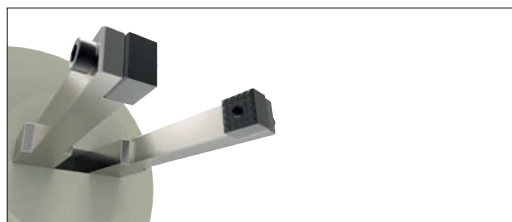
### Tips

Fasten from front using appropriate socket head cap screw. Note installation recom-

Order No.	Material	$d_1$ +0.00 -0.13	$d_2$ to fit DIN 912	$h_1$	$l_1$
35984.W0100	Steel	10	M 3	10	5.0
35984.W0102	Steel	10	M 3	12	5.0
35984.W0120	Steel	12	M 4	10	5.6
35984.W0122	Steel	12	M 4	12	5.6
35984.W0160	Steel	16	M 5	10	6.6
35984.W0162	Steel	16	M 5	12	6.6
35984.W0200	Steel	20	M 6	10	7.6
35984.W0202	Steel	20	M 6	12	7.6
35984.W0250	Steel	25	M 6	10	7.6
35984.W0252	Steel	25	M 6	12	7.6
35984.W1100	Plastic	10	M 3	10	5.0
35984.W1102	Plastic	10	M 3	12	5.0
35984.W1120	Plastic	12	M 4	10	5.6
35984.W1122	Plastic	12	M 4	12	5.6
35984.W1160	Plastic	16	M 5	10	6.6
35984.W1162	Plastic	16	M 5	12	6.6
35984.W1200	Plastic	20	M 6	10	7.6
35984.W1202	Plastic	20	M 6	12	7.6
35984.W1250	Plastic	25	M 6	10	7.6
35984.W1252	Plastic	25	M 6	12	7.6



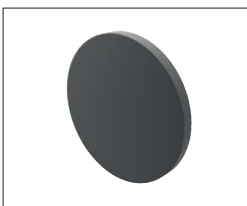
Grippers enhance workholding for multiple machining operations.



Grippers increase handling capability.

## Pads and Gripper Options

### Pads



**Solid Carbide**  
High impact carbide pads, can be brazed or bonded into place.



**Carbide Tipped**  
Constructed with high impact carbide pad brazed to a heat treated alloy steel body. Mount via tapped hole or a flat on the outside diameter for set screw mounting.



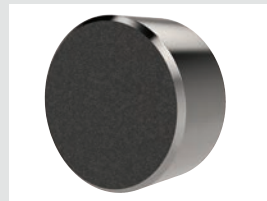
**Hardened Steel**  
Made from 8620 steel, carburized and hardened to Rc 58/60 1.2mm with black oxide finish. Mount via tapped or counter bored hole.



**Non-marking Thermoplast**  
Made from white thermoplast. Mount via tapped or counter bored hole.



**Stainless Steel**  
Pad from 17-4 stainless steel, hardened to Rc 43/46. Mount via tapped or counter bored hole.



**Abrasive Diamond Surface**  
Abrasive surface permanently fused to a 17-4 stainless steel pad, hardened to Rc 43/46. The surface texture is comparable to a 100 grit abrasive. Mount via tapped or counter bored hole.



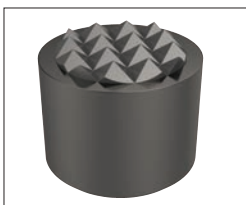
**Soft Urethane Surface**  
Urethane surface is permanently bonded to a 300 series stainless steel pad. The urethane provides excellent protection against damage on delicate work surfaces. Tapped hole mounting.

see our website for our full range:  
[wixroyd.com](http://wixroyd.com)

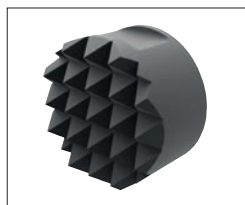
### Grippers



**High Speed Tool Steel**  
Manufactured from M-2 high speed tool steel, hardened to Rc 60/62 with black oxide finish. Mount via tapped hole, counter bored hole or a flat on the outside diameter for set screw mounting.



**Carbide Tipped**  
Constructed with high impact carbide pad brazed to a heat treated alloy steel body. Mounts via tapped hole or a flat on the outside diameter for set screw mounting.



**Solid Carbide**  
Manufactured from high impact carbide in a solid gripper pad or as a solid gripper body with a threaded brazed-in steel insert. Mount via tapped hole or a flat on the outside diameter for set screw mounting.