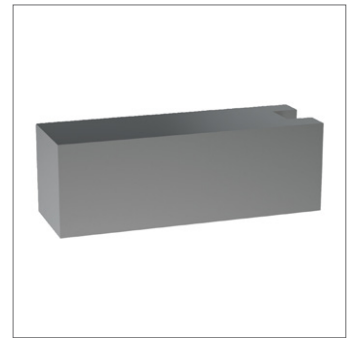
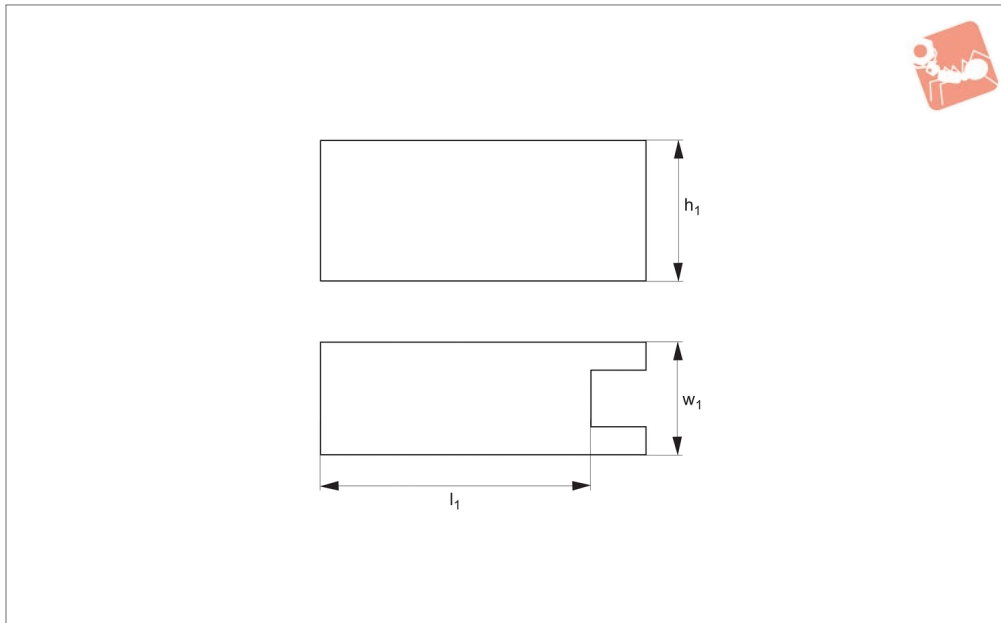




Clamping Arm Extension for modular toggle clamps

Heavy Duty Toggle Clamps



46070.1

HEAVY DUTY TOGGLE CLAMPS

Material

Steel, black oxide coated.
For welding.

Technical Notes

To suit modular toggle clamps 46050 and 46060.

Temperature range -10°C to +80°C.

Order No.	Size	$l_1 \times h_1 \times w_1$	Weight g
46070.W0002	2	40x15x15	81
46070.W0004	4	48x25x20	208
46070.W0006	6	60x30x25	390
46070.W0008	8	75x35x30	676
46070.W0010	10	94x35x35	970