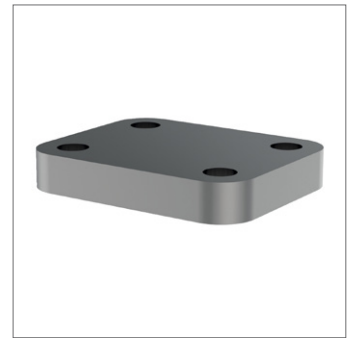
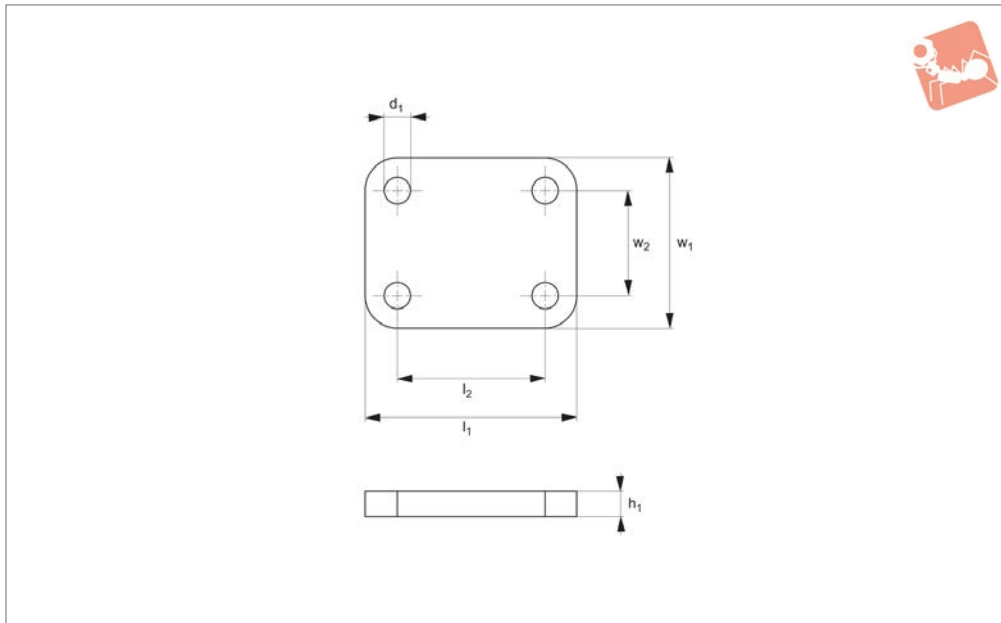




# Base Plate for modular toggle clamps

# Heavy Duty Toggle Clamps



## 46070.6

HEAVY DUTY TOGGLE CLAMPS

### Material

Steel, black oxide coated.  
For welding.

| Order No.   | Size | $h_1$ | $l_1$ | $l_2$ | $w_1$ | $w_2$ | $d_1$ | Weight<br>g |
|-------------|------|-------|-------|-------|-------|-------|-------|-------------|
| 46070.W0502 | 2+4  | 8     | 50    | 35    | 40    | 25    | 6.5   | 86          |
| 46070.W0506 | 6    | 8     | 50    | 30    | 60    | 40    | 8.5   | 211         |
| 46070.W0508 | 8    | 8     | 65    | 45    | 70    | 50    | 8.5   | 333         |
| 46070.W0510 | 10   | 10    | 70    | 50    | 80    | 60    | 10.5  | 406         |