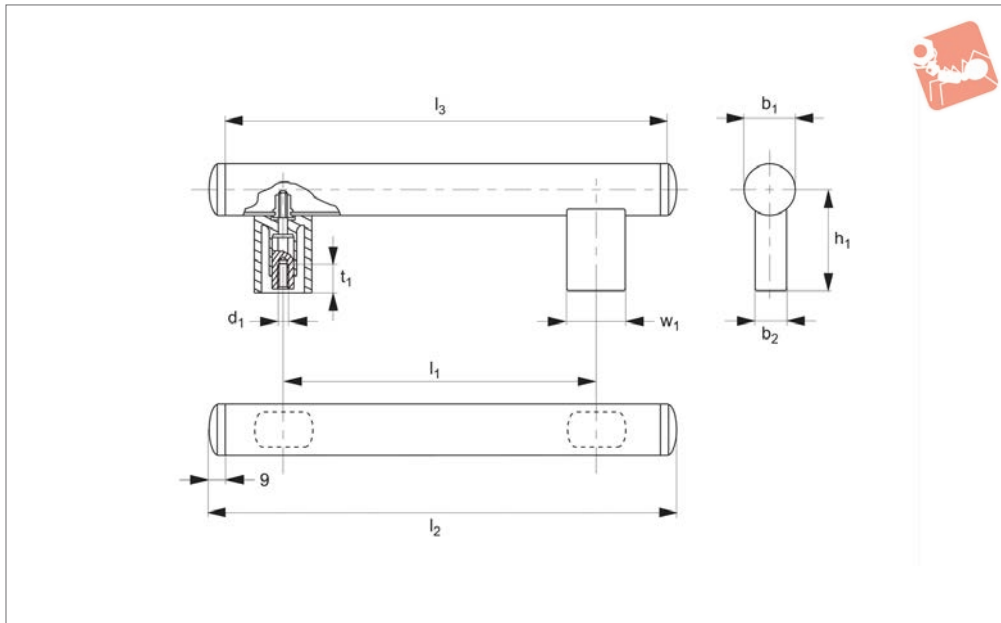


Tube Pull Handles

Clean line



79930

PULL HANDLES

Material

Handle shank: polyamide (PA 6), glass bead reinforced, semi-gloss in RAL9002 grey white.

Handle tube: aluminium section, ALMgSi 0,5, Ø30x1,5mm, powered coated in RAL9002 grey white.

Tube holder and tube cap: polyamide PA6 glass ball reinforced in similar RAL colour shade.

Technical Notes

Non detachable blind rivet nuts ensure that the handle tube cannot be torn out of

its connection to the shank. Minimum stress resistance 800N.

Tips

Especially suited for food and medical industries. All handle lengths and RAL shades are available on request.

Order No.	l_1	l_2	l_3	d_1	b_1	b_2	h_1	t_1	w_1
79930.W0200	200	288	270	M 6	30 x 1,5	20	60	17	34
79930.W0250	250	338	320	M 6	30 x 1,5	20	60	17	34
79930.W0300	300	388	300	M 6	30 x 1,5	20	60	17	34
79930.W0350	350	438	420	M 6	30 x 1,5	20	60	17	34
79930.W0400	400	488	470	M 6	30 x 1,5	20	60	17	34
79930.W0500	500	588	570	M 6	30 x 1,5	20	60	17	34
79930.W0600	600	688	670	M 6	30 x 1,5	20	60	17	34