

97100

SPANNERS & HOOK SPANNERS

Material

Body: anodised aluminium (high wear resistance).

Technical Notes

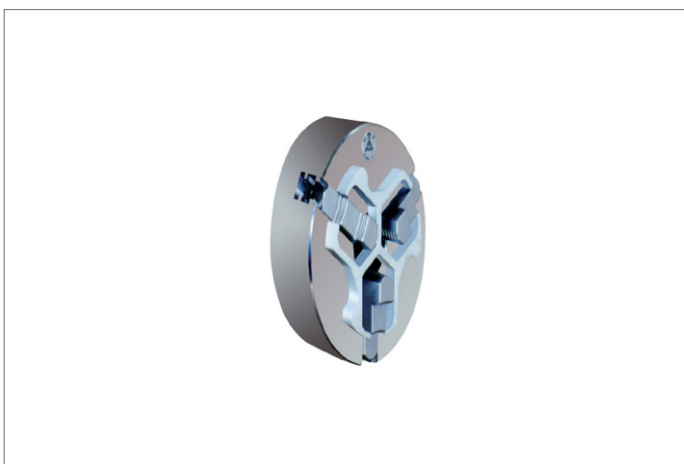
The Posi-stop replaces all forms of distance

sleeves and soft jaws normally used when turning short workpieces. They mount securely against the chuck face using three strong magnets and provide a fixed reference surface.

Tips

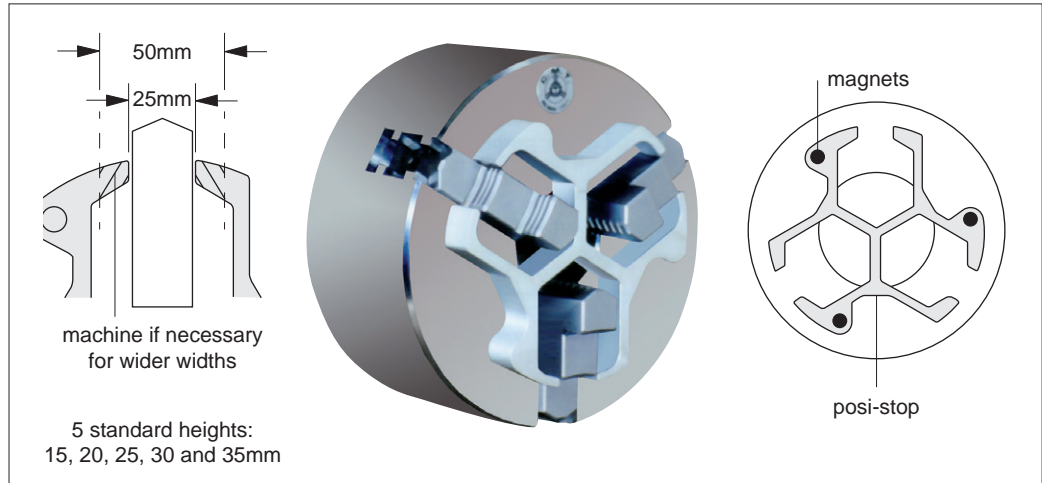
* w_1 - standard width jaw is 25mm, this can easily be milled or sawn larger for chucks with wider jaws up to 54mm.

Order No.	d_1	h_1 ± 0.01	w_1	w_2	Type
97100.W0015	150	15	25	55	Single
97100.W0020	150	20	25	55	Single
97100.W0025	150	25	25	55	Single
97100.W0030	150	30	25	55	Single
97100.W0035	150	35	25	55	Single
97100.W0040	150	40	25	55	Single
97100.W0503	-	1 of each - 15, 20, 25	-	-	Set of 3
97100.W0504	-	1 of each - 15, 20, 25, 30	-	-	Set of 4
97100.W0505	-	1 of each - 15, 20, 25, 30, 35	-	-	Set of 5
97100.W0506	-	1 of each - 15, 20, 25, 30, 35, 40	-	-	Set of 6





97100 Posi-Stops

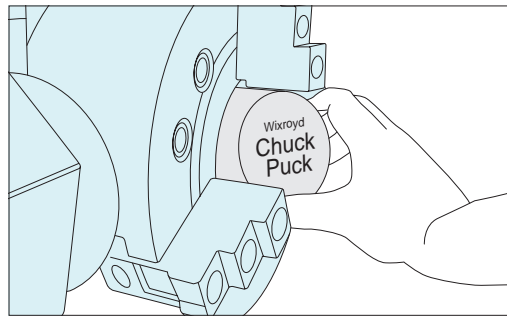


Chuck “Posi-stops” provide a quick and accurate method of moving workpieces away from the face of the chuck. Often used to enable the workpiece to be machined more closely to its extremity or for shorter workpieces.

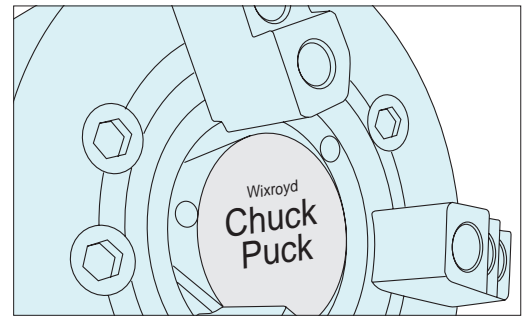
Each posi-stop has strong magnets on the bottom face so that the stop snaps firmly over the chuck jaws and onto the chuck face. There are five standard thicknesses; 15, 20, 25, 30 and 35mm (accuracy $\pm 0.01\text{mm}$) or they can be purchased as a set.

The posi-stops are made for a standard jaw width of 25mm but they can easily be opened up (mill or saw) to accommodate wider jaw widths.

97103 Chuck Puck

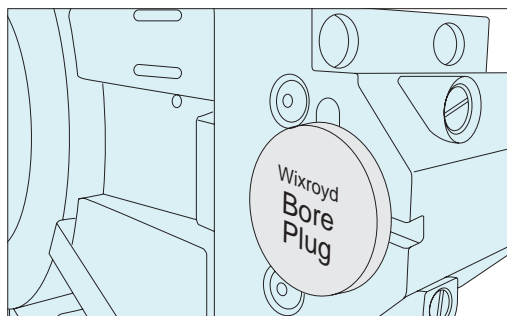


Chuck plug easy to install - just squeeze into the chuck hole.



Prevents build up of swarf and coolant, reduces vibration as well as wear of the chuck and spindle.

97104 Bore Plug



Prevents swarf accumulation and associated damage in non-active boring bar holders.