

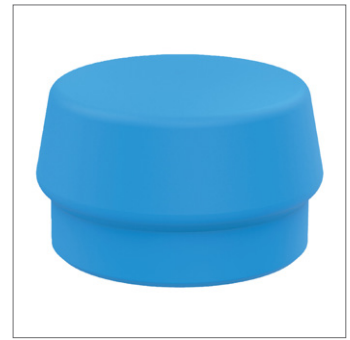
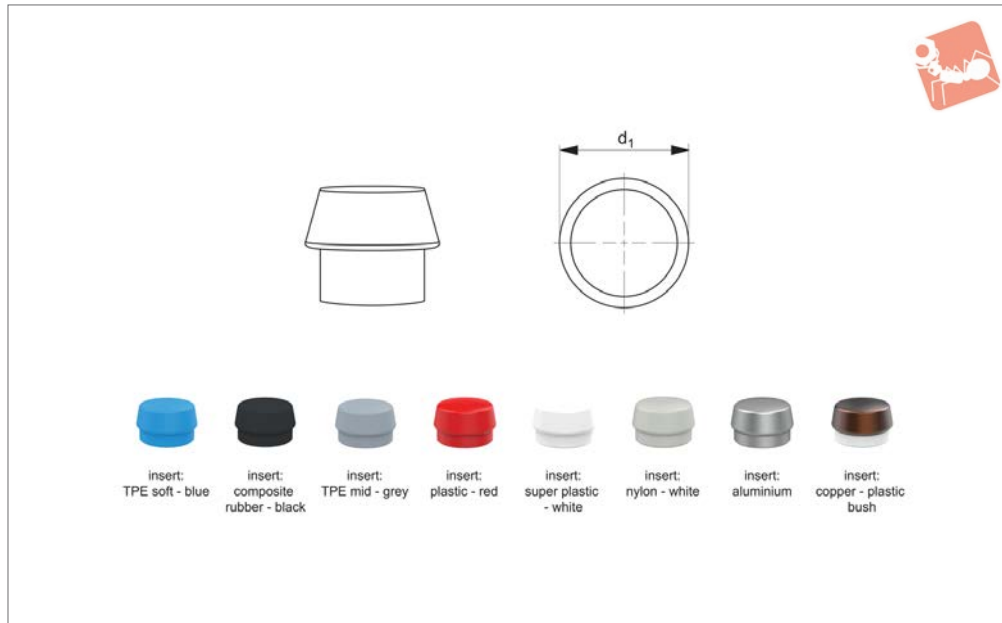


Inserts - for Simplex Mallets

for no. 98001, 98103 & 98101



Mallets & Hammers



98004

MALLETS & HAMMERS

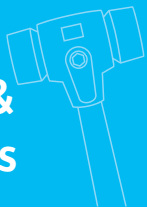
Important Notes

Aluminium inserts, part nos. 98004.W0733-W0788 not for use in light alloy

housings part no. 98022.
Copper inserts part no. 98004.W0833 and W0844 only for use in reinforced housing

part no. 98002.

Order No.	For mallet head dia. d_1	Insert type
98004.W0133	30	TPE Soft - Blue
98004.W0144	40	TPE Soft - Blue
98004.W0155	50	TPE Soft - Blue
98004.W0166	60	TPE Soft - Blue
98004.W0233	30	Composite Rubber - Black
98004.W0244	40	Composite Rubber - Black
98004.W0255	50	Composite Rubber - Black
98004.W0266	60	Composite Rubber - Black
98004.W0288	80	Composite Rubber - Black
98004.W0333	30	TPE Mid - Grey
98004.W0344	40	TPE Mid - Grey
98004.W0355	50	TPE Mid - Grey
98004.W0366	60	TPE Mid - Grey
98004.W0433	30	Plastic - Red
98004.W0444	40	Plastic - Red
98004.W0455	50	Plastic - Red
98004.W0466	60	Plastic - Red
98004.W0533	30	Superplastic - White
98004.W0544	40	Superplastic - White
98004.W0555	50	Superplastic - White
98004.W0566	60	Superplastic - White
98004.W0588	80	Superplastic - White
98004.W0600	100	Superplastic - White
98004.W0611	125	Superplastic - White
98004.W0622	140	Superplastic - White
98004.W0633	30	Nylon - White
98004.W0644	40	Nylon - White
98004.W0655	50	Nylon - White
98004.W0666	60	Nylon - White
98004.W0688	80	Nylon - White
98004.W0733	30	Aluminium
98004.W0744	40	Aluminium
98004.W0755	50	Aluminium
98004.W0766	60	Aluminium
98004.W0788	80	Aluminium



Order No.	For mallet head dia. d_1	Insert type
98004.W0833	30	Copper - With Plastic Bush
98004.W0844	40	Copper - With Plastic Bush



Application Selection Chart

Application selection chart

TPE-soft	Com-posite rubber	TPE-mid	Plastic	Super plastic	Nylon	Alu	Copper	98301 wood	98301 steel	98301 fibre	98310	98321	98401	98330
Soft	Med	Med	Hard	Med	Hard	Hard	Hard							
Range of inserts for Simplex mallets 98001 to 98224								Range of mallet handle types						

Construction applications

	TPE-soft	Com-posite rubber	TPE-mid	Plastic	Super plastic	Nylon	Alu	Copper	98301 wood	98301 steel	98301 fibre	98310	98321	98401	98330
Paving		•	•		•										
Floor tiling	•		•												
Curbstone setting / Masonry work		•			•										
Concrete form set-up		•		•											
Scaffold construction		•		•	•	•									
Tent and hall construction					•	•			•						
Gardening and landscaping		•			•										
Home construction		•	•												

Metal-working industry applications

	TPE-soft	Com-posite rubber	TPE-mid	Plastic	Super plastic	Nylon	Alu	Copper	98301 wood	98301 steel	98301 fibre	98310	98321	98401	98330
Automotive assembly and repair work				•	•	•	•	•	•	•	•	•	•	•	•
Positioning of workpieces in a vice									•	•	•	•	•		
Straightening work							•		•	•	•	•			
Joining of workpieces						•			•	•	•	•		•	•
Repair and maintenance work				•				•	•	•	•	•		•	•
Car body work				•	•		•		•	•	•	•	•		•
Sheet metal working				•	•	•			•	•	•	•	•		•
Dent removal	•	•		•	•	•						•	•		•
Housing assembly					•	•			•	•	•		•	•	•
Mould construction						•	•								•
Assembly of sharp-edged workpieces					•	•			•	•	•				•

Wood-working applications

	TPE-soft	Com-posite rubber	TPE-mid	Plastic	Super plastic	Nylon	Alu	Copper	98301 wood	98301 steel	98301 fibre	98310	98321	98401	98330
Furniture assembly	•		•										•		•
Window and door construction	•		•										•		•
Prefabricated house construction		•													
Joiner's work	•		•										•		•
Carpenter's work		•													
Floor parqueting / laminating													•		

Agriculture and forestry applications

	TPE-soft	Com-posite rubber	TPE-mid	Plastic	Super plastic	Nylon	Alu	Copper	98301 wood	98301 steel	98301 fibre	98310	98321	98401	98330
Fence construction		•							•						
Wood splitting with wedge					•				•						
Maintenance and repair work on agricultural machinery						•			•						•