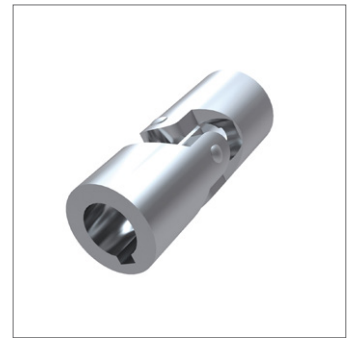
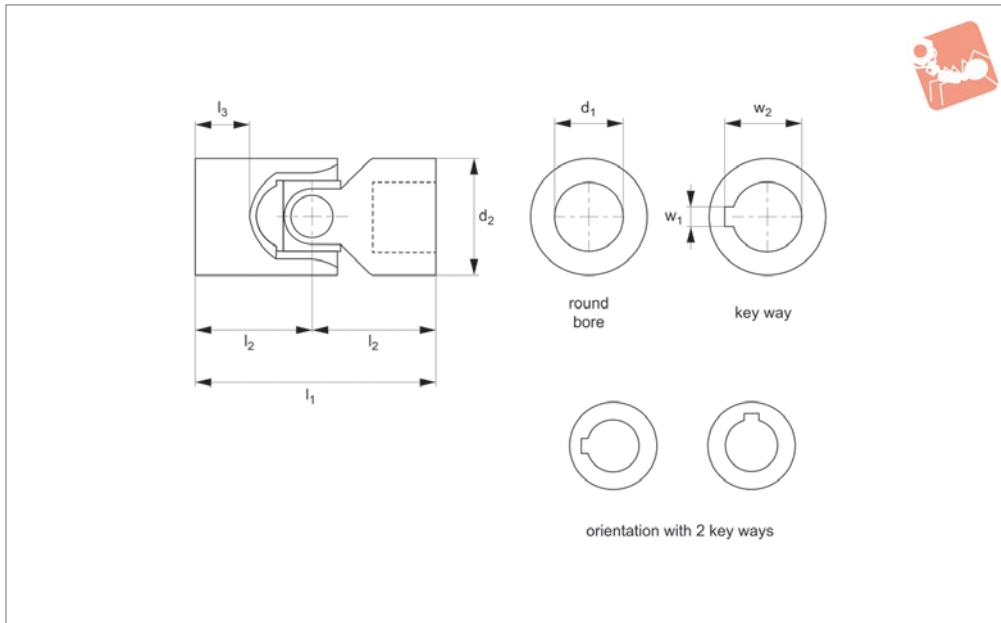




Single Universal Joint

Steel

Universal Joints



65170

UNIVERSAL JOINTS

Material

Steel (9SMnPb28k, no. 10718).
Bearing type: plain bearing.

Technical Notes

To DIN 808/7551.
Maximum bending angle 45° per joint,

Max. drive speed of 1000 rpm.

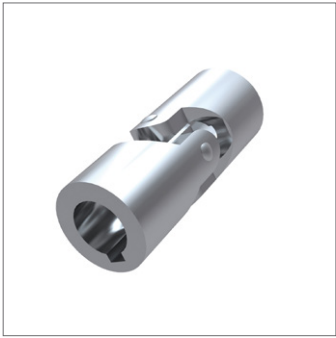
Tips

Single universal joints are used where shafts are off-set towards each other.
Product variations available on request, for square bores change the suffix to SQ for

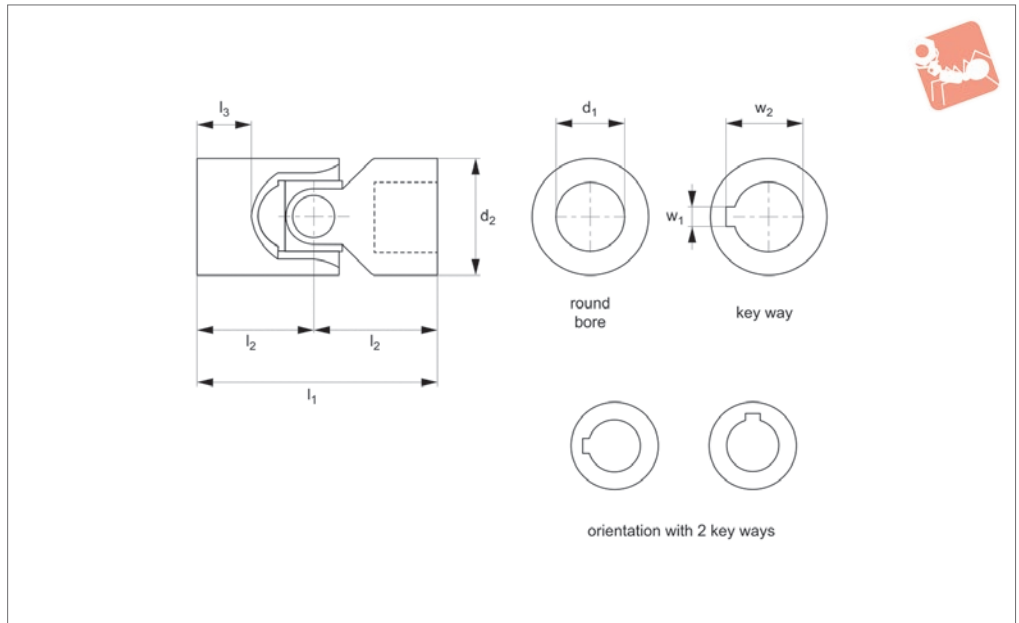
square bores or HX for hex bores.
For stainless steel see 65186

For needle roller bearings see part number

Order No.	Bore dia.	d ₁ tol. H7	d ₂	l ₁	l ₂	l ₃	w ₁ tol. JS9	w ₂	Weight g
65170.W0010	Round bore	10	16	52	26	15	-	-	50
65170.W0012	Round Bore	12	22	62	31	18	-	-	120
65170.W0016	Round Bore	16	25	74	37	21	-	-	200
65170.W0020	Round Bore	20	32	86	43	24	-	-	350
65170.W0025	Round Bore	25	42	108	54	31	-	-	800
65170.W0030	Round Bore	30	50	132	66	38	-	-	1200
65170.W0040	Round Bore	40	70	166	83	47	-	-	2900
65170.W0210	With keyway	10	16	52	26	15	3	11.4	50
65170.W0212	With keyway	12	22	62	31	18	4	13.8	120
65170.W0216	With keyway	16	25	74	37	21	5	18.3	200
65170.W0220	With keyway	20	32	86	43	24	6	22.8	350
65170.W0225	With keyway	25	42	108	54	31	8	28.3	800
65170.W0230	With keyway	30	50	132	66	38	8	33.3	1200
65170.W0240	With keyway	40	70	166	83	47	12	43.3	2900



65172



Material

Steel (9SMnPb28k, no. 10718).
Bearing type: plain bearing.

Technical Notes

To DIN 808.

Maximum bending angle 45° per joint.
Max. drive speed of 1000 rpm.

Tips

Single universal joints are used where shafts are off-set towards each other.

Product variations available on request, for square bores change the suffix to SQ for square bores or HX for hex bores.
For stainless steel see 65186.

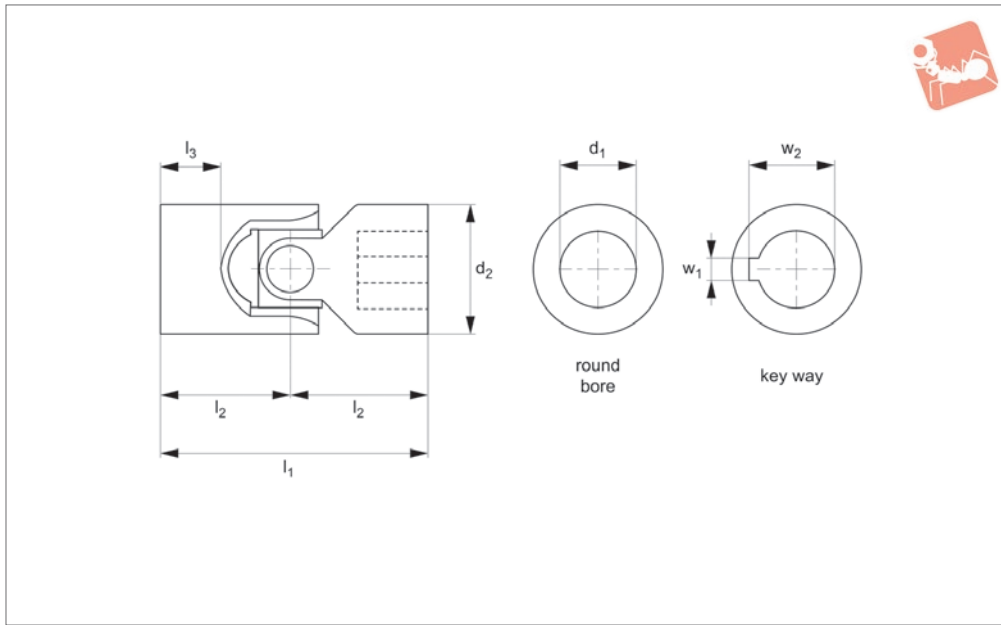
Order No.	Bore dia.	d_1 tol. H7	d_2	l_1	l_2	l_3	w_1 tol. JS9	w_2	Weight g
65172.W0006	Round bore	6	16	34	17	8	-	-	50
65172.W0008	Round bore	8	16	40	20	11	-	-	50
65172.W0010	Round bore	10	22	48	24	12	-	-	100
65172.W0012	Round bore	12	25	56	28	13	-	-	160
65172.W0014	Round bore	14	28	60	30	14	-	-	200
65172.W0016	Round bore	16	32	68	34	16	-	-	300
65172.W0018	Round bore	18	36	74	37	17	-	-	450
65172.W0020	Round bore	20	42	82	41	18	-	-	600
65172.W0022	Round bore	22	45	95	47.5	22	-	-	950
65172.W0025	Round bore	25	50	108	54	26	-	-	1200
65172.W0030	Round bore	30	58	122	61	29	-	-	1850
65172.W0032	Round bore	32	58	130	65	33	-	-	2000
65172.W0035	Round bore	35	70	140	70	35	-	-	3150
65172.W0040	Round bore	40	80	160	80	39	-	-	4600
65172.W0050	Round bore	50	95	190	95	46	-	-	7600
65172.W0206	With Keyway	6	16	34	17	8	2	7.0	50
65172.W0208	With Keyway	8	16	40	20	11	2	9.0	50
65172.W0210	With Keyway	10	22	48	24	12	3	11.4	100
65172.W0212	With Keyway	12	25	56	28	13	4	13.8	160
65172.W0214	With Keyway	14	28	60	30	14	5	16.3	200
65172.W0216	With Keyway	16	32	68	34	16	5	18.3	300
65172.W0218	With Keyway	18	36	74	37	17	6	20.8	450
65172.W0220	With Keyway	20	42	82	41	18	6	22.8	600
65172.W0222	With Keyway	22	45	95	47.5	22	6	24.8	950
65172.W0225	With Keyway	25	50	108	54	26	8	28.3	1200
65172.W0230	With Keyway	30	58	122	61	29	8	33.3	1850
65172.W0232	With Keyway	32	58	130	65	33	10	35.3	2000
65172.W0235	With Keyway	35	70	140	70	35	10	38.3	3150
65172.W0240	With Keyway	40	80	160	80	39	12	43.3	4600
65172.W0250	With Keyway	50	95	190	95	46	14	53.8	7600



Stainless Single Universal Joint

Stainless

Universal Joints



65186

UNIVERSAL JOINTS

Material

Stainless steel (AISI 304)

Technical Notes

To DIN 808, maximum bending angle 45° per joint.

Tips

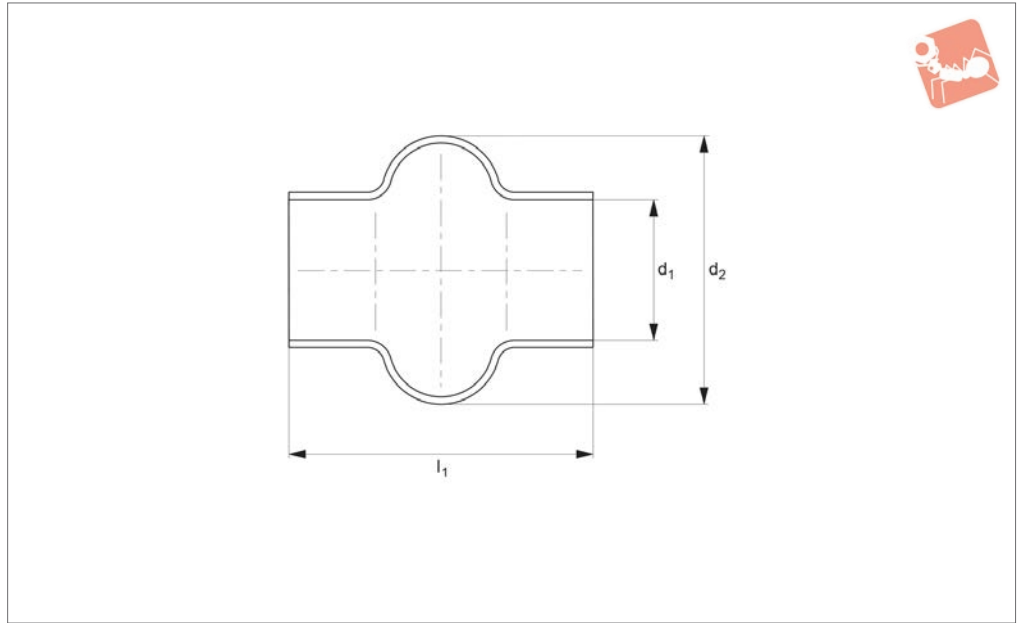
Single universal joints are used where shafts are off-set towards each other.

Product variations available on request, for square bores change the suffix to SQ for square bores or HX for hex bores.

Order No.	Bore dia.	d_1 tol. H7	d_2	l_1	l_2	l_3	w_1 tol. JS9	w_2	Weight g
65186.W0006	Round bore	6	16	34	17	8	-	-	50
65186.W0008	Round Bore	8	16	40	20	11	-	-	50
65186.W0010	Round Bore	10	22	48	24	12	-	-	100
65186.W0012	Round Bore	12	25	56	28	13	-	-	160
65186.W0016	Round Bore	16	32	68	34	16	-	-	300
65186.W0020	Round Bore	20	42	82	41	18	-	-	600
65186.W0025	Round Bore	25	50	108	54	26	-	-	1200
65186.W0030	Round Bore	30	58	122	61	29	-	-	1850



65280



UNIVERSAL JOINTS

Material

Rubber.

Tips

Bellows give universal joints full protec-

tion against ingress of dirt.

They can be filled with grease which gives long term lubrication for friction bearings. Bellows should be secured at each end with

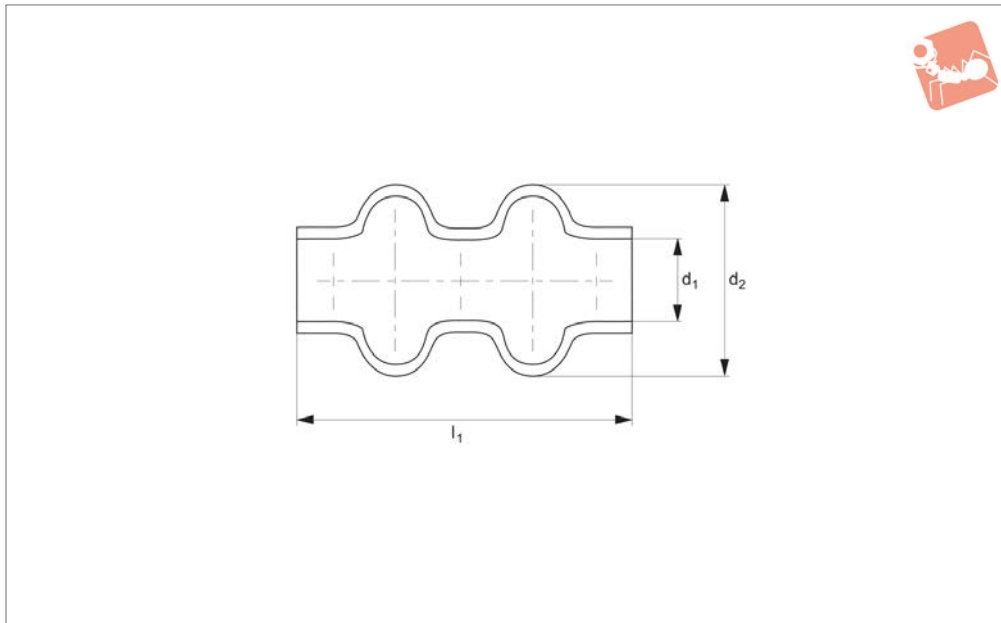
two cable ties (not supplied).

Order No.	To suit joint of o.d	d ₁	d ₂	l ₁
65280.W0016	16	15.0	28	34
65280.W0018	18	16.5	32	40
65280.W0022	22	20.5	40	45
65280.W0025	25/26	24.5	48	50
65280.W0028	28/29	27.5	52	56
65280.W0032	32	30.5	56	65
65280.W0036	36/37	35.5	66	72
65280.W0042	42	40.0	75	82
65280.W0045	45/47	45.0	84	95
65280.W0050	50/52	50.0	92	108
65280.W0058	58	56.0	100	122



Bellows for double universal joints

Universal Joints



65282

UNIVERSAL JOINTS

Material

Black elastomer plastic (smooth PVC)

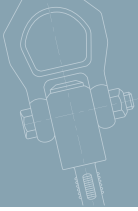
tion against ingress of dirt.

They can be filled with grease which gives long term lubrication for friction bearings. Bellows should be secured at each end with two cable ties (not supplied).

Tips

Bellows give universal joints full protec-

Order No.	To suit joint of o.d	d ₁	d ₂	l ₁
65282.W0016	16	16	35	55
65282.W0022	22	20	36	65
65282.W0025	25	24	44	70
65282.W0028	28	28	51	80
65282.W0032	32	32	62	90
65282.W0050	50	50	90	155



Parts overview

UNIVERSAL JOINTS

Single Universal Joints

Available with plain bearings or needle roller bearings. Plain bore and keyed bores stocked as standard, hex or square shaped bores on request. Bore diameters 6mm up to 50mm.



Double Universal Joints

Available with plain bearings or needle roller bearings. Plain bore and keyed bores stocked as standard, hex or square shaped bores on request. Bore diameters 6mm up to 50mm.



Stainless Steel Universal Joints

Single and double universal joints with plain bearings and plain bores. Keyed, hex or square shaped bores available on request. Bore diameters 6mm up to 30mm.



Quick Release Universal Joints

Quick change mechanism one end of the joint to allow rapid connection and release of the shaft, ideal when time is critical. Bore diameters 8mm up to 30mm.



Universal Joint Bellows

Available for both single and double universal joints, bellows are used to cover and protect the joints. Available to protect joints up to 58mm outside diameter.



Telescopic Universal Joints

Two universal joints connected by a sliding splined shaft with the ability to extend, allowing adjustments in length during installation. Bore diameters 10mm up to 30mm.



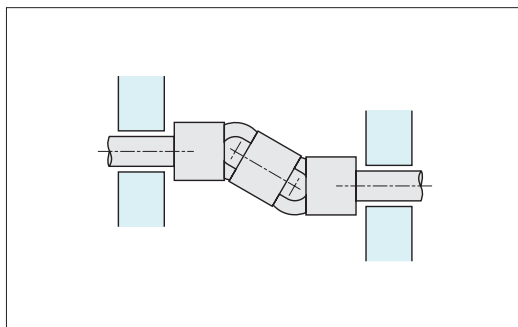
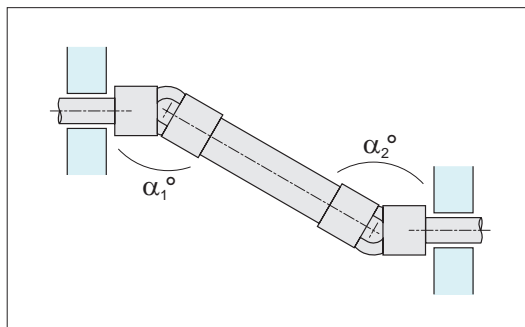
When one single joint is coupled with two shafts (of which the driving one is rotating at a constant speed) forming an angle, a periodic variation of the driven shaft is caused with exactly four fluctuations per revolution.

The difference between the maximum and the minimum speed of the driven shaft depends on the angle formed by the two shafts. The difference grows with the an increase of the angle a° . To have a homokinetic transmission, either two opposite single joints (ensuing that that the two central yokes lie on the same plane and the angles are equal) or a double joint need to be fitted. The irregularity caused by the former articulation is cancelled by the latter. The overall length resulting from the coupling of the two single joints can be reduced by using a double joint. In other words, the double joint is to be considered as the shortest homokinetic transmission.

For low speed applications (Max. 1000 rpm), joints with plain bearings (rubbing bearings) are suggested. They are able to support shock loads, motion reversals, irregular runnings and relatively high torques. The working angles must be be restricted when using at speeds between 500 - 1000 rpm. Please consult our technical department if you have such an application.

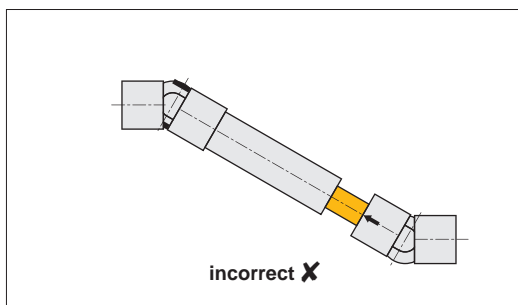
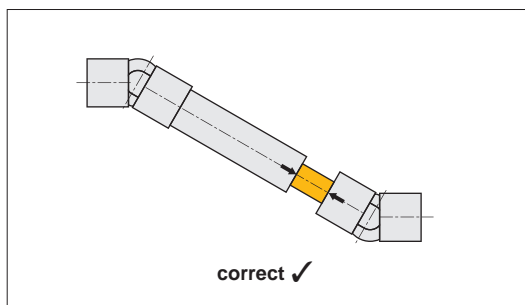
For high rotation speeds, relatively low torques or wide angles, joints with needle roller bearings are preferred. They can reach 4000 RPM dependent on the angle.

Dynamic basic load ratings of plain bearing rod ends



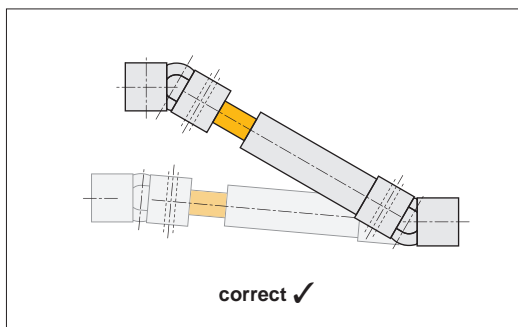
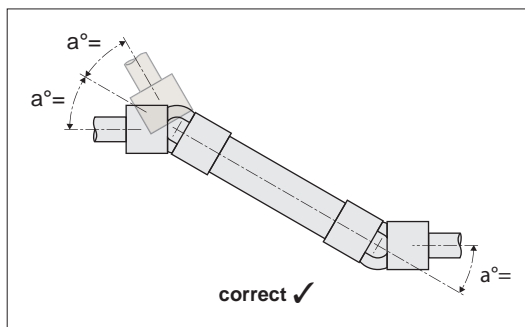
To obtain a uniform rotary motion always use either two opposite single joints or one double joints. $\alpha_1 = \alpha_2$.

The pillow block supports should be positioned as close as possible to the joints.

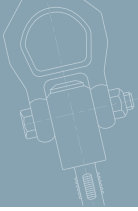


When using two opposite single joints ensure the alignment of the inside yokes.

In extensible transmissions make sure that the arrows are perfectly aligned.



It is essential that the two bending angles a° are equal.



How to read diagrams

The joint capacity to transmit a regular torque at a constant load with no shocks, for a long period, mainly depends on the number of revolutions per minute and the inclination angle a° of the two axes. The diagrams on the following pages are based on this. Each curve corresponds to the joint size (outside diameter "D") and represents the torque that the joint can transmit depending on speed and working angle a° .

The diagrams can be directly read if angle (a°) is 10° . For wider angles, torques are reduced, therefore these are to be corrected using the correction vales (F) relating to the angle shown in the table.

Important Note: Diagrams' values are merely indicative and refer to the single joints only. When choosing a double joint, you have to consider that they can transmit a torque about 10% lower than the same sized single joints. Each application has its own particular motion characteristics, such as: shock loads, motion reversals, connected masses, kind of starting, presence of elastic joints, stops and starts, etc., that have to be considered when choosing the joint.

Working angle a°	Correction value F
5°	1,25
10°	1,00
15°	0,80
20°	0,65
25°	0,55
30°	0,45
35°	0,38
40°	0,30
45°	0,25

Example

Known: Power = 0,65 kW
RPM = 230

With working angle a 10° , $F = 1$, we get point **P**. Torque = 27 Nm corresponding to joint size "D" = 25/26mm = Types **65170.W0016** and **65172.W0012**

With working angle a 30° , $F = 0,45$ (kW 0,65: 0,45 = 1,44 kW) we get point **P1** Torque = 60 Nm corresponding to joint size "D" = 32mm = Types **65170.W0020** and **65172.W0016**

Consider that:

$$\text{Torque in Nm} = 9550 \times \frac{\text{Power (kW)}}{\text{RPM}}$$

$$\text{Torque in Nm} = 7020 \times \frac{\text{Power (HP)}}{\text{RPM}}$$

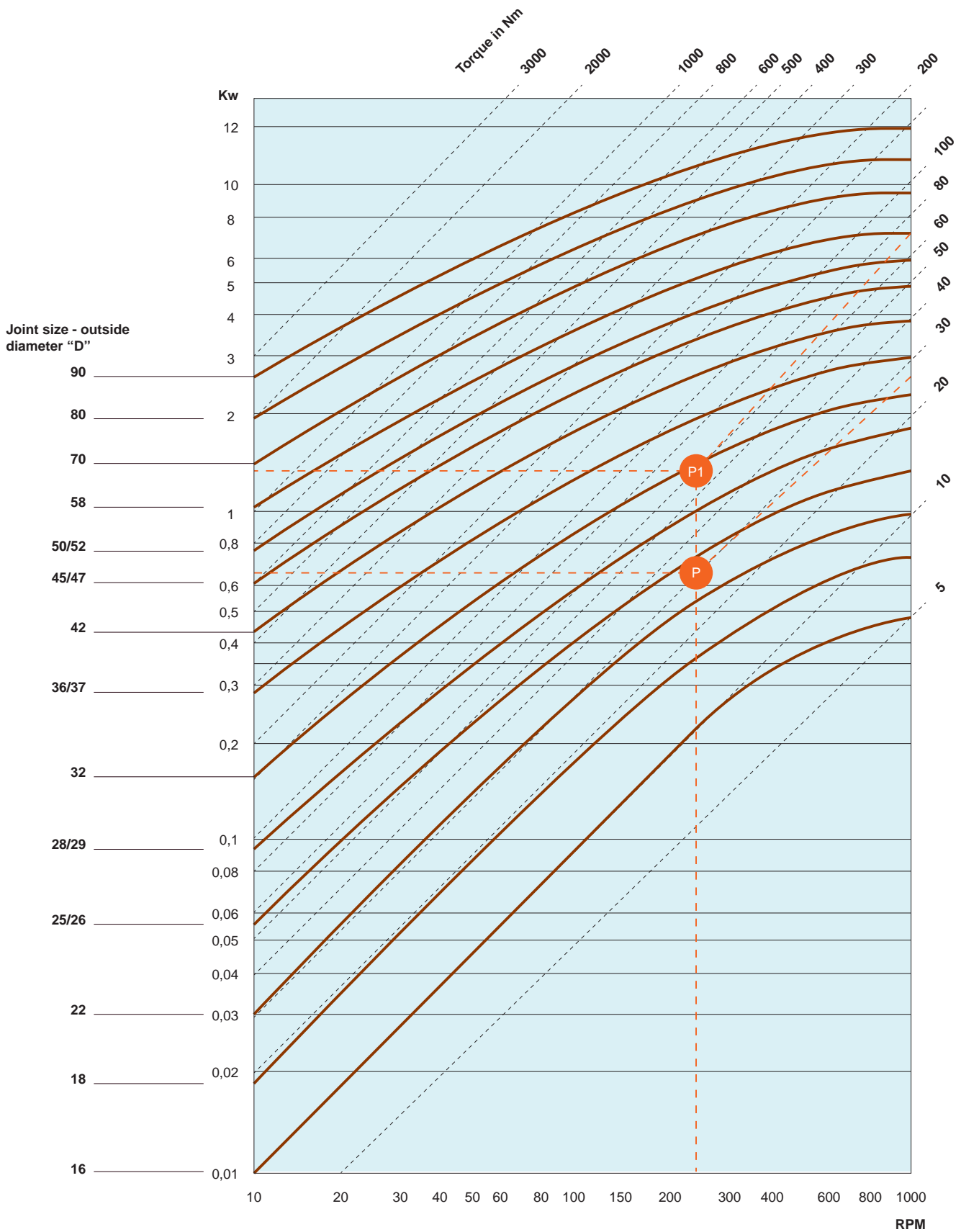
- 1 kW = 1,35 HP
- 1 HP = 0,736 kW
- 1 Kgm = 9,81 Nm
- 1 Nm = 0,102 Kgm



Torque Ratings for Plain Bearing Universal Joints



Materials Handling



UNIVERSAL JOINTS

ov-W65142-AR3680-T-W65282-A-T-d-rmh-Updated -31-10-2022