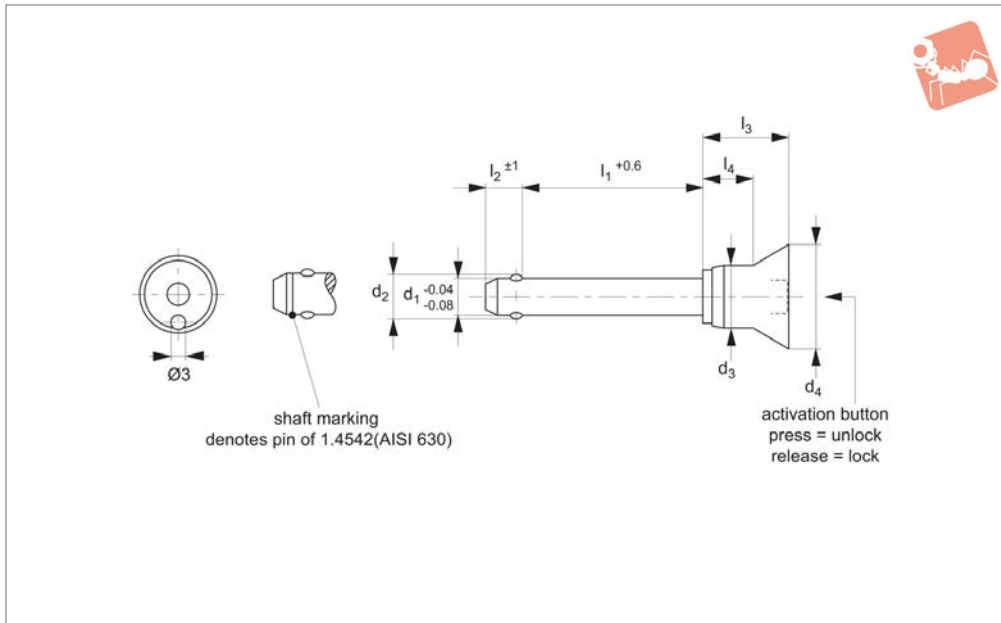




Ball Lock Pins - Single Acting - Safety

self-locking - stainless 1.4305

Ball Lock Pins & Quick Release



33226.1

BALL LOCK PINS & QUICK RELEASE PINS

Material

Pin: Stainless steel 1.4305 (AISI 303).
Ball: stainless steel 1.3541
Spring: stainless steel.
Handle: stainless steel.

Technical Notes

Pressing = unlocking.

Releasing = locking.

Handle shape protects against accidental actuation of ball lock pin.
Temperature resistant up to 250°C
For quick fastening and locking of frequently repeated connections.

Tips

For lanyards & retaining cables see part no. 33250. Easy install locating bushes available see part no. 33248.

Important Notes

*Shearing resistance similar to DIN 50141.

Order No.	Material	d ₁	l ₁	d ₂	d ₃	d ₄	l ₂	l ₃	l ₄	Location hole dia.	Shearing resistance, double kN	Weight g
33226.W1012	Stainless 1.4305	5	10	5.5	10.3	20	6.0	21.0	11.6	5	14	18
33226.W1013	Stainless 1.4305	5	15	5.5	10.3	20	6.0	21.0	11.6	5	14	19
33226.W1014	Stainless 1.4305	5	20	5.5	10.3	20	6.0	21.0	11.6	5	14	20
33226.W1015	Stainless 1.4305	5	25	5.5	10.3	20	6.0	21.0	11.6	5	14	21
33226.W1016	Stainless 1.4305	5	30	5.5	10.3	20	6.0	21.0	11.6	5	14	21
33226.W1022	Stainless 1.4305	6	10	7.0	10.3	20	7.0	21.0	11.6	6	21	19
33226.W1023	Stainless 1.4305	6	15	7.0	10.3	20	7.0	21.0	11.6	6	21	20
33226.W1024	Stainless 1.4305	6	20	7.0	10.3	20	7.0	21.0	11.6	6	21	22
33226.W1025	Stainless 1.4305	6	25	7.0	10.3	20	7.0	21.0	11.6	6	21	23
33226.W1026	Stainless 1.4305	6	30	7.0	10.3	20	7.0	21.0	11.6	6	21	24
33226.W1027	Stainless 1.4305	6	35	7.0	10.3	20	7.0	21.0	11.6	6	21	25
33226.W1028	Stainless 1.4305	6	40	7.0	10.3	20	7.0	21.0	11.6	6	21	26
33226.W1029	Stainless 1.4305	6	45	7.0	10.3	20	7.0	21.0	11.6	6	21	27
33226.W1030	Stainless 1.4305	6	50	7.0	10.3	20	7.0	21.0	11.6	6	21	28
33226.W1034	Stainless 1.4305	8	20	9.5	13.3	24	8.2	27.5	17.4	8	38	40
33226.W1035	Stainless 1.4305	8	25	9.5	13.3	24	8.2	27.5	17.4	8	38	41
33226.W1036	Stainless 1.4305	8	30	9.5	13.3	24	8.2	27.5	17.4	8	38	43
33226.W1037	Stainless 1.4305	8	35	9.5	13.3	24	8.2	27.5	17.4	8	38	45
33226.W1038	Stainless 1.4305	8	40	9.5	13.3	24	8.2	27.5	17.4	8	38	47
33226.W1039	Stainless 1.4305	8	45	9.5	13.3	24	8.2	27.5	17.4	8	38	49
33226.W1040	Stainless 1.4305	8	50	9.5	13.3	24	8.2	27.5	17.4	8	38	51
33226.W1044	Stainless 1.4305	10	20	12.0	13.3	24	9.6	27.5	17.4	10	60	46
33226.W1045	Stainless 1.4305	10	25	12.0	13.3	24	9.6	27.5	17.4	10	60	49
33226.W1046	Stainless 1.4305	10	30	12.0	13.3	24	9.6	27.5	17.4	10	60	52
33226.W1047	Stainless 1.4305	10	35	12.0	13.3	24	9.6	27.5	17.4	10	60	5
33226.W1048	Stainless 1.4305	10	40	12.0	13.3	24	9.6	27.5	17.4	10	60	58
33226.W1049	Stainless 1.4305	10	45	12.0	13.3	24	9.6	27.5	17.4	10	60	61
33226.W1050	Stainless 1.4305	10	50	12.0	13.3	24	9.6	27.5	17.4	10	60	64
33226.W1052	Stainless 1.4305	10	60	12.0	13.3	24	9.6	27.5	17.4	10	60	70
33226.W1065	Stainless 1.4305	12	25	14.5	16.5	28	10.6	33.5	23.1	12	87	77



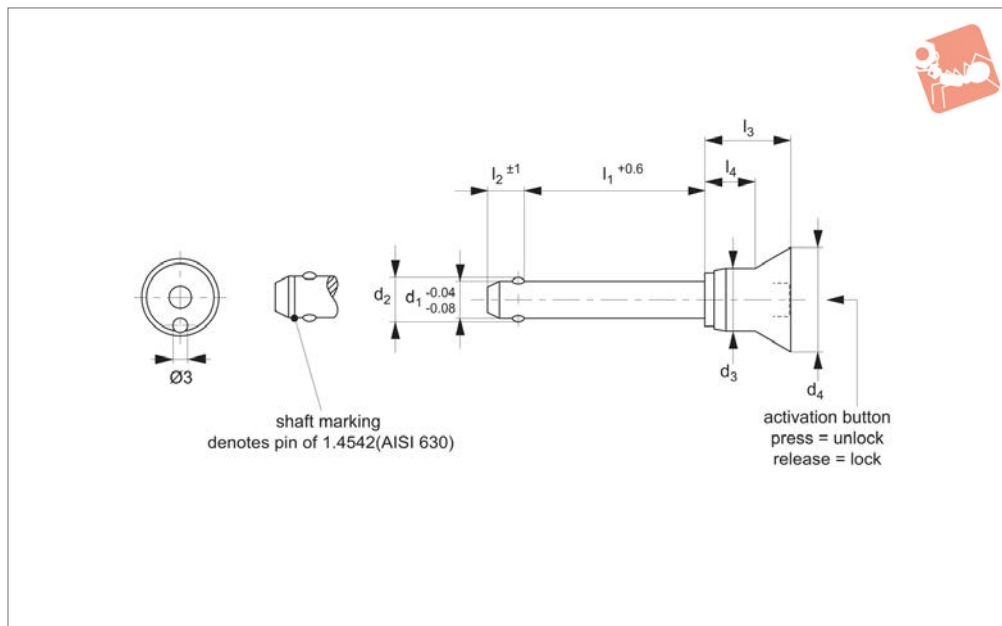
Order No.	Material	d ₁	l ₁	d ₂	d ₃	d ₄	l ₂	l ₃	l ₄	Location hole dia.	Shearing resistance, double		Weight
											kN	g	
33226.W1066	Stainless 1.4305	12	30	14.5	16.5	28	10.6	33.5	23.1	12	87	82	
33226.W1067	Stainless 1.4305	12	35	14.5	16.5	28	10.6	33.5	23.1	12	87	86	
33226.W1068	Stainless 1.4305	12	40	14.5	16.5	28	10.6	33.5	23.1	12	87	90	
33226.W1069	Stainless 1.4305	12	45	14.5	16.5	28	10.6	33.5	23.1	12	87	94	
33226.W1070	Stainless 1.4305	12	50	14.5	16.5	28	10.6	33.5	23.1	12	87	99	
33226.W1072	Stainless 1.4305	12	60	14.5	16.5	28	10.6	33.5	23.1	12	87	107	
33226.W1074	Stainless 1.4305	12	70	14.5	16.5	28	10.6	33.5	23.1	12	87	116	
33226.W1076	Stainless 1.4305	12	80	14.5	16.5	28	10.6	33.5	23.1	12	87	124	



Ball Lock Pins - Single Acting - Safety

self-locking - stainless 1.4542

Ball Lock Pins & Quick Release



33226.2

BALL LOCK PINS & QUICK RELEASE PINS

Material

Pin: Stainless steel 1.4542 (AISI 630), precipitation hardened, blast finish. Offering extreme load capacity. (Marked at end of shaft to denote 1.4542 material).
Ball: stainless steel 1.3541
Spring: stainless steel.
Handle: stainless steel.

Technical Notes

Pressing = unlocking.

Releasing = locking.

Handle shape protects against accidental actuation of ball lock pin.
Temperature resistant up to 250°C
For quick fastening and locking of frequently repeated connections.

Tips

For lanyards & retaining cables see part no. 33250. Easy install locating bushes

available see part no. 33248.

Important Notes

*Shearing resistance similar to DIN 50141.

Order No.	Material	d ₁	l ₁	d ₂	d ₃	d ₄	l ₂	l ₃	l ₄	Location hole dia.	Shearing resistance, double kN	Weight g
33226.W1512	Stainless 1.4542	5	10	5.5	10.3	20	6.0	21.0	11.6	5	24	18
33226.W1513	Stainless 1.4542	5	15	5.5	10.3	20	6.0	21.0	11.6	5	24	19
33226.W1514	Stainless 1.4542	5	20	5.5	10.3	20	6.0	21.0	11.6	5	24	20
33226.W1515	Stainless 1.4542	5	25	5.5	10.3	20	6.0	21.0	11.6	5	24	21
33226.W1516	Stainless 1.4542	5	30	5.5	10.3	20	6.0	21.0	11.6	5	24	21
33226.W1522	Stainless 1.4542	6	10	7.0	10.3	20	7.0	21.0	11.6	6	35	19
33226.W1523	Stainless 1.4542	6	15	7.0	10.3	20	7.0	21.0	11.6	6	35	20
33226.W1524	Stainless 1.4542	6	20	7.0	10.3	20	7.0	21.0	11.6	6	35	22
33226.W1525	Stainless 1.4542	6	25	7.0	10.3	20	7.0	21.0	11.6	6	35	23
33226.W1526	Stainless 1.4542	6	30	7.0	10.3	20	7.0	21.0	11.6	6	35	24
33226.W1527	Stainless 1.4542	6	35	7.0	10.3	20	7.0	21.0	11.6	6	35	25
33226.W1528	Stainless 1.4542	6	40	7.0	10.3	20	7.0	21.0	11.6	6	35	26
33226.W1529	Stainless 1.4542	6	45	7.0	10.3	20	7.0	21.0	11.6	6	35	27
33226.W1530	Stainless 1.4542	6	50	7.0	10.3	20	7.0	21.0	11.6	6	35	28
33226.W1534	Stainless 1.4542	8	20	9.5	13.3	24	8.2	27.5	17.4	8	63	40
33226.W1535	Stainless 1.4542	8	25	9.5	13.3	24	8.2	27.5	17.4	8	63	41
33226.W1536	Stainless 1.4542	8	30	9.5	13.3	24	8.2	27.5	17.4	8	63	43
33226.W1537	Stainless 1.4542	8	35	9.5	13.3	24	8.2	27.5	17.4	8	63	45
33226.W1538	Stainless 1.4542	8	40	9.5	13.3	24	8.2	27.5	17.4	8	63	47
33226.W1539	Stainless 1.4542	8	45	9.5	13.3	24	8.2	27.5	17.4	8	63	49
33226.W1540	Stainless 1.4542	8	50	9.5	13.3	24	8.2	27.5	17.4	8	63	51
33226.W1544	Stainless 1.4542	10	20	12.0	13.3	24	9.6	27.5	17.4	10	100	46
33226.W1545	Stainless 1.4542	10	25	12.0	13.3	24	9.6	27.5	17.4	10	100	49
33226.W1546	Stainless 1.4542	10	30	12.0	13.3	24	9.6	27.5	17.4	10	100	52
33226.W1547	Stainless 1.4542	10	35	12.0	13.3	24	9.6	27.5	17.4	10	100	55
33226.W1548	Stainless 1.4542	10	40	12.0	13.3	24	9.6	27.5	17.4	10	100	58

Ball Lock Pins & Quick Release



Ball Lock Pins - Single Acting - Safety self-locking - stainless 1.4542



BALL LOCK PINS & QUICK RELEASE PINS

Order No.	Material	d ₁	l ₁	d ₂	d ₃	d ₄	l ₂	l ₃	l ₄	Location hole dia.	Shearing resistance, double kN	Weight g
33226.W1549	Stainless 1.4542	10	45	12.0	13.3	24	9.6	27.5	17.4	10	100	61
33226.W1550	Stainless 1.4542	10	50	12.0	13.3	24	9.6	27.5	17.4	10	100	64
33226.W1552	Stainless 1.4542	10	60	12.0	13.3	24	9.6	27.5	17.4	10	100	70
33226.W1565	Stainless 1.4542	12	25	14.5	16.5	28	10.6	33.5	23.1	12	144	77
33226.W1566	Stainless 1.4542	12	30	14.5	16.5	28	10.6	33.5	23.1	12	144	82
33226.W1567	Stainless 1.4542	12	35	14.5	16.5	28	10.6	33.5	23.1	12	144	86
33226.W1568	Stainless 1.4542	12	40	14.5	16.5	28	10.6	33.5	23.1	12	144	90
33226.W1569	Stainless 1.4542	12	45	14.5	16.5	28	10.6	33.5	23.1	12	144	94
33226.W1570	Stainless 1.4542	12	50	14.5	16.5	28	10.6	33.5	23.1	12	144	99
33226.W1572	Stainless 1.4542	12	60	14.5	16.5	28	10.6	33.5	23.1	12	144	107
33226.W1574	Stainless 1.4542	12	70	14.5	16.5	28	10.6	33.5	23.1	12	144	116
33226.W1576	Stainless 1.4542	12	80	14.5	16.5	28	10.6	33.5	23.1	12	144	124



Wixroyd Ball Lock Pins

applications

33060 - 33250

Positioning Elements

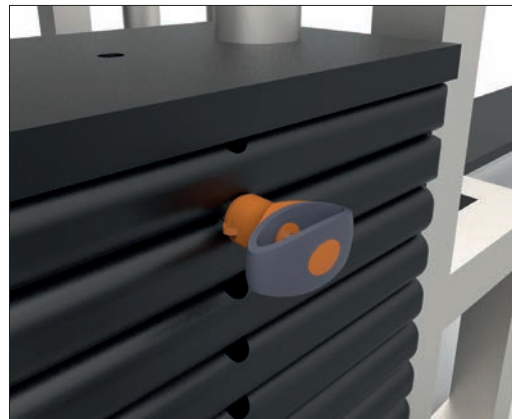
Sound Rigging Systems

Ball lock pins on a sound rigging system. Offering secure fixing with high shear forces and easy fitting for operators at heights.

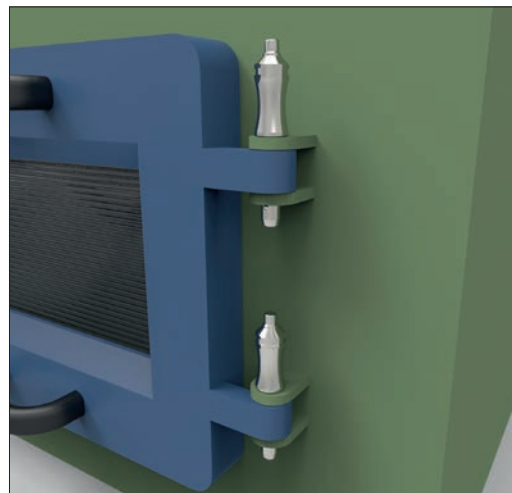
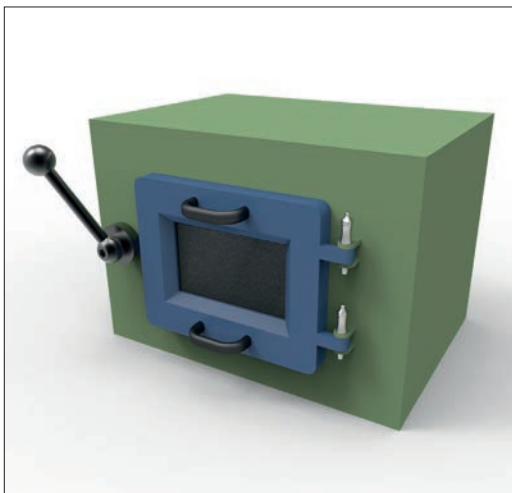
In addition full black powder coating of grip and actuation button eliminates glare from other stage lighting.



Gym Equipment



Scientific and Medical



BALL LOCK PINS & QUICK RELEASE PINS

ov-W33060.BK-A-TOR1706-W33250-A-TLA1066-a-rmh - Updated - 27-10-2022