

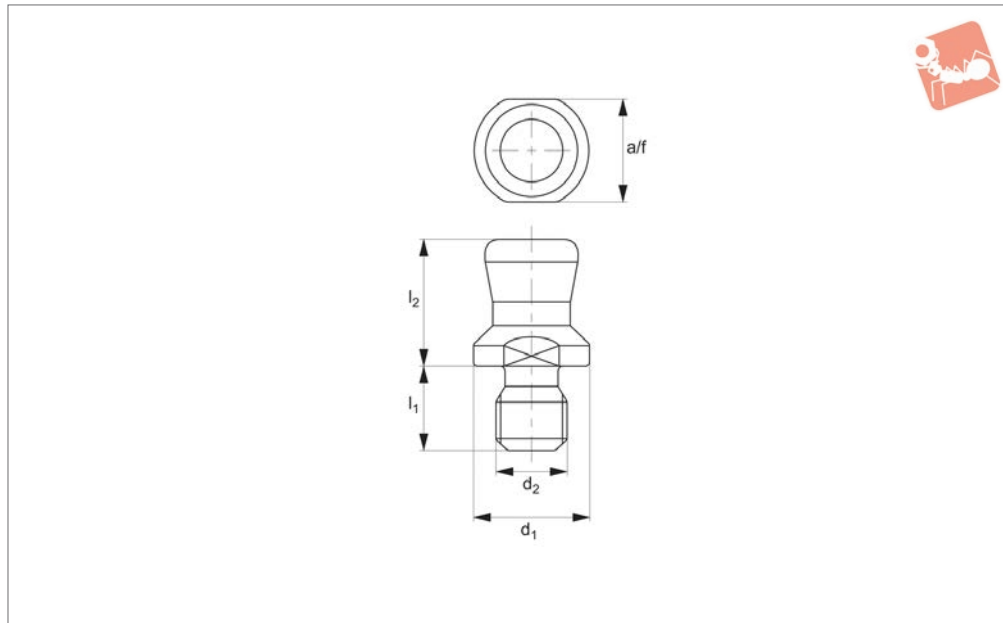


One-Touch Fastener - Ball Clamping

pin - for one touch fasteners 33924 to 33929



One Touch Fasteners



33923

ONE TOUCH FASTENERS

Material

Body: stainless steel, SUS630

Technical Notes

One-touch fasteners are the ideal solution for applications requiring rapid and recurring change over of tooling or set ups. Use in applications as diverse as bottling processes, machine covers, changing of

cogs and drive belts. One-touch fasteners provide a quick, simple and secure change over solution - no time wasted in unfastening screws or other permanent fixings, and no opportunity for lost fixings in your machinery.

Important Notes

Pin 33923 for use in conjunction with one-

touch fasteners, ball clamping; 33924 through 33929. Pins for installation in material to minimum depth 6,0mm or greater.

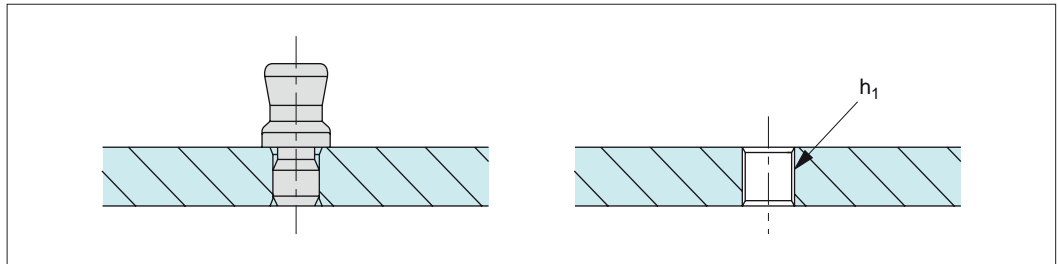
Recess of 0,5mm +0,1 is recommended to ensure full surface contact and achieve maximum strength of pin.

Order No.	d_1 -0.05 -0.10	d_2	l_1	l_2	A/F	Weight g
33923.W0006	6	M 4x0,7	5.8	7.6	5	2
33923.W0008	8	M 5x0,8	5.8	8.7	7	3



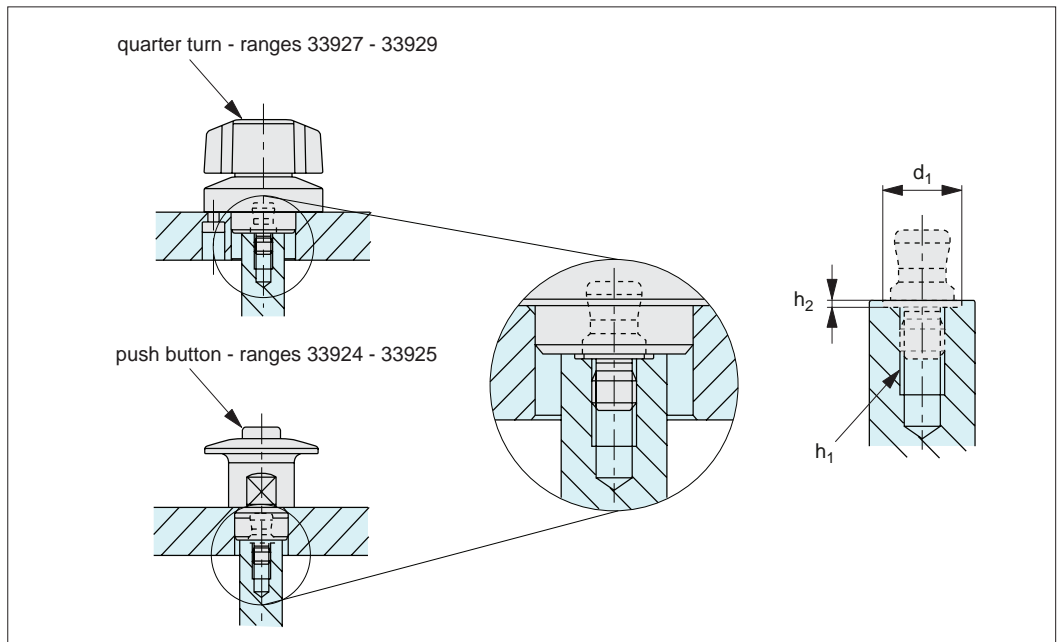
Installation Dimensions

Standard Mount



Recessed Mount

Prepare a tapped hole according to the thread of the pin. Ensure a counter bore is machined to depth h_2 to complete pin installation.



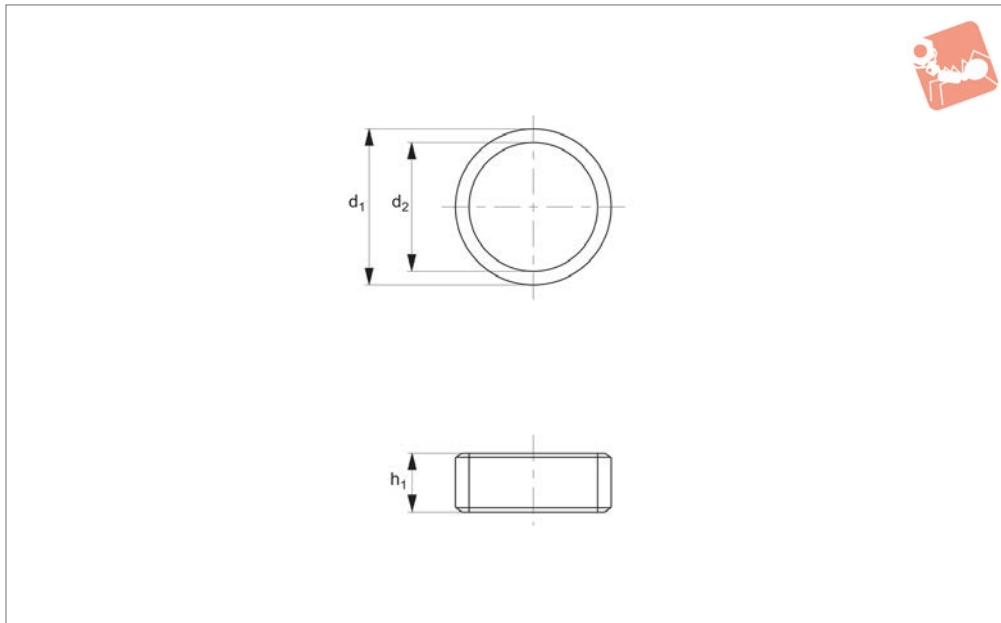
	Mounting type	h_1	h_2 +0,1	d_3
33923.W0006	Standard	M4x0,7	-	-
33923.W0006	Recessed	M4x0,7	0,5	7
33923.W0008	Standard	M5x0,8	-	-
33923.W0008	Recessed	M5x0,8	0,5	9



One-Touch Fastener - Ball Clamping spacer- for one-touch fastener 33924 & 33925



One Touch Fasteners



33926

ONE TOUCH FASTENERS

Material

Stainless steel SUS303

Technical Notes

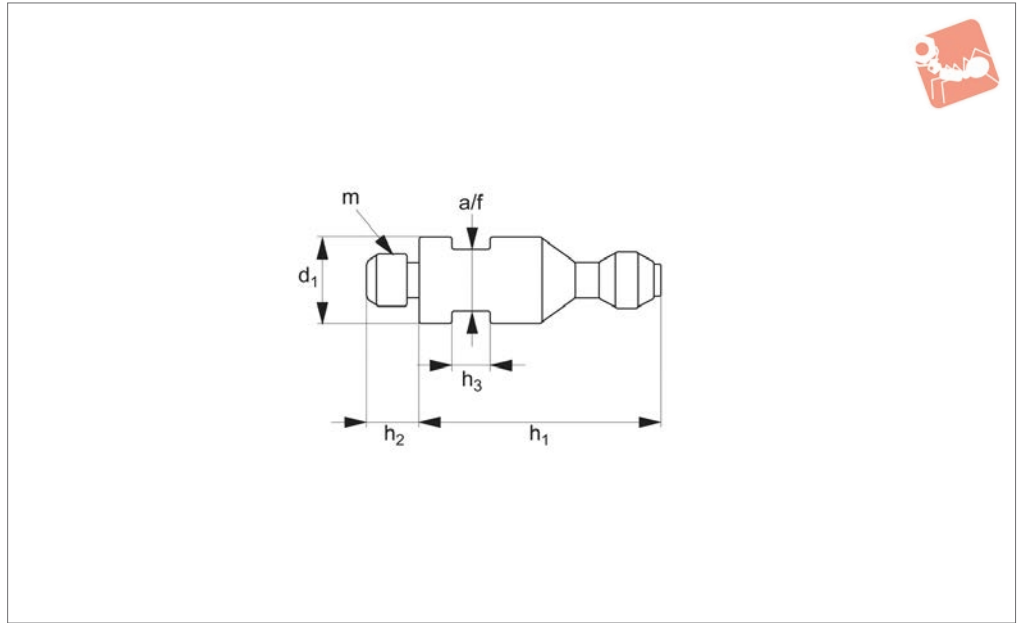
For use with one-touch fasteners 33924

and 33925. Spacer adapts thread length of one-touch fastener to different thread reaches on mounting panels of different thickness.

Order No.	For panel thickness	d_1	d_2 +0.2 +0.01	h_1 +0.05	Weight g
33926.W1604	6	19	16	4	2.5
33926.W1605	5	19	16	5	3.0
33926.W1606	4	19	16	6	3.5
33926.W1607	3	19	16	7	4.0



33930



Material

Body: steel, nickel plated.

Technical Notes

One-touch fasteners are the ideal solution for applications requiring rapid and recurring change over of tooling or set ups. Use in applications as diverse as bottling processes, machine covers, changing of

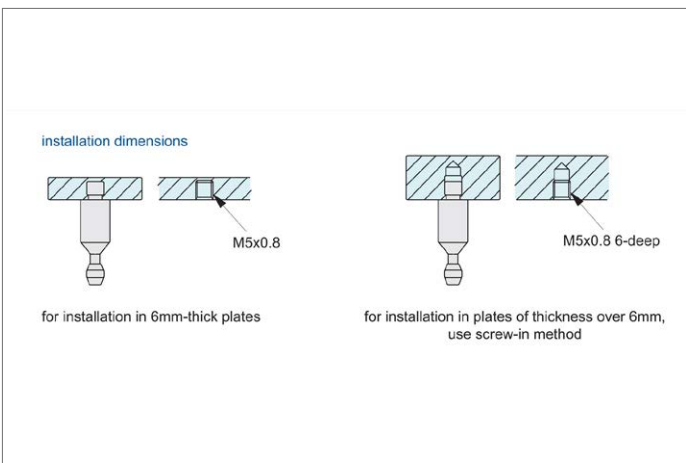
cogs and drive belts. One-touch fasteners provide a quick, simple and secure change over solution - no time waste in unfastening screws or other permanent fixings, and no opportunity for lost fixings in your machinery.

Important Notes

Pin 33930 is for use inconjunction with

one-touch fasteners, ball clamping; 33934 and 33936. Suitable for panels/enclosures of 6 to 20 mm thickness. Requires an M 6 thread, 6mm deep for installation into blind hole. See technical pages for further information.

Order No.	d_1 -0.2 -0.4	h_1	h_2	h_3	m	A/F	Weight g
33930.W0008	Ø8	23	5	4	M 5x0,8	6	7



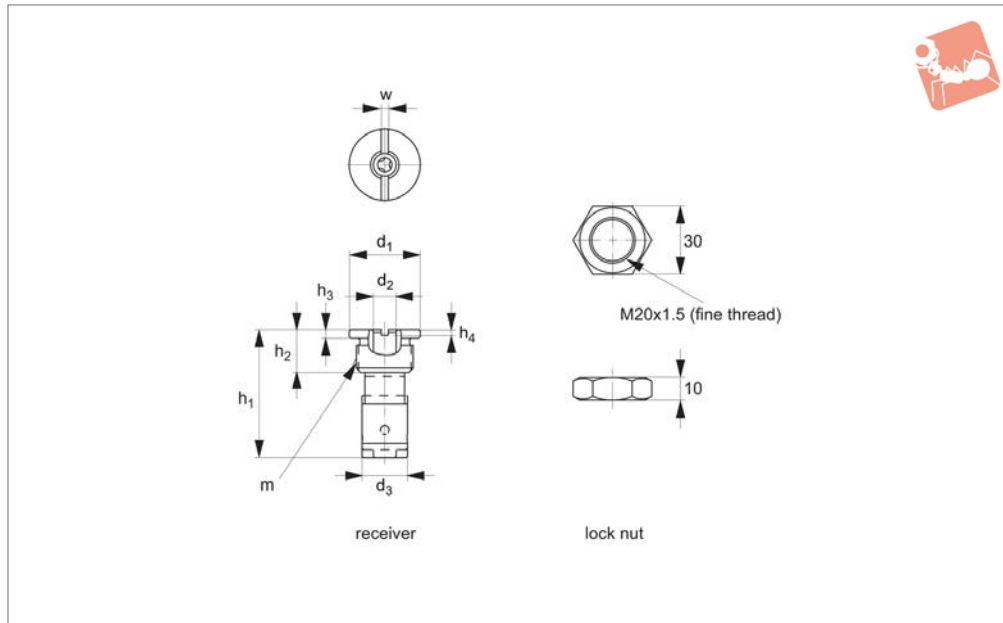


One-Touch Fastener - Ball Clamping

locating bush and receiver - safety release



One Touch Fasteners



33934

ONE TOUCH FASTENERS

Material

Body: steel, nickel plated.
Balls: stainless steel.

Technical Notes

One-touch fasteners are the ideal solution for applications requiring rapid and recurring change over of tooling or set ups. Use in applications as diverse as bottling processes, machine covers, changing of cogs and drive belts. One-touch fasteners provide a quick, simple and secure change

over solution - no time waste in unfastening screws or other permanent fixings, and no opportunity for lost fixings in your machinery.

Temperature resistant to 180°C.

Important Notes

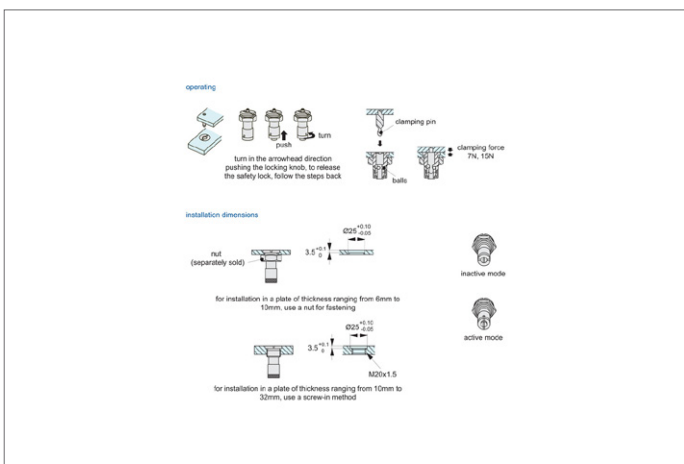
Suitable for panels/enclosures of 6 to 32 mm thickness. Used in conjunction with pin 33930. Offers a safety release feature to prevent accidental release in of pin/assembly.

* Tensile strength stated is for locked position/state of the fastener.

Actuation:

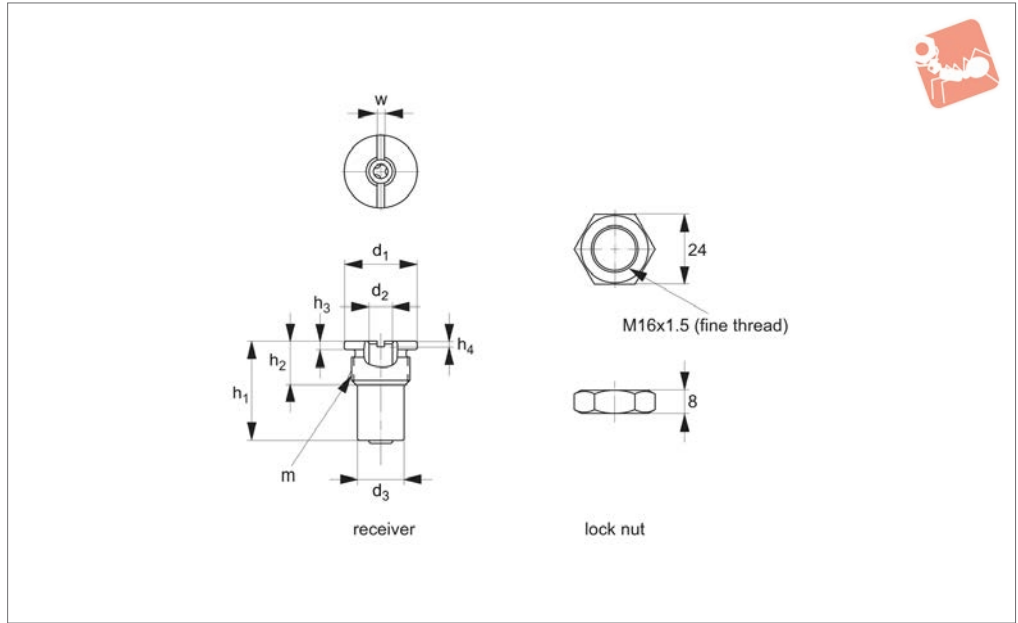
Engage pin into receiver, a positive „click“ is heard, securing balls are engaged. Panels are securely fastened. To release, pull safety release housing on under side of receiver, balls are retracted and panel is released.

Order No.	Type	d ₁ tol. h9	d ₂ +0.10 +0.50	d ₃	h ₁	h ₂	h ₃	h ₄	m	w	Clamping force N	Shear strength N	Tensile strength N	Weight g
33934.W0807	Receiver	Ø26	Ø8	Ø16	45	15	3	2	M20x1,5	2,5	7	1800	1800	65
33934.W0815	Receiver	Ø26	Ø8	Ø16	45	15	3	2	M20x1,5	2,5	17	1800	1800	65





33936



Material

Body: steel, nickel plated.
Balls & spring: stainless steel.

Technical Notes

One-touch fasteners are the ideal solution for applications requiring rapid and recurring change over of tooling or set ups. Used in applications as diverse as bottling processes, machine covers, changing of cogs and drive belts. One-touch fasteners provide a quick, simple and secure change

over solution - no time waste in unfastening screws or other permanent fixings, and no opportunity for lost fixings in your machinery. Temperature resistant to 180°C.

Important Notes

Suitable for panels/enclosures of 6 to 32 mm thickness. Used in conjunction with pin 33930. Mechanical release only (no safety release).

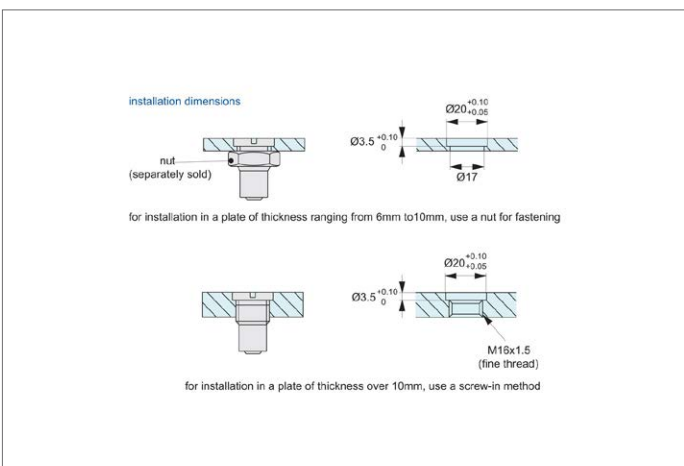
* Tensile strength stated is for locked posi-

tion/state of the fastener.

Actuation:

Engage pin into receiver, a positive „click“ is heard, securing balls are engaged. Panels are securely fastened. To release, simply pull panels apart with sufficient force to overcome securing balls, panel is released.

Order No.	Type	d_1 tol. h9	d_2 $+0.10$ $+0.05$	d_3	h_1	h_2	h_3	m	w	Clamping force N	Shear strength N	Tensile strength N	Weight g
33936.W0807	Receiver	Ø20	Ø8	Ø14	29	15	3	M16x1,5	2,5	7	1800	1800	30
33936.W0815	Receiver	Ø20	Ø8	Ø14	29	15	3	M16x1,5	2,5	15	1800	1800	30



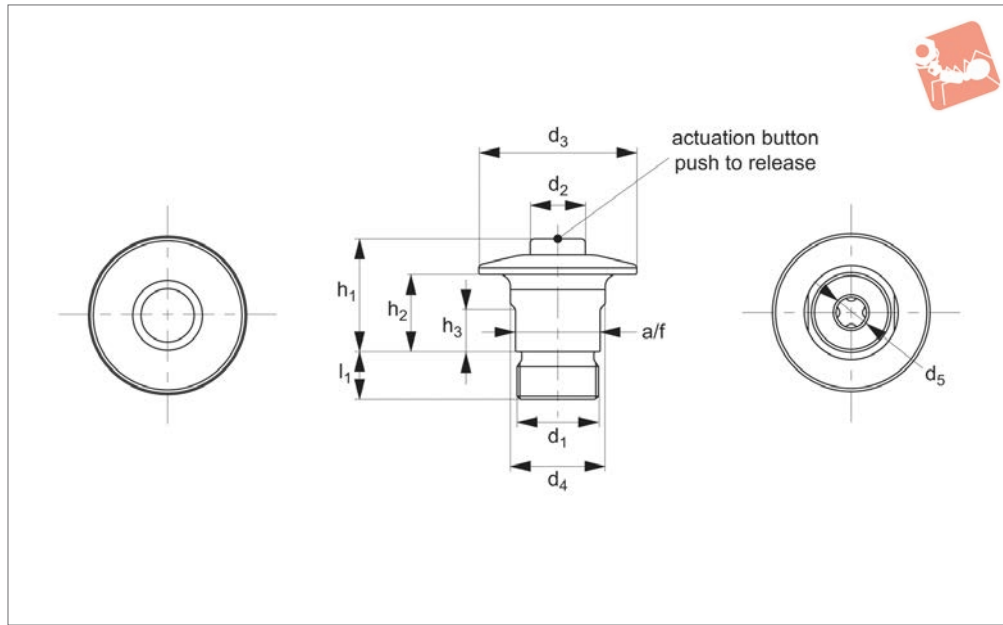


One-Touch Fastener - Ball Clamping

push button lock - button handle - stainless



One Touch Fasteners



33924

ONE TOUCH FASTENERS

Material

Body: stainless steel SUS303
 Ball: stainless steel SUS440
 Spring: stainless steel SUS304
 O-Ring: fluororubber

Technical Notes

One-touch fasteners are the ideal solution for applications requiring rapid and recurring change over of tooling or set ups. Use in applications as diverse as bottling processes, machine covers, changing of cogs and drive belts. One-touch fasteners provide a quick, simple and secure change

over solution - no time wasted in unfastening screws or other permanent fixings, and no opportunity for lost fixings in your machinery. Temperature resistant to 180°C.

Tips

Used in conjunction with pin 33923. For highly accurate locating, use locating pins 36340 & 36341

Important Notes

Suitable for panel/enclosures of 3 to 10mm thickness.

Used in conjunction with pin 33923. Tensile strength stated is for locked position/state of fastener.

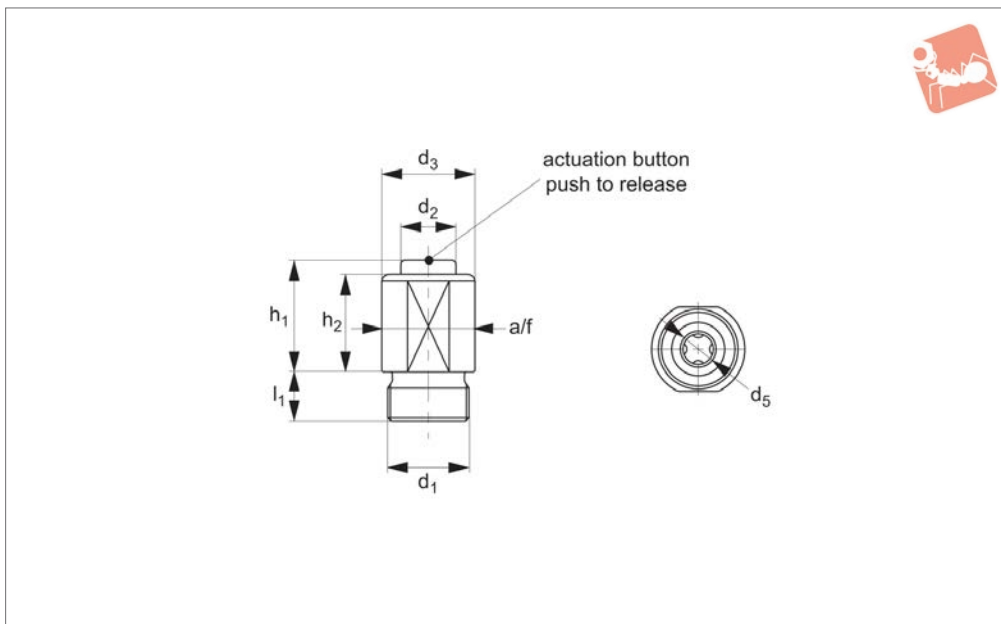
Actuation:

- Engage clamp over pin, no need to push button, a positive „click“ is heard.
- Securing balls are locked and panel fastened.
- To release; while pushing down on release button, lift panel from pin- panel is released.

Order No.	For single panel thickness	For pin dia.	d ₁	d ₂	d ₃	d ₄	d ₅ +0.4 +0.2	h ₁	h ₂	h ₃	l ₁	A/F	Clamping force N	Shear strength N	Tensile strength N	Weight g
33924.W1006	3-10	6	M16x1,0	11	32	19	6	23	15,5	8,5	9,5	17	6	1100	250	65



33925



Material

Body: stainless steel SUS303
 Ball: stainless steel SUS440
 Spring: stainless steel SUS304
 O-Ring: fluororubber

Technical Notes

One-touch fasteners are the ideal solution for applications requiring rapid and recurring change over of tooling or set ups. Use in applications as diverse as bottling processes, machine covers, changing of cogs and drive belts. One-touch fasteners

provide a quick, simple and secure change over solution - no time wasted in unfastening screws or other permanent fixings, and no opportunity for lost fixings in your machinery. Temperature resistant to 180°C.

Tips

Used in conjunction with pin 33923.

Important Notes

Suitable for pannel/enclosures of 3 to 27mm thickness. Used in conjunction

with pin 33923. Tensile strength stated is for locked position/state of fastener.

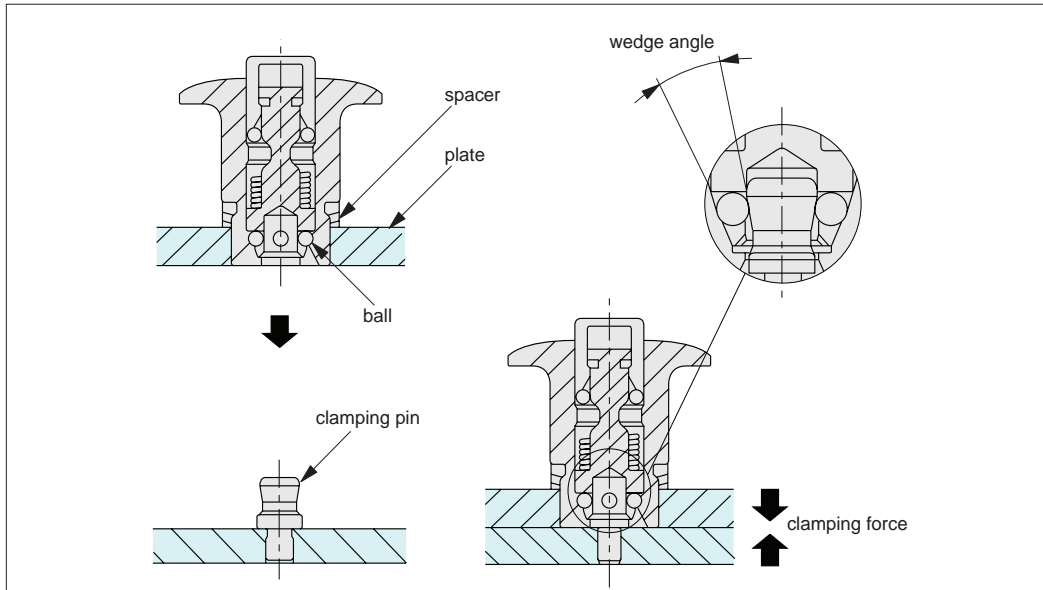
Actuation:

- To lock; engage clamp over pin, no need to push button, a positive „click“ is heard.
- Securing balls are locked and panel fastened.
- To release; while pushing down on release button, lift panel from pin- panel is released.

Order No.	For single panel thickness	For pin dia.	d ₁	d ₂	d ₃	d ₅ +0.4 +0.2	h ₁	h ₂	l ₁	A/F	Clamping force N	Shear strength N	Tensile strength N	Weight g
33925.W2706	3-27	6	M16x1,0	11	19	6	23	19.5	9.5	17	6	1100	250	50



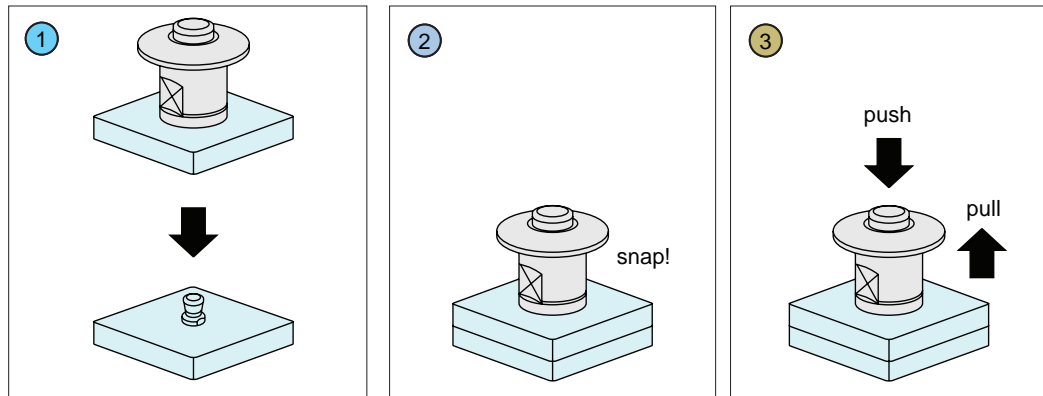
Operating Principle



Four ball bearings clamp onto the clamping pin (33923), the wedge shape of the pin draws the panels together during clamping.

ONE TOUCH FASTENERS

Operating Instructions



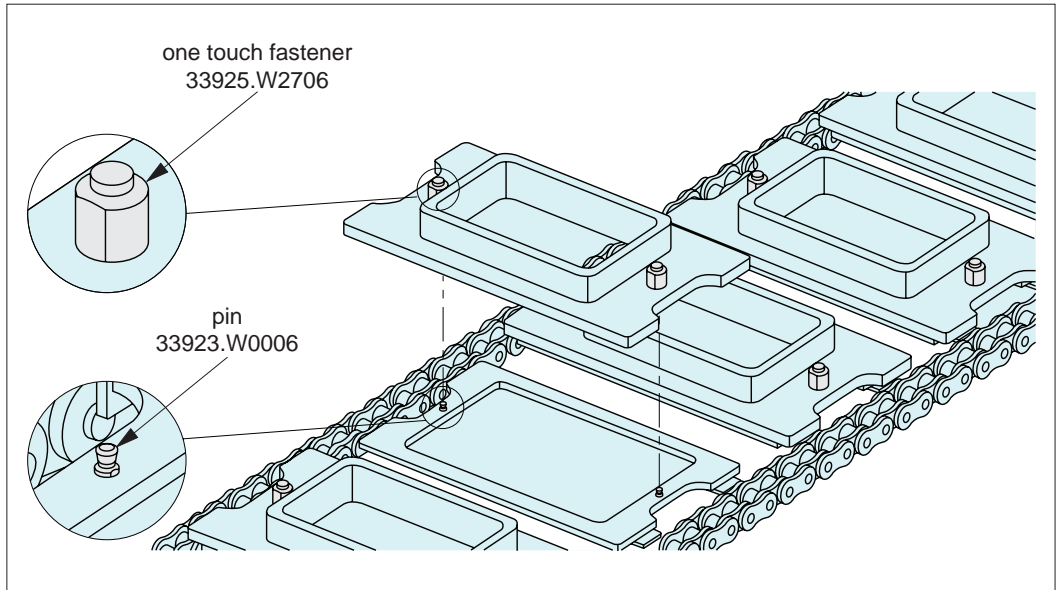
- 1 Engage clamp over pin, no need to push button, a positive "click" is heard.
- 2 Securing balls are locked and panel fastened.
- 3 To release; while pushing down on release button, lift panel from pin - panel is released.

ov-W33924-A-T-W33925-A-T-ball-clamping-one-touch-fasteners-a-rmh - Updated - 27-10-2022

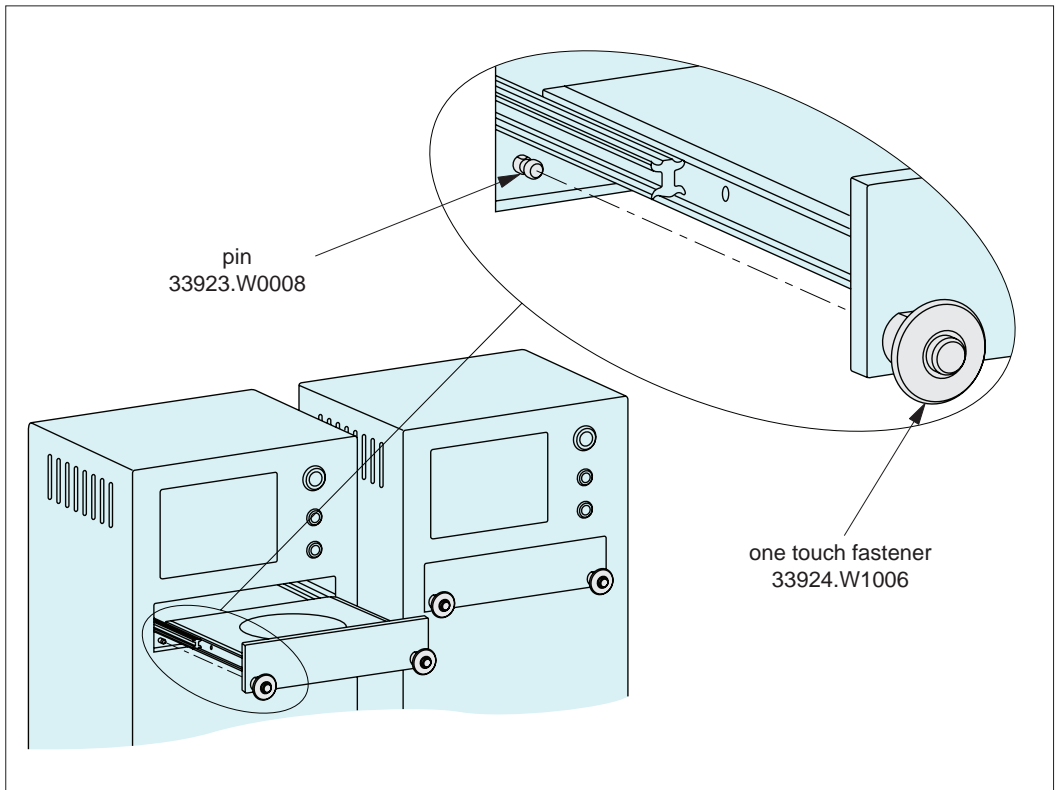


One Touch Fastener Applications

Changes of Trays and Containers on Conveyers

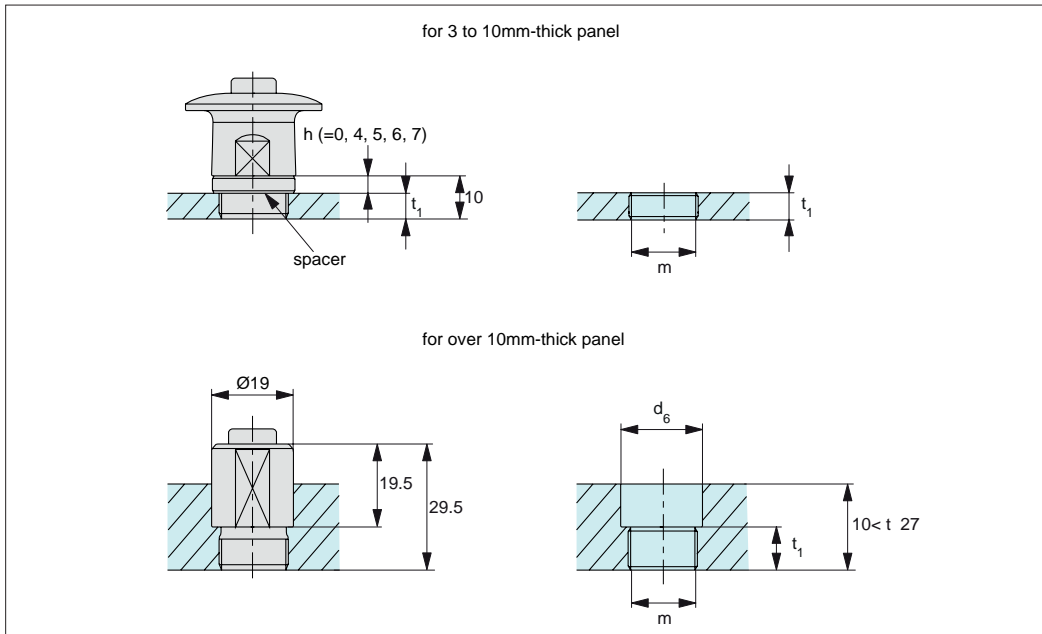


Securing Sliding Elements Such as Drawers

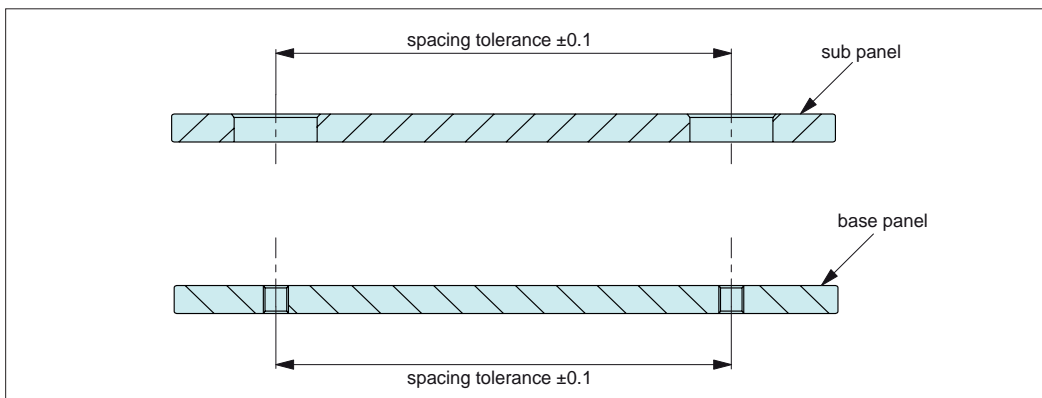




Installation Dimensions

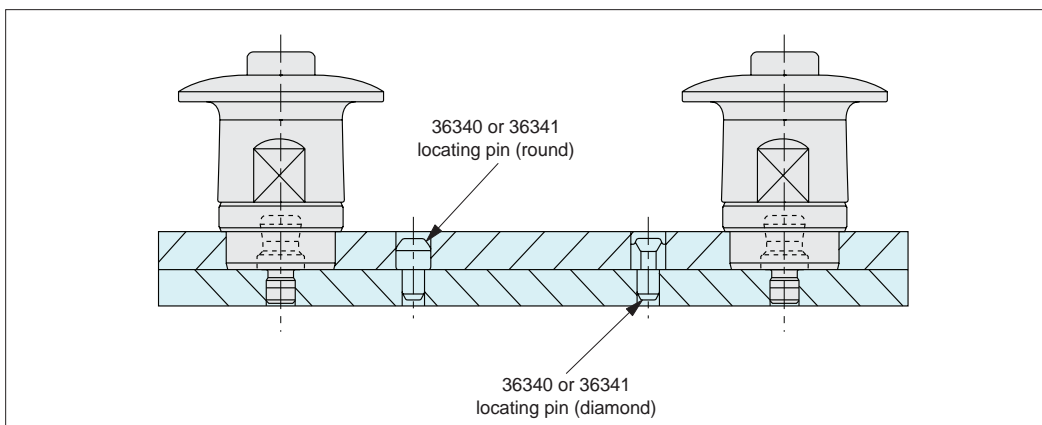


Installation Best Practice



Panel Tolerances

Spacing tolerance on both the sub panel and the base panel should be ± 0.1 .

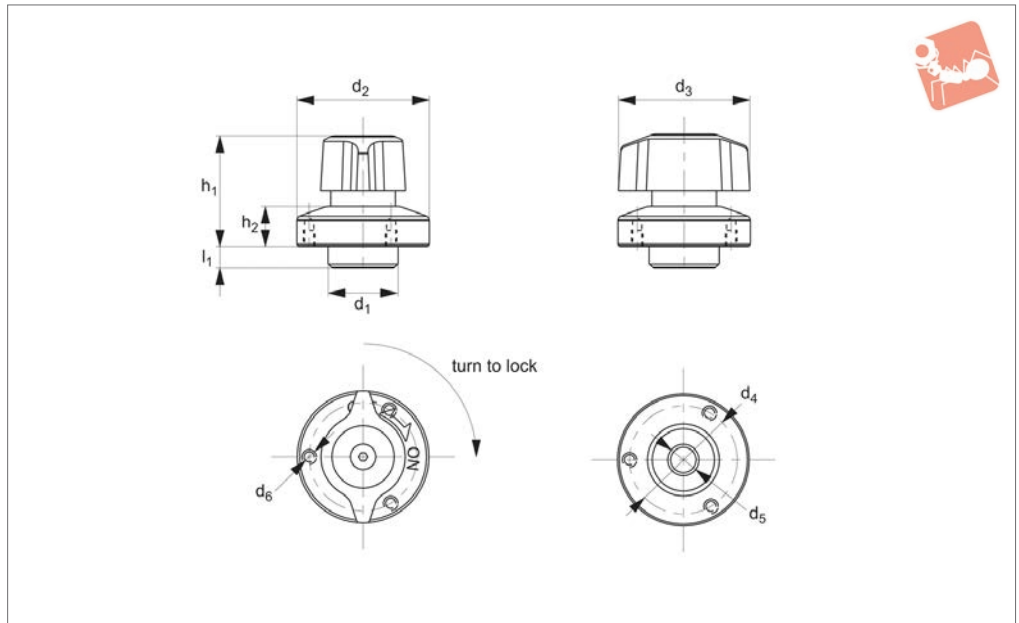


Repeatability

For highly accurate locating, use locating pins 36340 or 36341. Repeatability of ± 0.25 is achievable.



33927



Material

Body & Shank: steel, nickel plated.
 Knob: polyamide, black.
 Ball & Spring: Stainless steel.

Technical Notes

One-touch fasteners are the ideal solution for applications requiring rapid and recurring change over of tooling or set ups. Use in applications as diverse as bottling

processes, machine covers, changing of cogs and drive belts. One-touch fasteners provide a quick, simple and secure change over solution - no time wasted in unfastening screws or other permanent fixings, and no opportunity for lost fixings in your machinery.

Tips

Used in conjunction with pin 33923.

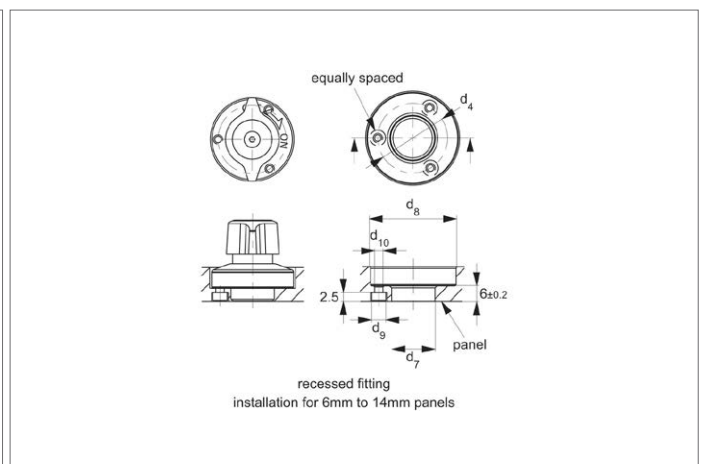
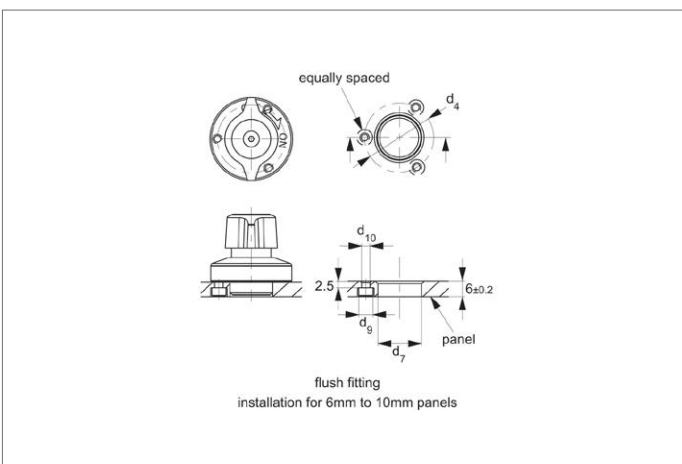
For highly accurate locating, use locating pins 36340 & 36341.

Actuation

-Turn handle to off position, clamping balls are retracted. Engage panel and clamp over clamping pin. Turn handle on to position to clamp.

-To unclamp, reverse steps above.

Order No.	For single panel thickness	For pin dia.	d ₁ tol. h9	d ₂	d ₃	d ₄	d ₅ +0.4 +0.2	d ₆	h ₁	h ₂	l ₁	Clamping force N	Shear strength N	Tensile strength N	Weight g
33927.W1006	6-10	6	14	25	25	21	6	M2x0,4	23	6,5	5,5	7	1100	250	35
33927.W1408	6-14	8	18	34	34	28	8	M3x0,5	28	10,0	5,5	9	1800	400	85



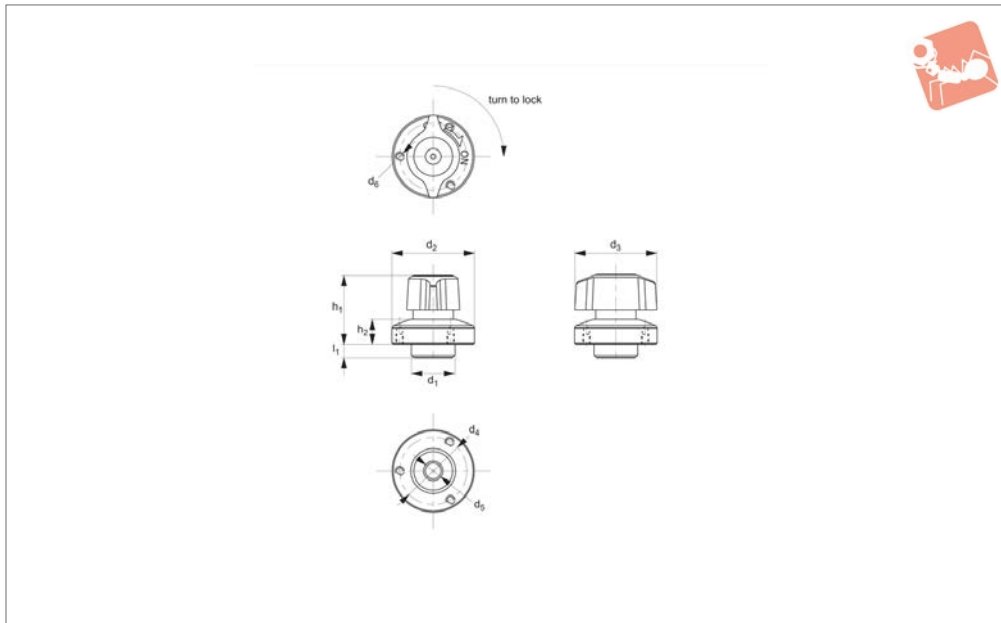


One-Touch Fastener - Ball Clamping

quarter turn lock- t-handle-steel



One Touch Fasteners



33928

ONE TOUCH FASTENERS

Material

Body & shank: steel, nickel plated.
Knob: tainless steel.
Ball & spring: stainless steel.

Technical Notes

One-touch fasteners are the ideal solution for applications requiring rapid and recurring change over of tooling or set ups. Use in applications as diverse as bottling

processes, machine covers, changing of cogs and drive belts. One-touch fasteners provide a quick, simple and secure change over solution - no time wasted in unfastening screws or other permanent fixings, and no opportunity for lost fixings in your machinery.

Tips

Used in conjunction with pin 33923.

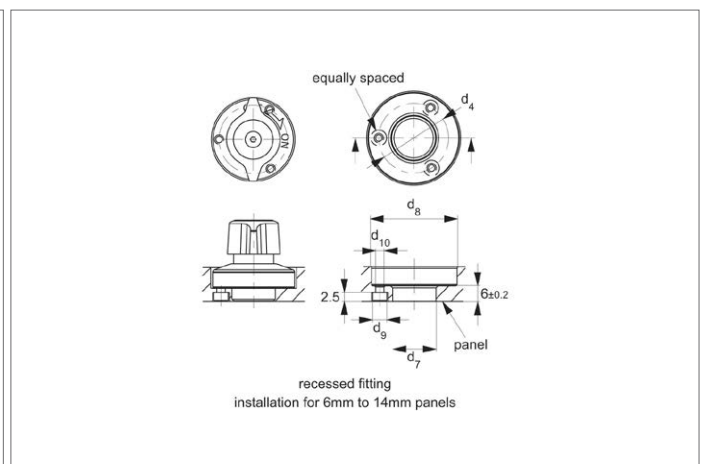
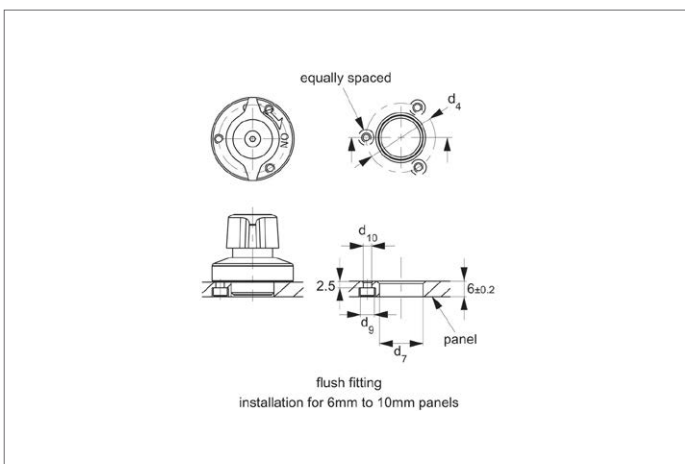
For highly accurate locating, use locating pins 36340 & 36341.

Actuation

-Turn handle to off position, clamping balls are retracted. Engage panel and clamp over clamping pin. Turn handle on to position to clamp.

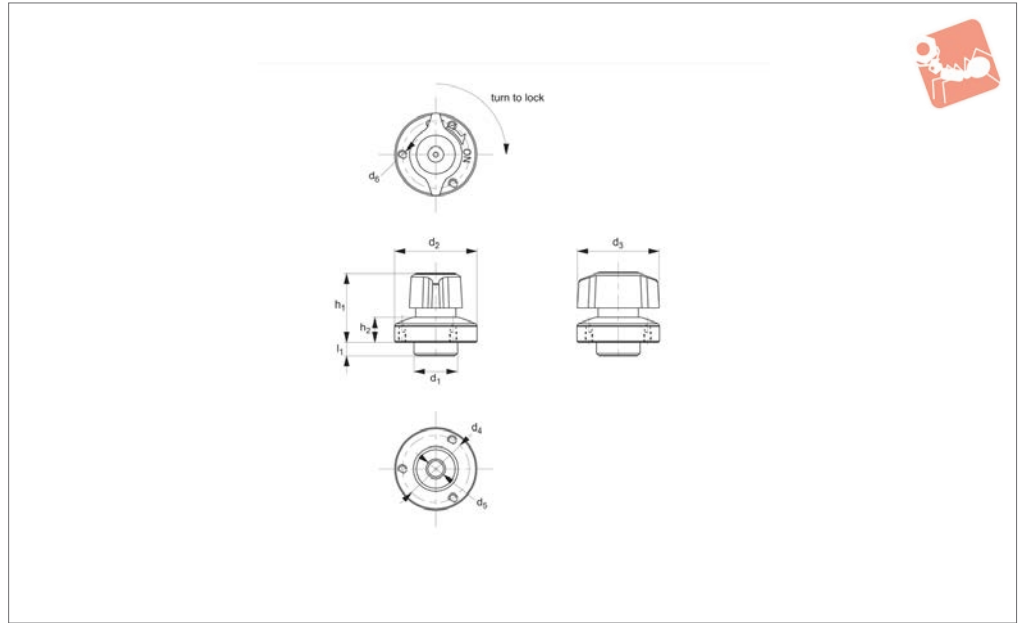
-To unclamp, reverse steps above.

Order No.	For single panel thickness	For pin dia.	d ₁ tol. h9	d ₂	d ₃	d ₄	d ₅ +0.4 +0.2	d ₆	h ₁	h ₂	l ₁	Clamping force N	Shear strength N	Tensile strength N	Weight g
33928.W1006	6-10	6	14	25	25	21	6	M2x0,4	23	6,5	5,5	7	1100	250	35
33928.W1408	6-14	8	18	34	34	28	8	M3x0,5	28	10,0	5,5	9	1800	400	85





33929



Material

Body & shank: stainless steel.
Knob: stainless steel.
Ball & spring: stainless steel.

Technical Notes

One-touch fasteners are the ideal solution for applications requiring rapid and recurring change over of tooling or set ups. Use in applications as diverse as bottling

processes, machine covers, changing of cogs and drive belts. One-touch fasteners provide a quick, simple and secure change over solution - no time wasted in unfastening screws or other permanent fixings, and no opportunity for lost fixings in your machinery.

Tips

Used in conjunction with pin 33923.

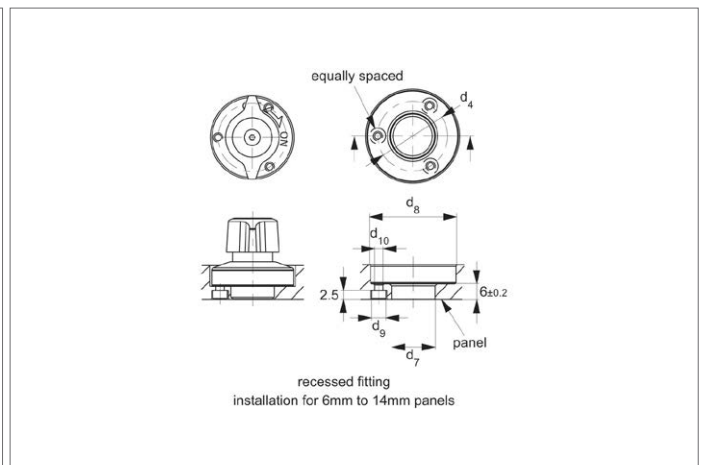
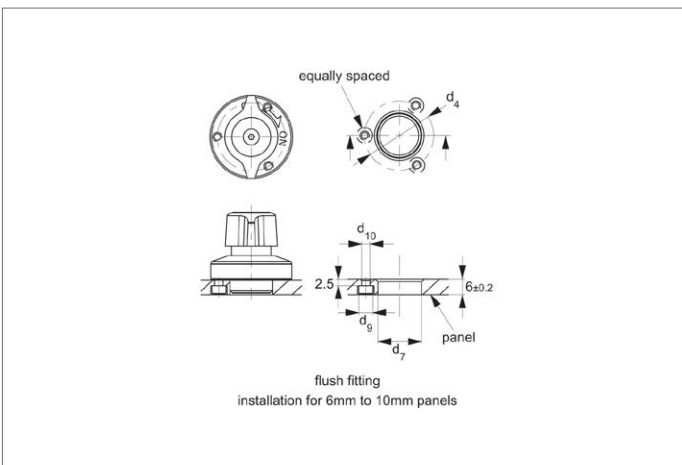
For highly accurate locating, use locating pins 36340 & 36341.

Actuation

-Turn handle to off position, clamping balls are retracted. Engage panel and clamp over clamping pin. Turn handle on to position to clamp.

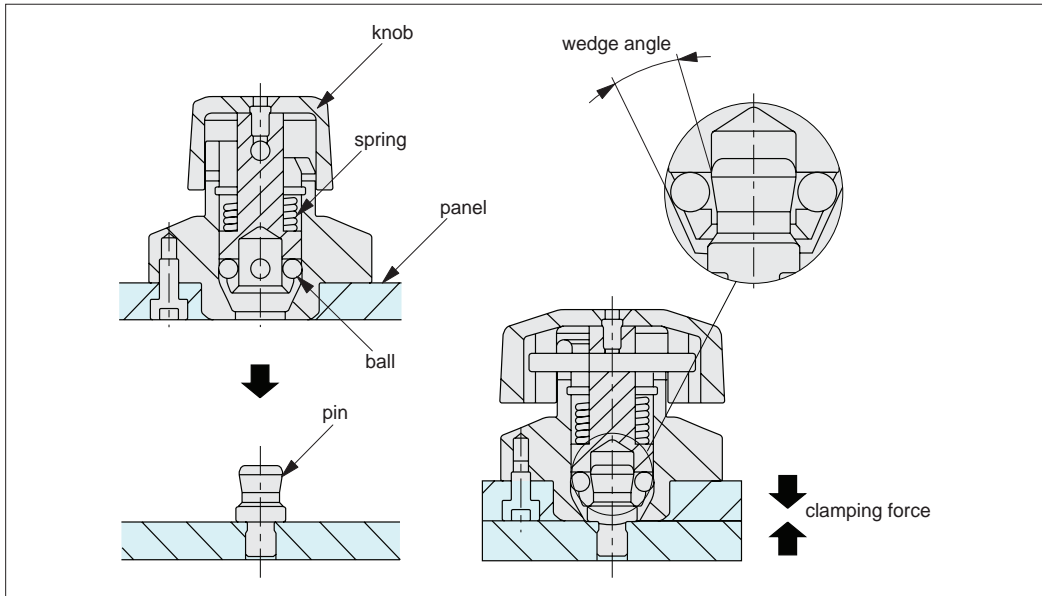
-To unclamp, reverse steps above.

Order No.	For single panel thickness	For pin dia.	d ₁ tol. h9	d ₂	d ₃	d ₄	d ₅ +0.4 +0.2	d ₆	h ₁	h ₂	l ₁	Clamping force N	Shear strength N	Tensile strength N	Weight g
33929.W1006	6-10	6	14	25	25	21	6	M2x0,4	23	6,5	5,5	7	1100	250	35
33929.W1408	6-14	8	18	34	34	28	8	M3x0,5	28	10,0	5,5	9	1800	400	85



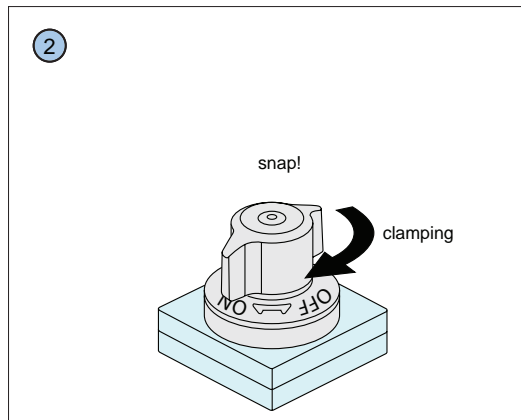
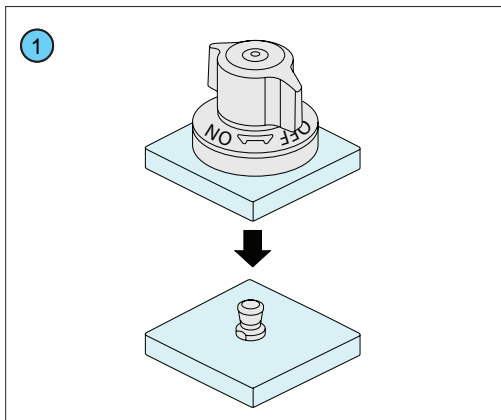


Operating Principle



Four ball bearings clamp onto the clamping pin, the wedge shape of the pin (33929) draws the panels together during clamping.

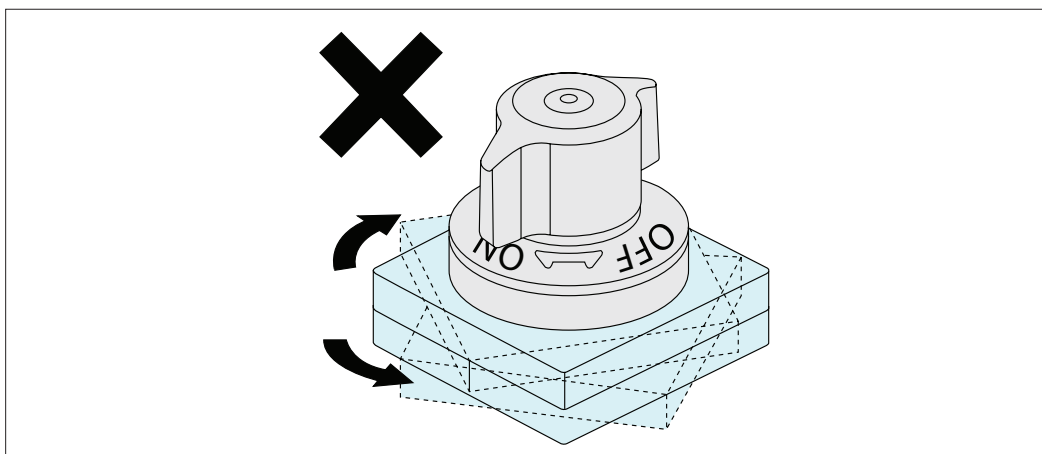
Operating Instructions



1 Turn handle to off position to retract the clamping balls. Engage panel and clamp over clamping pin. Turn handle on to position to clamp.

2 To unclamp, reverse steps above.

Warning

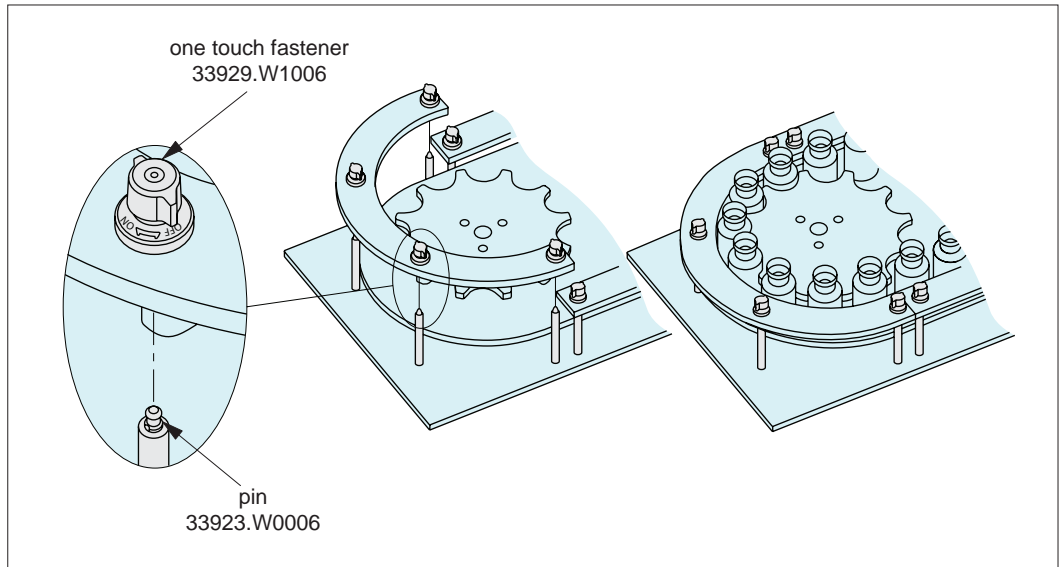


Rotation of either sub panel or base panel can result in one touch fastener unclamping. When either panel is at risk of rotating ensure a stop is in place.

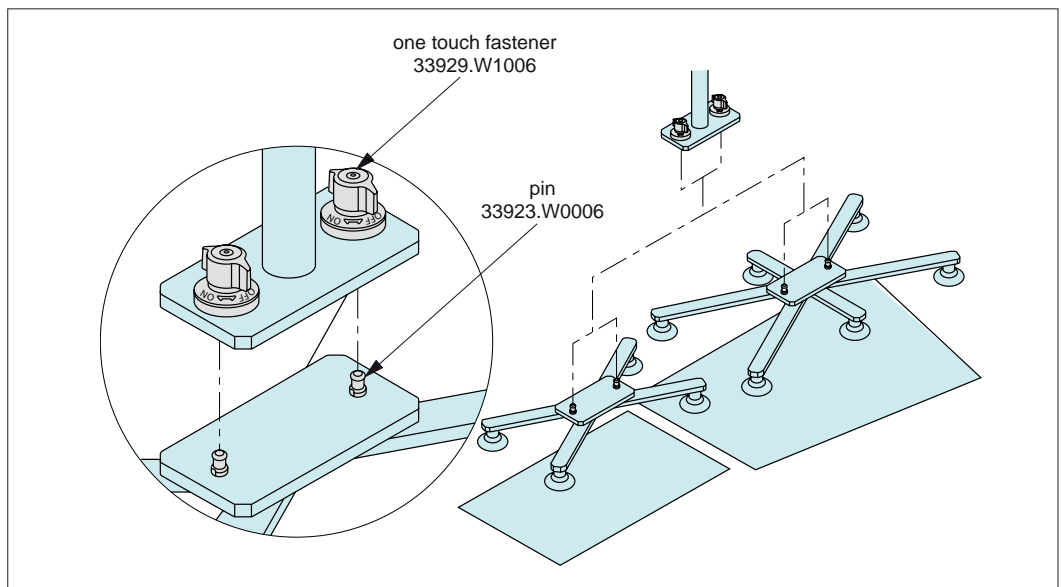


Applications

Changes of Guides Around Star Wheels

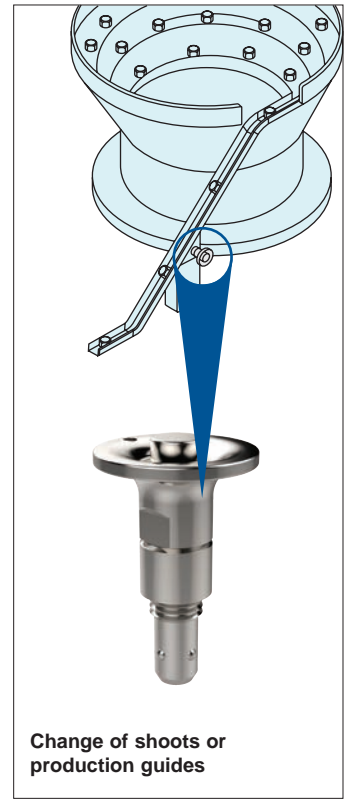
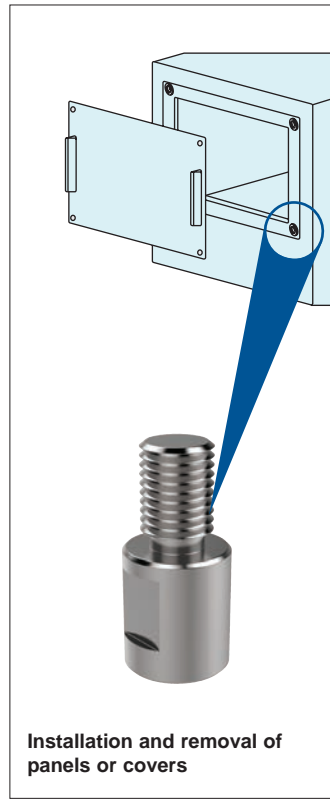
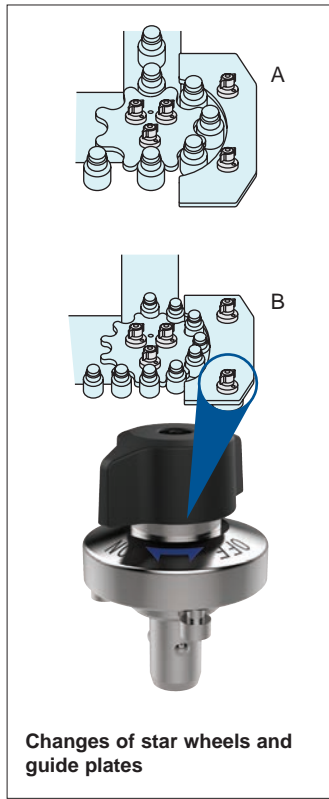
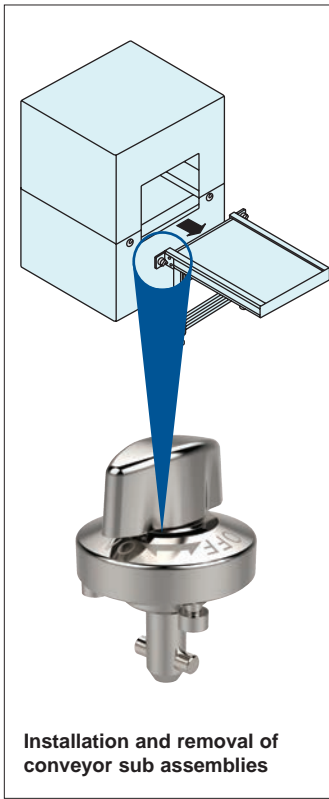


Changes of Suction Grippers for Wafer Handling





One-Touch Fasteners - Alternatives to Screws



ONE TOUCH FASTENERS

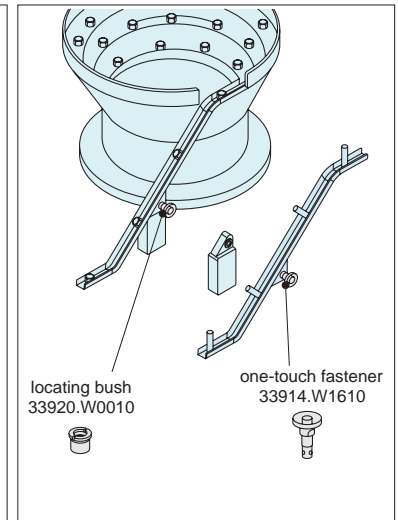
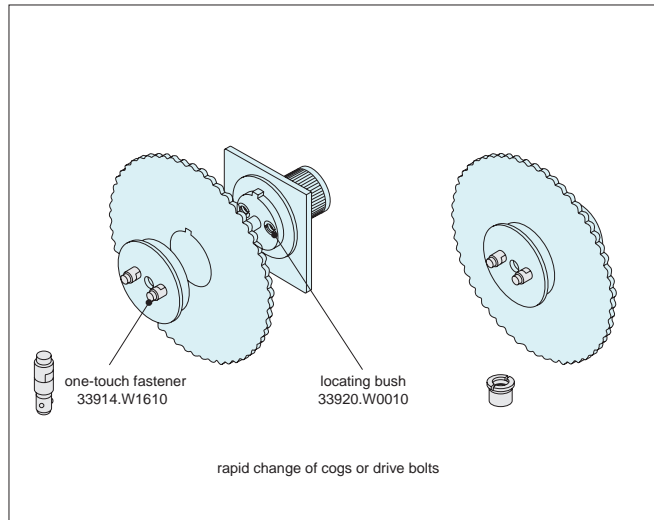
Easy & Secure! For Quick Changeover with No Tools!



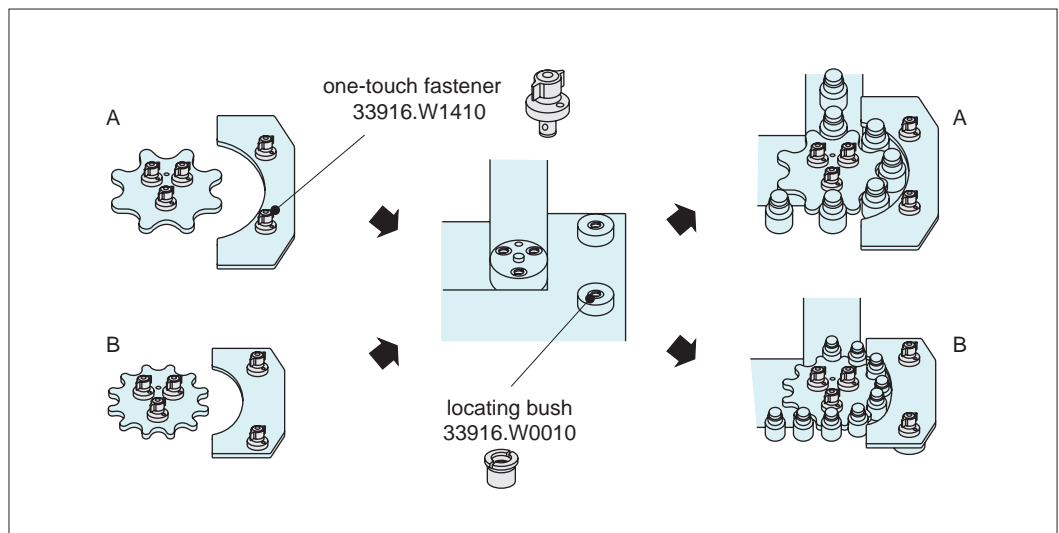


One-Touch Change Over

Installation and Removal of Rotary Blades and Changes of Shooters



Changes of Star Wheels and Guide Plates



Changes of Pusher and Changes of Chuck Handling Machines

