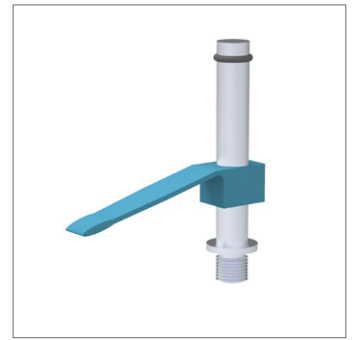
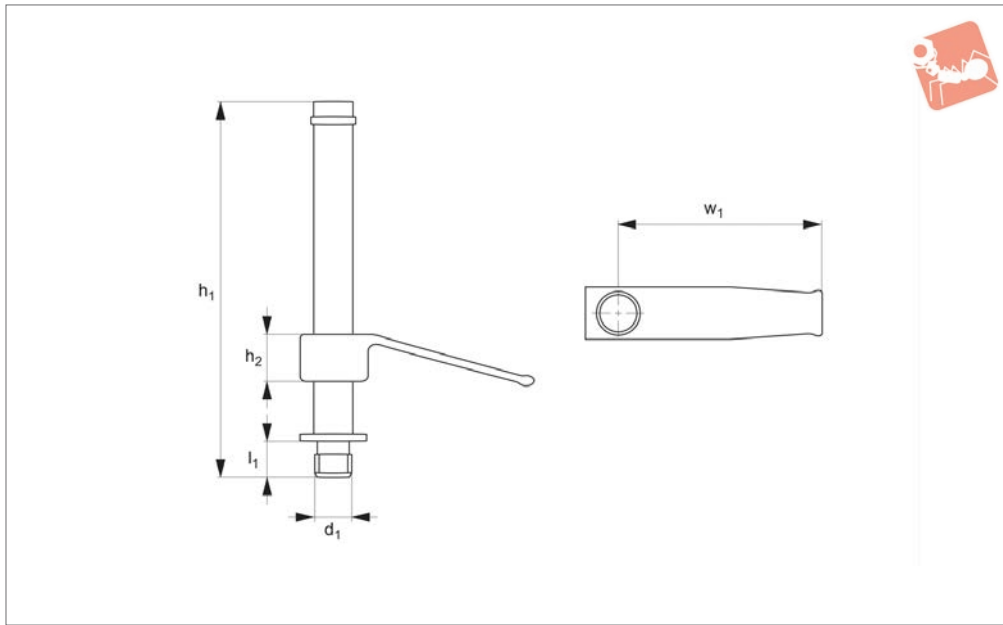




CMM Soft Touch Clamps

M 8 threads

Gauging & Inspection



19320

GAUGING & INSPECTION

Material

Aluminium.

Technical Notes

For fixturing on CMMs only, not recom-

mended for machining.

Tips

Optional rubber coated tip helps prevent marring of parts during inspection.

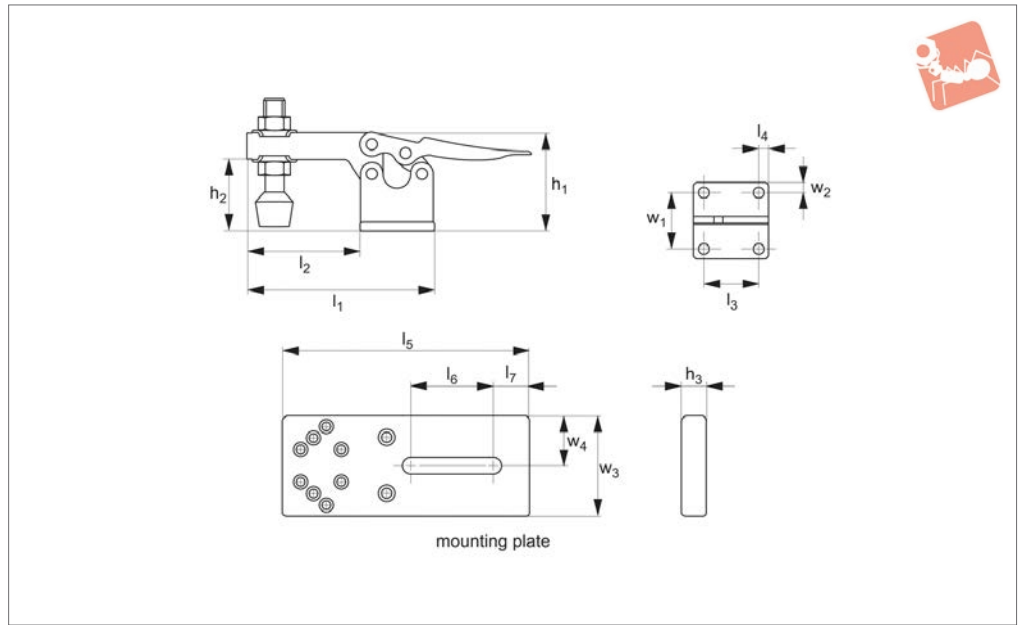
Important Notes

Ideal for light pressure clamping, actuated by finger pressure.

Order No.	Type	d ₁	h ₁	h ₂	l ₁	w ₁	Weight g
19320.W0008	Standard	M 8	75	8	6.37	39.0	68
19320.W0012	Standard	M 8	75	12	6.37	58.7	92
19320.W0108	Rubber coated tip	M 8	75	8	6.37	39.0	68
19320.W0112	Rubber coated tip	M 8	75	12	6.37	58.7	92



19322



Material

Single toggle clamp supplied with matching mounting plate.

mounting base for easy adjustment and positioning.

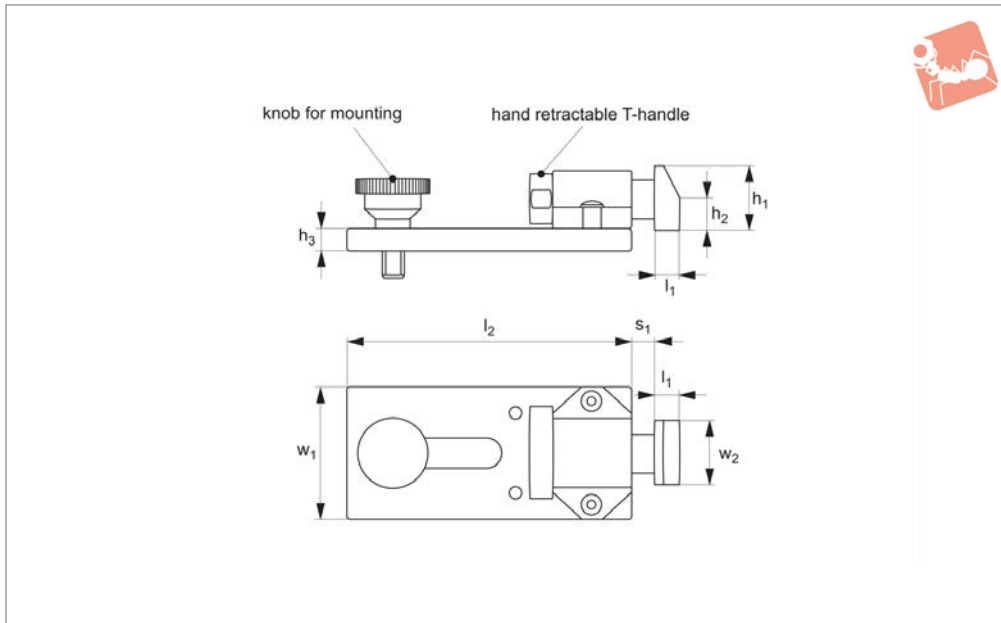
Technical Notes

Hold parts for probing on CMMs. Sliding

Tips

Supplied with thumb screws to locate toggle clamp mounting plate.

Order No.	h_1	h_2	h_3	l_1	l_2	l_3	l_4	l_5	l_6	l_7	w_1	w_2	w_3	w_4	Weight g
19322.W0075	19.05	7.9	6.3	67.5	17.46	15.9	7.9	80	25	13	15.9	3.97	38	19	591
19322.W0150	38.1	25.4	6.3	138.1	57.1	26.9	4.7	80	25	13	22.2	6.7	38	19	1000



19324

GAUGING & INSPECTION

Material

Steel.

allows for quick part changeover. Sliding mounting base for easy adjustment and positioning.

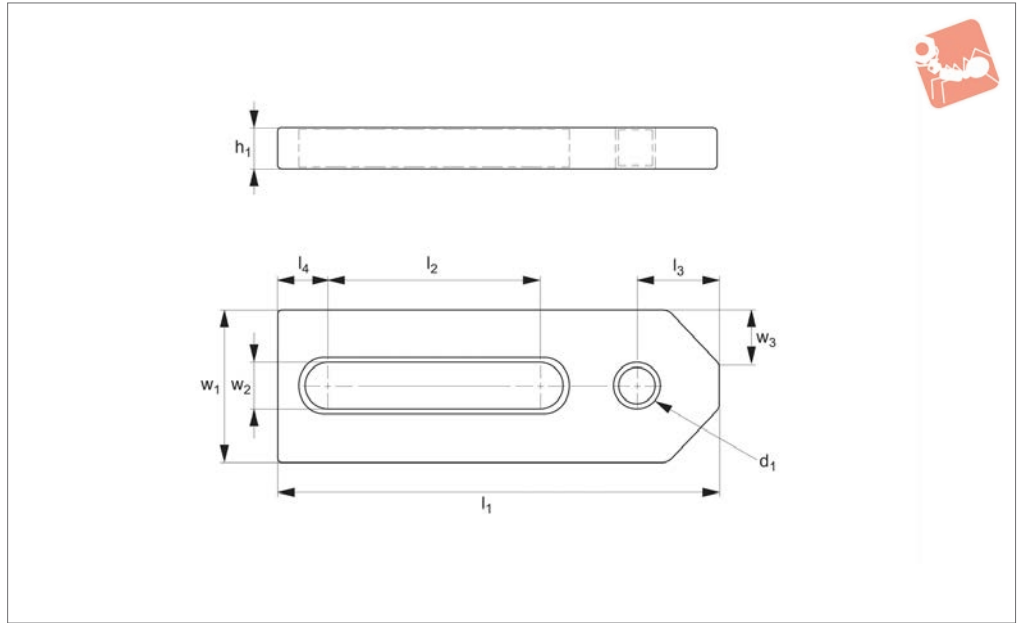
Important Notes

Provides horizontal clamping. T-handle

Order No.	Stroke s_1	h_1	h_2	h_3	l_1	l_2	w_1	w_2	Weight g
19324.W0025	4.8	15.9	7.9	6.35	6.4	80	38	15.9	682



19326



GAUGING & INSPECTION

Important Notes

Sliding mounting base for easy adjustment and positioning. Thumb screw included.

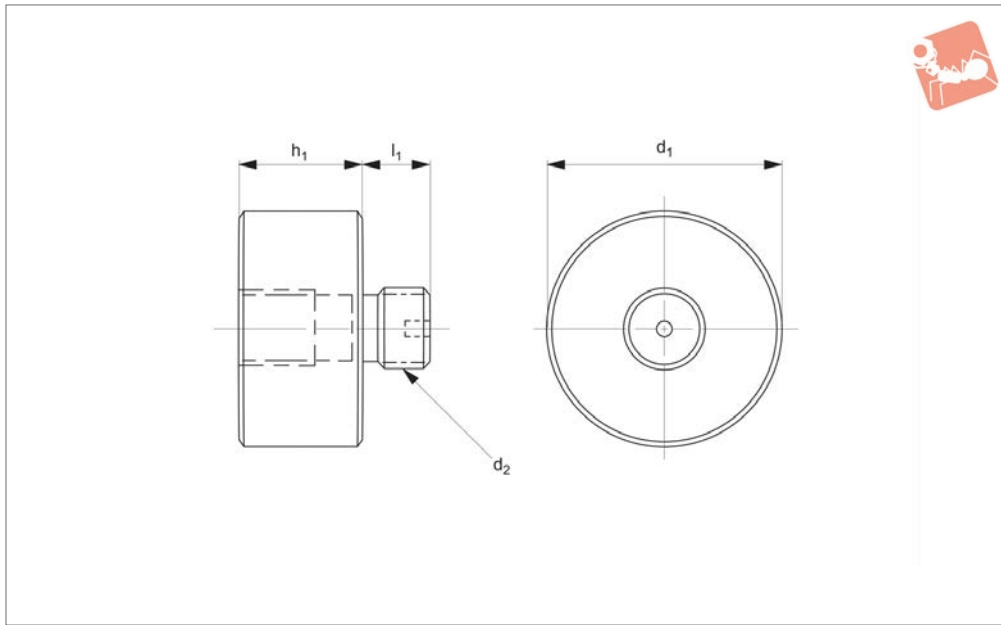
Order No.	d ₁	h ₁	l ₁	l ₂	l ₃	l ₄	w ₁	w ₂	w ₃ 45° ±0.2	Weight g
19326.W0050	M 8	6.4	51	22	5.0	8	15	8.75	5.0	96
19326.W0075	M 8	6.4	76	45	6.4	8	25	8.75	6.4	150



CMM Fixturing Stand offs

M 8 threads

Gauging & Inspection



19330

GAUGING & INSPECTION

Material

Carbon steel.

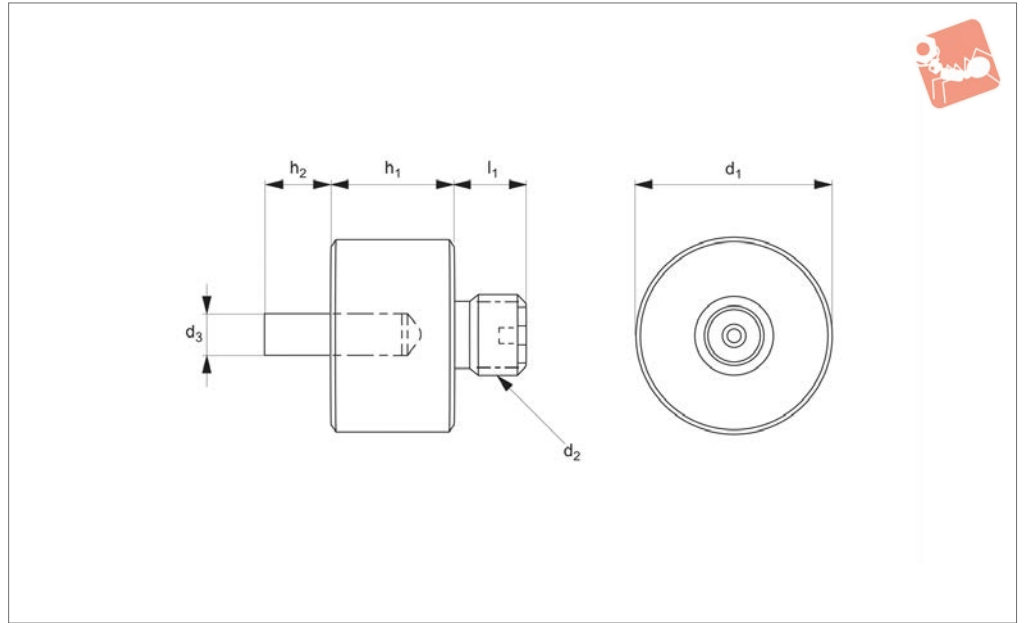
Important Notes

Provides resting point to raise part for probing.

Order No.	d ₁	d ₂	h ₁	l ₁	Weight g
19330.W1315	13	M 8	15	8	91
19330.W1320	13	M 8	20	8	136
19330.W1325	13	M 8	25	8	182
19330.W1350	13	M 8	50	8	364
19330.W1375	13	M 8	75	8	409
19330.W1915	19	M 8	15	8	136
19330.W1920	19	M 8	20	8	182
19330.W1925	19	M 8	25	8	227
19330.W1950	19	M 8	50	8	454
19330.W1975	19	M 8	75	8	591
19330.W2515	25	M 8	15	8	182
19330.W2520	25	M 8	20	8	227
19330.W2525	25	M 8	25	8	272
19330.W2550	25	M 8	50	8	500
19330.W2575	25	M 8	75	8	727



19331



Material

Carbon steel.

Important Notes

Provides point of rest and side stop for locating.

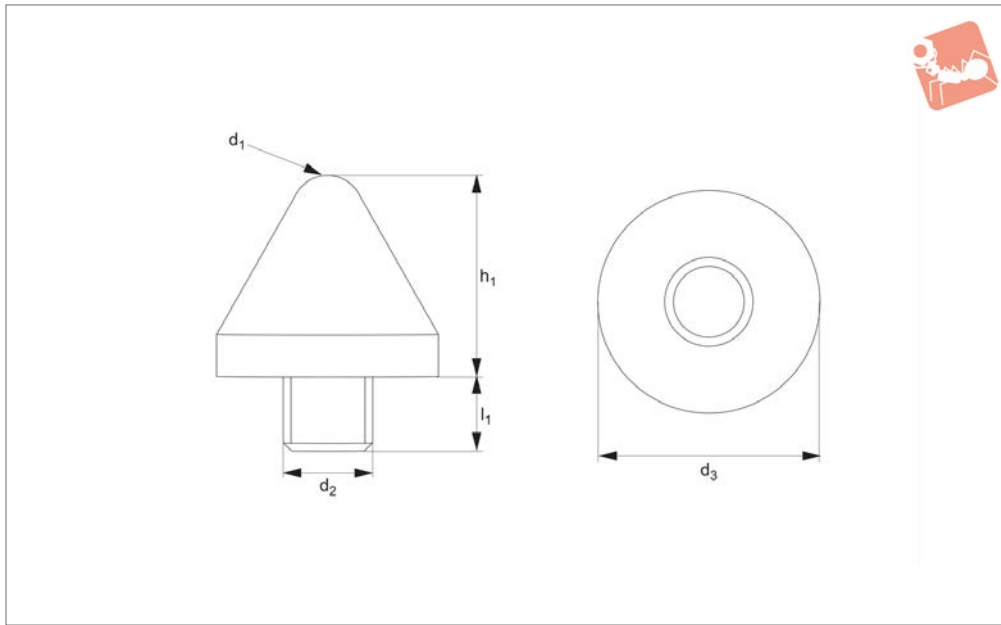
Order No.	d ₁	d ₂	d ₃	h ₁	h ₂	l ₁	Weight g
19331.W1325	13	M 8	3	25	6	6.4	91
19331.W1925	19	M 8	3	25	6	6.4	136



CMM Fixturing Positioning Cones

M 8 threads

Gauging & Inspection



19332

GAUGING & INSPECTION

Material

Cone: thermoplastic.
Stud: steel.

Important Notes

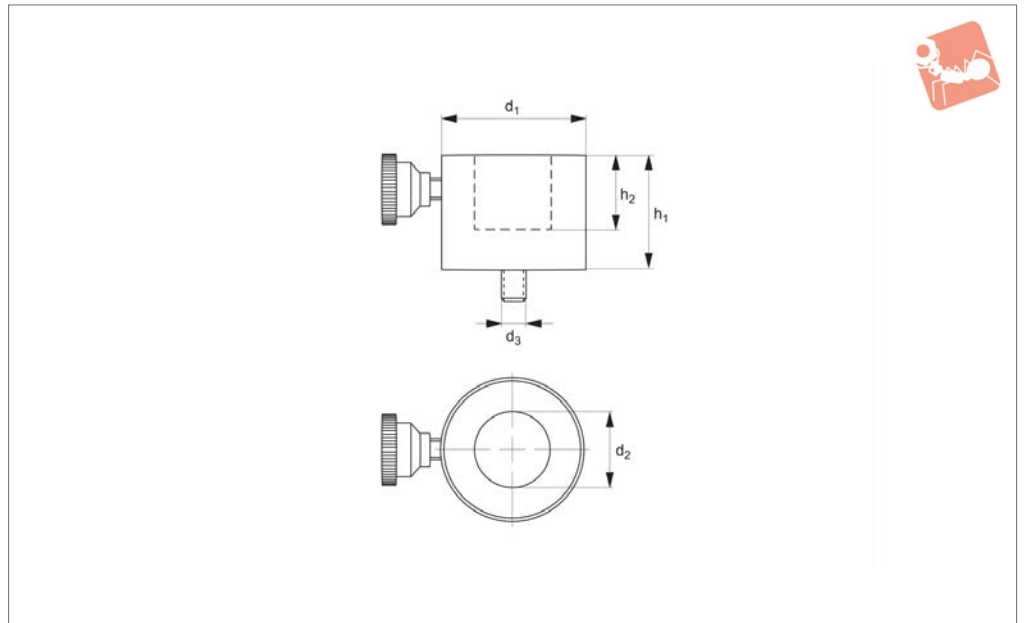
For resting cylindrical or curved parts.
Thermoplastic, offers non-marring attri-

bute.

Order No.	d ₁	d ₂	d ₃	h ₁	l ₁	Weight g
19332.W1613	4	M 8	16	13	6.4	114



19333



Material

Thermoplastic.

hold cylindrical parts. Use with magnetic vee, part 19338.

Important Notes

For aligning multiple magnetic vees to

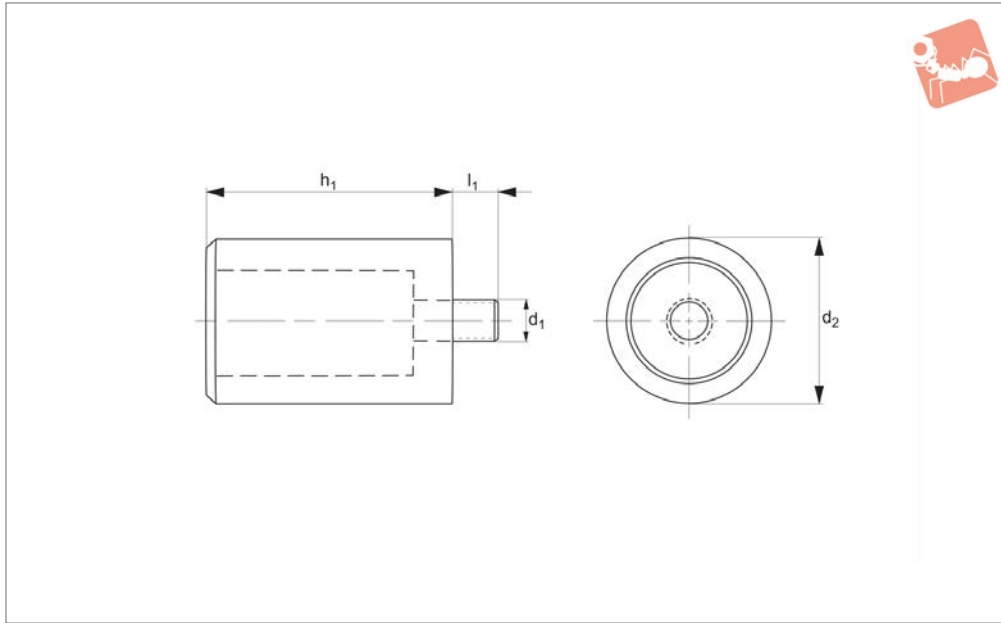
Order No.	d ₁	d ₂	d ₃	h ₁ max.	h ₂ stroke	Weight g
19333.W2832	28	13.5	M 8	32	15.8	91
19333.W3532	35	19.5	M 8	32	15.8	136
19333.W4132	41	25.4	M 8	32	13.0	182



CMM Fixturing Magnetic Rest Buttons

M 8 threads

Gauging & Inspection



19336

GAUGING & INSPECTION

Material

AL NICO magnet in brass sleeve.

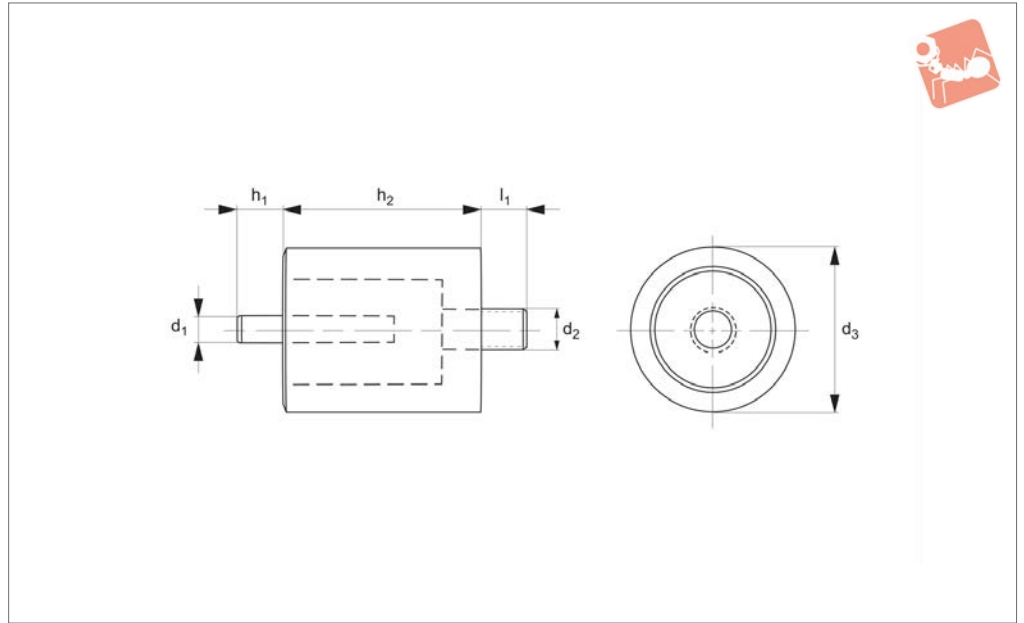
Important Notes

For fixturing steel or iron parts. Magnetic force holds parts during probing.

Order No.	d_1	d_2	h_1	l_1	Weight g
19336.W1325	M 8	12.7	25	8	91
19336.W1925	M 8	19.0	25	8	227
19336.W2525	M 8	25.4	25	8	273



19337



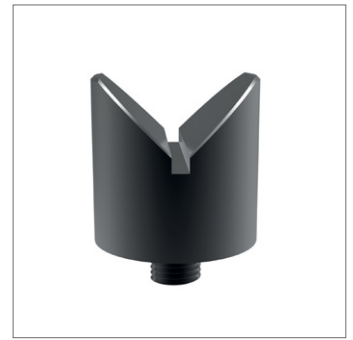
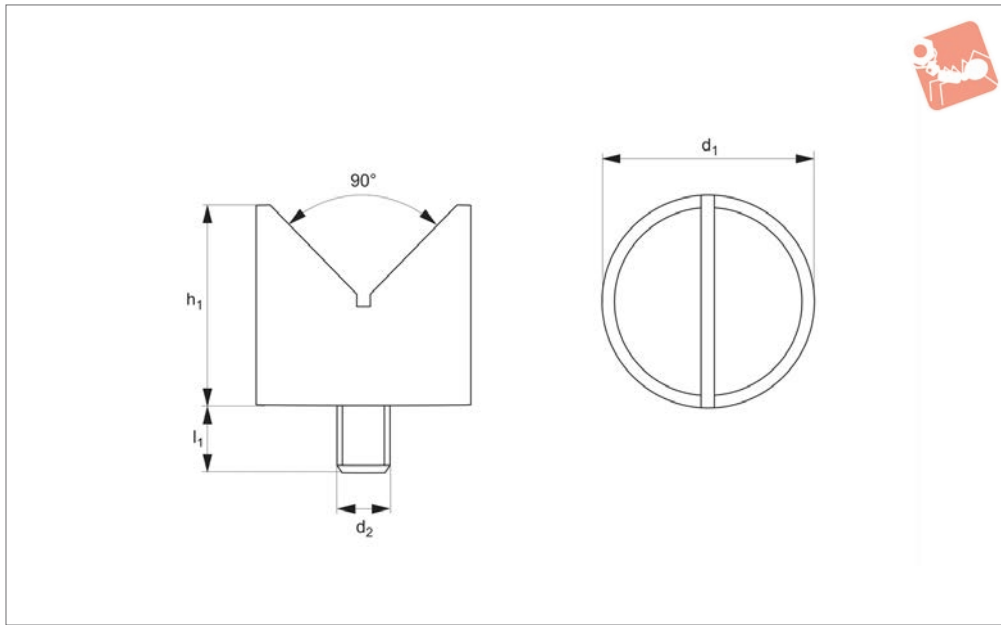
Material

AL NICO magnet in brass sleeve.

Important Notes

For fixturing steel or iron parts. Magnetic force holds parts during probing.

Order No.	d ₁	d ₂	d ₃	h ₁	h ₂	l ₁
19337.W1325	3	M 8	12.7	6	25	8
19337.W1925	3	M 8	19.0	6	25	8
19337.W2525	3	M 8	25.4	6	25	8



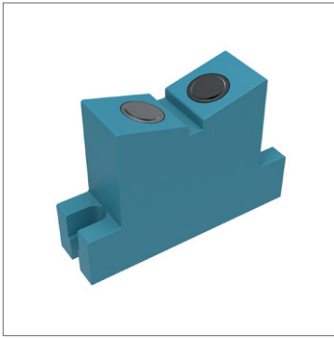
19338

GAUGING & INSPECTION

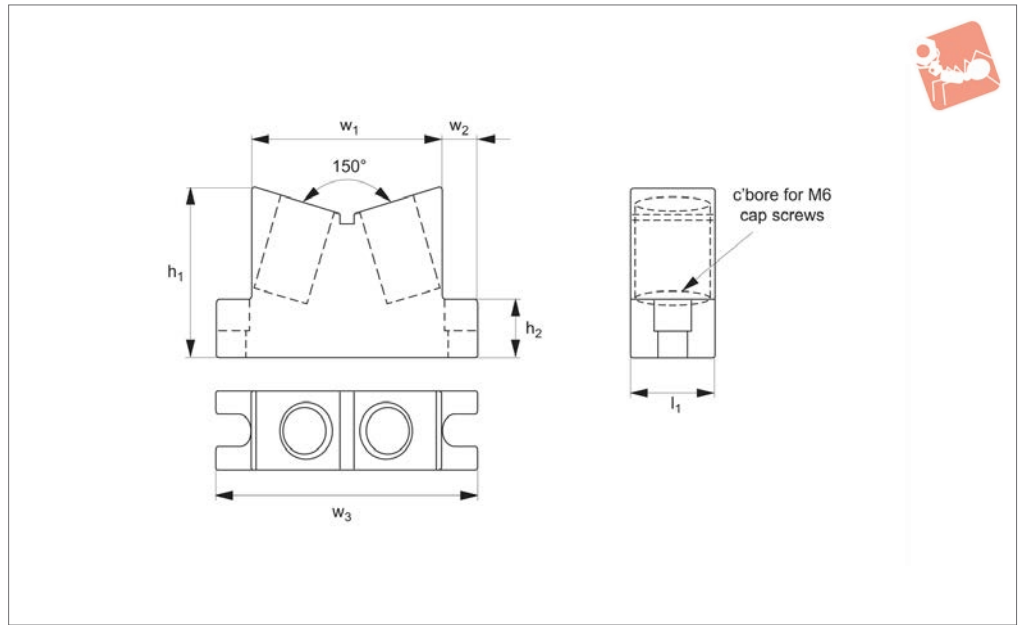
Important Notes

For fixturing cylindrical steel or iron parts.
Magnetic force holds parts during probing.

Order No.	d ₁	d ₂	h ₁	l ₁	Holding dia.	Weight g
19338.W1325	12.7	M 8	25.4	6.4	3-16	68
19338.W2525	25.4	M 8	25.4	6.4	3-40	182



19339

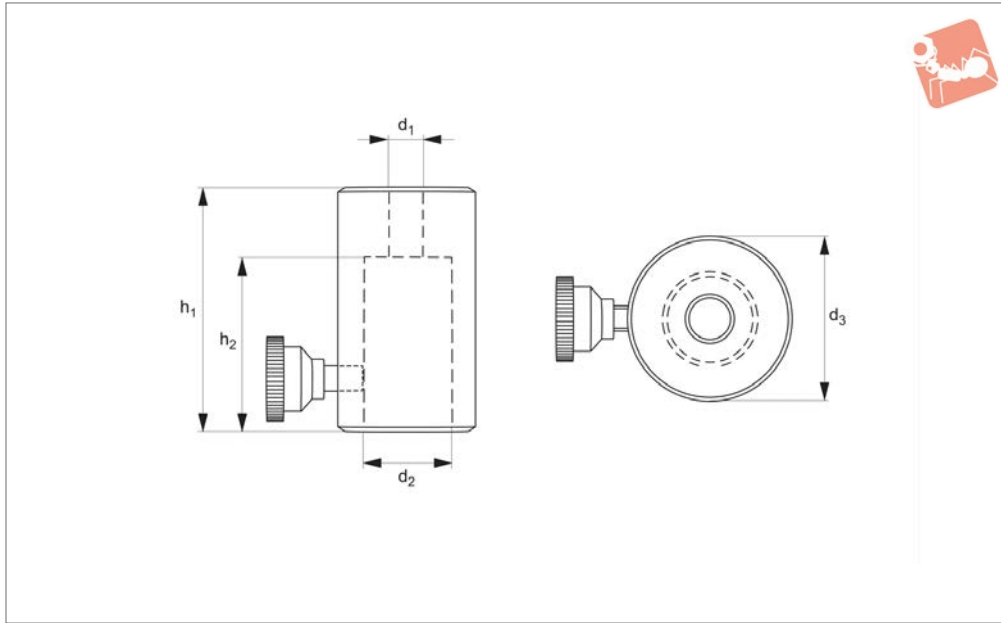


Important Notes

For holding large cylindrical steel or iron parts. Includes two cap screws to fasten to

plate.

Order No.	h_1	h_2	l_1	w_1	w_2	w_3	For holding dia.	Weight g
19339.W0050	42	22	25	63.4	14	92	50-160	454



19350

GAUGING & INSPECTION

Material

Thermoplastic.

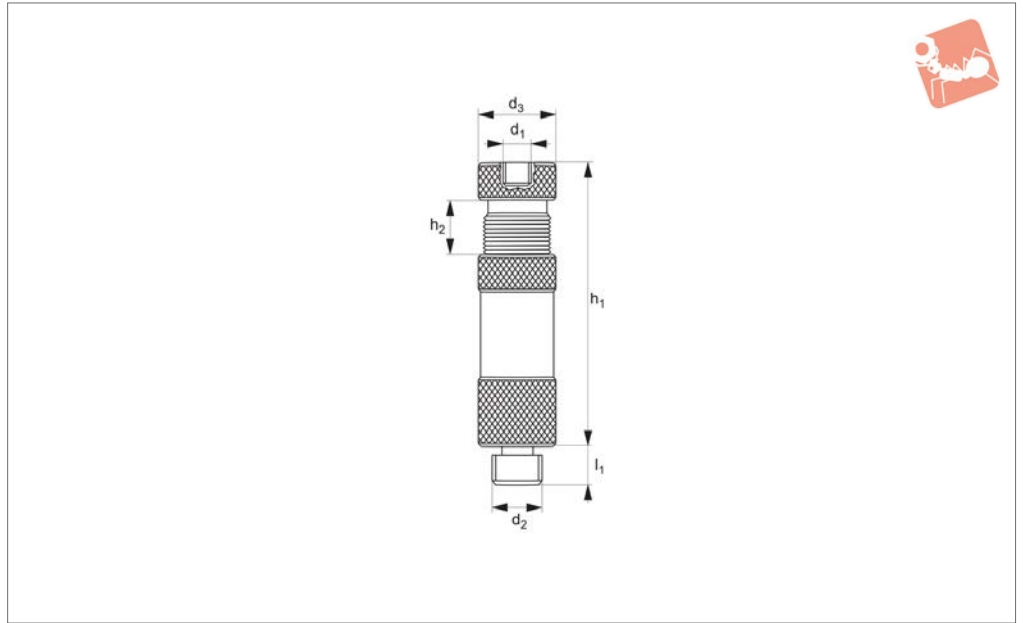
Important Notes

Slips over $\varnothing 12,7$ standoffs. Knurled knob quickly tightens for height adjustment.

Order No.	d_1	d_2	d_3	h_1	h_2	Weight g
19350.W0028	M 8	12.7	28	50	38	70



19352



GAUGING & INSPECTION

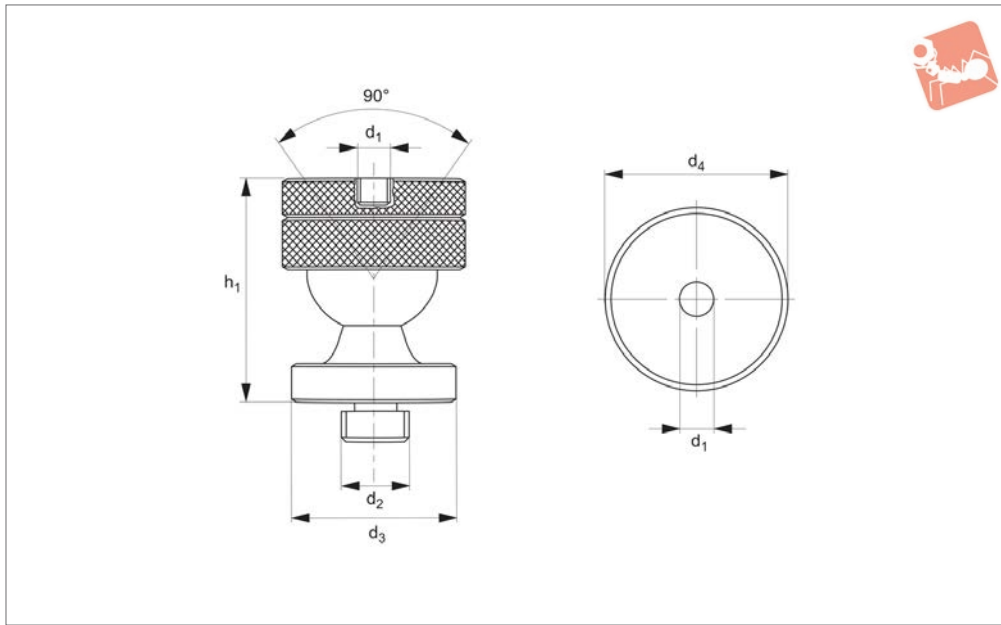
Material

Aluminium.

Important Notes

Allows for fine height adjustment during CMM probing.

Order No.	d_1	d_2	d_3	h_1 max.	h_2 stroke	l_1	Weight g
19352.W1945	M 8	M 8	19	44.5	8	6.4	88



19354

GAUGING & INSPECTION

Material

Ball: steel.

All other components: aluminium 6160.

Technical Notes

Pivots approximatively 45° from horizontal

in every direction.

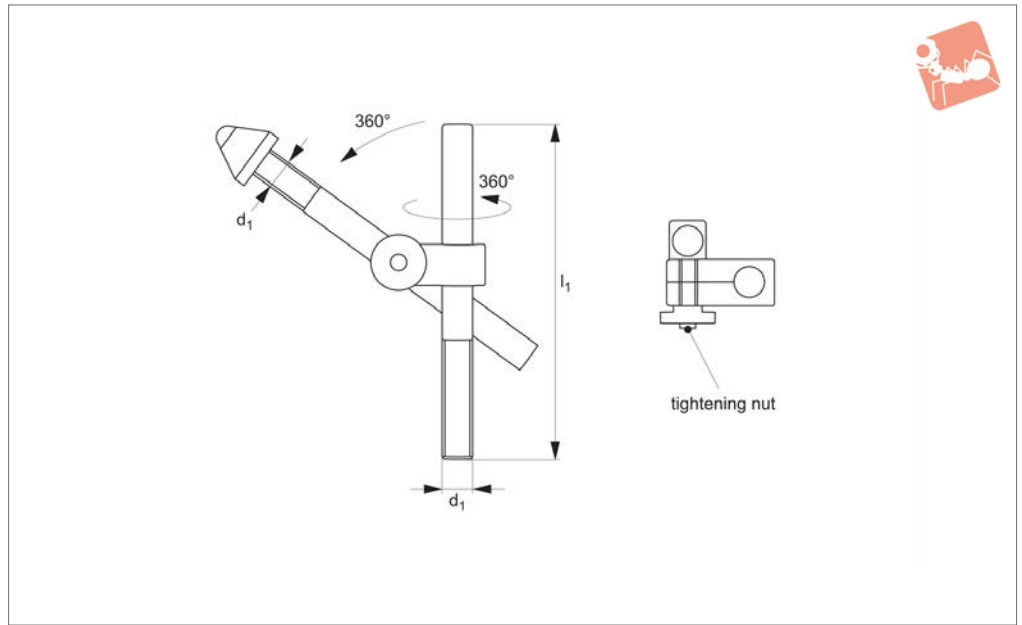
Important Notes

For holding parts at an angle. Collar easily tightens on ball at variable angles.

Order No.	d ₁	d ₂	d ₃	d ₄	h ₁	Weight g
19354.W2835	M 8	M 8	25	28.5	34	95



19358



Technical Notes

Fully articulated adjustable stop, rotates in 360° in both horizontal, vertical plains. Fully XYZ adjustable.

Important Notes

Rotates from side-to-side and up and down. Arm extends and retracts. Rotating arm features thermoplastic cone for posi-

tioning a part without marring its surface.

Order No.	d_1	l_1	Weight g
19358.W0008	M 8	100	134

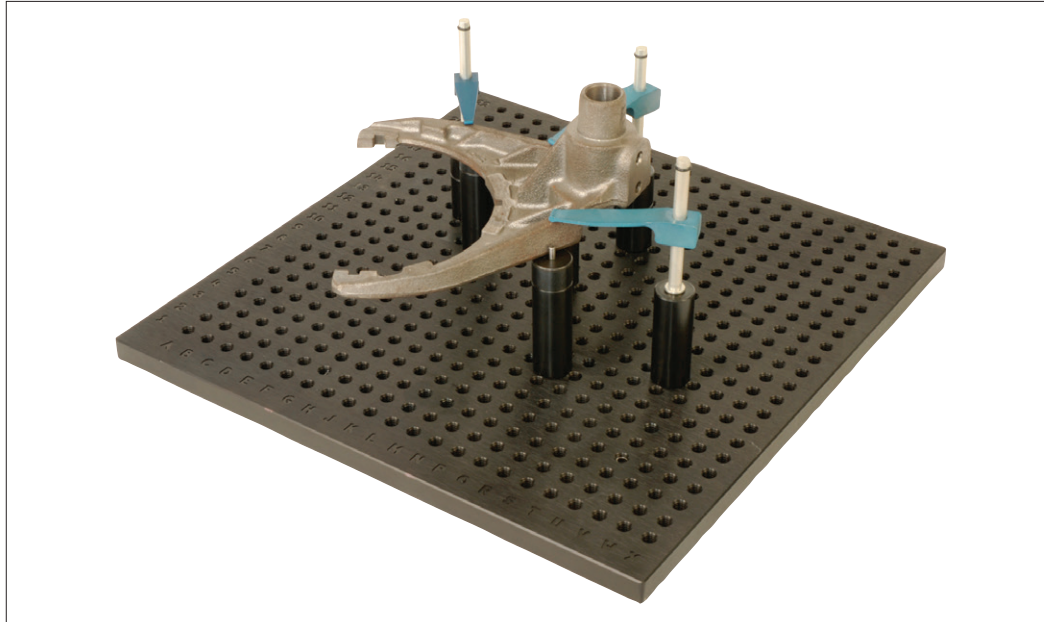


CMM Fixturing

modular approach, flexible system

19300 - 19370
Clamping & Height Setting

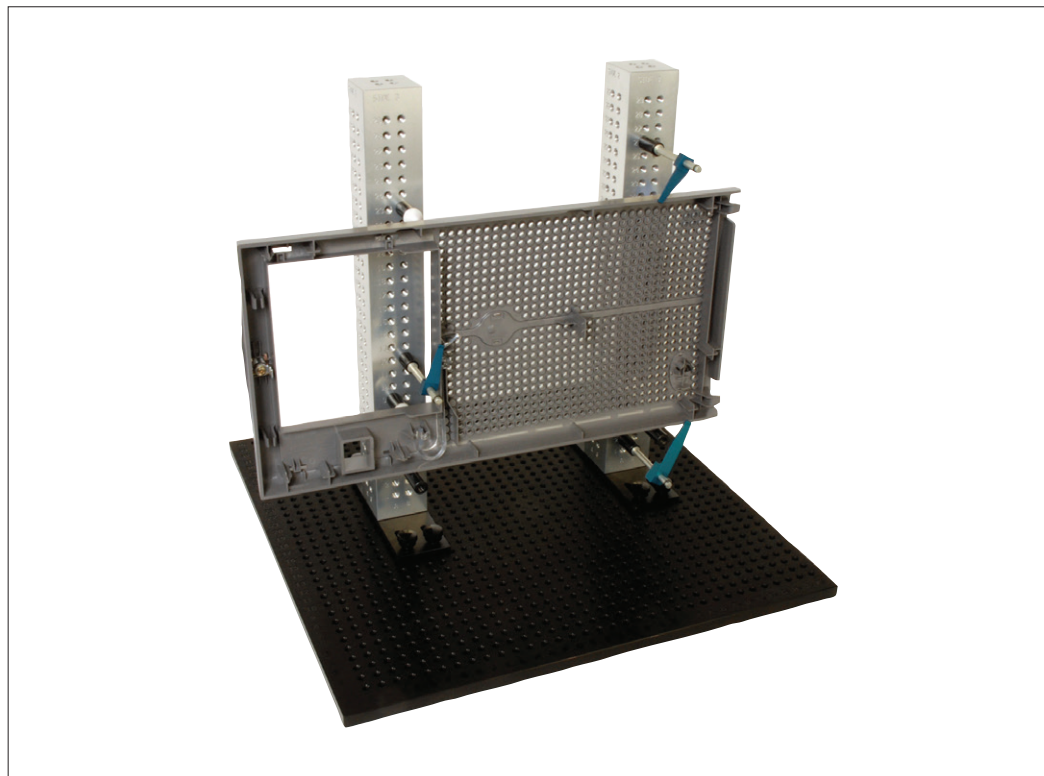
Wixroyd's CMM fixturing system is designed for easy assembly and high repeatability, eliminating the need to build dedicated fixtures. The system offers a highly accurate and flexible solution of holding parts while probing on CMMs.



Flexible

A variety of component parts as well as complete kits are available; to enable setup of fixtures in minutes.

GAUGING & INSPECTION



- Aluminium base plates – hole based system with alpha-numeric labelling for easy set-up and recording of fixture positions.
- Fixture towers – ideal for fixturing of large vertical components.
- Soft-touch clamps – non-marking clamps providing the ideal force for holding parts during CMM probing.
- Locating components – rest pads, vee pads for cylindrical parts, pin rests etc.

ov-W19300-A-T-W19370-A-T-CMM-Fixturing-a-rnh - Updated -24-10-2022