

91080

HEX KEYS & WRENCHES

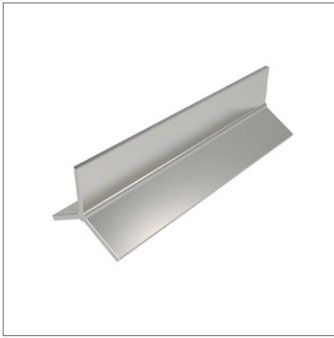
Material

Steel head and fins.
Red plastic handle.

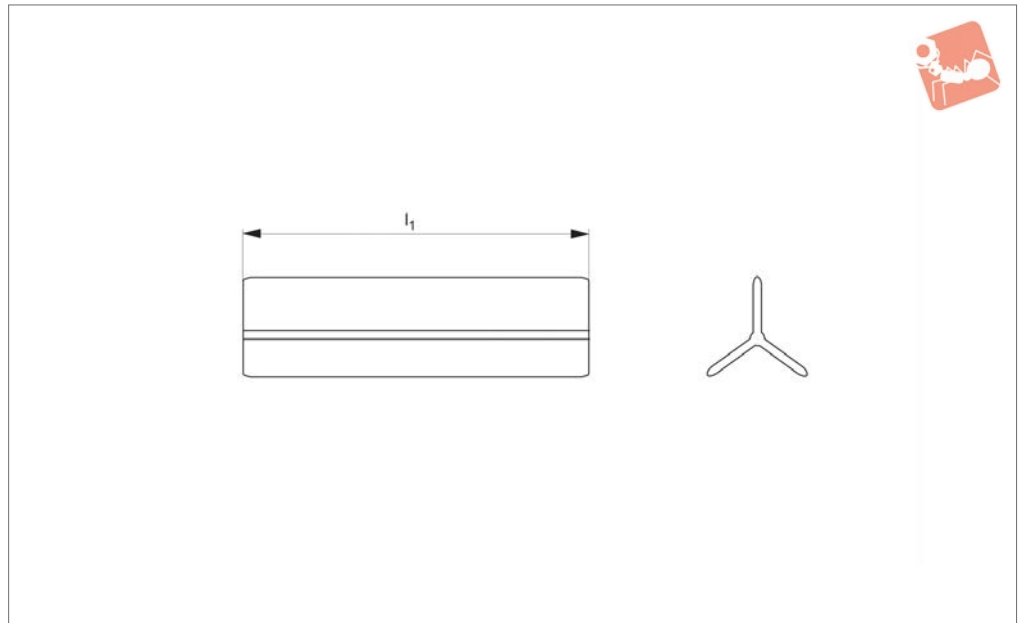
Technical Notes

Simplifies insertion and removal of collets
in the spindle nose on CNC lathes.

Order No.	Collet size	Fins	d ₁	d ₂	l ₁	l ₂	l ₃	w ₁	Weight g
91080.W0005	5C	3	31.8	27.9	109.2	12.7	7.6	7.6	159
91080.W0010	16C	3	44.5	27.9	109.2	12.7	7.6	7.6	277
91080.W0015	3J	4	44.5	27.9	109.2	12.7	7.6	7.6	281



91082



Material
Aluminium

Technical Notes
Front loading collet stop:
1. Cut stop to desired length.

2. Insert stop into collet slots, tighten, face off and deburr.
3. Remove and insert machined end into collet. Face off to desired length and deburr.

4. Seat into collet and clamp workpiece. Once seated the collet need not be removed for adjustment.

Self-centering and re-usable.

Order No.	Collet size	l_1	Weight g
91082.W0020	5C	610	168