

12550.1

ADJUSTABLE VERTICAL CLAMPS

Material

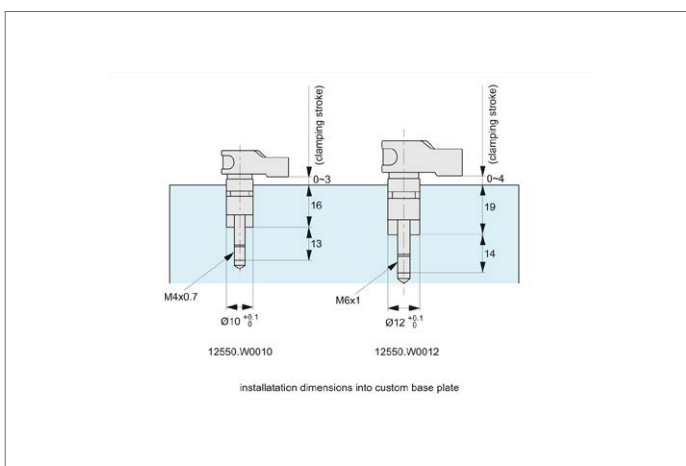
Steel (42CrMo), tempered, black oxide finish.

Technical Notes

Very useful for limited space vertical clamping, can be recessed into bores to mini-

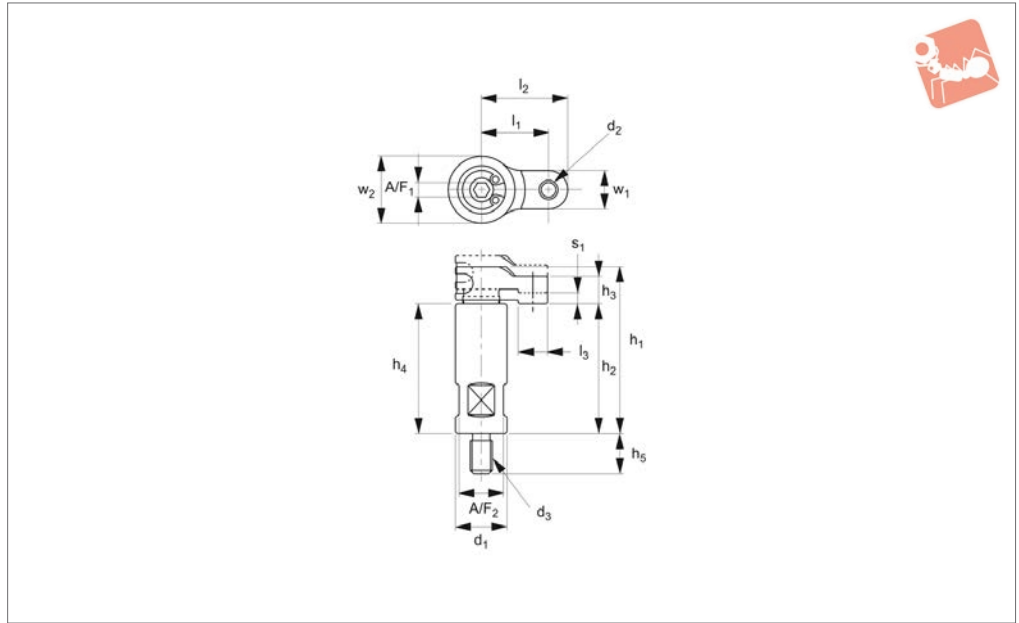
mise height. Clamping stroke (see diagram below) for M 4= 0-3mm, for M 6= 0-4mm.

Order No.	h_1	l_1	d_1 -0.02 -0.10	d_2	h_2	h_3	h_4	d_3	l_2	l_3	w_1	w_2	Torque to Nm max.	A/F	Clamping force kN max.	Weight g
12550.W0010	24,5	14	10	M 4x0,7	14,5	7,5	12,5	M 4x30	18	8	8	14	2,7	3	2,0	25
12550.W0012	30,5	17	12	M 5x0,8	17,5	9,5	13,5	M 6x35	22	10	10	16	7,0	5	3,5	45





12550.2



ADJUSTABLE VERTICAL CLAMPS

Material

Clamp body: steel (42CrMo), tempered, black oxide finish.

Holder: steel (C45), tempered, black oxide

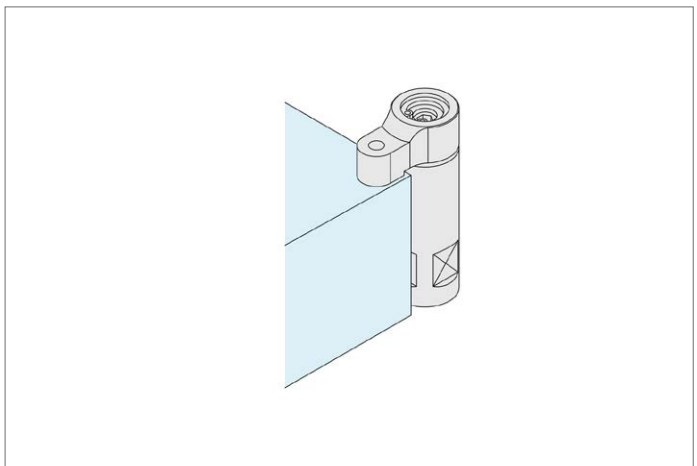
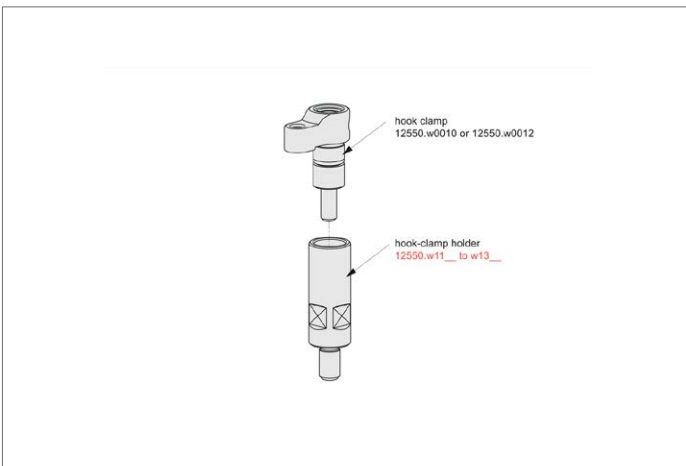
finish.

Technical Notes

The hook clamp is designed to move up and

down in conjunction with the tightening screw.

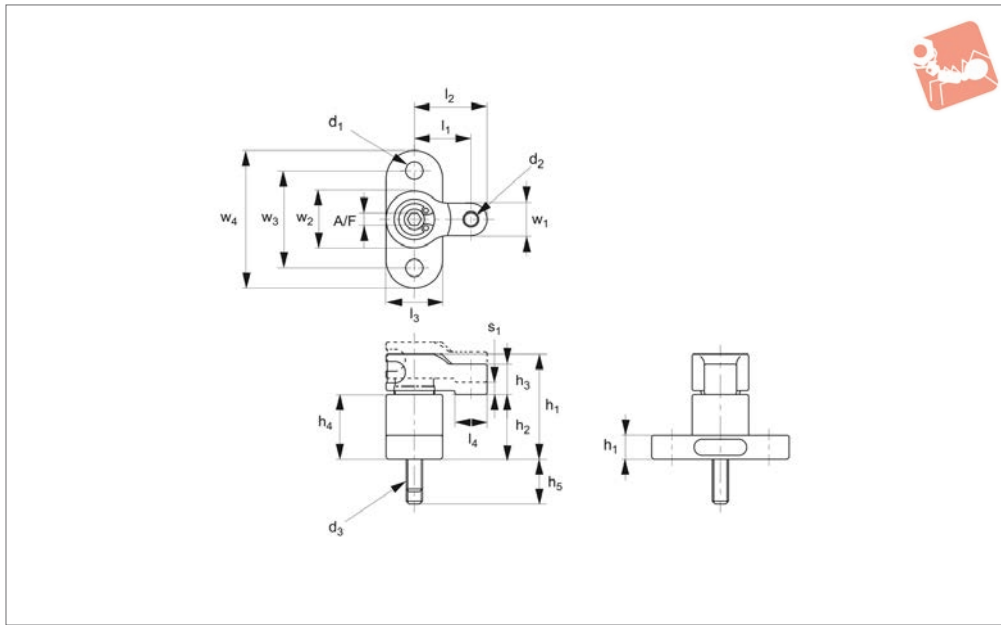
Order No.	h_1	Stroke s_1	l_1	d_1	d_2	h_2	h_3	h_4	h_5	d_3	w_1	w_2	A/F_1	A/F_2	Clamping force kN	Torque Nm max.	Weight g
12550.W0110	45	3	14	14	M 4x0,7	35	7,5	35	11	M 6x1	8	14	3	12	2,0	2,7	55
12550.W0112	53	4	17	16	M 5x0,8	40	9,5	40	14	M 8x1,25	10	16	5	13	3,5	7,0	90





Hook Clamp flanged

Adjustable Vertical Clamps



12550.3

ADJUSTABLE VERTICAL CLAMPS

Material

Steel (42CrMo), quenched and tempered, black oxide finish.
Holder: steel (C45), quenched and

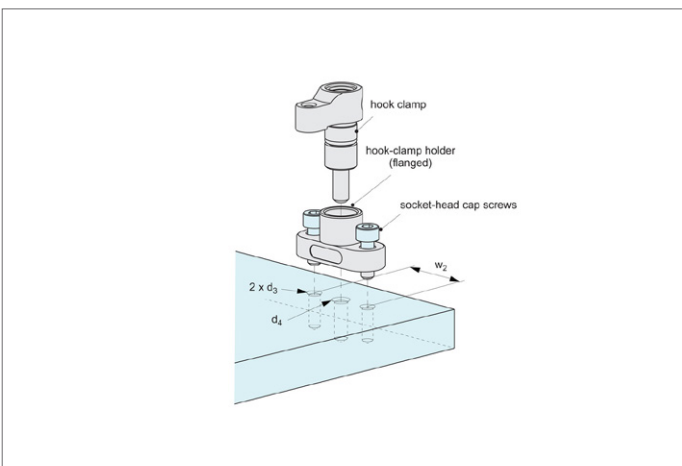
tempered, black oxide finish.

Technical Notes

Ideal for low height clamping.

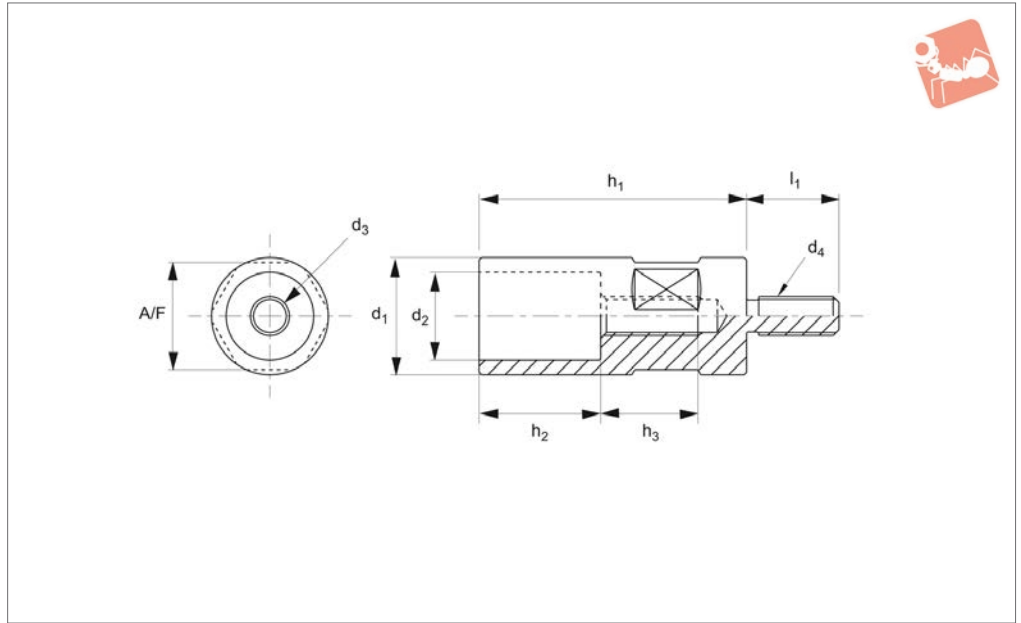
The hook clamp is designed to move up and down in conjunction with the tightening screw.

Order No.	h_1	Stroke s_1	l_1	d_1	d_2	h_2	h_3	h_4	h_5	d_3	l_2	l_3	w_1	w_2	w_3	w_4	Torque to Nm max.	A/F	Clamping force kN	Weight g
12550.W0210	6	3	14	4,3	M 4x0,7	16	7,5	16	11	M 4x30	18	14	8	14	24	34	2,7	3	2,0	45
12550.W0212	8	4	17	5,3	M 5x0,8	19	9,5	19	12	M 5x35	22	16	10	16	28	40	7,0	5	3,5	75





12550.4



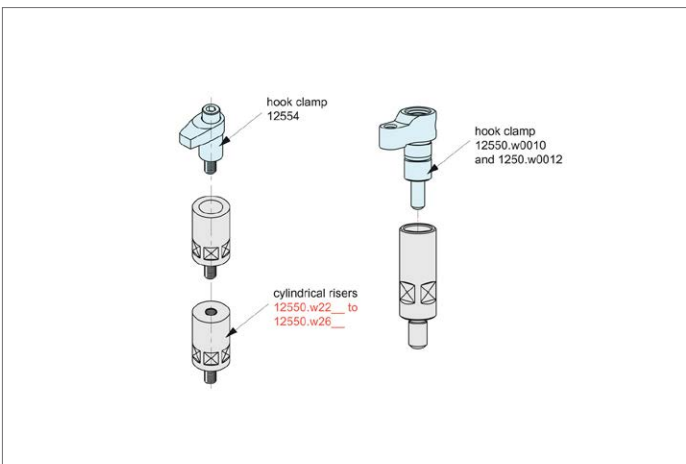
Material

Steel (C45), black oxide finish.

Tips

For use with hook clamps part no's 12550.
W0010- .W0012 and 12554.

Order No.	Hook clamp size dia.	h_1	l_1	d_1	d_2 tol. f7	h_2	h_3	d_3	d_4	Torque to Nm max.	A/F	Weight g
12550.W1101	10	35	11	14	10 ^{+0,1,0}	16	13	M 4x0,7	M 6x1	2.7	12	30
12550.W1121	12	40	14	16	12 ^{+0,1,0}	19	14	M 6x1	M 8x1,25	7.0	13	45
12550.W1181	18	55	19	24	18	25	20	M 8x1,25	M 8x1,25	30	22	140
12550.W1201	20	63	30	32	20	30	21	M10x1,5	M12x1,75	38	30	400
12550.W1202	20	80	30	32	20	30	23	M10x1,5	M12x1,75	38	30	500
12550.W1251	25	80	30	40	25	40	25	M12x1,75	M12x1,75	50	36	600
12550.W1252	25	100	30	40	25	40	25	M12x1,75	M12x1,75	50	36	800
12550.W1321	32	80	30	50	32	40	25	M16x2	M16x2	80	46	930
12550.W1322	32	100	30	50	32	40	25	M16x2	M16x2	80	46	1230

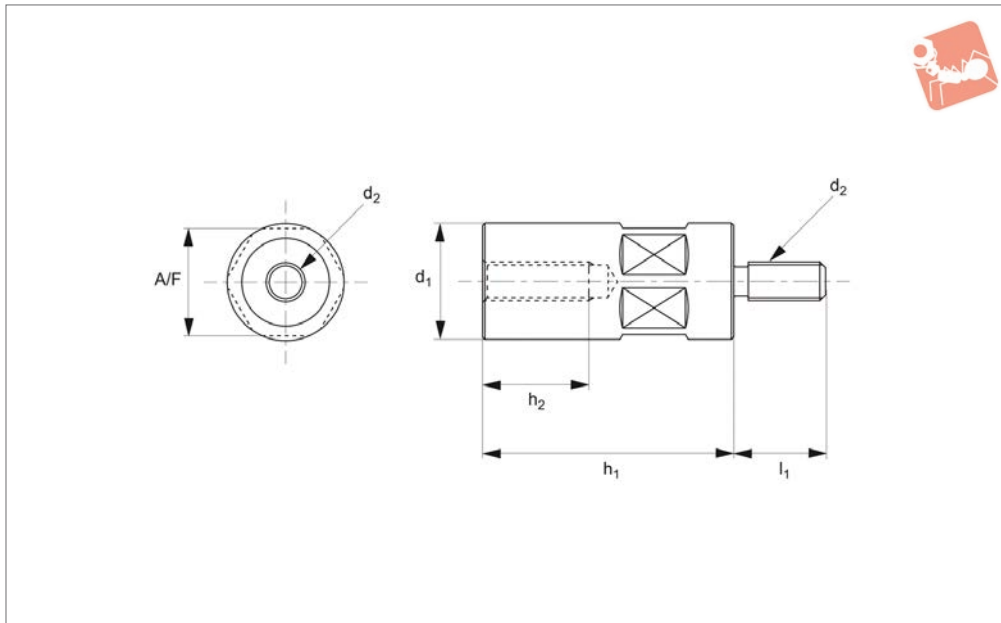




Hook Clamp Risers

cylindrical

Adjustable Vertical Clamps



12550.5

ADJUSTABLE VERTICAL CLAMPS

Material

Steel, heat treated and black oxide finish.

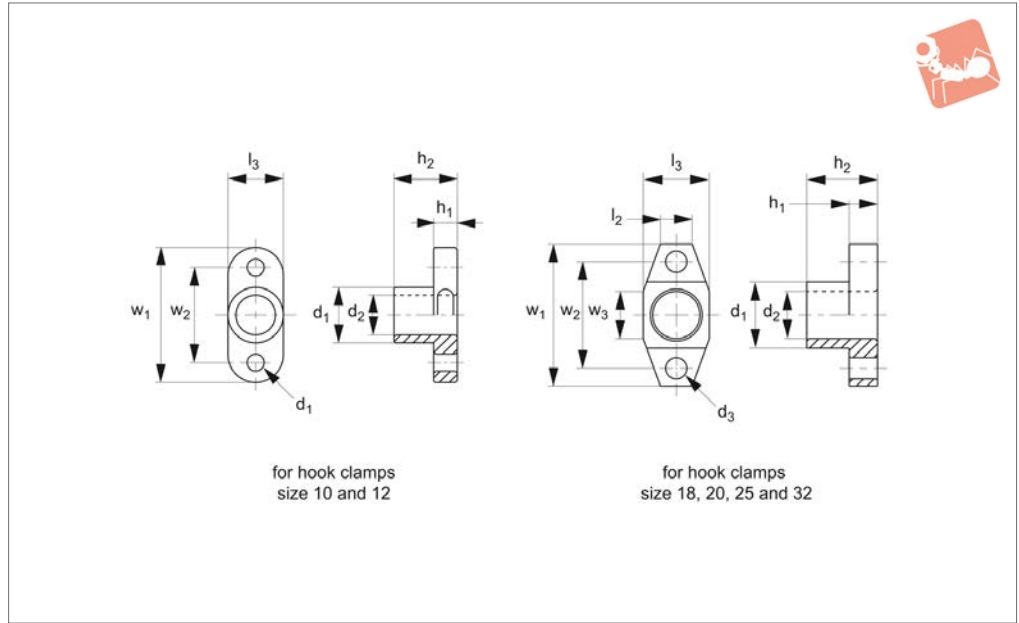
Technical Notes

For use with hook clamps 12550.

Order No.	h_1	l_1	d_1	d_2	h_2	A/F	Weight g
12550.W2241	32	19	24	M 8x1,25	20	22	105
12550.W2242	40	19	24	M 8x1,25	20	22	135
12550.W2243	50	19	24	M 8x1,25	20	22	170
12550.W2244	65	19	24	M 8x1,25	20	22	220
12550.W2401	50	30	40	M12x1,75	35	36	480
12550.W2402	65	30	40	M12x1,75	35	36	640
12550.W2403	80	30	40	M12x1,75	35	36	740
12550.W2404	100	30	40	M12x1,75	35	36	940
12550.W2405	125	30	40	M12x1,75	35	36	1230
12550.W2406	160	30	40	M12x1,75	35	36	1570
12550.W2407	200	30	40	M12x1,75	35	36	1970
12550.W2501	50	30	50	M16x2	35	46	770
12550.W2502	65	30	50	M16x2	35	46	1000
12550.W2503	80	30	50	M16x2	35	46	1160
12550.W2504	100	30	50	M16x2	35	46	1470
12550.W2505	125	30	50	M16x2	35	46	1920
12550.W2601	160	30	60	M16x2	35	55	3490
12550.W2602	200	30	60	M16x2	35	55	4370



12550.6



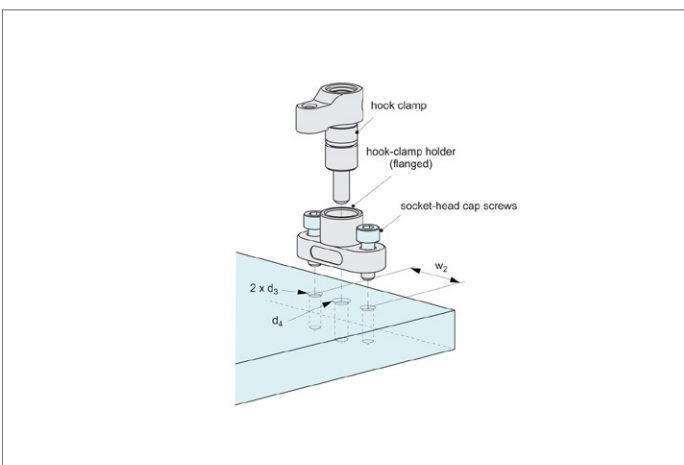
Material

Steel (C45), black oxide finish, tempered - 12550.W3100 and 12550.W3120).

Technical Notes

For use with hook clamps part no's 12550. W0010- .W0012 and 12554.

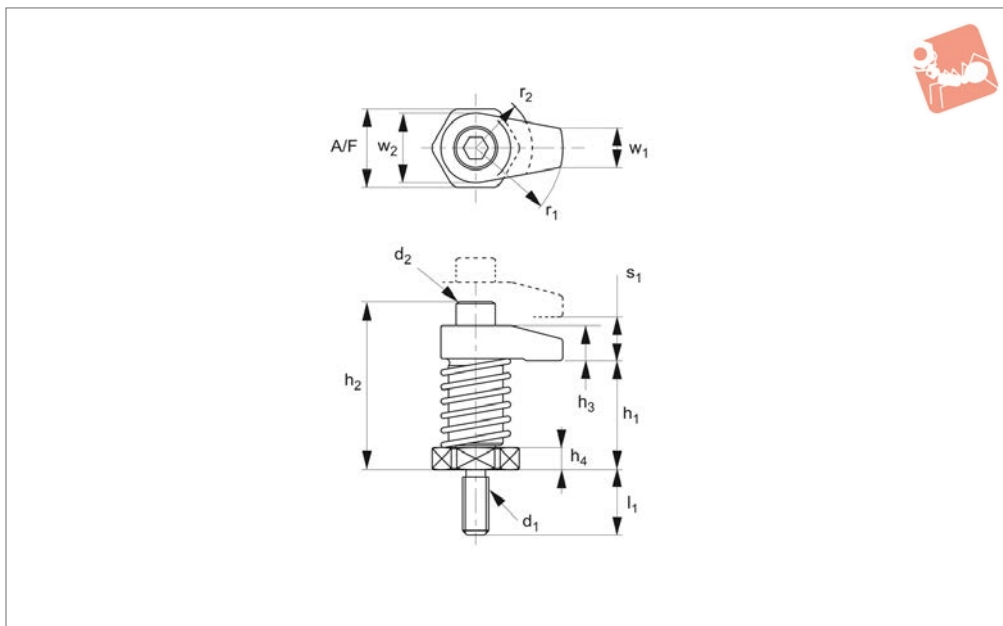
Order No.	Hook clamp size dia.	h_1	l_1	d_1	d_2 tol. f7	h_2	d_3	l_2	w_1	w_2	w_3	Weight g
12550.W3100	10	6	-	14	$10^{+0,1}$	16	4,3 (M 4)	14	34	24	-	20
12550.W3120	12	8	-	16	$12^{+0,1}$	19	5,3 (M 5)	16	40	28	-	30
12550.W3180	18	10	11.3	24	18	25	6,6 (M 6)	24	50	38	15	85
12550.W3200	20	12	13.4	28	20	30	9,0 (M 8)	28	60	45	20	150
12550.W3250	25	14	15.0	35	25	40	11,0 (M10)	35	75	55	20	290
12550.W3320	32	16	20.2	42	32	40	13,0 (M12)	41	85	65	25	400





Hook Clamps spring loaded

Adjustable Vertical Clamps



12552

ADJUSTABLE VERTICAL CLAMPS

Material

Steel (35CrMo), heat treated, black oxide finish, precision ground.

ping height.

Tips

Please apply grease to sliding surface.

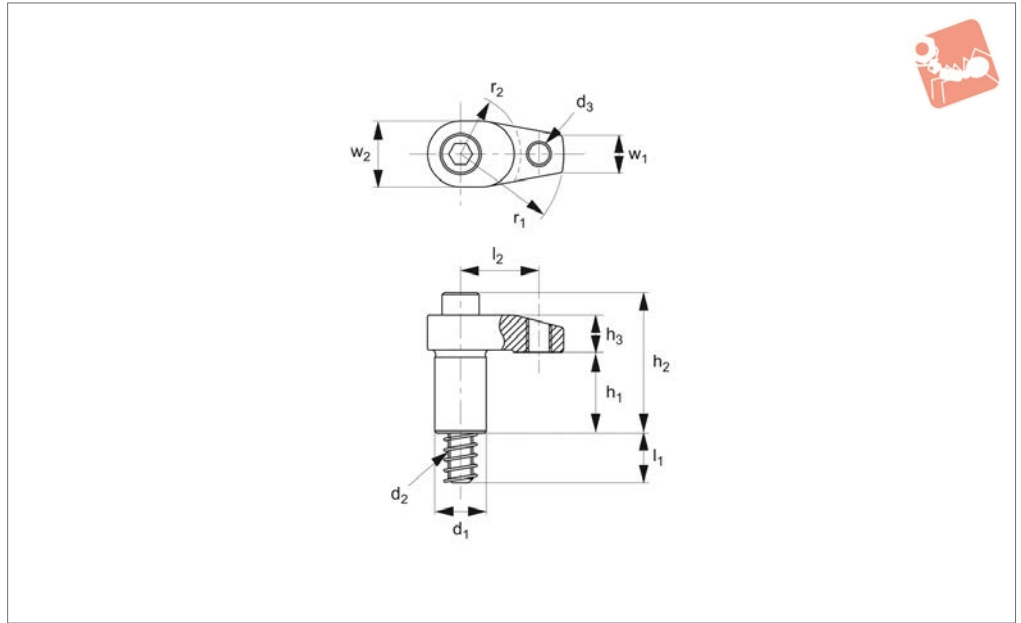
Technical Notes

Cylindrical risers can be used to raise clam-

Order No.	h_1	Stroke s_1	l_1	d_1	d_2	h_2	h_3	h_4	w_1	w_2	r_1	r_2	Torque to Nm max.	A/F	Clamping force kN	Weight g
12552.W0221	35	10	19	M 8x1,25	M 8x30	49	12	6	10	22	20	15	20	22	7.9	125
12552.W0222	35	10	19	M 8x1,25	M 8x30	49	12	6	10	22	25	15	20	22	7.3	130
12552.W0223	35	10	19	M 8x1,25	M 8x30	49	12	6	10	22	30	15	20	22	6.7	135
12552.W0224	45	10	19	M 8x1,25	M 8x30	59	12	16	10	22	20	15	20	22	7.9	160
12552.W0225	45	10	19	M 8x1,25	M 8x30	59	12	16	10	22	25	15	20	22	7.3	165
12552.W0226	45	10	19	M 8x1,25	M 8x30	59	12	16	10	22	30	15	20	22	6.7	170
12552.W0321	50	15	30	M12x1,7 5	M12x4 5	77	16	10	18	32	40	26	45	36	13.5	450
12552.W0322	50	15	30	M12x1,7 5	M12x4 5	79	16	10	18	32	50	26	45	36	12.6	480
12552.W0323	50	15	30	M12x1,7 5	M12x4 5	79	16	10	18	32	60	26	45	36	11.7	520
12552.W0324	65	15	30	M12x1,7 5	M12x4 5	92	16	25	18	32	40	26	45	36	13.5	600
12552.W0325	65	15	30	M12x1,7 5	M12x4 5	94	18	25	18	32	50	26	45	36	12.6	630
12552.W0326	65	15	30	M12x1,7 5	M12x4 5	94	18	25	18	32	60	26	45	36	11.7	670
12552.W0361	50	15	30	M16x2	M16x5 5	86	21	10	22	36	40	26	60	36	13.4	630
12552.W0362	50	15	30	M16x2	M16x5 5	86	21	10	22	36	50	26	60	36	12.4	680
12552.W0363	50	15	30	M16x2	M16x5 5	86	21	10	22	36	60	26	60	36	12.0	740
12552.W0364	65	15	30	M16x2	M16x5 5	101	21	25	22	36	40	26	60	36	13.4	780
12552.W0365	65	15	30	M16x2	M16x5 5	101	21	25	22	36	50	26	60	36	12.4	830
12552.W0366	65	15	30	M16x2	M16x5 5	101	21	25	22	36	60	26	60	36	12.0	890



12554



ADJUSTABLE VERTICAL CLAMPS

Material

Steel (C45), tempered and black oxide finish, precision ground.

prevent galling when using in dry condition.

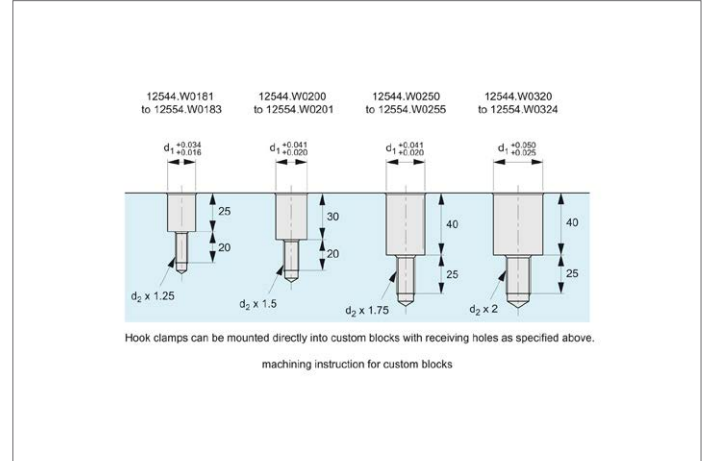
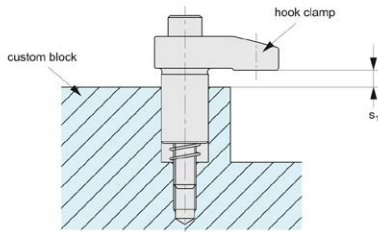
Can be used with clamping holders

12550.4. and cylindrical risers 12550.5.

Tips

Please apply grease on sliding surface to

Order No.	h_1	Stroke s_1	l_1	d_1 tol. h7	d_2	h_2	h_3	d_3	l_2	w_1	w_2	r_1	r_2	Torque to Clamping force Nm max. kN	Weight g	
12554.W0181	23	10	21	18	M 8x50	37	12			10	22	20	15	38	15	90
12554.W0182	23	10	21	18	M 8x50	37	12			10	22	25	15	33	12	100
12554.W0183	23	10	21	18	M 8x50	37	12			10	22	30	20	30	10	105
12554.W0200	30	12	21	20	M10x65	54	15			12	25	30	20	38	13	165
12554.W0201	30	12	21	20	M10x65	54	15			12	25	40	25	32	10	180
12554.W0250	39	15	26	25	M12x80	66	16			18	32	40	25	60	18	305
12554.W0251	39	15	24	25	M12x80	68	18			18	32	50	25	50	14	360
12554.W0252	39	15	24	25	M12x80	68	18			18	32	60	25	46	12	380
12554.W0253	39	15	26	25	M12x80	66	16	M12x1,75	31	18	32	40	25	60	18	295
12554.W0254	39	15	24	25	M12x80	68	18	M12x1,75	38	18	32	50	25	50	14	350
12554.W0255	39	15	24	25	M12x80	68	18	M12x1,75	46	18	32	60	25	46	12	370
12554.W0320	39	15	26	32	M16x85	75	21			22	36	40	25	170	38	530
12554.W0321	39	15	26	32	M16x85	75	21			22	36	50	25	150	31	580
12554.W0322	39	15	26	32	M16x85	75	21			22	36	60	25	130	26	625
12554.W0323	39	15	26	32	M16x85	75	21	M12x1,75	38	22	36	50	25	150	31	565
12554.W0324	39	15	26	32	M16x85	75	21	M12x1,75	46	22	36	60	25	130	26	610



ADJUSTABLE VERTICAL CLAMPS