

## 12562.1

ADJUSTABLE VERTICAL CLAMPS

### Material

Body, handle, clamping spindle: steel (C45), tempered and black oxide finish.  
Arm, cam shaft: steel (42CrMo4), tempered

and black oxide finish.  
Knob: phenolic plastic, black.

### Tips

Rough surface contact. Can be supplied with nickel-plated finish on request. Clamping height can be adjusted. Values in

Order No.	Clamping direction	Clamping height finished surface min.	Clamping height finished surface max.	Clamping height rough surface min.	Clamping height rough surface max.	h <sub>1</sub>	h <sub>2</sub>	h <sub>3</sub>	h <sub>4</sub>	h <sub>5</sub>	h <sub>6</sub>	l <sub>1</sub>	l <sub>2</sub>	Weight g
12562.W0030	Clockwise	22,8 (22,3~23)	24,8 (24,3~25)	22,4 (21,9~22)	24,4 (23,9~24)	49	45.8	30	10	22.8	6	18	26	112
12562.W0040	Clockwise	31,3 (30,6~32,0)	31,3 (30,6~32,0)	32,2 (31,5~32,9)	34,2 (33,5~34,9)	66	61.3	40	14	28.5	8	23	35	250
12562.W0050	Clockwise	32,5 (31,7~33,2)	39,0 (38,2~39,7)	33,5 (32,7~34,2)	40,0 (39,2~40,7)	82	76.5	50	18	45.5	12	30	45	570
12562.W0060	Clockwise	36,5 (35,5~37,4)	46,0 (45,0~46,9)	39,0 (38,0~39,9)	48,5 (47,5~49,4)	100	93.0	60	22	57.0	15	40	55	1200
12562.W0031	Anti-Clockwise	22,8 (22,3~23,3)	24,8 (24,3~25,3)	22,4 (21,9~22,9)	24,4 (23,9~24,9)	49	45.8	30	10	22.8	6	18	26	112
12562.W0041	Anti-Clockwise	31,3 (30,6~32,0)	33,3 (32,6~34,0)	32,2 (31,5~32,9)	34,2 (33,5~34,9)	66	61.3	40	14	28.5	8	23	35	250
12562.W0051	Anti-Clockwise	32,5 (31,7~33,2)	39,0 (38,2~39,7)	33,5 (32,7~34,2)	40,0 (39,2~40,7)	82	76.5	50	18	45.5	12	30	45	570
12562.W0061	Anti-Clockwise	36,5 (35,5~37,4)	46,0 (45,0~46,9)	39,0 (38,0~39,9)	48,5 (47,5~49,4)	100	93.0	60	22	57.0	15	40	55	1200

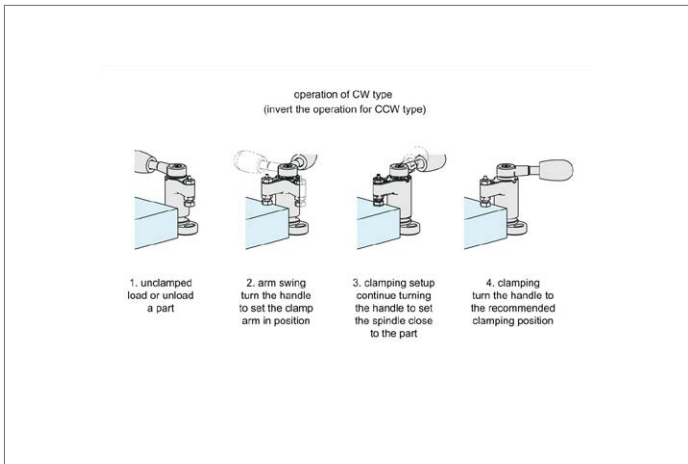
# Adjustable Vertical Clamps

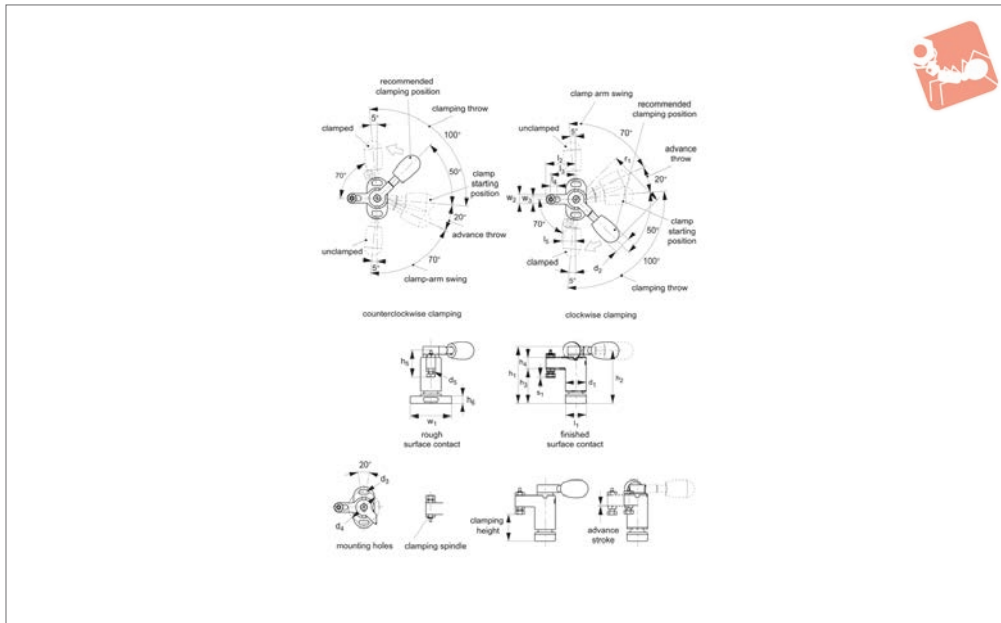
# Swing Clamps



ADJUSTABLE VERTICAL CLAMPS

Order No.	$l_3$	$l_4$	$l_5$	$d_1$	$d_2$	$d_3$	$d_4$	$d_5$	$r_1$	$w_1$	$w_2$	$w_3$	Clamping force kN	Clamping mechanism	Clamping stroke $s_1$	Advance stroke $s_2$	Operating load N max.
<b>12562.W0030</b>	22	6	11.5	18	15	4.3	27	M 4x0,70	50	36	8	4.3	1.1	Spiral Cam, 5°	1.0	0.8	100
<b>12562.W0040</b>	30	8	15.3	23	20	5.3	34	M 5x0,80	63	45	10	5.3	1.8	Spiral Cam, 5°	1.4	1.1	150
<b>12562.W0050</b>	37	8	20.7	30	26	8.4	48	M 8x1,25	80	65	16	8.4	2.2	Spiral Cam, 4°	1.5	1.4	200
<b>12562.W0060</b>	45	8	25.4	40	33	10.5	64	M10x1,50	100	85	20	10.4	3.5	Spiral Cam, 4°	1.9	1.7	300
<b>12562.W0031</b>	22	6	11.5	18	15	4.3	27	M 4x0,70	50	36	8	4.3	1.1	Spiral Cam, 5°	1.0	0.8	100
<b>12562.W0041</b>	30	8	15.3	23	20	5.3	34	M 5x0,80	63	45	10	5.3	1.8	Spiral Cam, 5°	1.4	1.1	150
<b>12562.W0051</b>	37	8	20.7	30	26	8.4	48	M 8x1,25	80	65	16	8.4	2.2	Spiral Cam, 4°	1.5	1.4	200
<b>12562.W0061</b>	45	8	25.4	40	33	10.5	64	M10x1,50	100	85	20	10.4	3.5	Spiral Cam, 4°	1.9	1.7	300





## 12562.2

ADJUSTABLE VERTICAL CLAMPS

### Material

Body, handle, clamping spindle: steel (C45), quenched and tempered, electroless nickel plated.  
 Arm, cam shaft: steel (42CrMo4), quenched

and tempered, electroless nickel plated.  
 Knob: phenolic plastic, black.

parenthesised values denote clamping height range.

### Tips

Clamping height can be adjusted. The

Order No.	Clamping direction	Clamping height finished surface min.	Clamping height finished surface max.	Clamping height rough surface min.	Clamping height rough surface max.	h <sub>1</sub>	h <sub>2</sub>	h <sub>3</sub>	h <sub>4</sub>	h <sub>5</sub>	h <sub>6</sub>	l <sub>1</sub>	l <sub>2</sub>	Weight g
12562.W0330	Clockwise	22,8 (22,3~23,3)	24,8 (24,3~25,3)	22,4 (21,9~22,9)	24,4 (23,9~24,9)	49	45.8	30	10	22.8	6	18	26	112
12562.W0340	Clockwise	31,3 (30,6~32,0)	33,3 (32,6~34,0)	32,2 (31,5~32,9)	34,2 (33,5~34,9)	66	61.3	40	14	28.5	8	23	35	250
12562.W0350	Clockwise	32,5 (31,7~33,2)	39,0 (38,2~39,7)	33,5 (32,7~34,2)	40,0 (39,2~40,7)	82	76.5	50	18	45.5	12	30	45	570
12562.W0360	Clockwise	36,5 (35,5~37,4)	46,0 (45,0~46,9)	39,0 (38,0~39,9)	48,5 (47,5~49,4)	100	93.0	60	22	57.0	15	40	55	1200
12562.W0331	Counter Clockwise	22,8 (22,3~23,3)	24,8 (24,3~25,3)	22,4 (21,9~22,9)	24,4 (23,9~24,9)	49	45.8	30	10	22.8	6	18	26	112
12562.W0341	Counter Clockwise	31,3 (30,6~32,0)	33,3 (32,6~34,0)	32,2 (31,5~32,9)	34,2 (33,5~34,9)	66	61.3	40	14	28.5	8	23	35	250
12562.W0351	Counter Clockwise	32,5 (31,7~33,2)	39,0 (38,2~39,7)	33,5 (32,7~34,2)	40,0 (39,2~40,7)	82	76.5	50	18	45.5	12	30	45	570

# Adjustable Vertical Clamps

# Swing Clamps

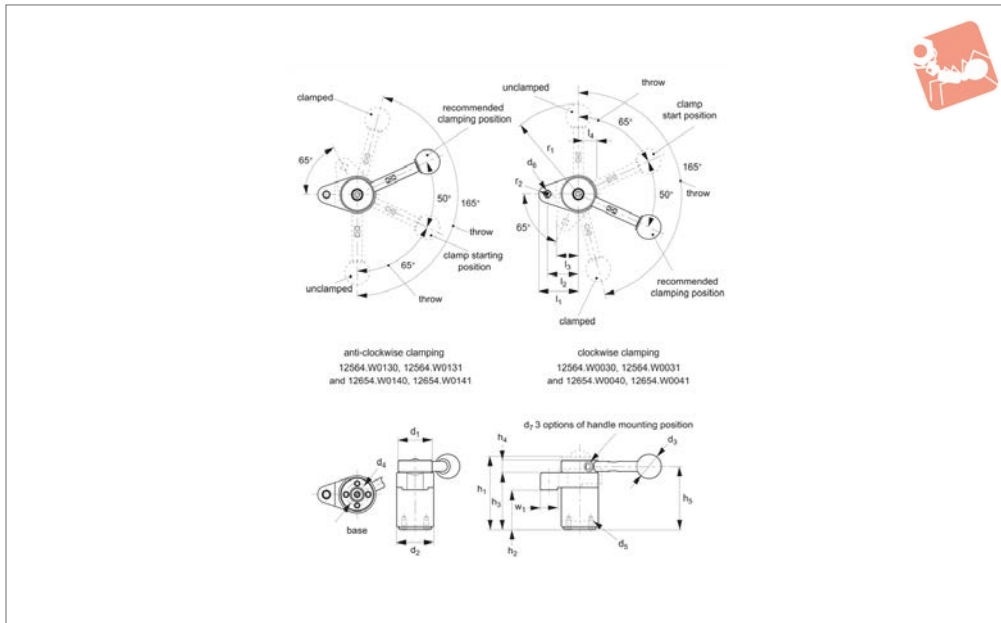


ADJUSTABLE VERTICAL CLAMPS

Order No.	Clamping direction	Clamping height finished surface min.	Clamping height finished surface max.	Clamping height rough surface min.	Clamping height rough surface max.	$h_1$	$h_2$	$h_3$	$h_4$	$h_5$	$h_6$	$l_1$	$l_2$	Weight g
<b>12562.W0361</b>	Counter Clockwise	36,5 (35,5~37,4)	46,0 (45,0~46,9)	39,0 (38,0~39,9)	48,5 (47,5~49,4)	100	93.0	60	22	57.0	15	40	55	1200

Order No.	$l_3$	$l_4$	$l_5$	$d_1$	$d_2$	$d_3$	$d_4$	$d_5$	$r_1$	$w_1$	$w_2$	$w_3$	Clamping force kN max.	Clamping mechanism	Clamping stroke $s_1$	Advance stroke $s_2$	Operating load N max.
<b>12562.W0330</b>	22	6	11.5	18	15	4.3	27	M 4x0,70	50	36	8	4.3	1.1	Spiral Cam, Cam Angle 5°	1.0	0.8	100
<b>12562.W0340</b>	30	8	15.3	23	20	5.3	34	M 5x0,80	63	45	10	5.3	1.8	Spiral Cam, Cam Angle 5°	1.4	1.1	150
<b>12562.W0350</b>	37	8	20.7	30	26	8.4	48	M 8x1,25	80	65	16	8.4	2.2	Spiral Cam, Cam Angle 5°	1.5	1.4	200
<b>12562.W0360</b>	45	8	25.4	40	33	10.5	64	M1 0x1,50	100	85	20	10.4	3.5	Spiral Cam, Cam Angle 4°	1.9	1.7	300
<b>12562.W0331</b>	22	6	11.5	18	15	4.3	27	M 4x0,70	50	36	8	4.3	1.1	Spiral Cam, Cam Angle 5°	1.0	0.8	100
<b>12562.W0341</b>	30	8	15.3	23	20	5.3	34	M 5x0,80	63	45	10	5.3	1.8	Spiral Cam, Cam Angle 5°	1.4	1.1	150
<b>12562.W0351</b>	37	8	20.7	30	26	8.4	48	M 8x1,25	80	65	16	8.4	2.2	Spiral Cam, Cam Angle 4°	1.5	1.4	200
<b>12562.W0361</b>	45	8	25.4	40	33	10.5	64	M1 0x1,50	100	85	20	10.4	3.5	Spiral Cam, Cam Angle 4°	1.9	1.7	300



## 12564.1

ADJUSTABLE VERTICAL CLAMPS

### Material

Body, shaft: steel (42CrMo), tempered and black oxide finish.  
 Clamp arm, adaptor head: steel (C45), tempered and black oxide finish.  
 Handle: steel (C45), black oxide finish.  
 Ball knob: ABS resin, black.

### Technical Notes

When installing a pad on the clamp arm, lock the clamp arm using a wrench to prevent the clamp from receiving any torque.  
 Clamping height can be adjusted. The values in brackets shows clamping height range.

range.

### Tips

For parts 12564.W0031, 12564.W0131, 12564.W0041 and 12564.W0141 the handle must be ordered separately.

Order No.	Clamping direction	Type	$h_1$	$h_2$	$h_3$	$h_4$	$h_5$	$l_1$	$l_2$	$l_3$	Weight g
12564.W0030	Clockwise	With handle	57.5	32 (31,4~32,6)	46	10	51.0	32	25	17.5	320
12564.W0040	Clockwise	With handle	78.1	45 (44,1~45,9)	63	13	69.5	40	32	21.5	710
12564.W0031	Clockwise	Without handle	57.5	32 (31,4~32,6)	46	10	51.0	32	25	17.5	295
12564.W0041	Clockwise	Without handle	78.1	45 (44,1~45,9)	63	13	69.5	40	32	21.5	660
12564.W0130	Anti Clockwise	With handle	57.5	32 (31,4~32,6)	46	10	51.0	32	25	17.5	320
12564.W0140	Anti Clockwise	With handle	78.1	45 (44,1~45,9)	63	13	69.5	40	32	21.5	710
12564.W0131	Anti Clockwise	Without handle	57.5	32 (31,4~32,6)	46	10	51.0	32	25	17.5	295
12564.W0141	Anti Clockwise	Without handle	78.1	45 (44,1~45,9)	63	13	69.5	40	32	21.5	660

Order No.	$l_4$	$d_1$	$d_2$	$d_3$	$d_4$	$d_5$	$d_6$	$d_7$	$r_1$	$r_2$	$w_1$	Clamping force kN max.	Clamping mechanism	Handle load N max.
12564.W0030	15	30	30	20	18	M 4x0,7 Depth 8M	6x1,0M	5x0,8	73	7	14	0.8	Spiral Cam, 4°	150
12564.W0040	20	40	38	25	25	M 6x1,0 Depth 12	M 8x1,2M	6x1,0	107	8	16	1.2	Spiral Cam, 4°	200
12564.W0031	15	30	30	20	18	M 4x0,7 Depth 8M	6x1,0M	5x0,8	73	7	14	0.8	Spiral Cam, 4°	150
12564.W0041	20	40	38	25	25	M 6x1,0 Depth 12	M 8x1,2M	6x1,0	107	8	16	1.2	Spiral Cam, 4°	200
12564.W0130	15	30	30	20	18	M 4x0,7 Depth 8M	6x1,0M	5x0,8	73	7	14	0.8	Spiral Cam, 4°	150
12564.W0140	20	40	38	25	25	M 6x1,0 Depth 12	M 8x1,2M	6x1,0	107	8	16	1.2	Spiral Cam, 4°	200

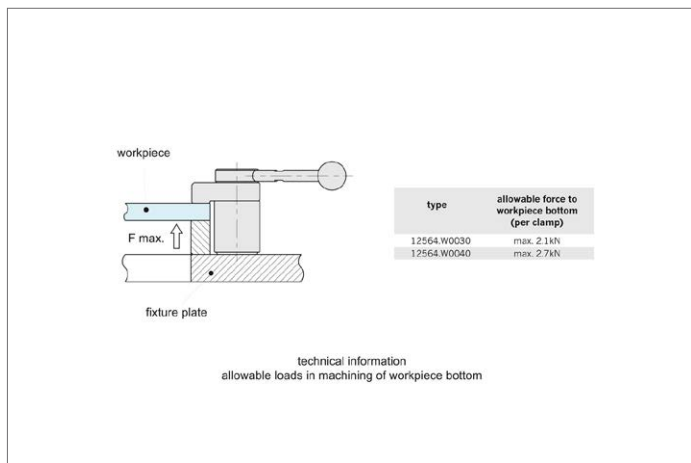
# Adjustable Vertical Clamps

# Swing Clamps



ADJUSTABLE VERTICAL CLAMPS

Order No.	$l_4$	$d_1$	$d_2$	$d_3$	$d_4$	$d_5$	$d_6$	$d_7$	$r_1$	$r_2$	$w_1$	Clamping force kN max.	Clamping mechanism	Handle load N max.	
<b>12564.W0131</b>	15	30	30	20	18	M 4x0,7	Depth 8M	6x1,0M	5x0,8	73	7	14	0.8	Spiral Cam, 4°	150
<b>12564.W0141</b>	20	40	38	25	25	M 4x1,0	Depth 8M	8x1,2M	6x1,0	107	8	16	1.2	Spiral Cam, 4°	200

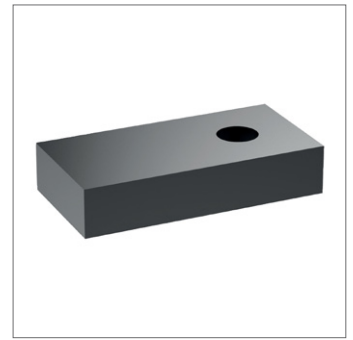
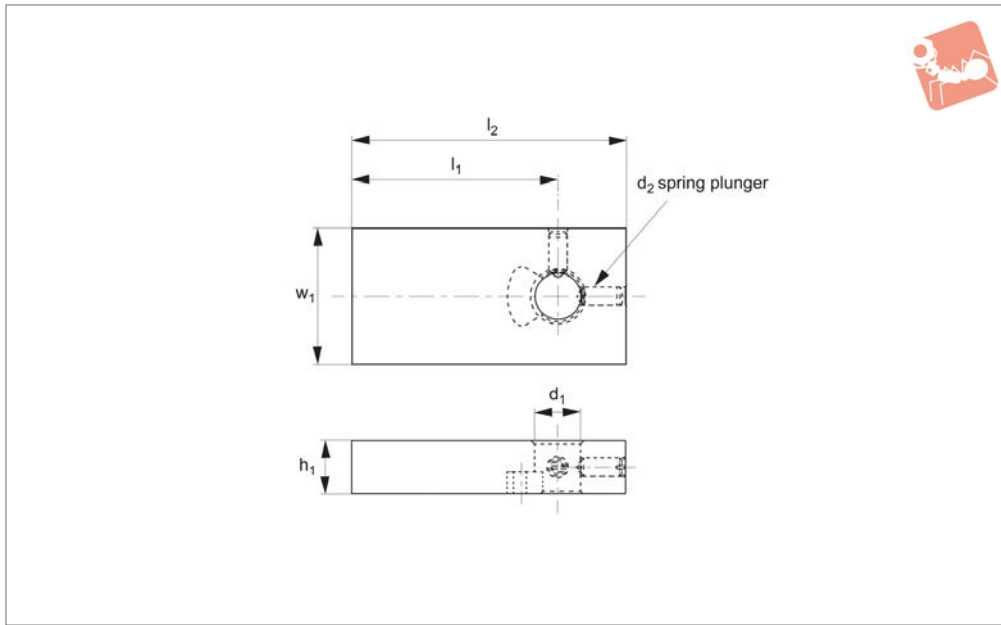




# Machinable Clamp Arms

for use with 12564.W0030 - .W0141

# Adjustable Vertical Clamps



## 12564.2

ADJUSTABLE VERTICAL CLAMPS

### Material

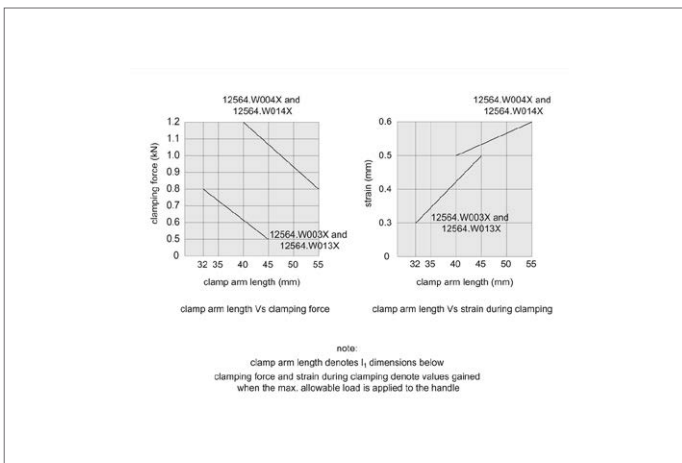
Steel (C45), black oxide finish.

### Technical Notes

Clamp arm length denotes  $l_1$  dimensions.

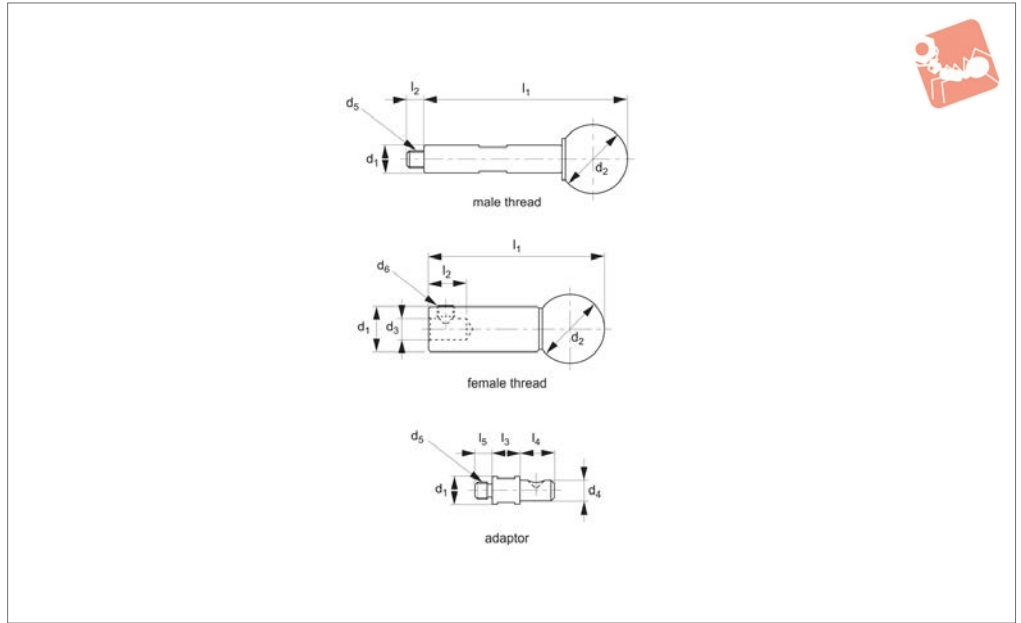
Clamping force and strain during clamping denote values gained when the maximum allowable load is applied to the handle.

Order No.	$h_1$	$l_1$	$l_2$	$d_1$	$d_2$	$w_1$	To suit clamp 12564	Weight of clamping prd. g max.	Weight g
12564.W0430	12	45	60	10	M 4	30	.W003x and .W013x	100	150
12564.W0440	16	55	75	16	M 5	40	.W004x and .W014x	100	330





## 12564.3



ADJUSTABLE VERTICAL CLAMPS

### Material

Handle: steel (C45), black oxide finish.  
Ball knob: ABS resin, black.

Shaft: steel (C45), tempered and black oxide finish.

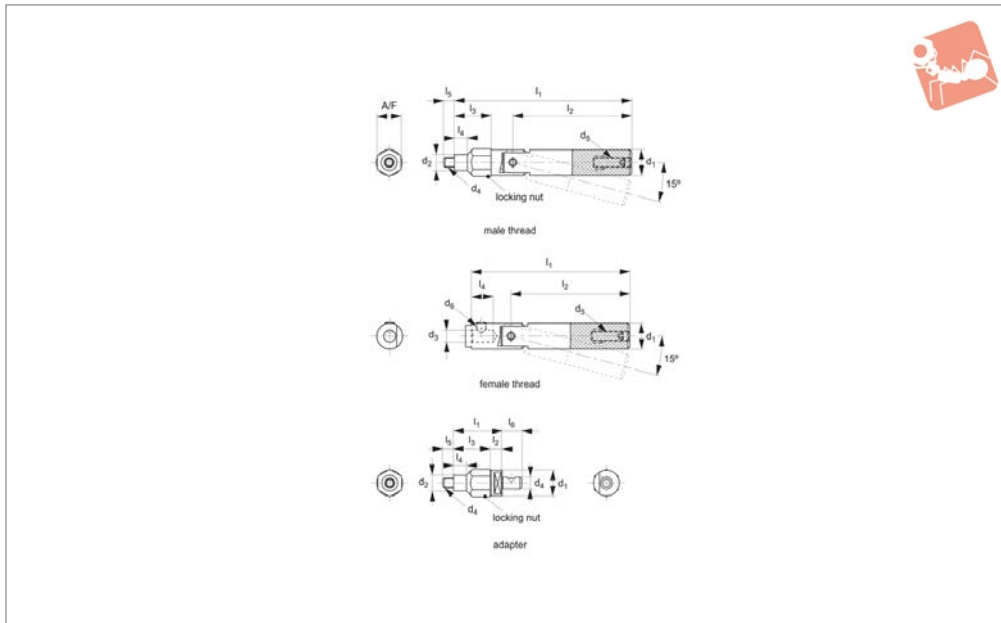
Order No.	Type	$l_1$	$l_2$	$l_3$	$l_4$	$l_5$	$d_1$	$d_2$	$d_3$	$d_4$	$d_5$	$d_6$	Weight g
12564.W0630	Male Thread	59	5	-	-	-	8	20	-	-	M 5x0,8	-	25
12564.W0640	Male Thread	89	6	-	-	-	10	25	-	-	M 6x1	-	50
12564.W0631	Female Thread	51	11	-	-	-	13	20	6	-	-	M 5x5	45
12564.W0641	Female Thread	79	13	-	-	-	15	25	8	-	-	M 6x6	90
12564.W0632	Adaptor	-	-	8	10	5	8	-	-	6	M 5x0,8	-	7
12564.W0642	Adaptor	-	-	10	12	6	10	-	-	8	M 6x1	-	14





# Adjustable Torque Handles for use with swing and pull clamps

# Adjustable Vertical Clamps



**12564.4**

ADJUSTABLE VERTICAL CLAMPS

### Material

Stem, handle: steel (C45), tempered and black oxide finish.  
Locking nut: steel (C45), black oxide

finish.

### Technical Notes

Turning the set screw inside the handle

allows the torque to be set to a desired clamping force.

Order No.	Type	$l_1$	$l_2$	$l_3$	$l_4$	$l_5$	$l_6$	$d_1$	$d_2$	$d_3$	$d_4$	$d_5$	$d_6$	A/F	Load setting range N	Weight g
<b>12564.W0730</b>	Male Thread	89,5	60	18,5	6,5	5,5		13	8		M 5x0,8	M 5x16		12	30 - 120	90
<b>12564.W0740</b>	Male Thread	119,0	84	23,0	8,0	6,5		15	10		M 6x1	M 6x20		14	30 - 160	140
<b>12564.W0731</b>	Female Thread	80,0	60		11,0			13		6		M 5x5			30 - 120	70
<b>12564.W0741</b>	Female Thread	107,0	84		13,0			15		8		M 6x20	M 6x6		30 - 160	130
<b>12564.W0732</b>	Adaptors	24,5	6	18,5	6,5	5,5	10	13	8		M 5x0,8				30 - 120	20
<b>12564.W0742</b>	Adaptors	30,0	7	23,0	8,0	6,5	12	15	10		M 6x1				30 - 160	40

