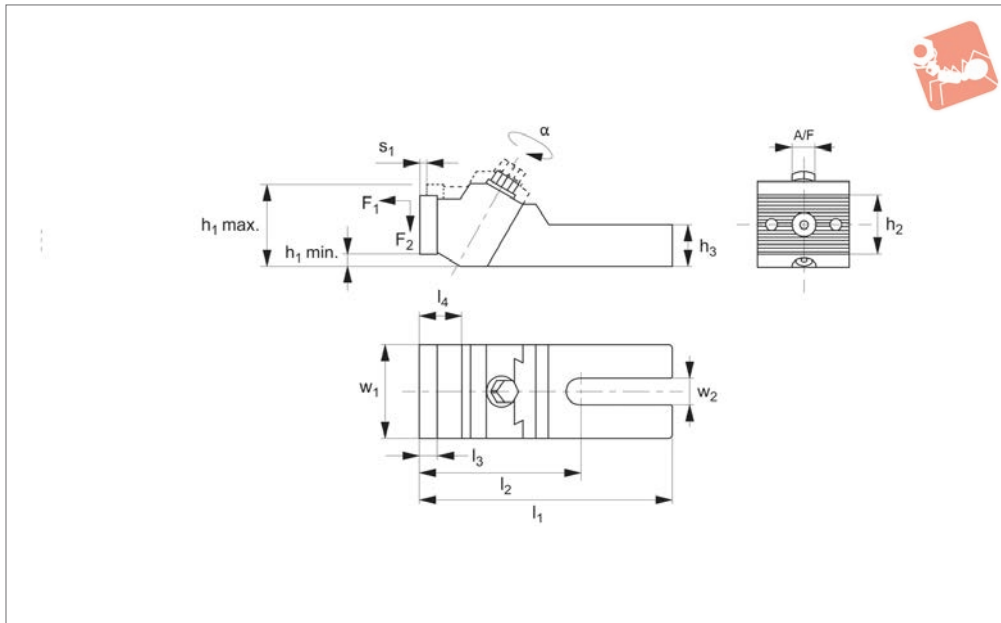




Pull-Down Clamps

solid clamping jaws

Heavy-Duty Side Clamping



12318

HEAVY-DUTY SIDE CLAMPING

Material

Body: steel, tempered.
Clamping jaws: steel, case hardened.

Technical Notes

Reversible clamping jaws with smooth side for machined workpieces and serrated side for rough clamping surfaces.

Tips

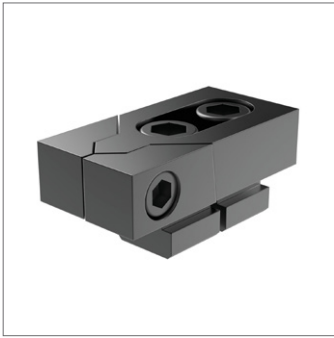
The large clamping surface makes these solid clamping jaws suitable for laterally clamping workpieces. We recommend using two clamping studs for fastening the solid clamping jaw on the machine table. Screws for T-slots No. 21000 - two screws per

clamping jaw - should be ordered separately as a fastening bolt depending on the width of the machine T-slot.

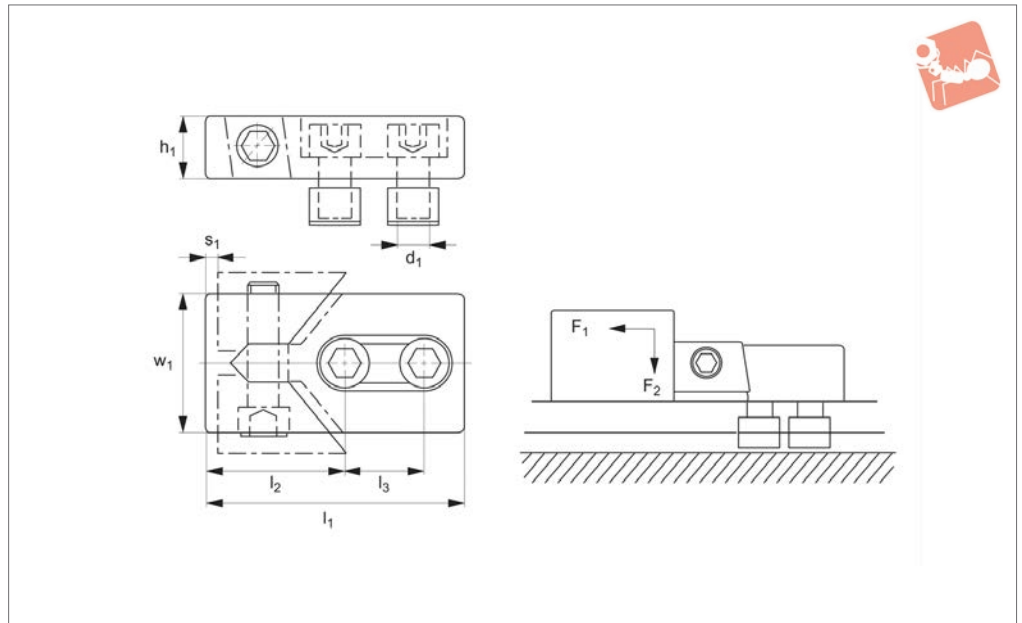
Important Notes

*Clamping forces F_1 and F_2 depend on the T-slot size.

Order No.	For T-slot	w_1	w_2	h_1 min.	h_1 max.	h_2	h_3	l_1 max.	l_2	l_3	l_4	Stroke s_1	A/F	Weight g
12318.W0012	12-14	40	13	3	33.5	25.4	20	128	82	8	19	3.0	13	840
12318.W0014	12-18	65	19	20	60.0	40	30	177	113	12	29	6.0	16	3020
12318.W0024	20-30	75	26	33	73.0	40	36	224	135	12	29	7.5	18	4880
12318.W0036	32-42	90	38	51	91.5	40	46	256	152	12	34	10.0	21	7715



12200



Material

Steel, heat treated, blackened.

Acutated on one side via hex. key (provided).

wards into the workpiece.

Sold in pairs.

Technical Notes

Ideal for clamping low-profile plates.

Tips

Clamping action is forwards and down-

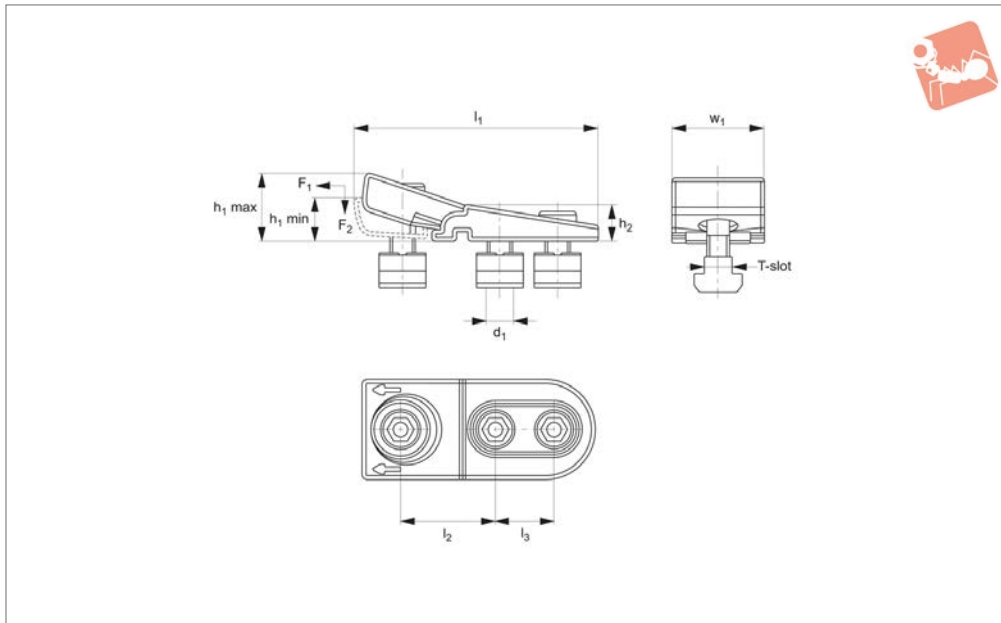
Order No.	T-slot size	w ₁	d ₁	h ₁	l ₁	l ₂	l ₃	Stroke s ₁	F ₁ kN	F ₂ kN	Weight/pair g
12200.W0012	12	40	M10	20	80	39	26	3	16	0.6	1150
12200.W0014	14	40	M12	20	80	39	26	3	22	0.9	1250
12200.W0016	16	40	M12	20	80	39	26	3	22	0.9	1330
12200.W0017	16	50	M14	25	100	46	34	4	32	1.2	2340
12200.W0018	18	50	M16	25	100	46	34	4	36	1.4	2540
12200.W0020	20	50	M16	25	100	46	34	4	36	1.4	2660
12200.W0022	22	78	M20	30	140	65	50	5	36	1.4	5980
12200.W0024	24	78	M20	30	140	65	50	5	36	1.4	6330
12200.W0028	28	78	M24	30	140	65	50	5	40	1.6	7060
12200.W0030	30	78	M24	30	140	65	50	5	40	1.6	7580





Low Profile Flat Clamps for T-slots

Heavy-Duty Side Clamping



12205

HEAVY-DUTY SIDE CLAMPING

Material

Steel, tempered and burnished.

Suitable for horizontal and vertical applications.

Technical Notes

Low height clampings of thin workpieces.

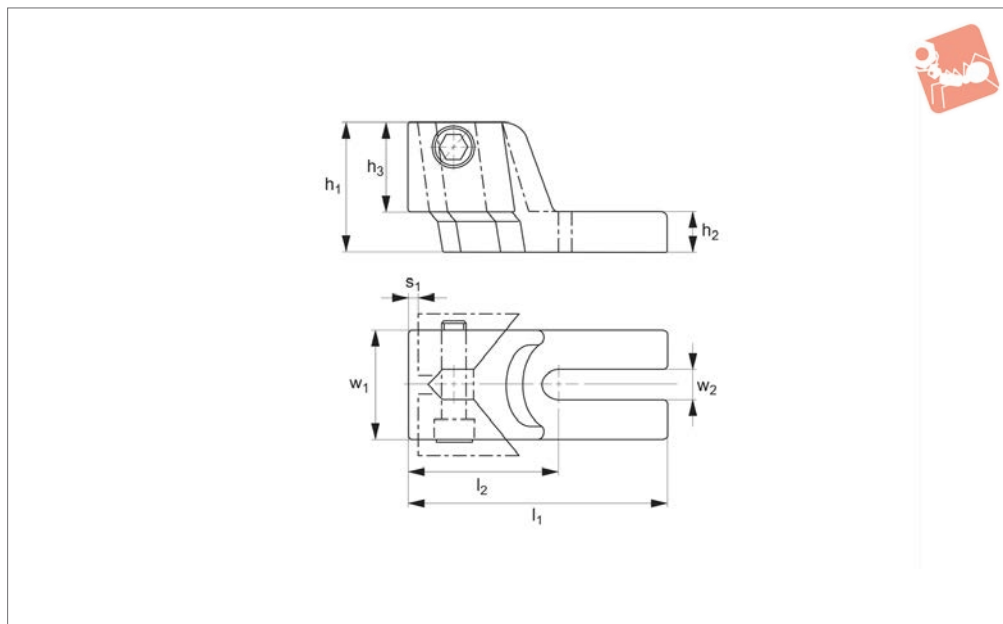
Tips

For clamping of low profile workpieces.

Order No.	T-slot size	w ₁	d ₁	h ₁ min.	h ₁ max.	h ₂	l ₁	l ₂	l ₃	F ₁ kN	F ₂ kN	Weight g
12205.W0014	14	15	M12	16	25	16	110	45-48	26	15	7.5	579
12205.W0016	16	15	M12	16	25	16	110	45-48	26	15	7.5	600
12205.W0018	18	20	M16	19	30	19	130	50-54	33	20	10.0	1011
12205.W0020	20	20	M16	19	30	19	130	50-54	33	20	10.0	1055
12205.W0022	22	30	M20	22	36	22	152	58-63	41	30	15.0	1670
12205.W0024	24	30	M20	22	36	22	152	58-63	41	30	15.0	1705
12205.W0028	28	30	M20	22	36	22	152	58-63	41	30	15.0	1807



12300



Material

Body: cast iron.
Jaws: steel, hardened.

Technical Notes

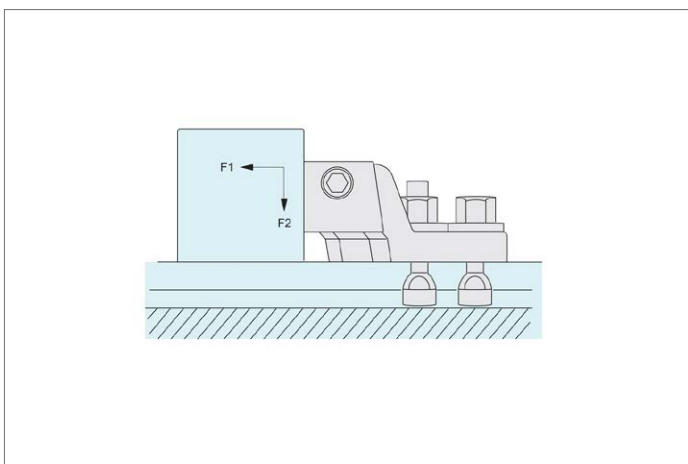
For mounting of each clamp to machine

table, two clamping bolts no. 21000, washers no. 25000 and fixture nuts no. 24300 should be ordered separately. Hex. key provided.

Tips

Can be actuated from left hand side only.
Sold in pairs.
For table of clamping forces, see below.

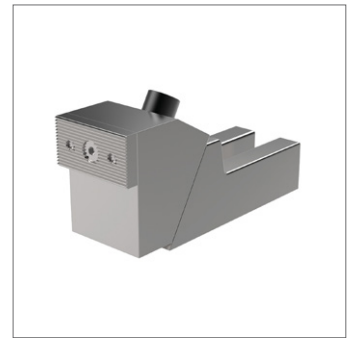
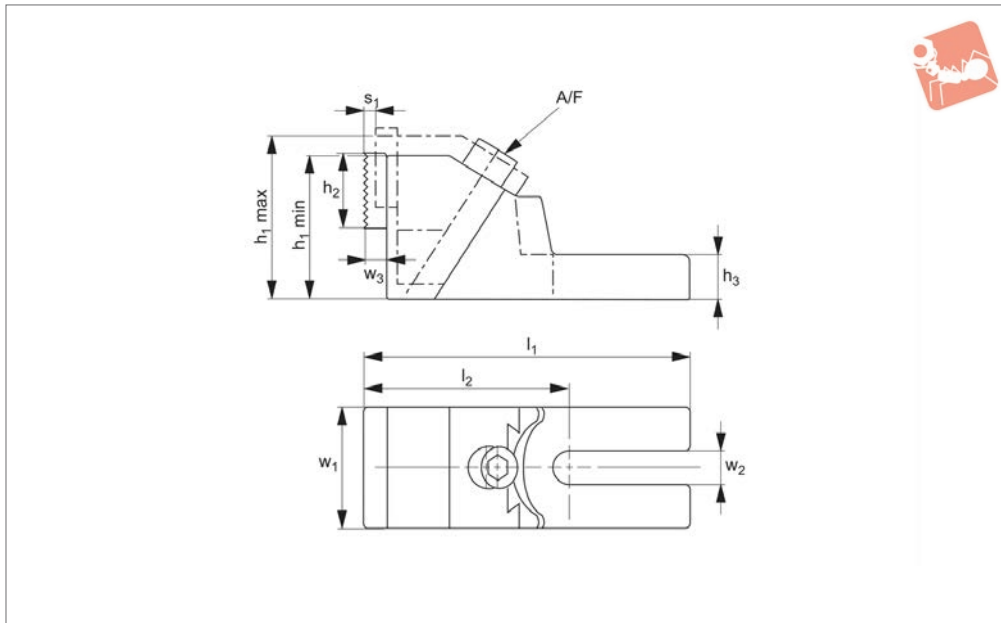
Order No.	For T-slot	w_1	w_2	h_1	h_2	h_3	l_1	l_2	Stroke s_1	Weight g
12300.W0016	10-14	40	13	50	20	30	115	60	3	1590
12300.W0018	16-20	50	19	60	25	35	150	72	4	2940
12300.W0030	22-36	80	31	75	30	45	205	102	5	7900





Clamping Jaws - Extra Strong downhold action

Heavy-Duty Side Clamping



12320

HEAVY-DUTY SIDE CLAMPING

Material

Body: cast iron.
Jaws: steel, hardened.

Clamping action is forwards and downwards into the workpiece.

the high clamping forces we recommend the use of 2 clamping bolts (no. 21000), for each clamp.

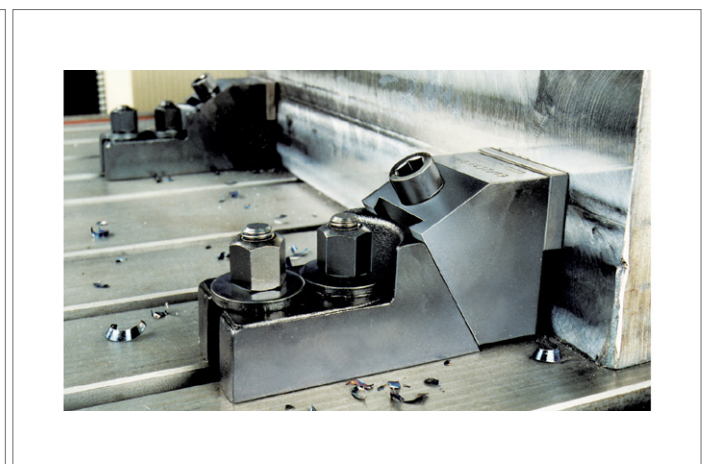
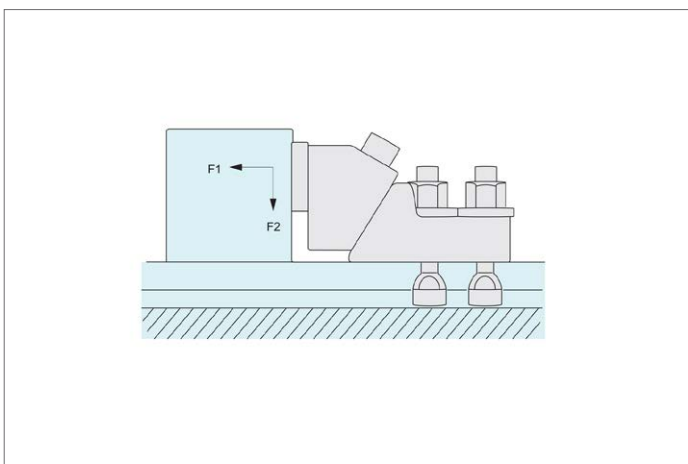
Technical Notes

Jaw plates are reversible (ribbed/smooth).

Tips

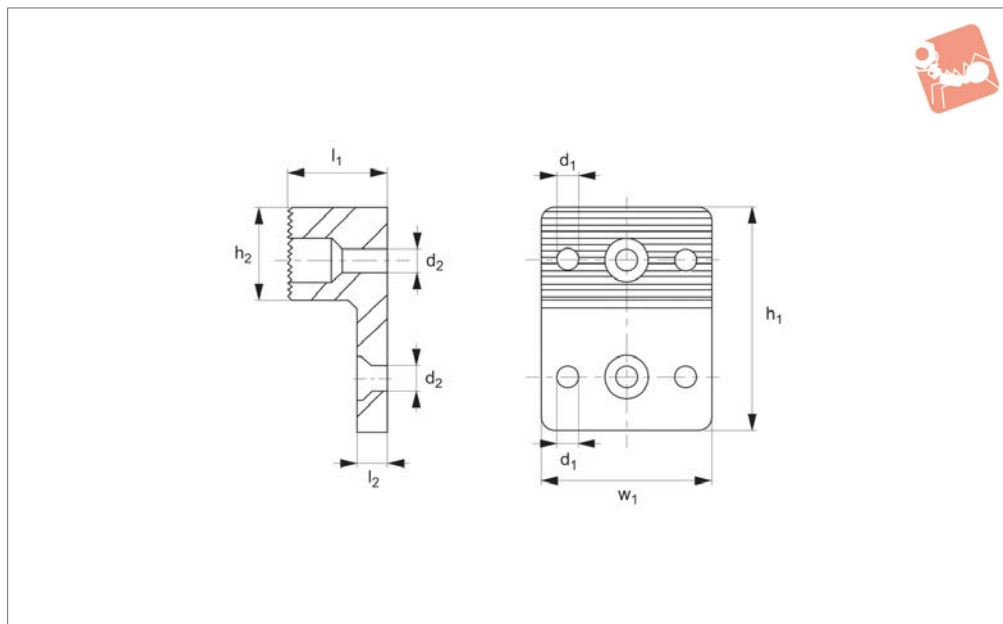
Extremely powerful clamps for use where high clamping forces are required. Due to

Order No.	For T-slot	w ₁	w ₂	w ₃	h ₁ min.	h ₁ max.	h ₂	h ₃	l ₁	l ₂	Stroke s ₁	A/F	Weight g
12320.W0014	12-18	65	19	12	85	99	40	38	179	112.5	8	14	1590
12320.W0024	20-30	75	26	12	100	118	40	45	230	138.5	11	14	2940
12320.W0036	32-42	90	38	12	120	145	40	56	265	158.0	15	17	7900





12330



Material

Steel, case hardened, with M8 bolts.

machining of rough parts. Can be mounted on the clamping jaw or the stop.

Tips

Clamping jaw with serrated surface for

Order No.	For clamp w_1	d_1	d_2	h_1	h_2	l_1	l_2	Weight g
12330.W0019	65	8.1	9	85	35	38	12	889
12330.W0026	75	8.1	9	100	45	38	12	1306
12330.W0038	90	8.1	9	120	50	38	12	1829

