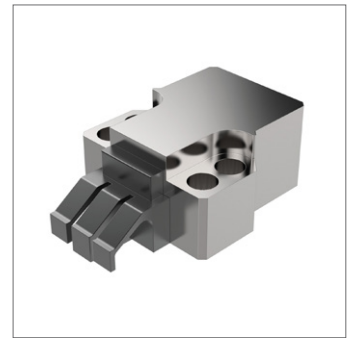
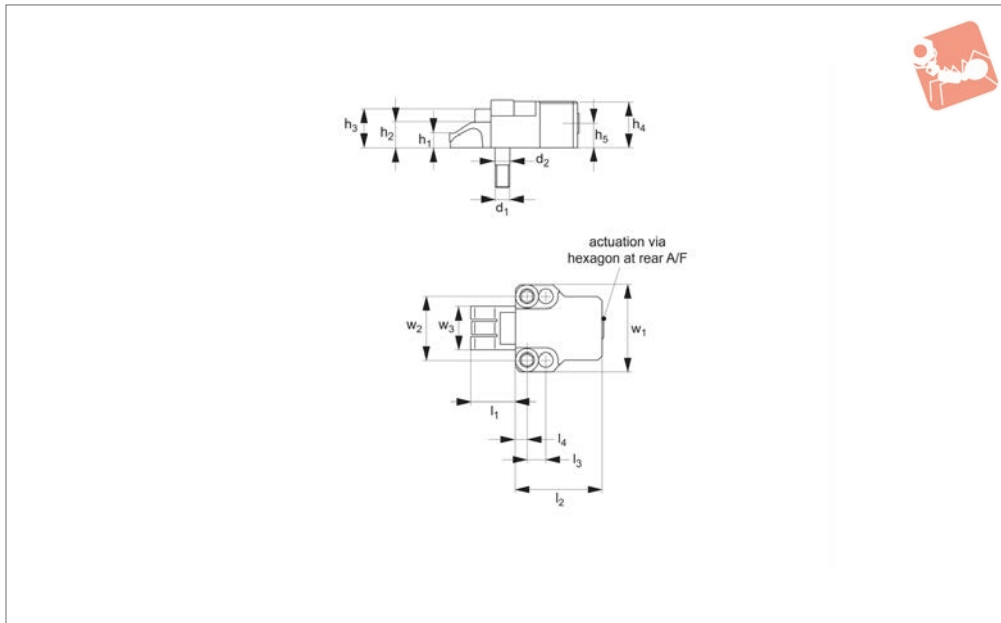




# 2.2 Ton Finger Clamp - Smooth Face movable jaw

## Heavy-Duty Side Clamping



**11040**

HEAVY-DUTY SIDE CLAMPING

**Material**

Hardened steel, with spring steel clamping element.

**Technical Notes**

A low height, very powerful compact clamp. These clamps have a unique sideways and

downwards clamping action.

**Tips**

Provided with specially ground location bolts  $\varnothing 10,2 - M10$ , allowing for precise positioning. For mounting there are 2 tapped holes at  $44,00 \pm 0,005\text{mm}$  centres,  $M10$  with depth of 28mm, counterbore

10,2 (H6) with depth of 14mm.

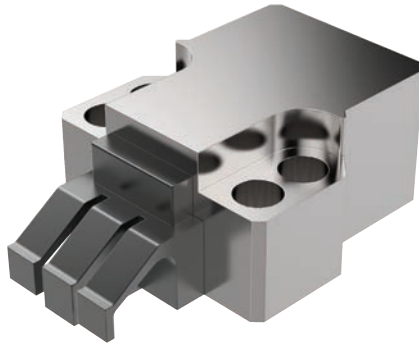
**Important Notes**

When used in conjunction with fixed stop, part nos. 11041 or 11043, these clamps achieve a positive downforce on both faces of the workpiece - a unique feature.

Order No.	Clamping height $h_1$		Clamping stroke $l_1$		$d_1$	$d_2$ tol. h6	$h_2$	$h_3$	$h_4$	$h_5$	$l_2$
11040.W0025	10		18-34		M10	10.2	18	27	33	17	60
Order No.	$l_3$	$l_4$	$l_5$	$w_1$	$w_2$	$w_3$	A/F	Clamping torque Nm		Clamping force kN	
11040.W0025	13	8	18	60	44	30	8	50		22	

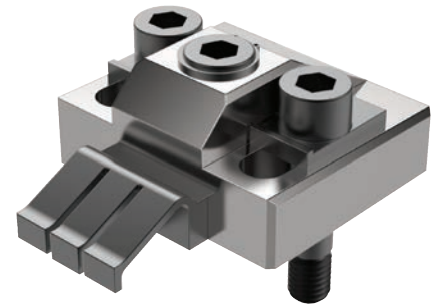


## Clamping Torque



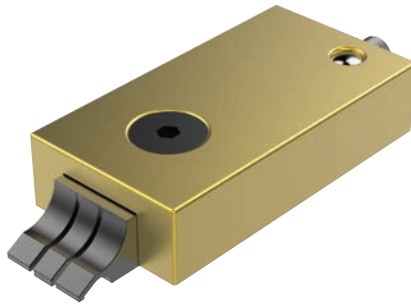
11040/CL2040

Clamping Torque N/m	Clamping Force N
50	23000
40	18000
30	12500
25	11500
20	9500



11070/CL2070

Clamping Torque N/m	Clamping Force N
60	16500
50	15000
40	12000
30	10000
25	8000
20	7000



11081/CL2081

Clamping Torque N/m	Clamping Force N
5	6600
4.5	5500
4	4900



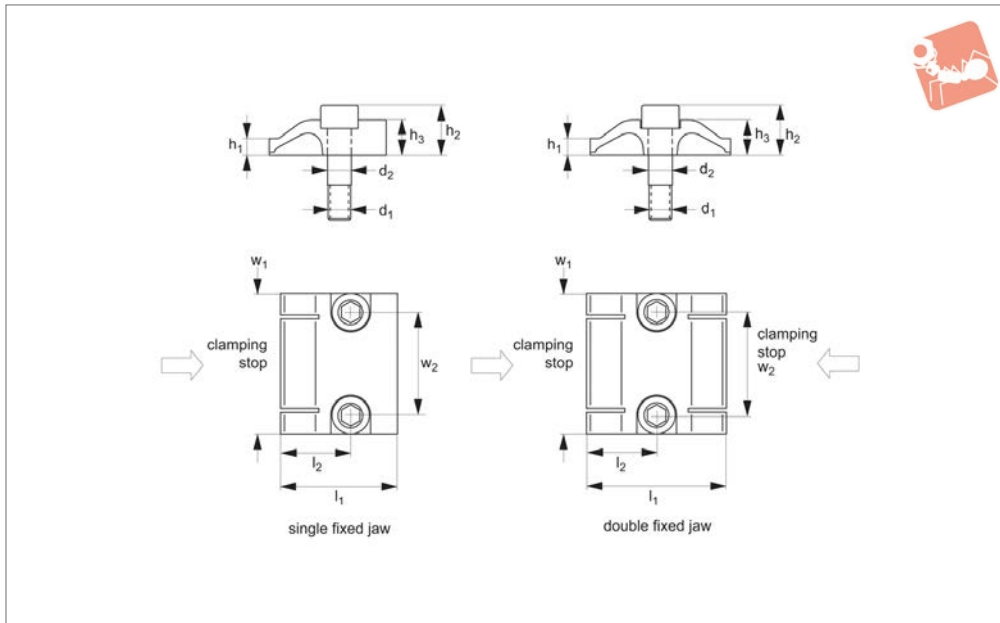
10940/CL0030

Clamping Torque N/m	Clamping Force N
8.5	4000
8	3800
7	3400
6	3000
5	2500
4	2000



## 2.2 Ton Finger Clamp - Fixed Stop smooth face

## Heavy-Duty Side Clamping



# 11041

HEAVY-DUTY SIDE CLAMPING

### Material

Spring steel.

### Technical Notes

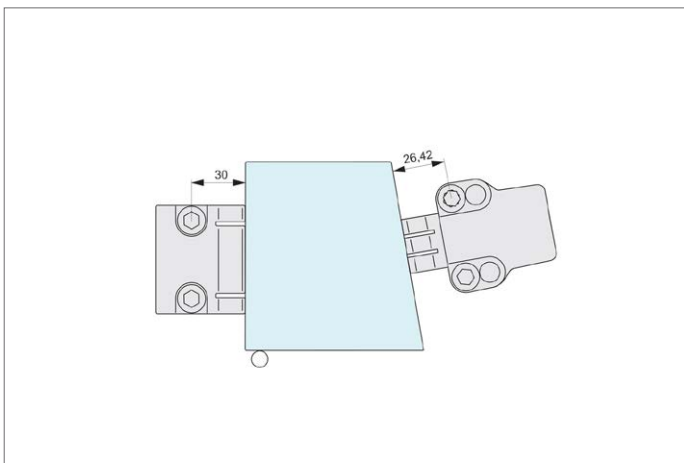
These stops have a unique sideways and downwards action.

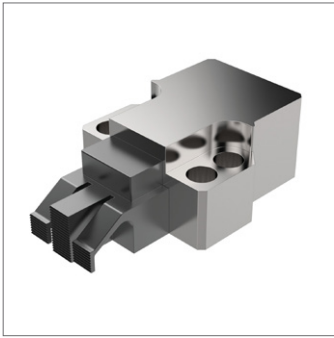
### Tips

Provided with specially ground location bolts  $\varnothing 10,2 - M10$ , allowing for precise positioning. Precision of the screws also allows dimension  $l_2$  to be used as a useful

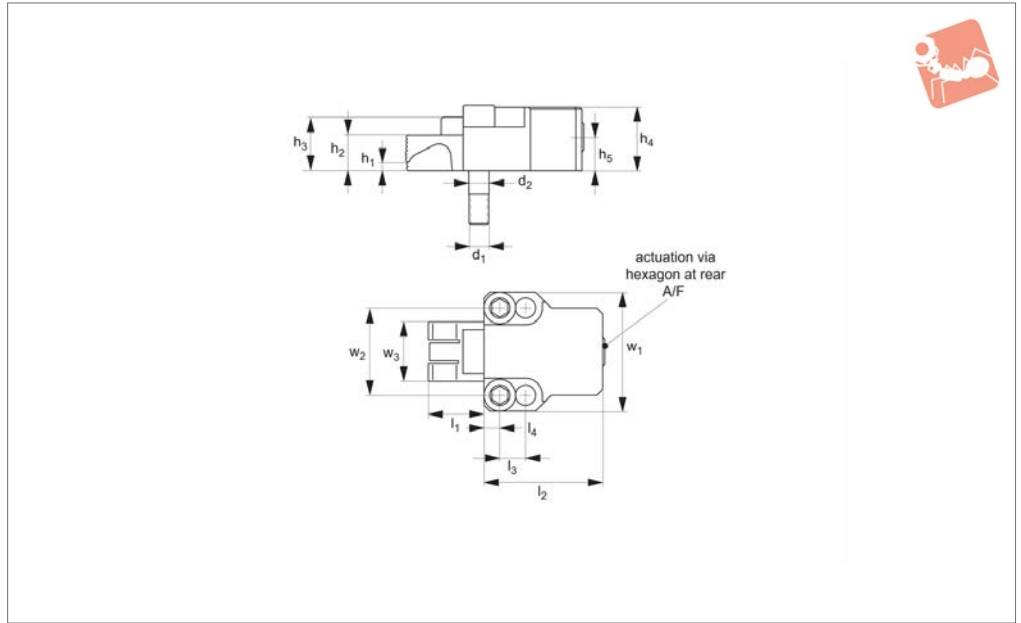
clamping datum. For mounting there are 2 tapped holes at  $44,00 \pm 0,005\text{mm}$  centres, M10, with depth of 28mm, counterbore 10,2 (H6), with depth of 14mm.

Order No.	Type	Clamping height $h_1$	$d_1$	$d_2$ tol. h6	$h_2$	$h_3$	$l_1$	$l_2$	$w_1$	$w_2$
11041.W0080	Single	7	M10	10.2	22	15	50	30	60	44
11041.W0082	Double	7	M10	10.2	22	15	60	30	60	44





### 11042



**Material**

Hardened steel, with spring steel clamping element.

**Technical Notes**

A low height, very powerful compact clamp. These clamps exert a sideways and down-

wards clamping action.

**Tips**

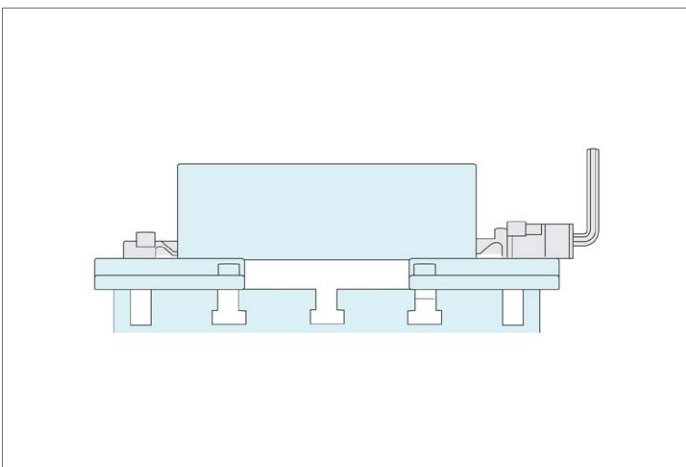
Provided with specially ground location bolts  $\text{\O}10,2 - \text{M}10$ , allowing for precise positioning. For mounting there are 2 tapped holes at  $44,00 \pm 0,005\text{mm}$  centres, M10 with depth

of 28mm, counterbore 10,2 (H6) with depth of 14mm.

**Important Notes**

When used in conjunction with fixed stop (part nos. 11041 or 11043) these clamps achieve a positive downforce on both faces of the workpiece - a unique feature.

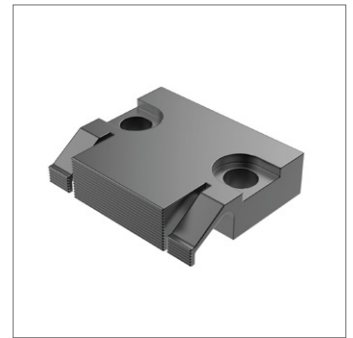
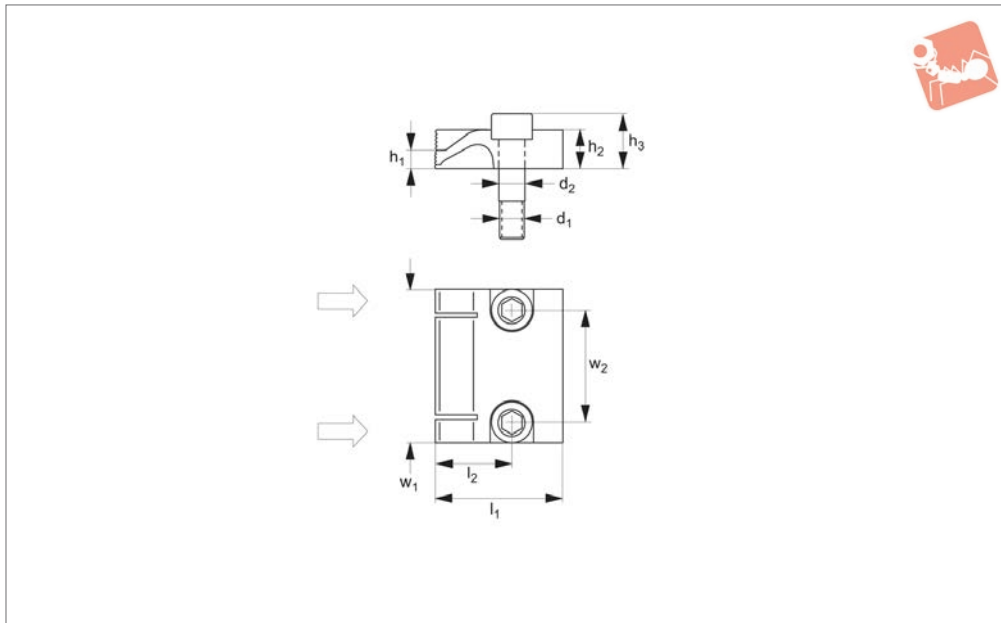
Order No.	Clamp height $h_2$	Clamp stroke $l_1$	$d_1$	$d_2$ tol. h6	$h_1$	$h_3$	$h_4$	$h_5$	$l_2$	$l_3$	$l_4$	$w_1$	$w_2$	$w_3$	A/F	Torque to Nm max.	Clamping force kN max.
11042.W0027	18	18-34	M10	10,2	10	27	33	17	60	13	8	60	44	30	8	50	22





## 2.2 Ton Fixed Stop - Serrated Face

## Heavy-Duty Side Clamping



**11043**

HEAVY-DUTY SIDE CLAMPING

### Material

Spring steel.

### Technical Notes

These stops have a unique sideways and

downwards action.

### Tips

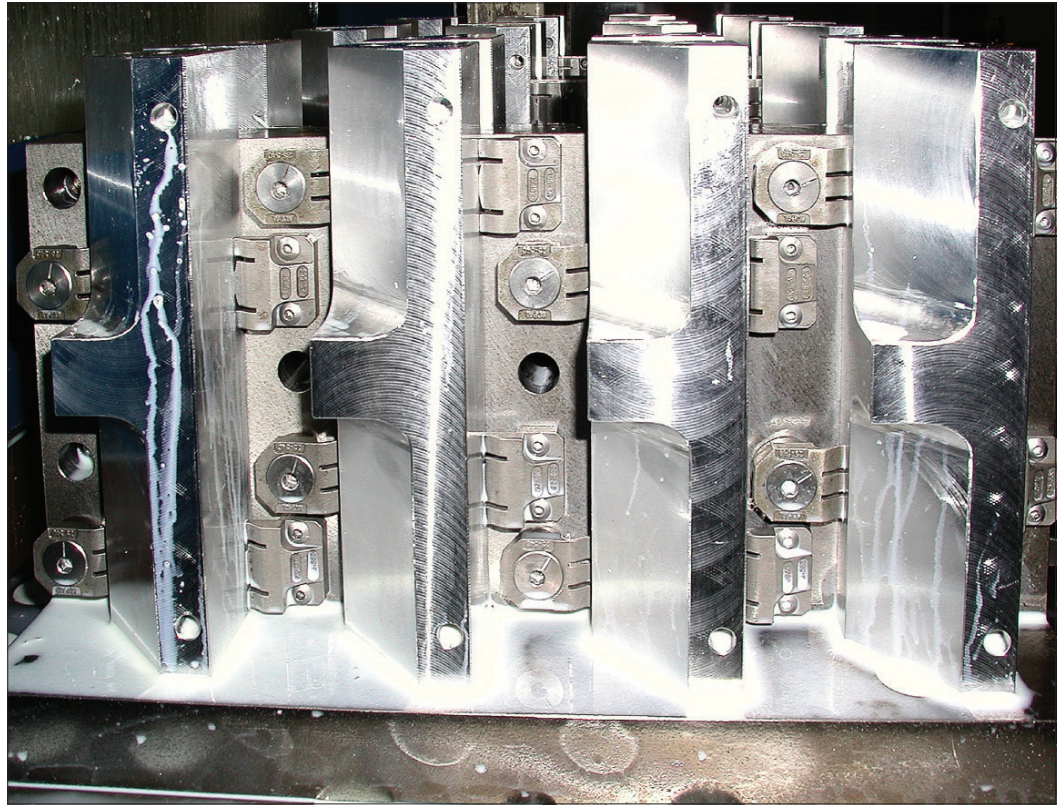
Provided with specially ground location bolts  $\varnothing 10,2 - M10$ , allowing for precise

positioning. For mounting - 2 tapped holes at  $44,00 \pm 0,005$ mm centres, M10 with depth of 28mm, counterbore 10,2 (H6) with depth of 14mm.

Order No.	Type	Clamping height $h_1$	$d_1$	$d_2$ tol. h6	$h_2$	$h_3$	$l_1$	$l_2$	$w_1$	$w_2$
11043.W0081	Serrated Face	7	M10	10.2	15	22	50	30	60	44



## Application



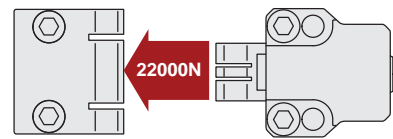
HEAVY-DUTY SIDE CLAMPING

## Unique Horizontal Clamping Set-Ups

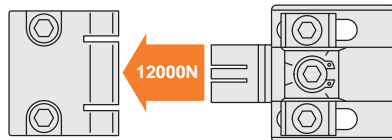
**Part No. 10900, 10920, 10940**  
T-slot table and special machining set-ups



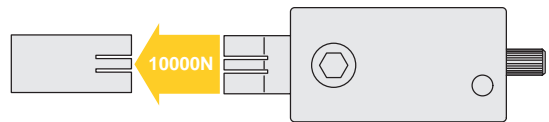
**Part No. 11040, 11041, 11042, 11043**  
Supports and special machining set-ups



**Part No. 11070, 11071**  
Supports and special machining set-ups



**Part No. 11080, 11081, 11083**  
T-slot table, supports and special machining set-ups





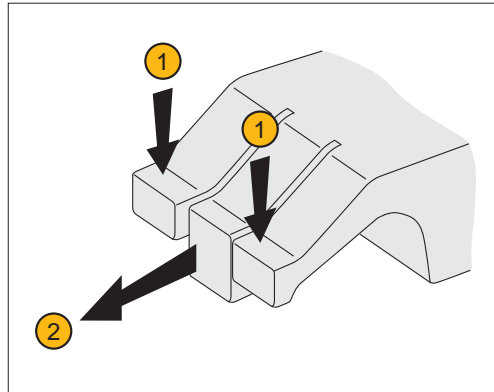


## Unique Action - "three finger" Clamping

Our horizontal clamps have a unique "three finger" arrangement ensuring components are both pulled down and clamped in the same motion. The face of the clamp is made of three parts or "fingers":

- Two outer flexible fingers (1); for pulling down the component to the work table.
- One solid central finger (2), to provide direct clamping action.

Available in two styles – smooth and serrated face. They can also cater for workpieces with an adverse angle on the clamping face – for example flame cut steel blanks.



Pull down AND clamp with the highest of clamping forces – from 0,4 tons to 2,2 tons!

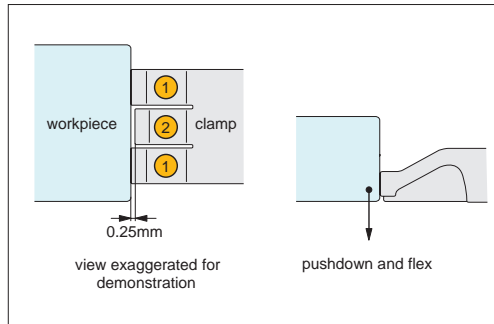
Used in our clamping series:

10900, 10940, 10880,  
10920, 11040, 11041,  
11042, 11043, 11070,  
11071, 11080, 11081,  
11082, 11083

## Clamping Action

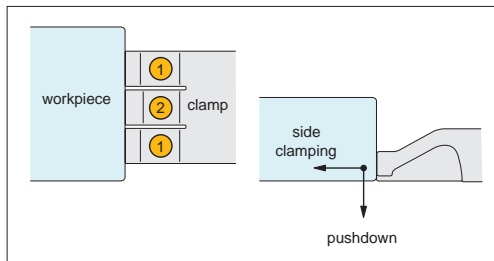
The clamps outer flexible fingers (1) are approx. 0,25mm longer than the solid central finger/clamping stop (2), this slight difference in length means it is the flexible fingers which first come into contact with the workpiece.

As initial contact is made with the work-piece the flexible fingers (1) apply downward pressure forcing the workpiece down against the work table, the flexible fingers are compressed until they are the same length as the solid central finger/clamping stop (2).



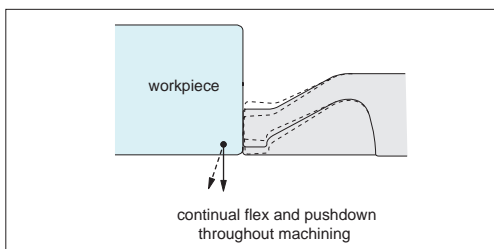
## Contact

As the solid central finger/clamping stop (2) comes into contact with the work-piece it applies high side clamping pressure to achieve clamping forces up to 2,2 tons (dependent upon clamping model selected).



## Clamping

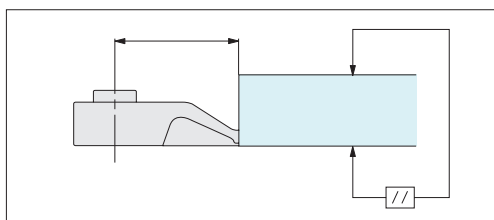
During machining the uniquely designed flexible fingers (1) continue to flex and twist applying downward pressure to keep the workpiece flat to the work table throughout.

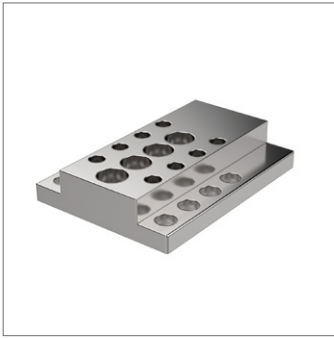


## Machining

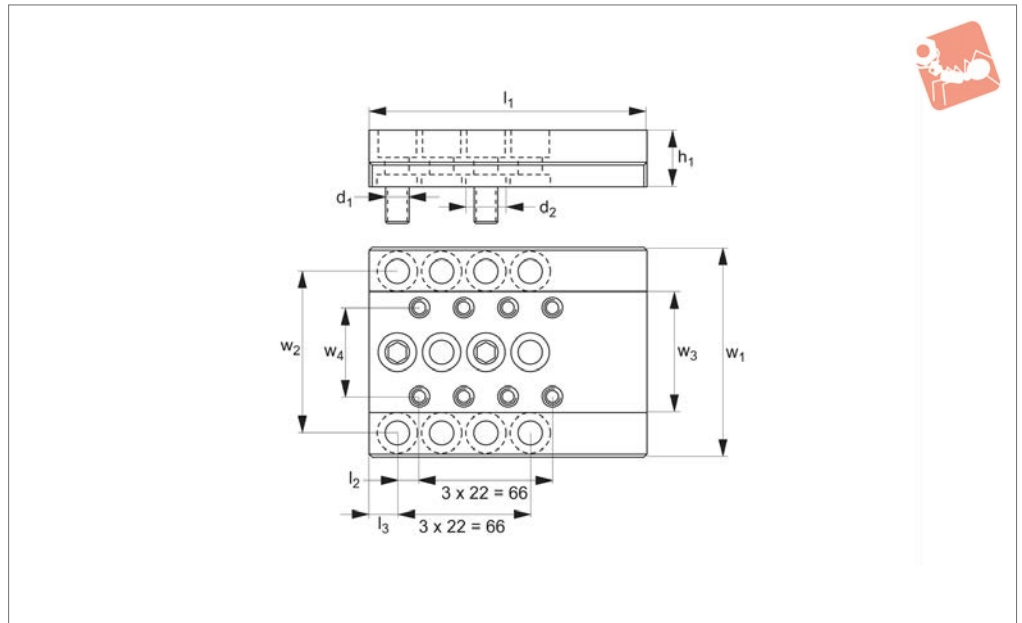
## Precision Positioning

The unique clamping action achieves precision positioning of workpieces – ensuring the workpiece remains parallel to the reference surface.





## 11045



### Material

Steel, hardened, with ground faces.

### Technical Notes

For T-slot tables and fixture plates.

### Tips

Provided with 3 x M12 fixing screws and centring locator.

For use with parts 11040-11043.

Order No.	$d_1$	$d_2$	$h_1$	$l_1$	$l_2$	$l_3$	$w_1$	$w_2$	$w_3$	$w_4$
11045.W0016	M12	20	28	138	11	14	104	80	60	44

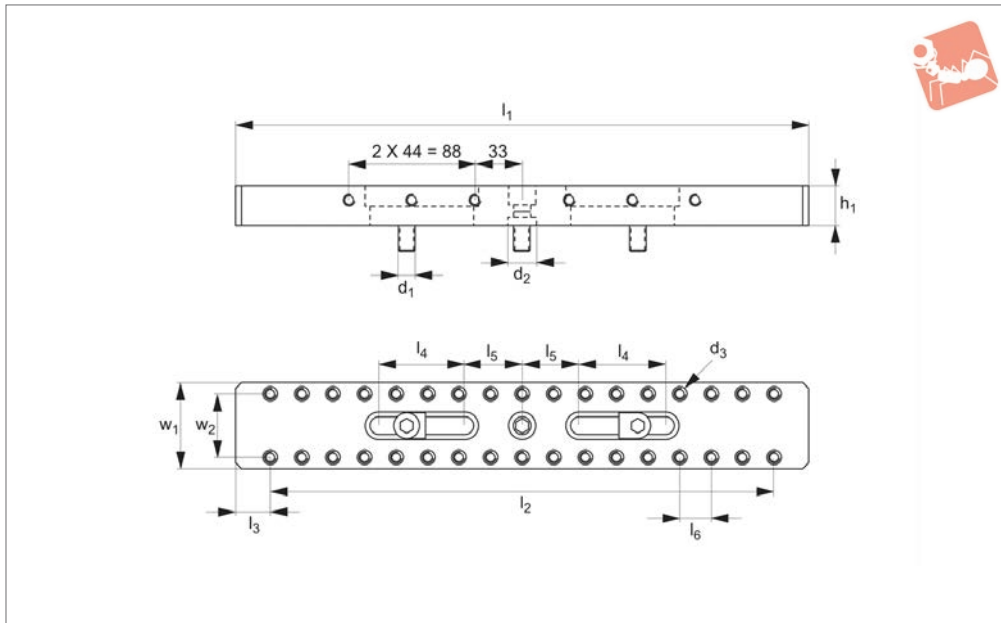




# Base Plates Finger - Long

for 2.2 ton clamps

## Heavy-Duty Side Clamping



# 11046

HEAVY-DUTY SIDE CLAMPING

### Material

Steel, hardened, with ground faces.

### Technical Notes

For T-slot tables and fixture plates.

### Tips

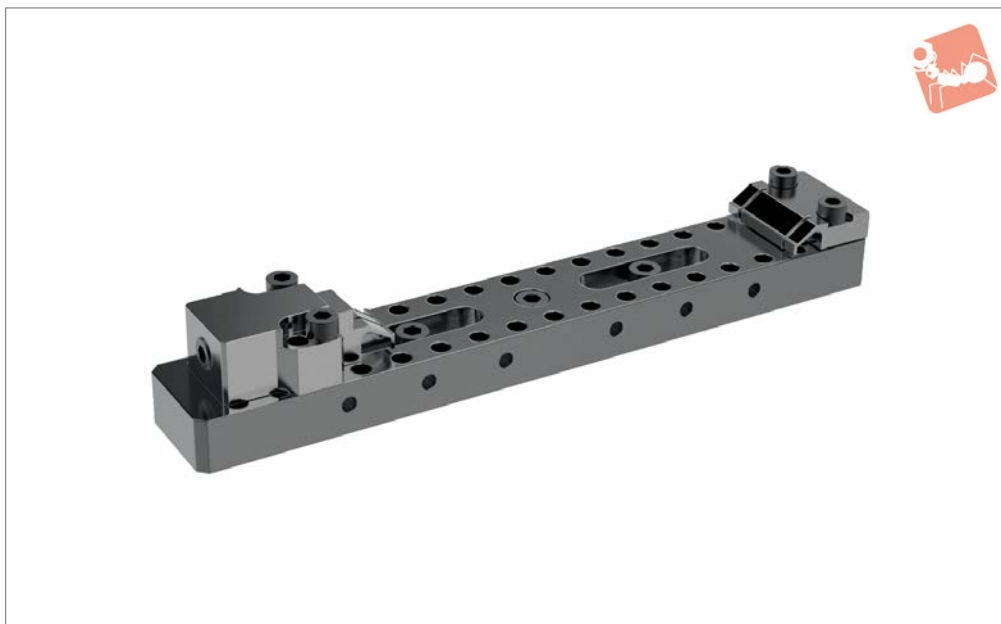
Provided with 3 x M12 fixing screws and centring locator.

For use with parts 11040-11043.

Order No.	d <sub>1</sub>	d <sub>2</sub>	d <sub>3</sub>	h <sub>1</sub>	l <sub>1</sub>	l <sub>2</sub>	l <sub>3</sub>	l <sub>4</sub>	l <sub>5</sub>	l <sub>6</sub>	w <sub>1</sub>	w <sub>2</sub>
11046.W0015	M12	20	Ø10,2 - M10	28	400	352	60	40	24	22	60	44



**11050**



### Material

Clamp rail: steel, hardened and ground faces.  
Clamps: hardened steel, with spring steel clamping element.  
Stops: spring steel.

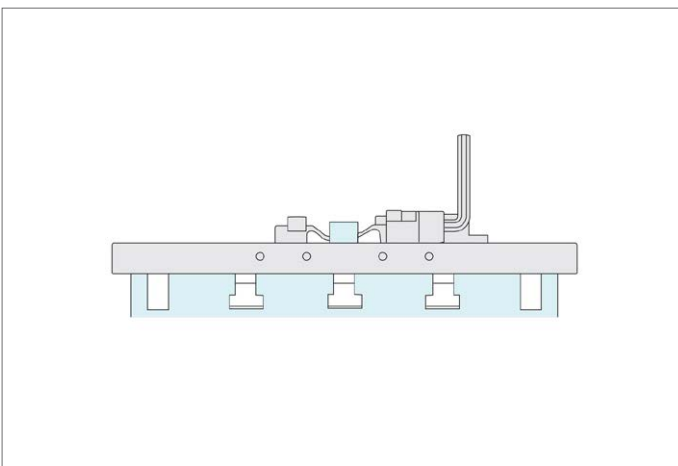
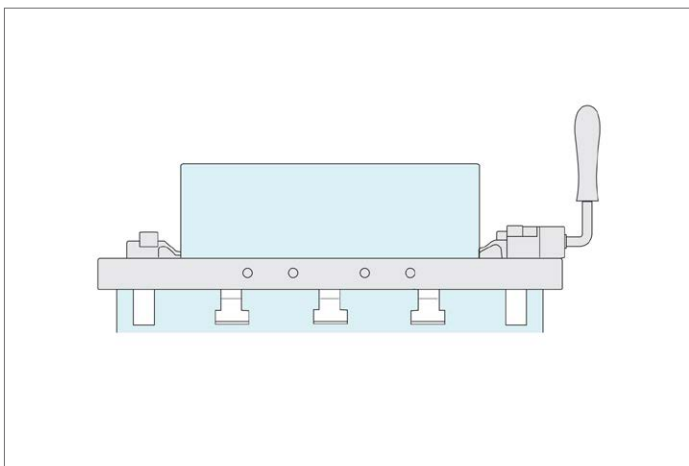
### Technical Notes

A low height, very powerful compact clamp system.  
These clamps have a unique sideways and downwards clamping action.  
Maximum workpiece capacity 280mm.

### Tips

Provided with specially ground location bolts  $\varnothing 10,2 - M10$ .  
Also available with serrated jaws.

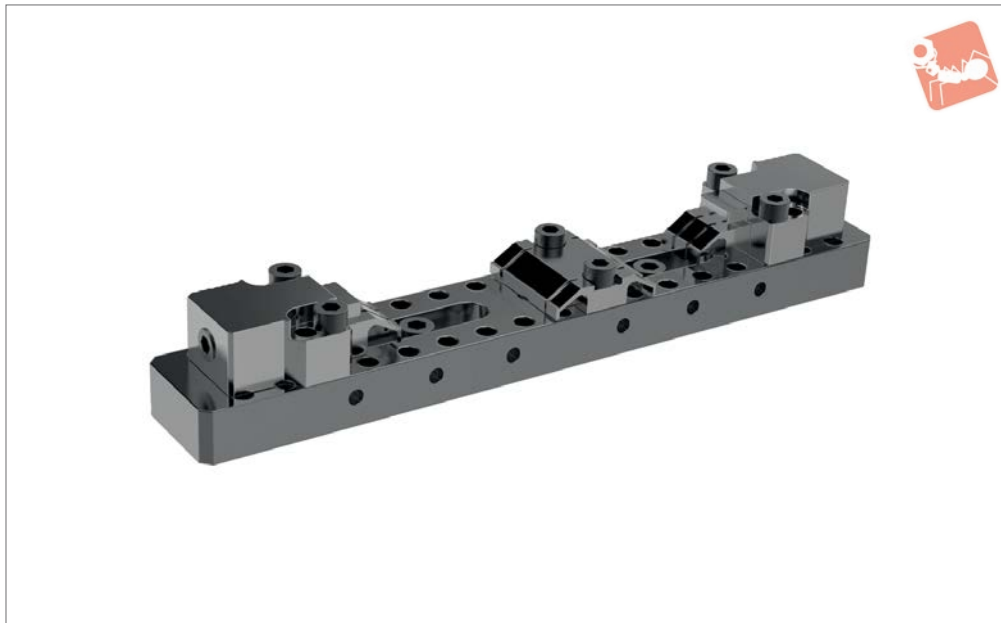
Order No.	Type	Base	Clamp	Stop
11050.W0004	Standard Vice Set	1 pc 11046.W0015	1 pc 11040.W0025	1 pc 11041.W0080





## 2.2 Ton Finger Clamps double vice sets

## Heavy-Duty Side Clamping



# 11051

HEAVY-DUTY SIDE CLAMPING

### Material

Clamp rail: steel, hardened, with ground faces.

Clamps: hardened steel, with spring steel clamping element.

Stops: spring steel.

### Technical Notes

A low height, very powerful compact

clamp.

These clamps have a unique sideways and downwards clamping action.

Maximum workpiece capacity 107mm when used as a double vice, or 280mm when used as a single vice.

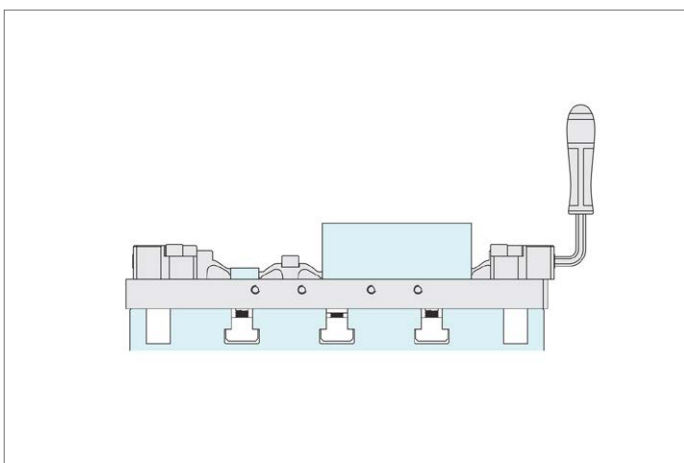
### Tips

Provided with specially ground location

bolts  $\varnothing 10,2$  - M10.

Also available with serrated jaws.

Order No.	Type	Base	Clamp	Stop
11051.W0002	Double Vice Set	1 pc 11046.W0015	2 pcs 11040.W0025	1 pc 11041.W0082





**11052**



**Material**

Clamp rail: steel, hardened, with ground faces.  
 Clamps: hardened steel, with spring steel clamping element.  
 Stops: spring steel.

**Technical Notes**

A low height, very powerful compact clamp.  
 These clamps have a unique sideways and downwards clamping action.

**Tips**

Provided with specially ground location bolts Ø10,2 - M10.  
 Also available with serrated jaws.

Order No.	Type	Base	Clamp	Stop
11052.W0006	Modular Vice Set	2 pcs 11045.W0016	1 pc 11040.W0025	1 pc 11041.W0080



# Horizontal Clamping

up to 2.2 tons



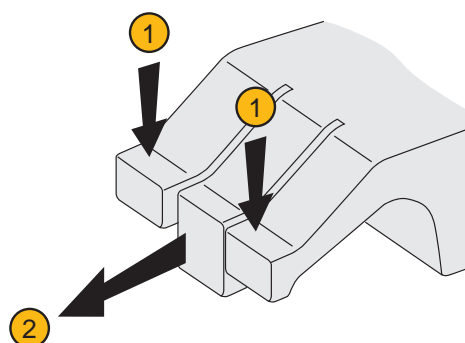
# Clamping & Height Setting

## Unique Action - "three finger" Clamping

Our horizontal clamps have a unique "three finger" arrangement ensuring components are both pulled down and clamped in the same motion. The face of the clamp is made of three parts or "fingers":

- Two outer flexible fingers ①; for pulling down the component to the work table.
- One solid central finger ②, to provide direct clamping action.

Available in two styles – smooth and serrated face. They can also cater for workpieces with an adverse angle on the clamping face – for example flame cut steel blanks.



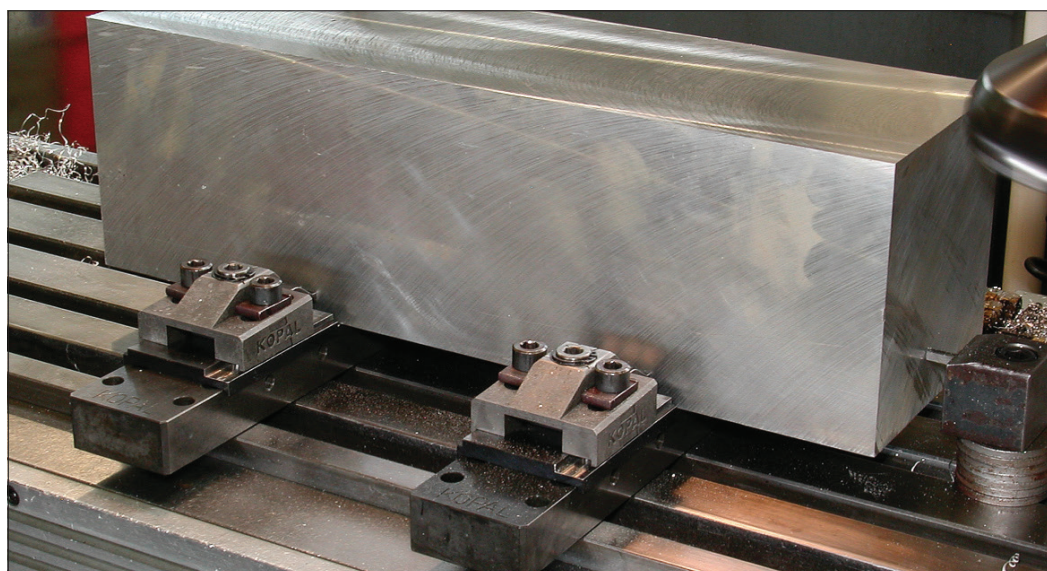
11040/41/42/43

22000N

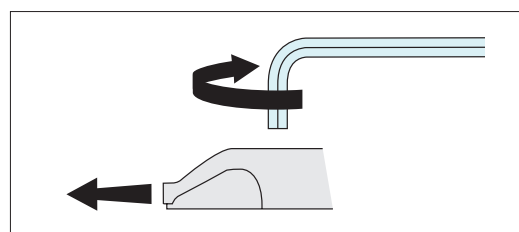
11070/71

12000N

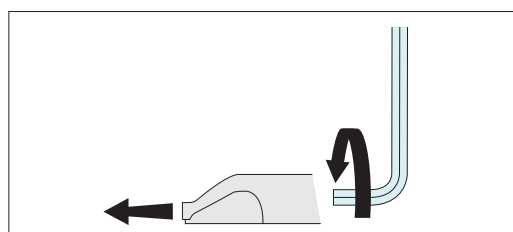
HEAVY-DUTY SIDE CLAMPING



## Options

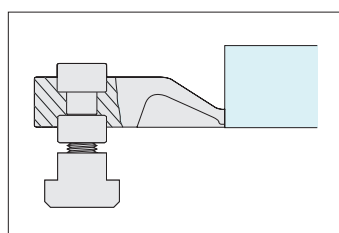


Quick 1/4 turn eccentric clamping – on models offering 4000 and 12000 Newtons clamping force.

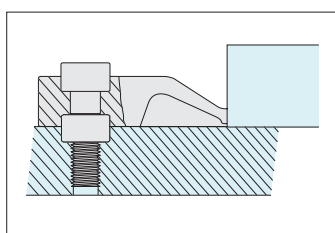


Rear screw clamping – on models offering 6500, 10000 and 22000 Newtons clamping force.

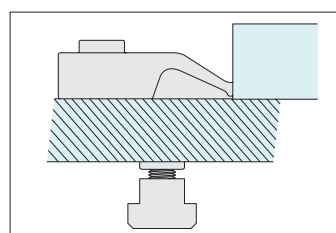
## Actuation



T-Slotted tables



Dedicated fixturing



Modular fixturing

## Mounting