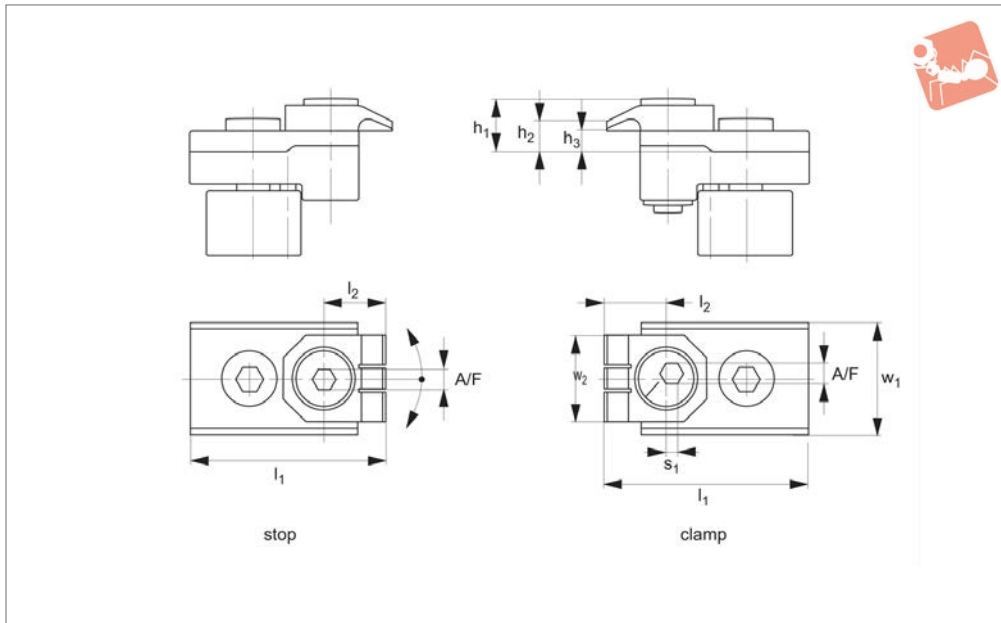




T-Slot Finger Clamp Set

low profile

Low Profile Side Clamping



10960

LOW PROFILE SIDE CLAMPING

Material

Clamp: spring steel.
Block: steel.

Technical Notes

The clamping point is 5mm above the machine table. Risers can be used to allow

for through machining and drilling.

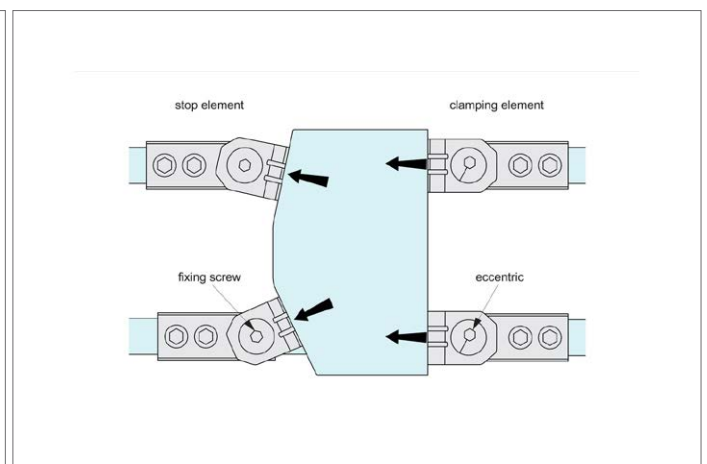
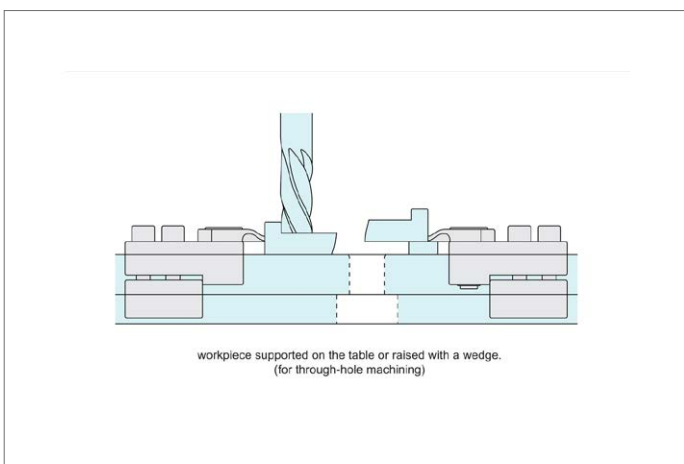
Supplied as a set: one-piece clamp, one-piece stop.

Tips

These low-profile clamps and stops have a holding force of 4000 N. The fingers push

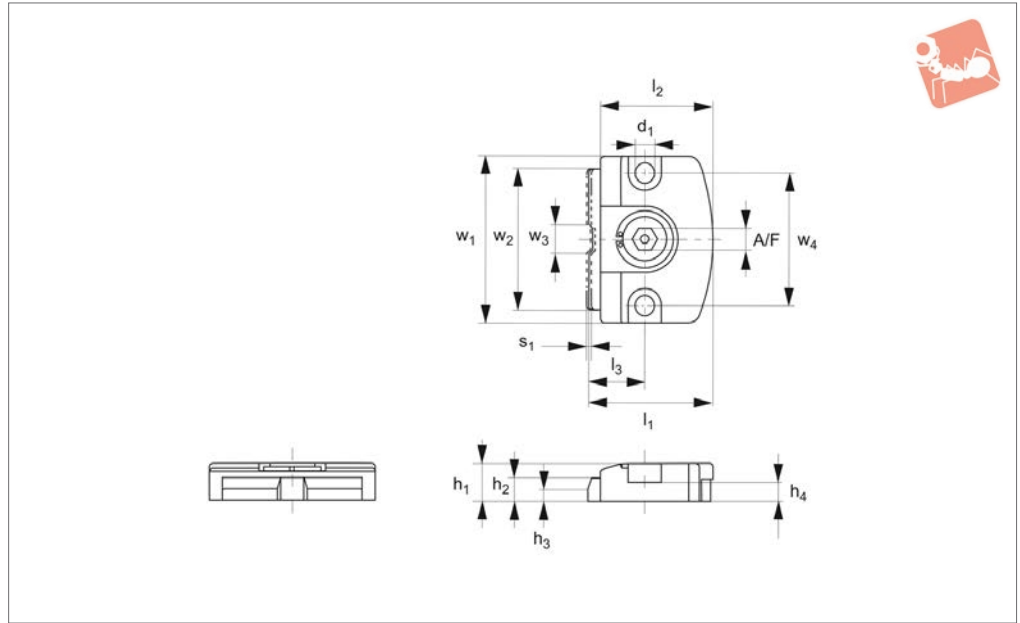
the workpiece down before clamping. The small height of the clamps eliminate any risk of collision between clamp and tooling- ideal for machining small and low profile components.

| Order No. | Type | Clamping stroke s_1 | For T-slot | Clamping height min. | l_1 | l_2 | h_1 | h_2 | h_3 | w_1 | w_2 | Torque to Nm max. | A/F | Clamping force kN max. | Weight g |
|--------------------|--------------|-----------------------|------------|----------------------|-------|-------|-------|-------|-------|-------|-------|-------------------|-----|------------------------|----------|
| 10960.W0260 | Clamp + Stop | 1,2 | 10 | 5 | 46 | 15 | 10,5 | 7,5 | 5 | 18 | 20 | 9 | 4 | 4 | 140 |
| 10960.W0262 | Clamp + Stop | 1,2 | 12 | 5 | 48 | 15 | 10,5 | 7,5 | 5 | 18 | 20 | 9 | 4 | 4 | 150 |
| 10960.W0264 | Clamp + Stop | 1,2 | 14 | 5 | 52 | 15 | 10,5 | 7,5 | 5 | 22 | 20 | 9 | 4 | 4 | 162 |
| 10960.W0266 | Clamp + Stop | 1,2 | 16 | 5 | 48 | 15 | 10,5 | 7,5 | 5 | 25 | 20 | 9 | 4 | 4 | 178 |
| 10960.W0268 | Clamp + Stop | 1,2 | 18 | 5 | 48 | 15 | 10,5 | 7,5 | 5 | 25 | 20 | 9 | 4 | 4 | 190 |





10980.1



Material

Body: steel (C45), black oxide finish.
 Jaw/cam: steel (42CrMo), tempered, black oxide finish.

Technical Notes

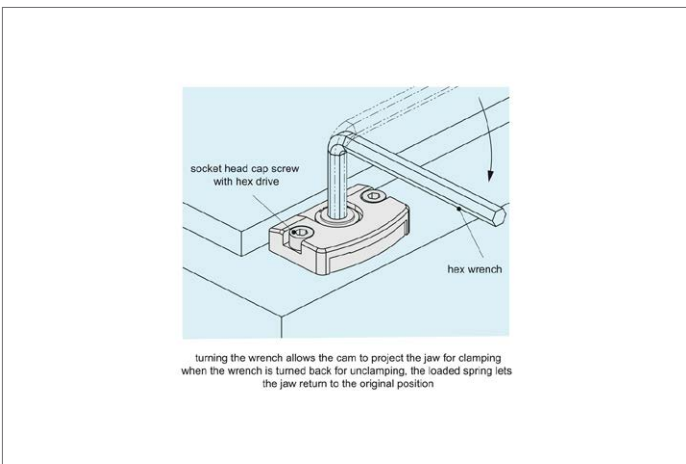
Designed to prevent part lift.

Turning the wrench allows the cam to move the jaw forward for clamping. When the wrench is turned back for unclamping, the loaded spring allows the jaw to return to the original position.

Tips

Ensure that mounting surfaces are finished to 6.3a or better, without any scratches or dents.

| Order No. | Clamping stroke s_1 | d_1 | l_1 | l_2 | l_3 | h_1 | h_2 | h_3 | h_4 | w_1 | w_2 | w_3 | w_4 | Torque to Nm max. | A/F | Clamping force kN max. | Weight g |
|-------------|-----------------------|-------|-------|-------|-------|-------|-------|-------|-------|-------|-------|-------|-------|-------------------|-----|------------------------|----------|
| 10980.W0038 | 1 | 5.2 | 33.5 | 30.5 | 15 | 10 | 6 | 3 | 5 | 45 | 38 | 8 | 36 | 10 | 6 | 4 | 85 |
| 10980.W0060 | 2 | 8.2 | 50.0 | 46.0 | 22 | 15 | 9 | 5 | 7 | 70 | 60 | 12 | 55 | 27 | 10 | 6 | 290 |

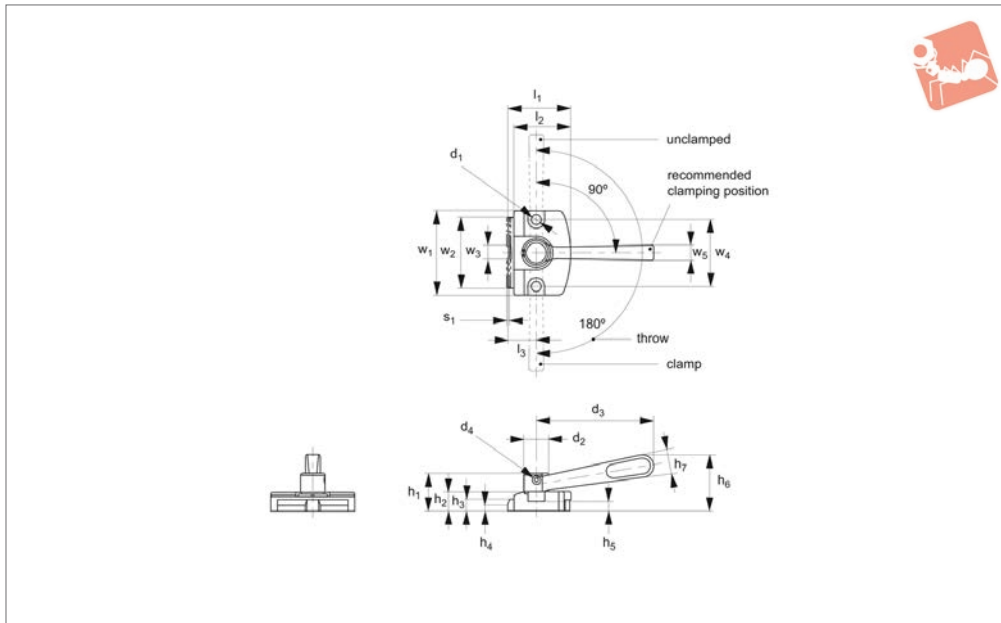




Low Profile Cam Edge Clamps

lever actuation

Low Profile Side Clamping



10980.2

LOW PROFILE SIDE CLAMPING

Material

Body: steel (C45), black oxide finish.
 Jaw/cam: steel (42CrMo), tempered, black oxide finish.
 Handle: steel (C45), tempered, black oxide finish.

Turning the wrench allows the cam to move the jaw forward for clamping. When the wrench is turned back for unclamping, the loaded spring allows the jaw to return to the original position.

Tips

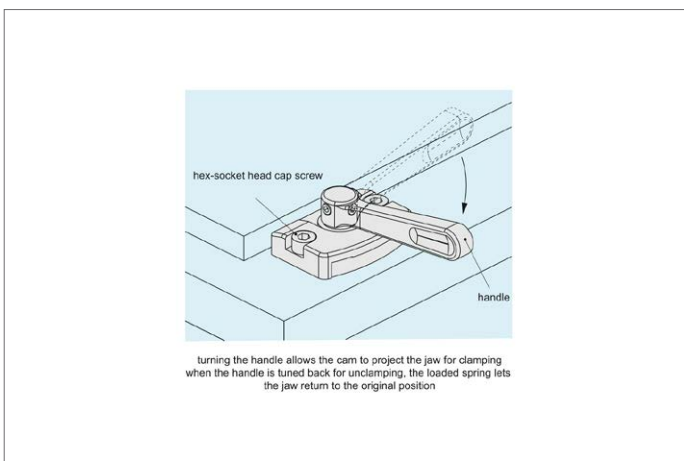
Ensure that mounting surfaces are finished to 6.3a or better, without any scratches or

Technical Notes

Designed to prevent part lift.

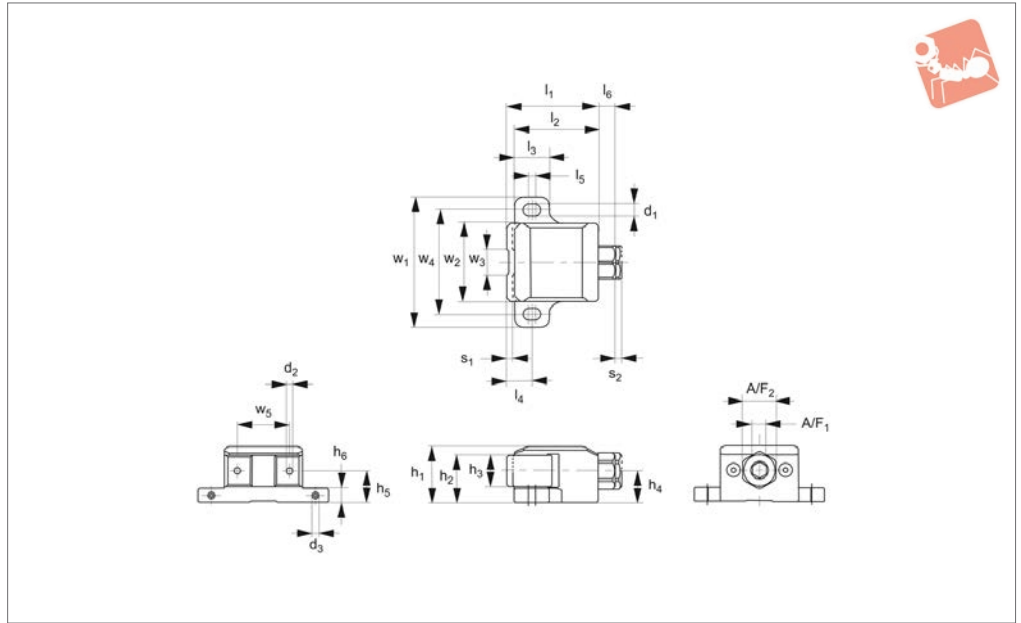
| Order No. | Clamping stroke s_1 | d_1 | d_2 | d_3 | d_4 | l_1 | l_2 | l_3 | Weight g |
|-------------|-----------------------|-------|-------|-------|------------|-------|-------|-------|----------|
| 10980.W0138 | 1 | 5.2 | 13 | 63 | M 4x0,7-4L | 33.5 | 30.5 | 15 | 130 |
| 10980.W0160 | 2 | 8.2 | 19 | 100 | M 5x0,8-5L | 50.0 | 46.0 | 22 | 440 |

| Order No. | h_1 | h_2 | h_3 | h_4 | h_5 | h_6 | h_7 | w_1 | w_2 | w_3 | w_4 | w_5 | Torque to Nm max. | Clamping force kN max. |
|-------------|-------|-------|-------|-------|-------|-------|-------|-------|-------|-------|-------|-------|-------------------|------------------------|
| 10980.W0138 | 20 | 10 | 6 | 3 | 5 | 30 | 12 | 45 | 38 | 8 | 36 | 8 | 17 | 4 |
| 10980.W0160 | 30 | 15 | 9 | 5 | 7 | 46 | 18 | 70 | 60 | 12 | 55 | 12 | 28 | 6 |





10982.1



Material

Body: steel (C45), black oxide finish.
 Jaw: steel (42CrMo), tempered. Black oxide finish. Precision ground.
 Shaft: steel (42CrMo), black oxide finish.

long clamping stroke and firm clamping. The precision-ground jaw is perfect for clamping the workpiece on its finished surface. The jaw provides downward force to prevent part lift.

Tips

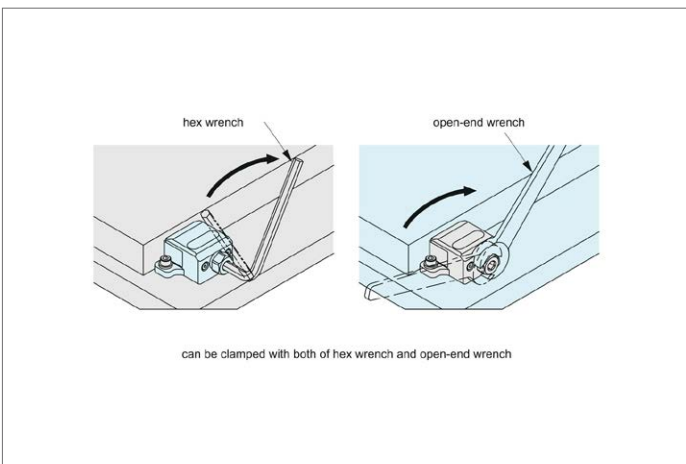
Can be clamped with both hex wrench and spanner.

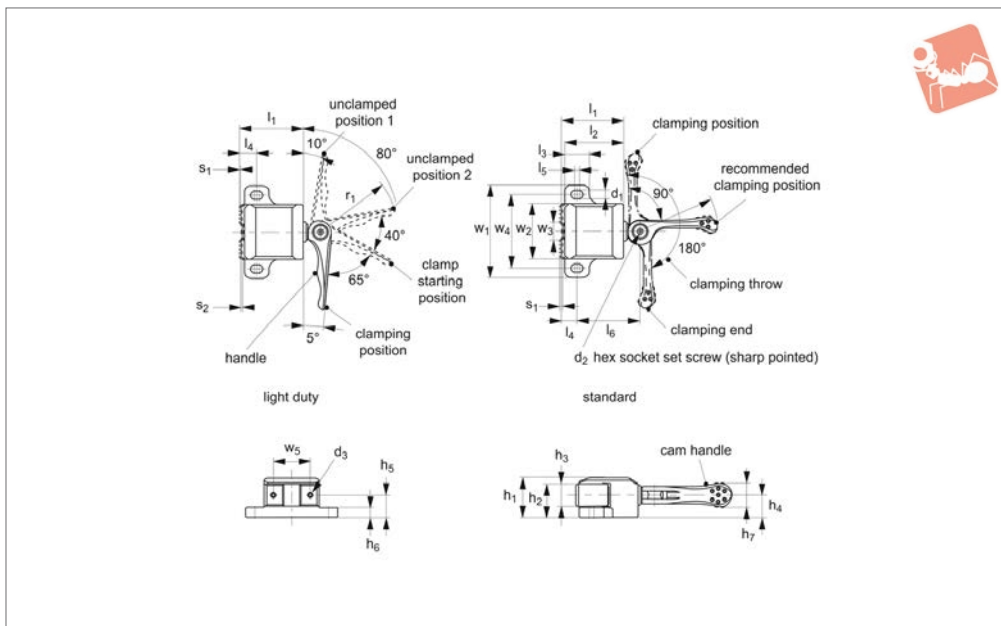
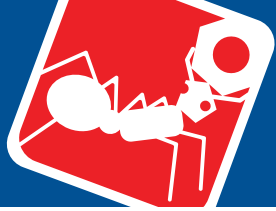
Technical Notes

A screw type clamping mechanism allows a

| Order No. | Clamping stroke s_1 | d_1 | d_2 | d_3 | l_1 | l_2 | l_3 | l_4 | l_5 | l_6 | h_1 | h_2 | h_3 | Weight g |
|-------------|-----------------------|-------|-----------------|------------|-------|-------|-------|-------|-------|-------|-------|-------|-------|----------|
| 10982.W0045 | 3 | 6.6 | M 4x0,7 Depth 6 | M 4x0,7-6L | 52 | 48 | 20 | 14 | 3 | 10 | 32 | 27 | 18 | 560 |
| 10982.W0060 | 4 | 8.6 | M 5x0,8 Depth 8 | M 5x0,8-8L | 69 | 63 | 26 | 19 | 4 | 13 | 40 | 33 | 22 | 1240 |

| Order No. | h_4 | h_5 | h_6 | w_1 | w_2 | w_3 | w_4 | w_5 | s_2 | Torque to Nm max. | A/F ₁ | A/F ₂ | Clamping force kN max. |
|-------------|-------|-------|-------|-------|-------|-------|-------|-------|-------|-------------------|------------------|------------------|------------------------|
| 10982.W0045 | 18 | 18 | 8 | 75 | 45 | 15 | 60 | 30 | 3 | 25 | 8 | 19 | 9 |
| 10982.W0060 | 22 | 22 | 10 | 100 | 60 | 20 | 80 | 40 | 4 | 50 | 10 | 24 | 14 |





10982.2

LOW PROFILE SIDE CLAMPING

Material

Body: steel (C45), black oxide finish.
 Jaw/handle shaft: steel (C45), tempered.
 Black oxide finish, precision-ground.
 Handle: steel (42CrMo), tempered. Electroless nickel plated (light-duty type), black

oxide finish (standard type).

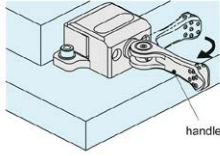
Technical Notes

The cam handle allows fast clamping in a single operation. Spring-loaded light duty version distributes constant clamping

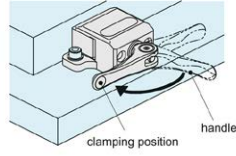
force. Standard version allows the adjustment of clamping force depending on operating loads. Precision-ground jaw is perfect for clamping the workpiece on its finished surface. The jaw provides downward force to prevent part lift.

| Order No. | Type | Clamping stroke s_1 | d_1 | d_2 | d_3 | l_1 | l_2 | l_3 | l_4 | l_5 | l_6 | h_1 | h_2 | Weight g |
|-------------|------------|-----------------------|-------|--------------------|----------------|-------|-------|-------|-------|-------|-------|-------|-------|----------|
| 10982.W0145 | Light Duty | 0.3 | - | - | - | - | - | - | - | - | - | - | - | 600 |
| 10982.W0160 | Light Duty | 0.4 | - | - | - | - | - | - | - | - | - | - | - | 1320 |
| 10982.W0245 | Standard | 1.6 | 6.6 | M 4x0,7 6 Depth | M 4x0,7- 5L | 51 | 48 | 20 | 13 | 3 | 51.5 | 32 | 27 | 620 |
| 10982.W0260 | Standard | 2.2 | 8.6 | M 4x0,7 8 Depth | M 5x0,8- 6L | 67 | 63 | 25 | 17 | 4 | 67.0 | 40 | 33 | 1360 |

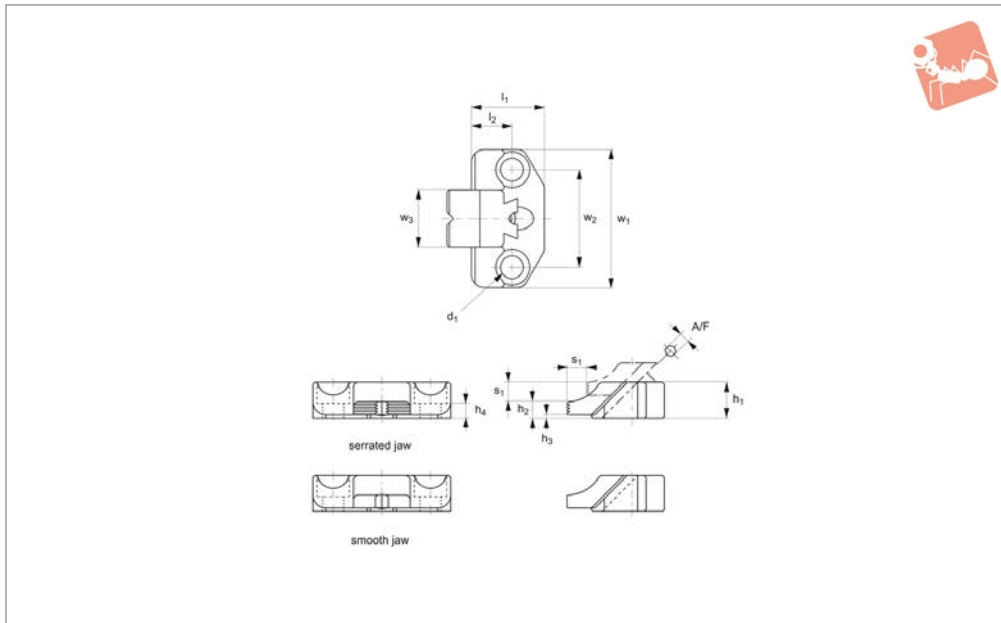
| Order No. | h_3 | h_4 | h_5 | h_6 | h_7 | w_1 | w_2 | w_3 | w_4 | w_5 | r_1 | Advance stroke s_2 | Clamping force kN max. | Operating load N max. |
|-------------|-------|-------|-------|-------|-------|-------|-------|-------|-------|-------|-------|----------------------|------------------------|-----------------------|
| 10982.W0145 | - | - | - | - | 14 | - | - | - | - | - | - | 0.8 | 0.6 | 40 |
| 10982.W0160 | - | - | - | - | 18 | - | - | - | - | - | - | 0.8 | 1.2 | 50 |
| 10982.W0245 | 18 | 18 | 18 | 8 | 19 | 75 | 45 | 15 | 60 | 30 | 63 | - | 2.0 | 150 |
| 10982.W0260 | 22 | 22 | 22 | 10 | 24 | 100 | 60 | 20 | 80 | 40 | 80 | - | 3.0 | 200 |



standard
turning the cam handle allows the jaw to advance to the workpiece for clamping



light duty
turning the handle to the clamping position clamps the workpiece with constant clamping force



10988

LOW PROFILE SIDE CLAMPING

Material

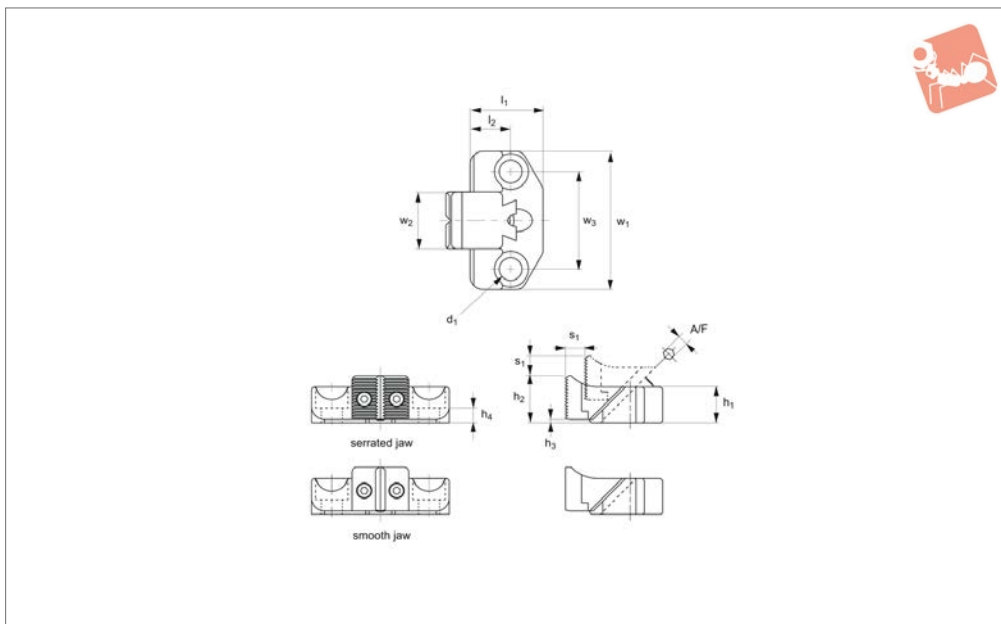
Body: steel (42CrMo), tempered. Black oxide finish.

Jaw: steel (42CrMo), induction hardened (clamping face). Black oxide finish. Precision ground (smooth jaw).

| Order No. | Type | d ₁ | l ₁ | l ₂ | h ₁ | h ₂ | h ₃ | h ₄ | w ₁ | w ₂ | w ₃ | Torque to Nm max. | Stroke s ₁ | A/F | Clamping force kN max. | Weight g |
|--------------------|----------|----------------|----------------|----------------|----------------|----------------|----------------|----------------|----------------|----------------|----------------|-------------------|-----------------------|-----|------------------------|----------|
| 10988.W0025 | Serrated | M 8 | 39.5 | 25 | 16 | 7.5 | 1.5 | 7 | 65 | 45 | 25 | 8 | 7 | 4 | 4 | 160 |
| 10988.W0035 | Serrated | M12 | 60.0 | 40 | 22 | 10.0 | 2.0 | 9 | 85 | 60 | 35 | 26 | 12 | 6 | 9 | 450 |
| 10988.W0040 | Serrated | M16 | 77.0 | 50 | 30 | 14.0 | 2.0 | 13 | 100 | 70 | 40 | 60 | 14 | 8 | 17 | 900 |
| 10988.W0125 | Smooth | M 8 | 39.5 | 25 | 16 | 7.5 | 1.5 | 7 | 65 | 45 | 25 | 8 | 7 | 4 | 4 | 160 |
| 10988.W0135 | Smooth | M12 | 60.0 | 40 | 22 | 10.0 | 2.0 | 9 | 85 | 60 | 35 | 26 | 12 | 6 | 9 | 450 |
| 10988.W0140 | Smooth | M16 | 77.0 | 50 | 30 | 14.0 | 2.0 | 13 | 100 | 70 | 40 | 60 | 14 | 8 | 17 | 900 |



10990

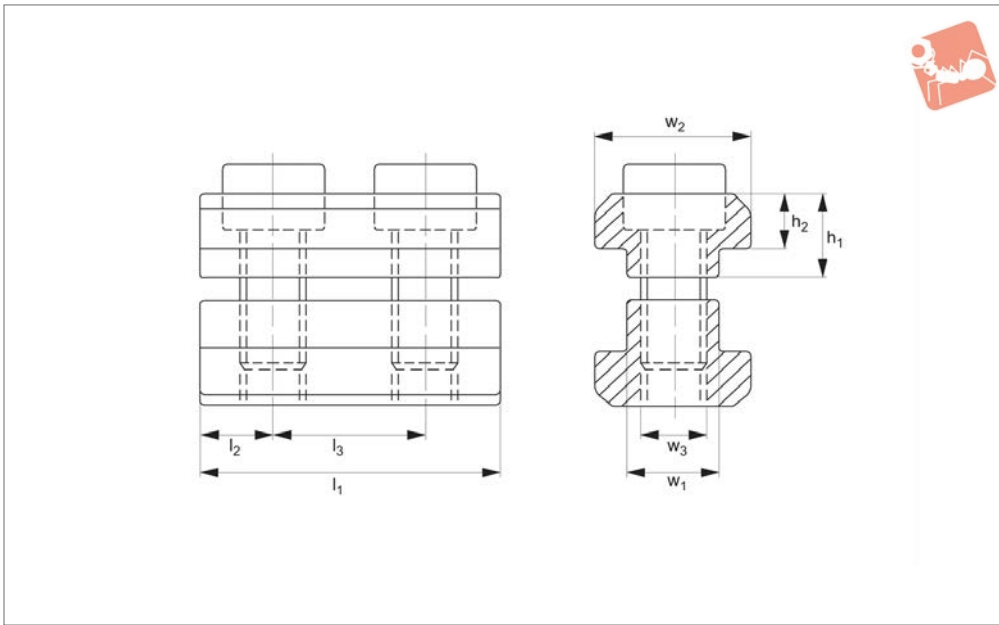


Material

Body: steel (42CrMo), tempered. Black oxide finish.

Jaw: steel (42CrMo), tempered, black oxide finish. Precision ground (smooth jaw).

| Order No. | Type | d ₁ | l ₁ | l ₂ | h ₁ | h ₂ | h ₃ | h ₄ | w ₁ | w ₂ | w ₃ | s ₁ | Torque to Nm max. | A/F | Clamping force kN max. | Weight g |
|--------------------|----------|----------------|----------------|----------------|----------------|----------------|----------------|----------------|----------------|----------------|----------------|----------------|-------------------|-----|------------------------|----------|
| 10990.W0025 | Serrated | M 8 | 39.5 | 25 | 16 | 19.5 | 1.5 | 7 | 65 | 25 | 45 | 7 | 8 | 4 | 4 | 180 |
| 10990.W0035 | Serrated | M12 | 60.0 | 40 | 22 | 29.0 | 2.0 | 9 | 85 | 35 | 60 | 12 | 26 | 6 | 9 | 500 |
| 10990.W0040 | Serrated | M16 | 77.0 | 50 | 30 | 38.0 | 2.0 | 13 | 100 | 40 | 70 | 14 | 60 | 8 | 17 | 1010 |
| 10990.W0125 | Smooth | M 8 | 39.5 | 25 | 16 | 19.5 | 1.5 | 7 | 65 | 25 | 45 | 7 | 8 | 4 | 4 | 180 |
| 10990.W0135 | Smooth | M12 | 60.0 | 40 | 22 | 29.0 | 2.0 | 9 | 85 | 35 | 60 | 12 | 26 | 6 | 9 | 510 |
| 10990.W0140 | Smooth | M16 | 77.0 | 50 | 30 | 38.0 | 2.0 | 13 | 100 | 40 | 70 | 14 | 60 | 8 | 17 | 1020 |



12000

LOW PROFILE SIDE CLAMPING

Material

Tempered steel, burnished.

transverse direction. Their low overall height allows use in applications with flat workpieces.

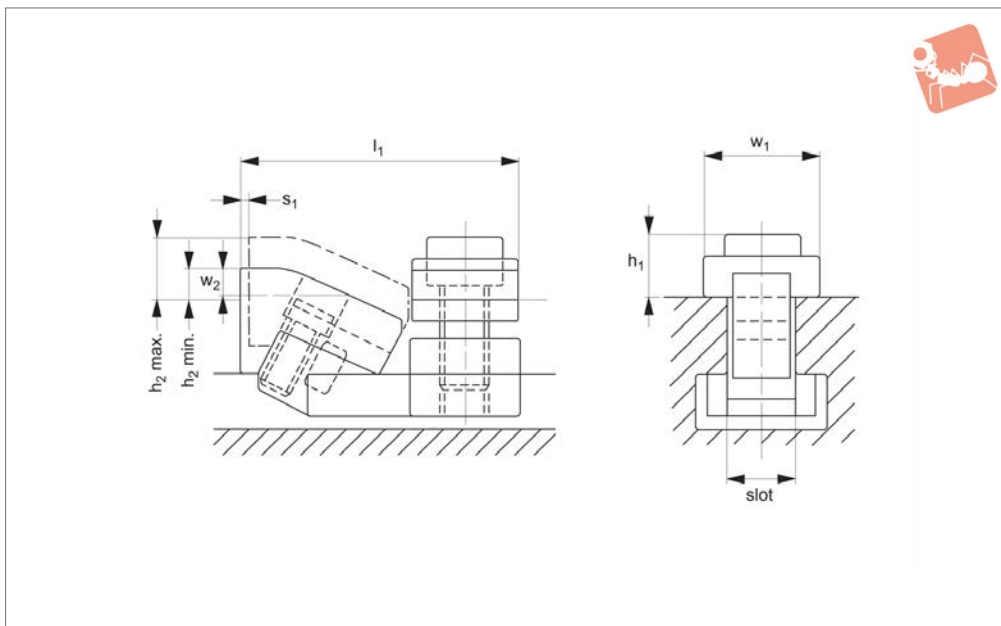
Technical Notes

The stops can be used in a longitudinal or

| Order No. | Slot size | l_1 | l_2 | l_3 | h_1 | h_2 | w_1 | w_2 | w_3 | Weight g |
|-------------|-----------|-------|-------|-------|-------|-------|-------|-------|-------|----------|
| 12000.W0012 | 12 | 36 | 9.0 | 18 | 12 | 7 | 11.7 | 18 | M 8 | 100 |
| 12000.W0014 | 14 | 44 | 11.0 | 22 | 12 | 8 | 13.7 | 22 | M 8 | 140 |
| 12000.W0016 | 16 | 50 | 12.5 | 25 | 15 | 9 | 15.7 | 25 | M12 | 240 |
| 12000.W0018 | 18 | 56 | 14.0 | 28 | 16 | 10 | 17.7 | 28 | M12 | 340 |
| 12000.W0020 | 20 | 64 | 16.0 | 32 | 19 | 12 | 19.7 | 32 | M16 | 520 |
| 12000.W0022 | 22 | 70 | 17.5 | 35 | 21 | 14 | 21.7 | 35 | M16 | 720 |
| 12000.W0024 | 24 | 80 | 20.0 | 40 | 23 | 16 | 23.7 | 40 | M20 | 880 |
| 12000.W0028 | 28 | 88 | 22.0 | 44 | 24 | 18 | 27.7 | 44 | M20 | 1460 |



12100



Material

Steel, heat-treated, blackened.

The clamps produce a downwards and forwards clamping force.

up to dimension „w₂“, via grinding.
Sold in pairs.

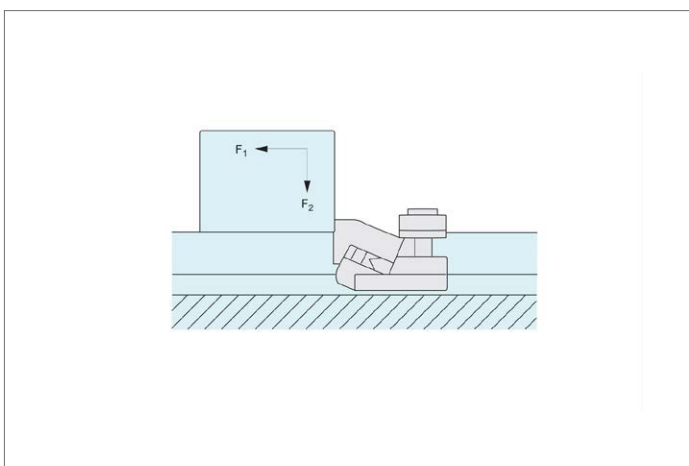
Technical Notes

Ideal for clamping low profile plates.

Tips

The clamp height can be further reduced by

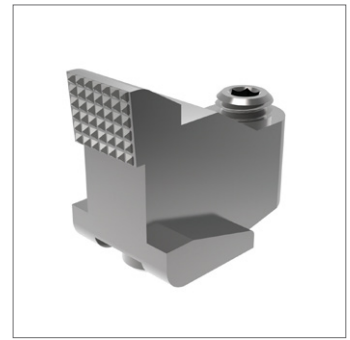
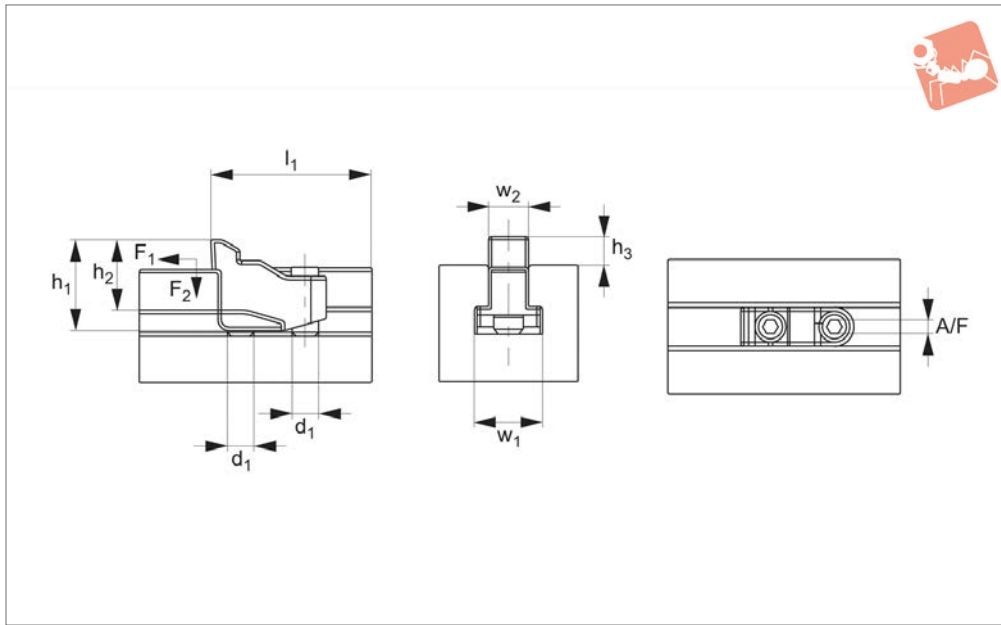
| Order No. | Slot size | F ₁ kN | F ₂ kN | l ₁ max. | h ₁ | h ₂ min. | h ₂ max. | w ₁ | w ₂ | Stroke s ₁ | Weight g |
|-------------|-----------|----------------------|----------------------|------------------------|----------------|------------------------|------------------------|----------------|----------------|-----------------------|-------------|
| 12100.W0012 | 12 | 5.0 | 0.6 | 52 | 11 | 2.5 | 13.5 | 18 | 5 | 1.8 | 300 |
| 12100.W0014 | 14 | 5.5 | 0.7 | 55 | 11 | 1.5 | 13.5 | 22 | 5 | 1.8 | 380 |
| 12100.W0016 | 16 | 8.0 | 0.9 | 68 | 15 | 2.5 | 17.0 | 25 | 6 | 2.5 | 700 |
| 12100.W0018 | 18 | 9.0 | 1.0 | 71 | 15 | 1.5 | 16.0 | 28 | 6 | 2.5 | 830 |
| 12100.W0022 | 22 | 16.0 | 1.9 | 89 | 20 | 4.5 | 21.5 | 35 | 9 | 3.0 | 1740 |





T-Slot Clamp with mounting

Low Profile Side Clamping



12105

LOW PROFILE SIDE CLAMPING

Material

Clamp: steel (AISI 4140), HRc 33-39, blackened.

Plate: stainless steel (AISI 304, 1.4301).

Technical Notes

Extremely small and low height cam clamp offering up to 14 kN. clamping force. Ideal for multi-component fixtures.

Clamp is actuated with use of a hexagon key.

To avoid any deformation to workpiece

during clamping, select our clamping plate type.

Also available with an easy to actuate clamping handle model - see parts 12108.W2012 through .W2116.

Spare clamping plates can be ordered separately, see part no. 12108.W5010 through .W5016.

Dimension w_5 is the recommended distance between mounting hole and workpiece.

Note: $w_5 + 1$ is required distance when

using clamping plates.

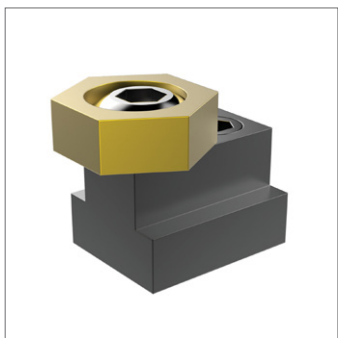
Tips

To install, drill and tap required hole to dimensions d_2 and space hole to dimension w_5 away from workpiece surface (or $w_5 + 1$ if using clamping plate).

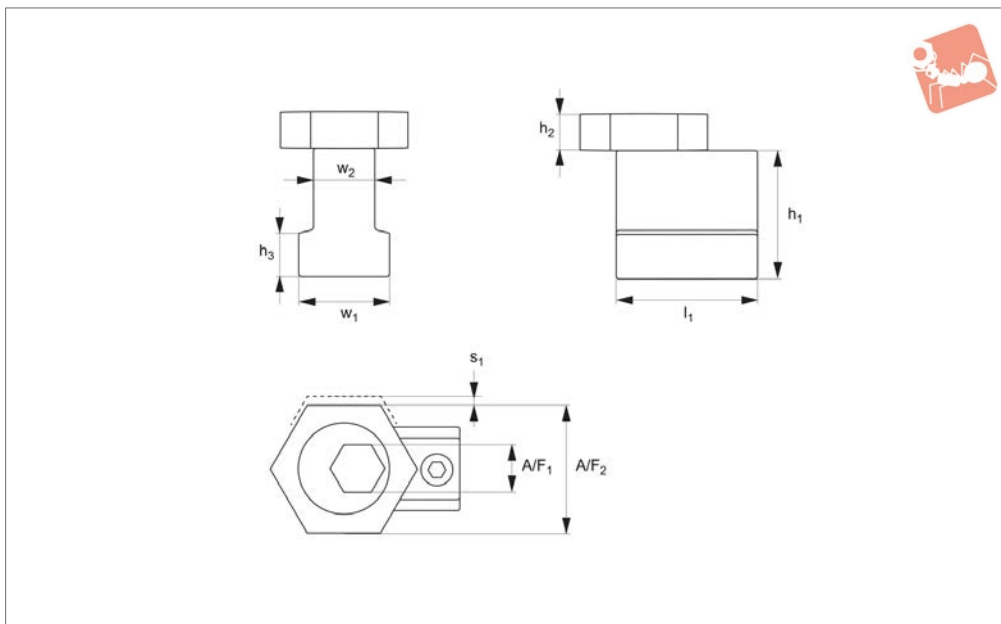
Fully tighten spiral clamp, then slacken off by one turn. Mount workpiece and then re-tighten clockwise to clamp workpiece.

Place a stop to the right of the workpiece to prevent movement.

| Order No. | Slot size | d_1 | F_1 kN | F_2 kN | l_1 | h_1 | h_2 | h_3 | w_1 | w_2 | A/F | Weight g |
|--------------------|-----------|-------|-------------|-------------|-------|-------|-------|-------|-------|-------|-----|-------------|
| 12105.W0012 | 12 | M10 | 7 | 3.5 | 40 | 31 | 24 | 10 | 22 | 13.6 | 5 | 91 |
| 12105.W0016 | 16 | M12 | 10 | 5.0 | 49 | 39 | 30 | 12 | 28 | 17.4 | 6 | 188 |
| 12105.W0020 | 18 | M16 | 16 | 8.0 | 63 | 50 | 37 | 15 | 35 | 21.5 | 8 | 363 |



12150



Material

Clamp: brass.
Body: steel heat treated.

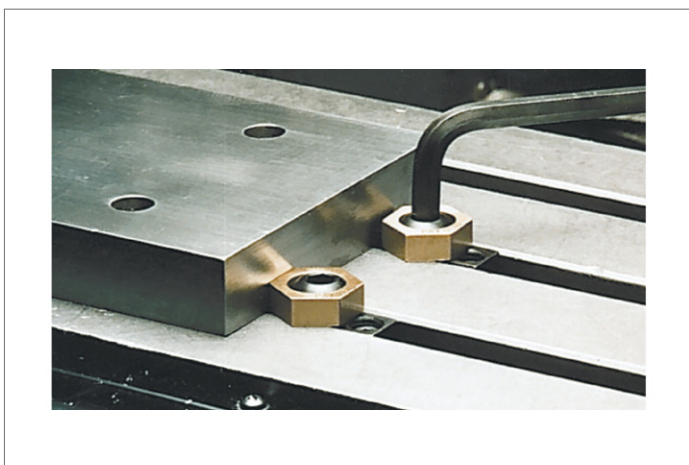
Tips

For replacement clamping screws see 12112.
Hex. key not included.
Sold in packs of 2.

Technical Notes

For use in T-slots of machine tables.

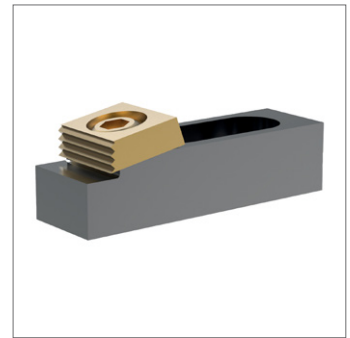
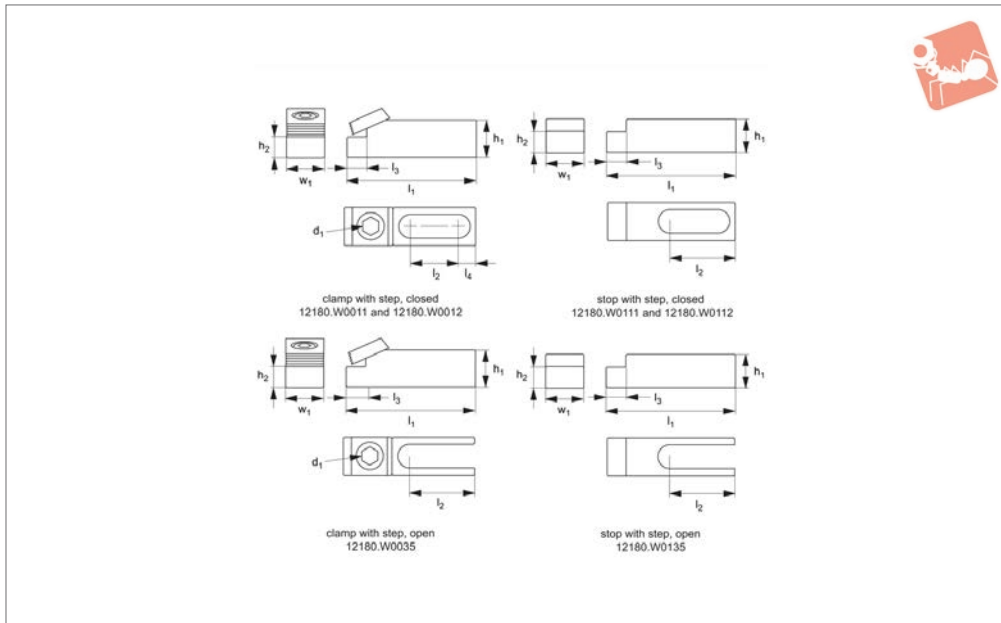
| Order No. | For T-slot | Cam screw | l_1 | h_1 | h_2 | h_3 | w_1 | w_2 | Torque to Nm max. | Stroke s_1 | A/F_1 | A/F_2 | Holding force kN |
|-------------|------------|-----------|-------|-------|-------|-------|-------|-------|-------------------|--------------|---------|---------|------------------|
| 12150.W0008 | 8 | M 6x1,00 | 23.2 | 9.5 | 4.8 | 4.6 | 12.7 | 8 | 8.5 | 1.01 | 5 | 15.9 | 3.5 |
| 12150.W0010 | 10 | M 6x1,00 | 23.2 | 14.2 | 4.8 | 4.3 | 14.2 | 10 | 8.5 | 1.01 | 5 | 15.9 | 3.5 |
| 12150.W0012 | 12 | M 8x1,25 | 27.9 | 15.9 | 4.8 | 6.4 | 15.9 | 12 | 11.3 | 1.01 | 5 | 20.6 | 3.3 |
| 12150.W0014 | 14 | M10x1,50 | 30.5 | 22.2 | 6.4 | 8.5 | 22.4 | 14 | 28.0 | 1.52 | 7 | 20.6 | 8.9 |
| 12150.W0016 | 16 | M12x1,75 | 30.9 | 22.2 | 9.5 | 9.2 | 25.4 | 16 | 61.0 | 2.03 | 8 | 25.4 | 13.3 |
| 12150.W0018 | 18 | M12x1,75 | 34.7 | 28.6 | 9.5 | 10.5 | 28.6 | 18 | 61.0 | 2.03 | 8 | 25.4 | 13.3 |
| 12150.W0020 | 20 | M16x2,00 | 39.2 | 31.8 | 12.7 | 12.6 | 31.8 | 20 | 135.0 | 2.54 | 12 | 30.2 | 26.7 |
| 12150.W0022 | 22 | M16x2,00 | 44.3 | 41.3 | 12.7 | 12.5 | 34.9 | 22 | 135.0 | 2.54 | 12 | 30.2 | 26.7 |





Multi-Fixture Clamps and Stops with locating step

Low Profile Side Clamping



12180.1

LOW PROFILE SIDE CLAMPING

Material

Body: steel, hardened.
Clamp: brass.

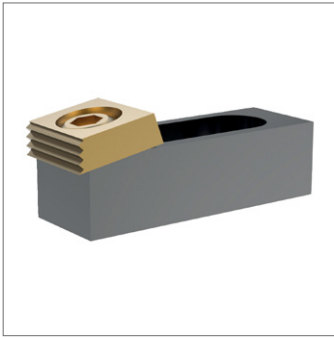
threaded holes and in T-slots. Can be mounted vertically or horizontally. Typically used as a clamp and stop pair - please order separately.

Technical Notes

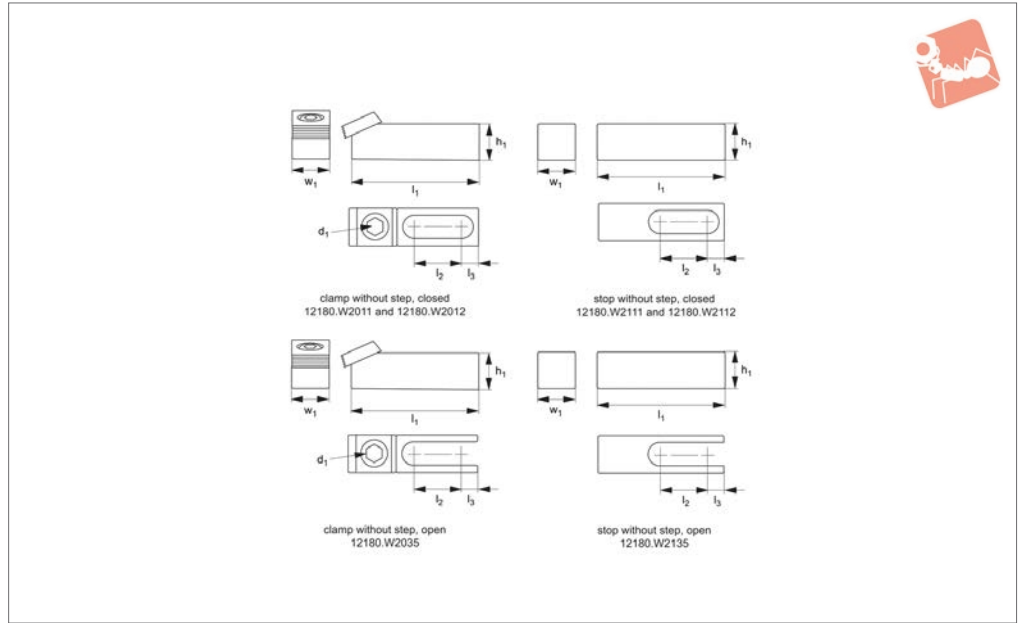
Enables flexible setups. For use in both

| Order No. | Type | Slot type | Mounting screw | d ₁ cam screw | l ₁ | l ₂ | l ₃ | l ₄ | h ₁ | h ₂ +0.0 -0.013 | w ₁ | Torque to Nm max. | Stroke | For use with | Holding force kN |
|--------------------|-------------------|-----------|----------------|--------------------------|----------------|----------------|----------------|----------------|----------------|-------------------------------|----------------|-------------------|--------|--------------|------------------|
| 12180.W0011 | Clamp - With Step | Closed | M 8 | M 8 | 63,5 | 21,1 | 8,0 | 13,5 | 15,8 | 11,68 | 19,1 | 28 | 1,6 | 12180.W0111 | 8,9 |
| 12180.W0012 | Clamp - With Step | Closed | M12 | M12 | 95,3 | 42,7 | 9,4 | 12,7 | 15,8 | 12,19 | 28,5 | 88 | 2,0 | 12180.W0112 | 17,8 |
| 12180.W0035 | Clamp - With Step | Open | M16 | M16 | 107,0 | 46,2 | 9,4 | | 41,2 | 35,0 | 38,1 | 135 | 2,5 | 12180.W0135 | 26,7 |
| 12180.W0111 | Stop - With Step | Closed | M 8 | | 63,5 | 28,2 | 8,0 | 13,5 | 19,1 | 11,68 | 19,1 | | | 12180.W0011 | |
| 12180.W0112 | Stop - With Step | Closed | M12 | | 95,3 | 42,7 | 9,4 | 12,7 | 22,1 | 12,19 | 28,5 | | | 12180.W0012 | |
| 12180.W0135 | Stop - With Step | Open | M16 | | 107,0 | 46,2 | 9,4 | | 50,8 | 35,0 | 38,1 | | | 12180.W0035 | |





12180.2



Material

Body: steel, hardened.
Clamp: brass.

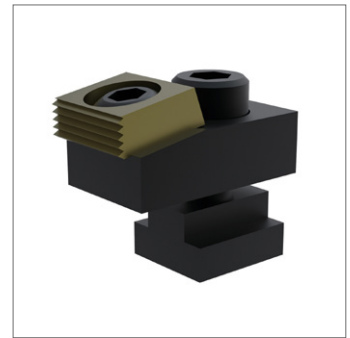
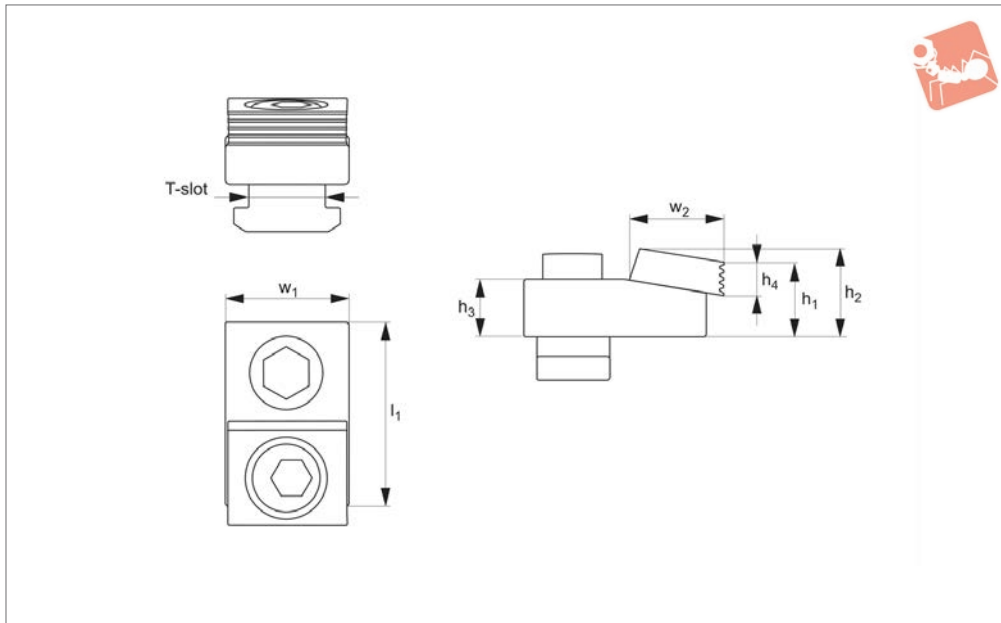
threaded holes and in T-slots. Can be mounted vertically or horizontally.
Typically used as a clamp and stop pair - please order separately.

Technical Notes

Enables flexible setups. For use in both

| Order No. | Type | Slot type | Mounting screw | Cam screw d_1 | l_1 | l_2 | l_3 | h_1 | w_1 | Torque to Stroke Nm max. | For use with | Holding force kN | |
|--------------------|------------------|-----------|----------------|-----------------|-------|-------|-------|-------|-------|-----------------------------|--------------|---------------------|------|
| 12180.W2011 | Clamp - w/o Step | Closed | M 8 | M 8 | 54,9 | 21,1 | 13,5 | 15,8 | 19,1 | 28 | 1,6 | 12180.W2111 | 8,9 |
| 12180.W2012 | Clamp - w/o Step | Closed | M12 | M12 | 58,6 | 42,7 | 12,7 | 15,8 | 28,5 | 88 | 2,0 | 12180.W2112 | 17,8 |
| 12180.W2035 | Clamp - w/o Step | Open | M16 | M16 | 96,5 | 46,2 | | 41,2 | 38,1 | 135 | 2,5 | 12180.W2135 | 26,7 |
| 12180.W2111 | Stop - w/o Step | Closed | M 8 | | 55,9 | 28,2 | 13,5 | 19,1 | 19,1 | | | 12180.W2011 | |
| 12180.W2112 | Stop - w/o Step | Closed | M12 | | 83,5 | 42,7 | 12,7 | 22,1 | 28,5 | | | 12180.W2012 | |
| 12180.W2135 | Stop - w/o Step | Open | M16 | | 83,8 | 46,2 | | 50,8 | 38,1 | | | 12180.W2035 | |





12191

LOW PROFILE SIDE CLAMPING

Material

Steel hardened face.

Technical Notes

Designed to be used in the T-slots of machine tables.

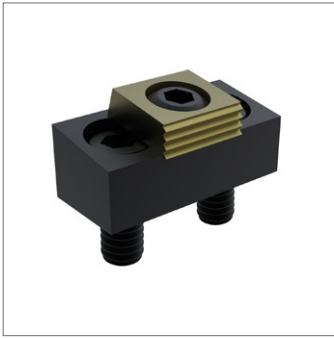
The clamp has both a smooth face (for machined workpieces) and a serrated face (for rougher work). Provides a positive downhold action whilst maintaining a low profile.

Tips

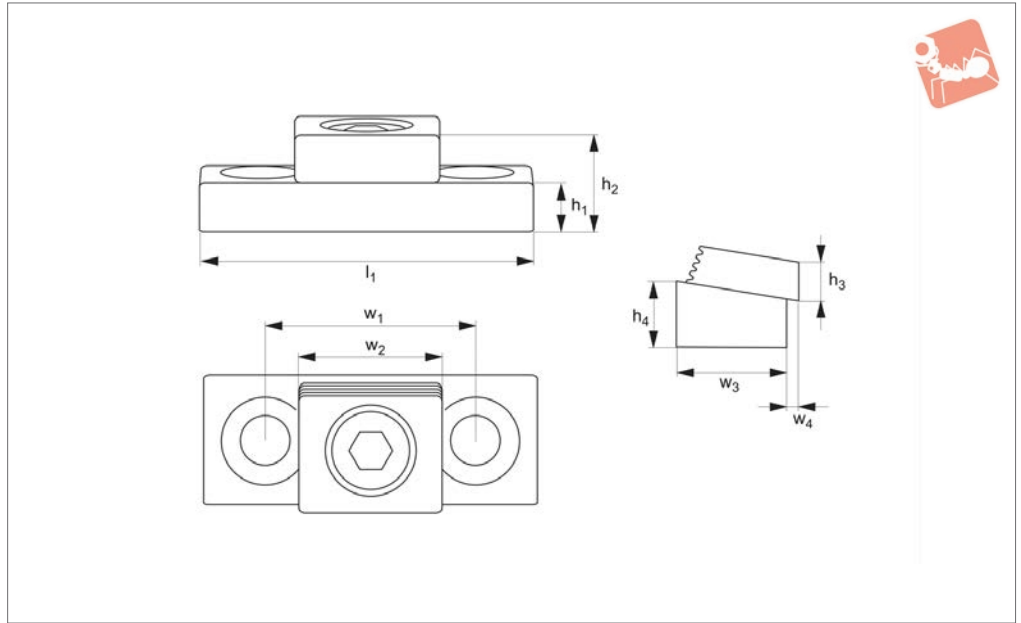
Torque screw for T-slot nut to 150 Nm.
*Not supplied with T-nut or mounting screw.

| Order No. | T-slot size | l_1 | h_1 | h_2 | h_3 | h_4 | w_1 | w_2 | Torque to Nm max. | Stroke s_1 | Holding force kN |
|-------------|-------------|-------|-------|-------|-------|-------|-------|-------|-------------------|--------------|------------------|
| 12191.W0000 | * | 50 | 25.4 | 22.2 | 15.7 | 9.6 | 28.5 | 25.4 | 88 | 1.6 | 17.8 |
| 12191.W0014 | 14 | 50 | 25.4 | 22.2 | 15.7 | 9.6 | 28.5 | 25.4 | 88 | 1.6 | 17.8 |
| 12191.W0016 | 16 | 50 | 25.4 | 22.2 | 15.7 | 9.6 | 28.5 | 25.4 | 88 | 1.6 | 17.8 |
| 12191.W0018 | 18 | 50 | 25.4 | 22.2 | 15.7 | 9.6 | 28.5 | 25.4 | 88 | 1.6 | 17.8 |





12193



Material

Clamping face: steel, hardened.
Body: mild steel, blackened.

Technical Notes

The clamp has both a smooth face (for machined workpieces) and a serrated face (for rougher work).

Provides a positive downhold action whilst maintaining a low profile.

Tips

The height of the clamp can be varied by milling the slot deeper into the fixture.

Important Notes

w_3 - the distance between the front of the clamp base and the workpiece. Drill and tap the centreline of „ w_1 “ for mounting holes.

For replacement cam screws see part 12112.

| Order No. | Clamp screw | Mounting screw | l_1 | h_1 | h_2 | h_3 | h_4 | w_1 | w_2 | w_3 | w_4 | Torque to Nm max. | Stroke | Holding force kN |
|-------------|-------------|----------------|-------|-------|-------|-------|-------|-------|-------|-------|-------|-------------------|--------|------------------|
| 12193.W0110 | M 8 | M 8 | 43.2 | 12.7 | 21.5 | 6.4 | 15.75 | 25.4 | 19.0 | 19.0 | 2.3 | 28 | 1.6 | 8.9 |
| 12193.W0112 | M10 | M10 | 54.0 | 11.4 | 24.4 | 9.7 | 15.75 | 33.5 | 25.4 | 25.4 | 2.8 | 88 | 2.0 | 17.8 |
| 12193.W0116 | M12 | M12 | 75.0 | 25.2 | 43.2 | 12.7 | 31.75 | 50.8 | 38.1 | 38.1 | 3.3 | 135 | 2.5 | 26.7 |

