



# Modular Screw Jacks

how to use

**15370 - 15374**  
Clamping & Height Setting

With the modular screw jack your production becomes even more flexible and economical. When combined you can achieve a maximum height of 1620mm.

- Maximum height of 1620mm.
- Quick set-up time.

## Benefits

## The Elements

- 1 Bearing pads, 15374.W0075, 15374.W0175, 15374.W0275
- 2 Screw jack, 15370.W0040, 15372.W0023
- 3 Spacer, 15370.W0116, 15370.W0126, 15370.W0135
- 4 Base, 15370.W0236, 15370.W0356, 15370.W0456
- 5 Thread adapter, 15374.W0016, 15374.W0020, 15374.W0024



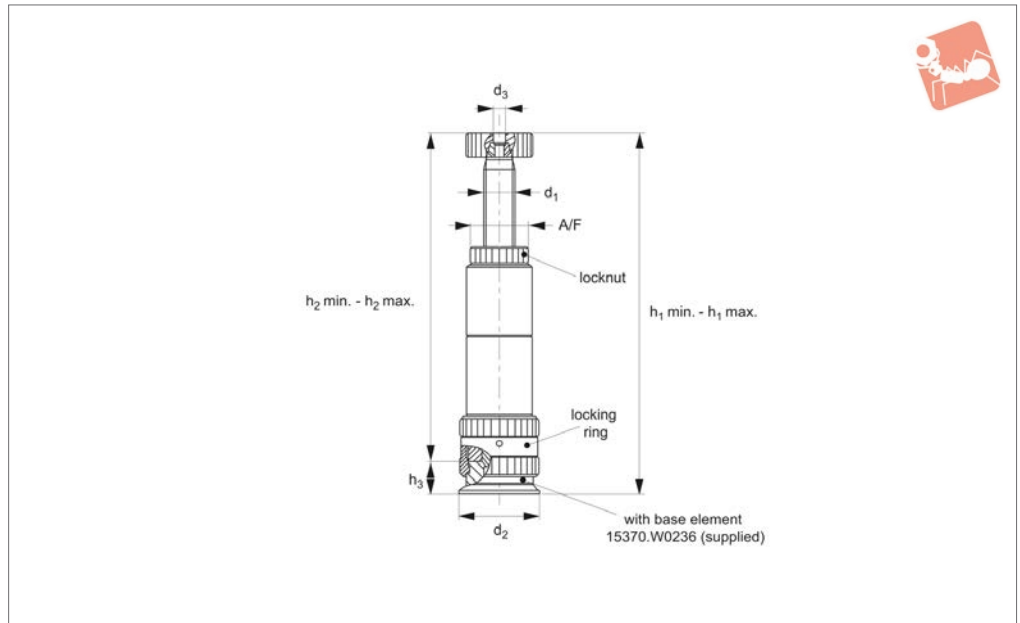
SCREW JACKS



SCREW JACKS



**15370.1**



**Material**

Steel, tempered, burnished.

**Technical Notes**

Can be used on T-slots and grid plates by means of adapters which are screwed in the base element. The individual elements are

joined together and connected by means of a threaded ring. The insertion tool makes it possible to use the locknut and base element as well as a thread adapter.

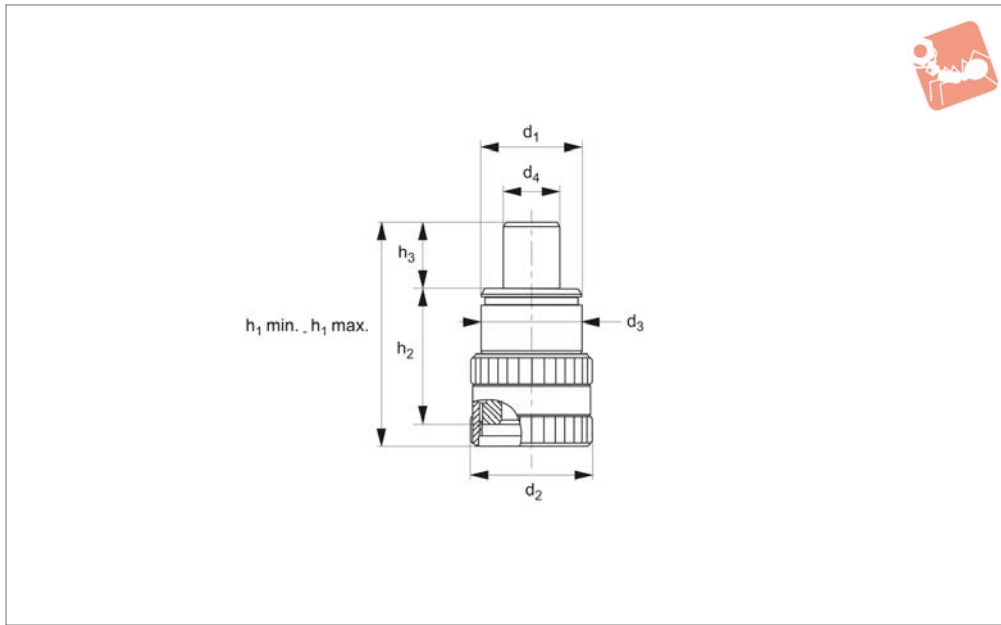
**Tips**

Can be used with other elements to achieve

heights of up to 1.6 metres, with a max. load of 60 kN. Observe possible buckling loads.

**Do not adjust screw jacks under load.**

Order No.	$h_1$ min.	$h_1$ max.	$h_2$ min.	$h_2$ max.	$h_3$	$d_1$	$d_2$	$d_3$	A/F	F kN max.	Weight g
15370.W0040	306	406	270	370	36	40x7	90	12	65	60	9436



## 15370.2

SCREW JACKS

### Material

Steel, tempered, burnished.

can allow stopless height range of up to 1620mm.

load of 60 kN. Observe possible buckling loads.

### Technical Notes

These spacer elements are used with modular screw jacks 15370. Using the item

### Tips

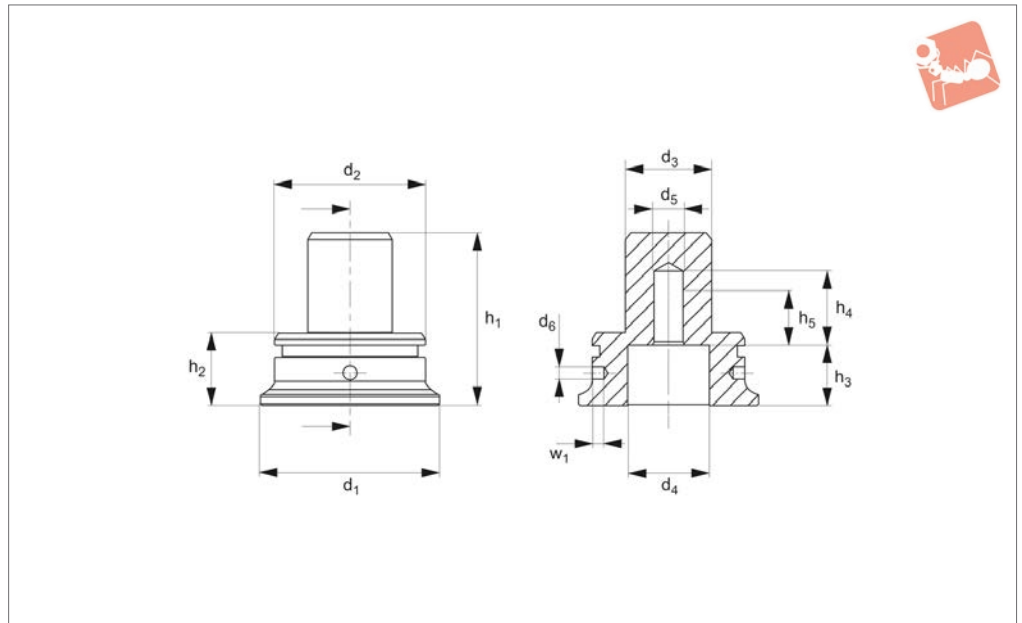
Can be used with other elements to achieve heights of up to 1.6 metres, with a max.

**Do not adjust screw jacks under load.**

Order No.	$h_1$ min.	$h_1$ max.	$h_2$	$h_3$	$d_1$	$d_2$	$d_3$	$d_4$	Weight g
15370.W0116	150	166.5	100	50	M76x3	89	75	42.5	3132
15370.W0126	250	266.5	200	50	M76x3	89	75	42.5	6228
15370.W0135	350	366.5	300	50	M76x3	89	75	42.5	7493



**15370.3**



**Material**

Steel, tempered, burnished.

**Technical Notes**

Can be used on T-slots and grid plates by

means of adapters which are screwed in the base element. The individual elements are easily joined together with threaded ring ensuring process reliability.

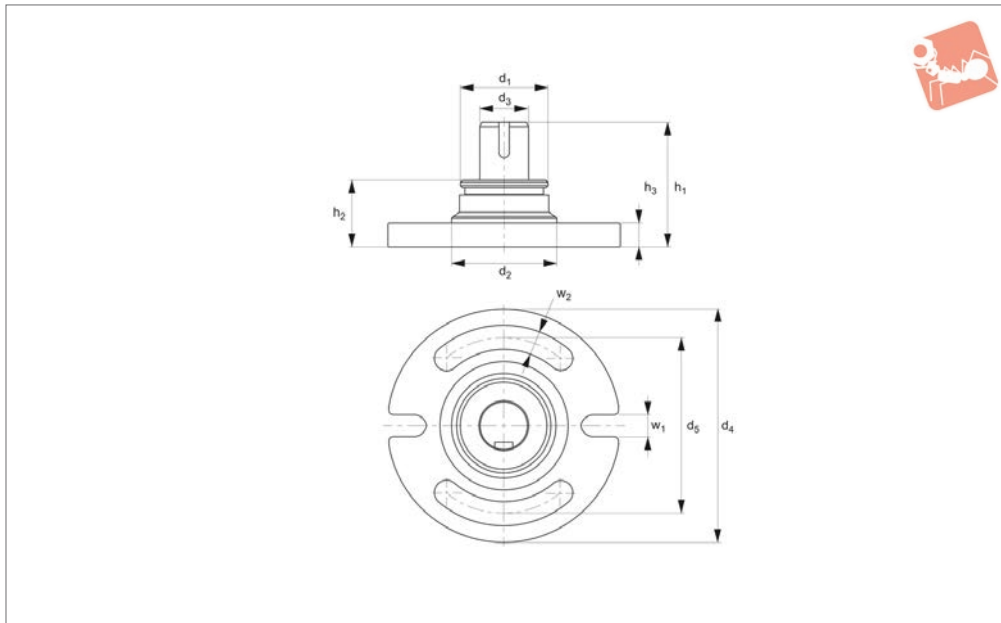
Order No.	$h_1$	$h_2$	$h_3$	$h_4$	$h_5$	$w_1$	$d_1$	$d_2$	$d_3$	$d_4$	$d_5$	$d_6$	Weight g
15370.W0236	86	36	30	37	27	6	90	M76x3	42.5	41	M16	6.2	1497



# Modular Screw Jack Base

adjustable

## Screw Jacks



**15370.4**

SCREW JACKS

### Material

Steel, tempered, burnished.

### Technical Notes

Can be used on T-slots and grid plates. The

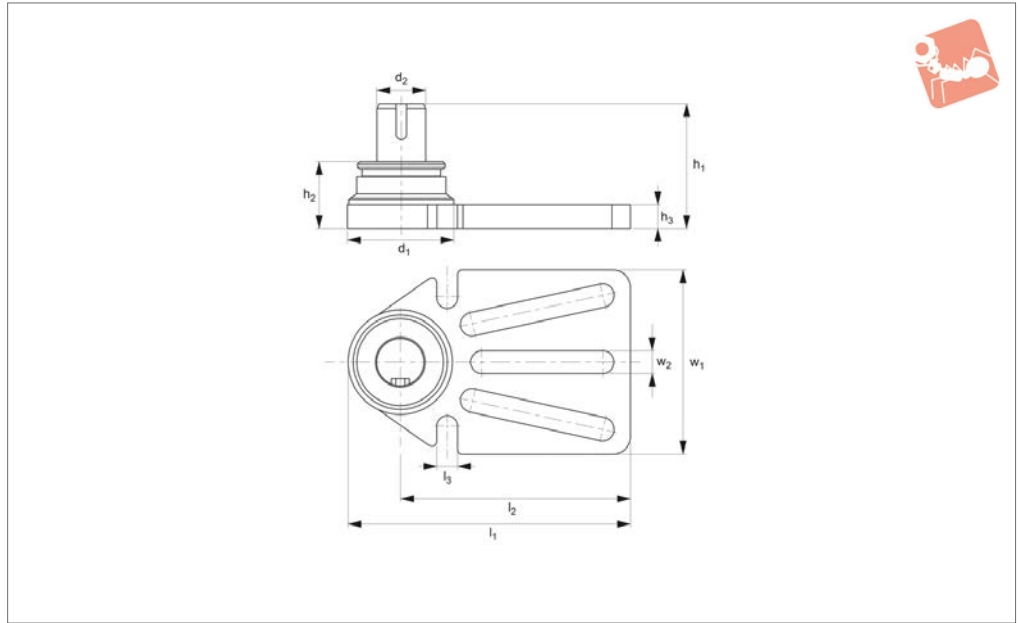
individual elements are easily joined together.

Enables easy positioning on a machine table.

Order No.	$h_1$	$h_2$	$h_3$	$w_1$	$w_2$	$d_1$	$d_2$	$d_3$	$d_4$	$d_5$	Weight g
15370.W0356	106	56	20	17	20	M76x3	90	42.5	200	150	5717



**15370.5**



SCREW JACKS

**Material**

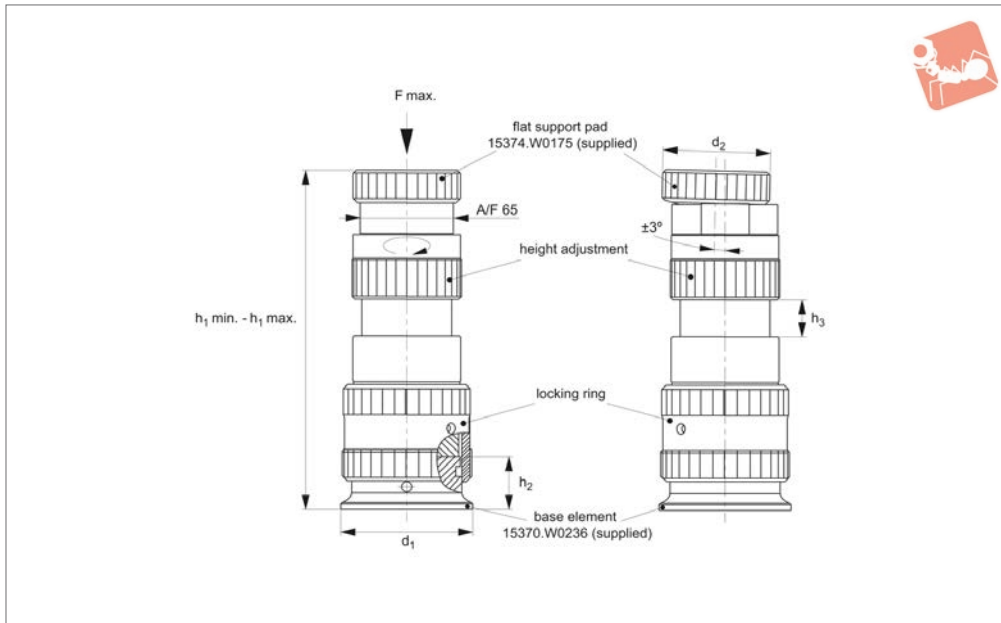
Steel, tempered, burnished.

Enables easy positioning on a machine table.

**Technical Notes**

Can be used on T-slots and grid plates.

Order No.	$h_1$	$h_2$	$h_3$	$w_1$	$w_2$	$d_1$	$d_2$	$l_1$	$l_2$	$l_3$	Weight g
15370.W0456	106	56	20	158.5	20	90	42.5	240	195	17	5652



## 15372

SCREW JACKS

### Material

Body and base: steel, tempered, burnished.

Spindle and bearing: steel, tempered, plasma-nitrided and burnished.

### Technical Notes

Can be used on T-slots and grid plates by means of adapters which are screwed in the base element with a spacer element. This

support can be finely adjusted to a maximum height of 330mm under load. The bearings can be adjusted with an angle of  $\pm 3^\circ$ . Used as an extra support point to prevent sag and vibration of the workpiece. As it is mounted directly under a clamping point, distortion of the work-piece is prevented.

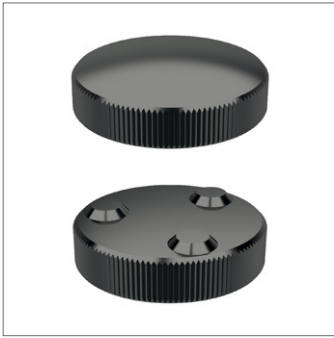
For use in horizontal and vertical clamping.

### Tips

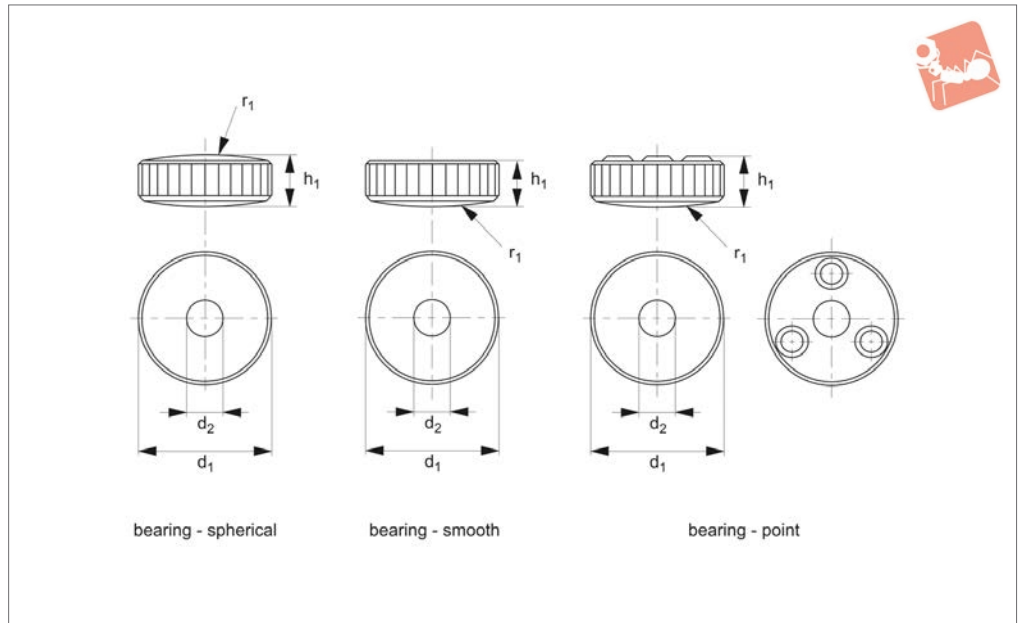
**Maximum height 330mm when used with additional spacer 15370.W0116.**

Three different bearings are held in place by magnets. Bearings are interchangeable.

Order No.	$h_1$ min.	$h_1$ max.	$h_2$	$d_1$	$d_2$	Stroke $h_3$	F kN max.	Weight g
15372.W0023	210	230	36	90	75	20	35	6671



**15374.1**



**Material**

Steel, tempered, plasma-nitrided and burnished.

**Technical Notes**

Interchangeable top bearing for the fine

thread modular screw jack 15537.2.

Compensation of large work-piece tolerances.

For use in horizontal and vertical clamping.

Order No.	Bearing type	$h_1$	$d_1$	$d_2$	$r_1$	Weight g
15374.W0075	Spherical	24.7	75	20.5	140	655
15374.W0175	Smooth	24.7	75	20.5	140	739
15374.W0275	Point	24.7	75	20.5	140	651

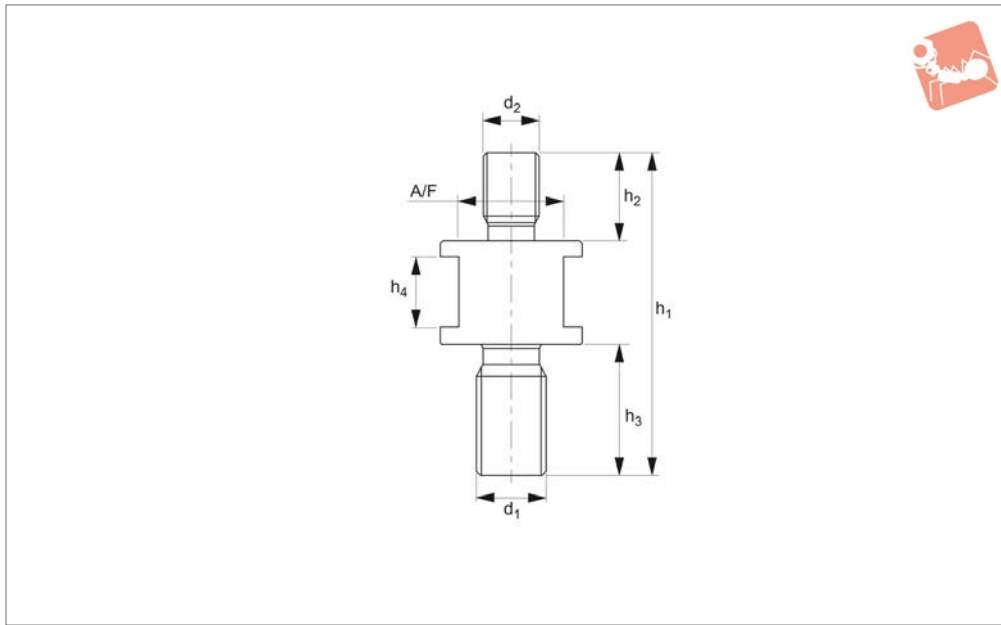




# Threaded Adapters

for modular screw jacks

## Screw Jacks



**15374.2**

SCREW JACKS

### Material

Steel, tempered and burnished.

base element allowing easy fixing to T-slots and grid plates.

### Technical Notes

The thread adapters are screwed in the

Order No.	$h_1$	$h_2$	$h_3$	$h_4$	$d_1$	$d_2$	A/F	Weight g
<b>15374.W0016</b>	83.5	25	29	20	M16	M16	30	339
<b>15374.W0020</b>	91.5	25	37	20	M20	M16	30	381
<b>15374.W0024</b>	101.5	25	47	20	M24	M16	30	452