

14000

SCREW JACKS

Material

Heat-treated steel, enamelled.

Technical Notes

When used as a pair, these blocks are

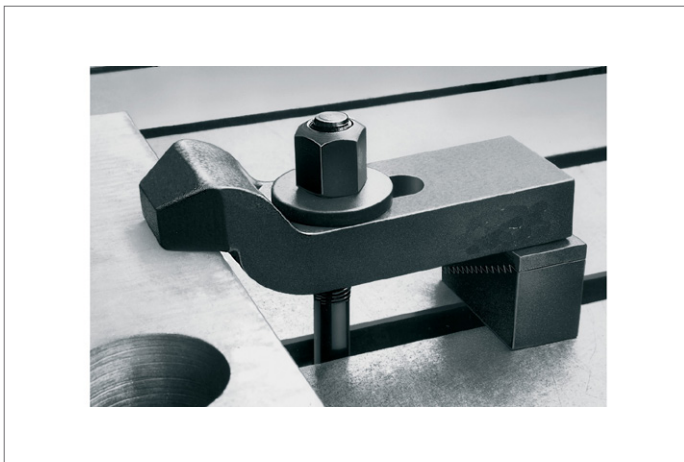
compatible with all our clamps. However, when used individually, they can be used with clamp no. 10020.
Step increments: vertical 4,65mm,

horizontal 2,30mm.

Tips

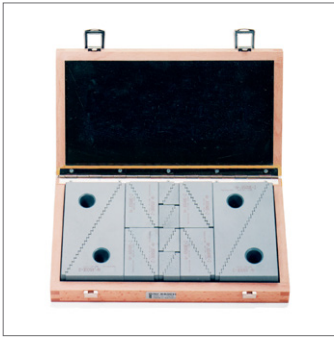
Sold individually. Dimensions h_1 and h_2 are when step blocks used as a pair.

Order No.	Size	h_1 max.	h_2	w_1	l_1	l_2 min.	Weight g
14000.W0001	1	51	33	30	19.0	23	90
14000.W0002	2	107	66	30	35.5	39	300
14000.W0003	3	208	131	30	68.0	71	1050





SCREW JACKS



14020



Material

Steel, tempered and enamelled.

Technical Notes

In a sturdy wooden case with lid. Please

refer to product no. 14000 for more information regarding the contents of the set.

Tips

When used as a pair, these blocks are

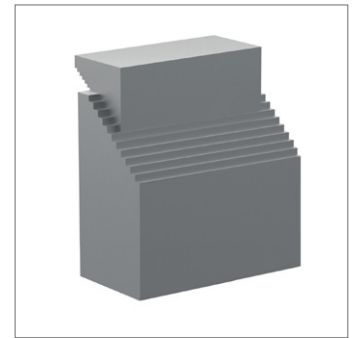
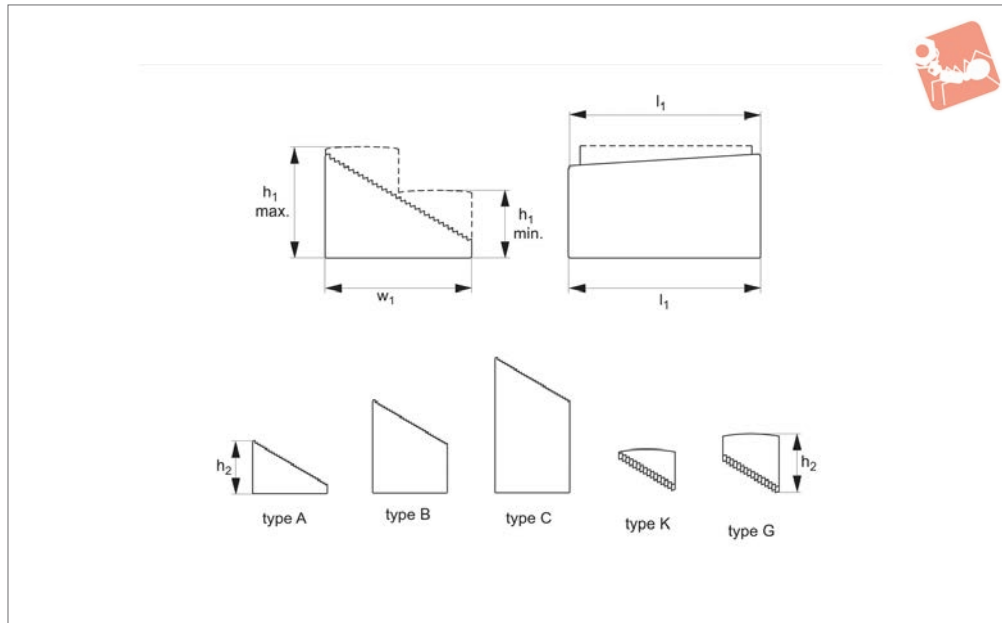
compatible with all our clamps. However, when used individually, they can be used with clamp no. 10020.

Order No.	Case size	Contents	h ₁ min.	h ₁ max.	Weight g
14020.W0100	280x155x40	8 pcs 14000.W0001 8 pcs 14000.W0002 4 pcs 14000.W0003	23	208	8400



Adjustable Step Blocks with spiral gearing

Screw Jacks



14040

SCREW JACKS

Material

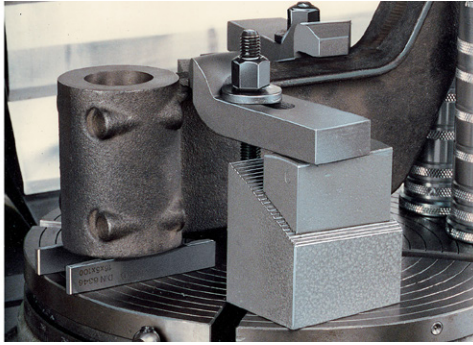
Steel, tempered and enamelled.

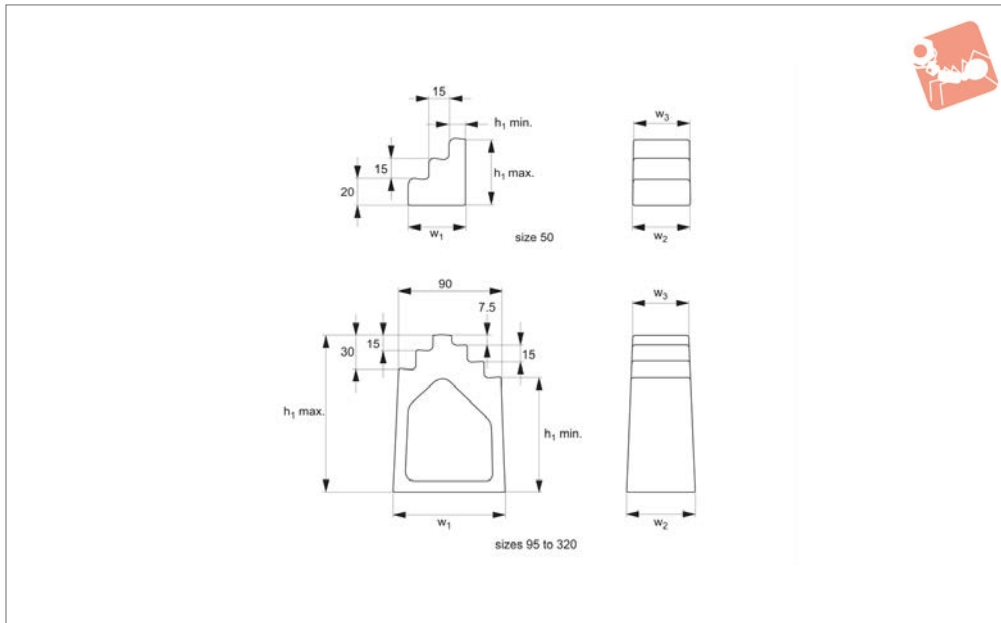
The tooth form is a metric profile to DIN 13 sheet 1 with a pitch of 2,5mm. It lies in the normal section of the setting level.

Technical Notes

DIN 6326.

Order No.	Type	Clamping height h_1 min.	Clamping height h_1 max.	Description	h_2	w_1	l_1	Lower part	Upper part	Single parts	Weight g
14040.W0001	A			Lower part	42	60	80			A	850
14040.W0002	B			Lower part	82	60	80			B	2300
14040.W0003	C			Lower part	122	60	80			C	3800
14040.W0004	K			Upper part	24	30	70			K	200
14040.W0005	G			Upper part	44	30	70			G	500
14040.W0014	A+K	25	45	Combination				A	K		1050
14040.W0015	A+G	45	65	Combination				A	G		1350
14040.W0017	A+K+G	25	65	Combination				A	KG		1550
14040.W0023	B+K	65	85	Combination				B	K		2500
14040.W0025	B+G	85	105	Combination				B	G		2800
14040.W0026	B+K+G	65	105	Combination				B	KG		3000
14040.W0034	C+K	105	125	Combination				C	K		4000
14040.W0035	C+G	125	145	Combination				C	G		4300
14040.W0036	C+K+G	105	145	Combination				C	KG		4500





14100

SCREW JACKS

Material

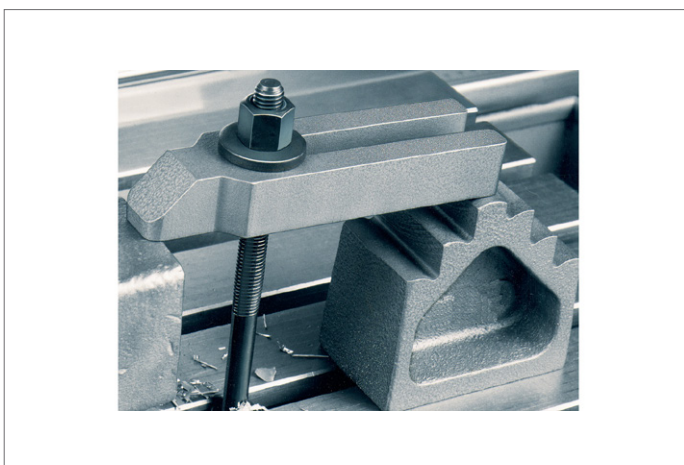
Cast iron, enamelled with support surface and steps milled.

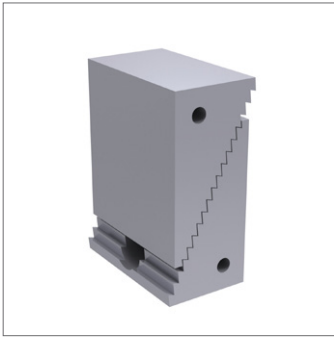
Technical Notes

Produced to DIN 6318.
See item no. 14150<X\14150#22> for

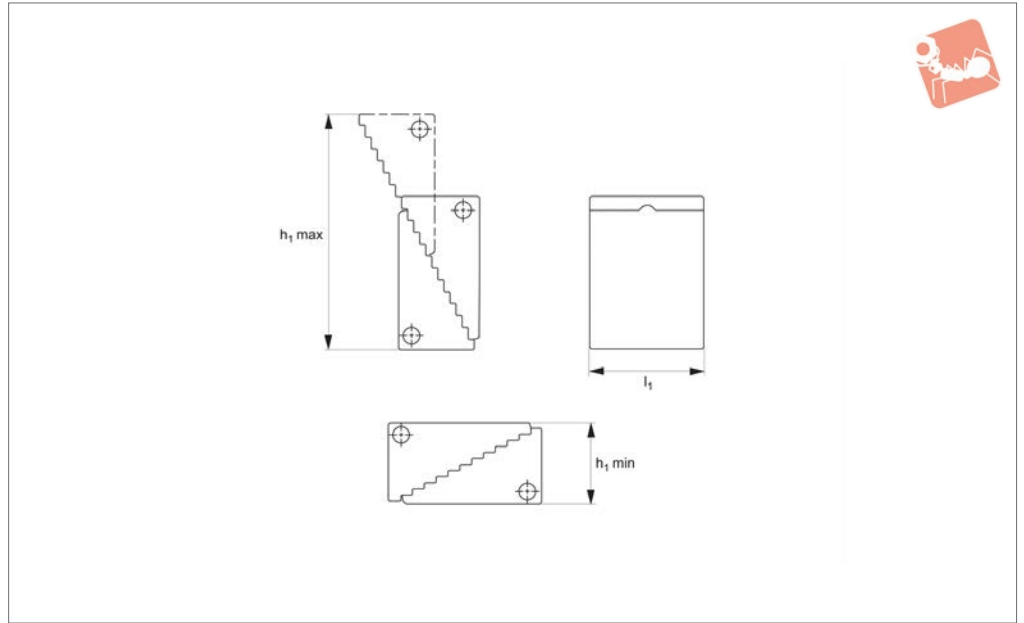
extra wide step blocks. Step increments of 7,5mm each.

Order No.	Size	h_1 min.	h_1 max.	w_1	w_2	w_3	Weight g
14100.W0050	50	12.5	50	42.5	50	50	500
14100.W0095	95	57.5	95	95.0	55	50	1600
14100.W0140	140	102.5	140	100.0	60	50	2000
14100.W0185	185	147.5	185	105.0	65	50	2900
14100.W0230	230	192.5	230	110.0	70	50	3600
14100.W0275	275	237.5	275	115.0	75	50	4300
14100.W0320	320	282.5	320	120.0	80	50	5200





14110



Material

Carbon steel, enamelled.

Technical Notes

Similar to no. 14000.W0002 but joined

together with a spring for ease of handling. Used vertically or horizontally. Step increments vertical 4,65mm, horizontal 2,30mm.

Order No.	Size	h_1 min.	h_1 max.	l_1	Weight g
14110.W0001	2	37	107	60	1000

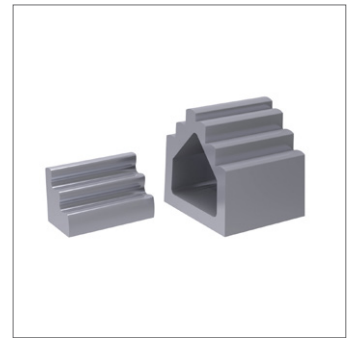
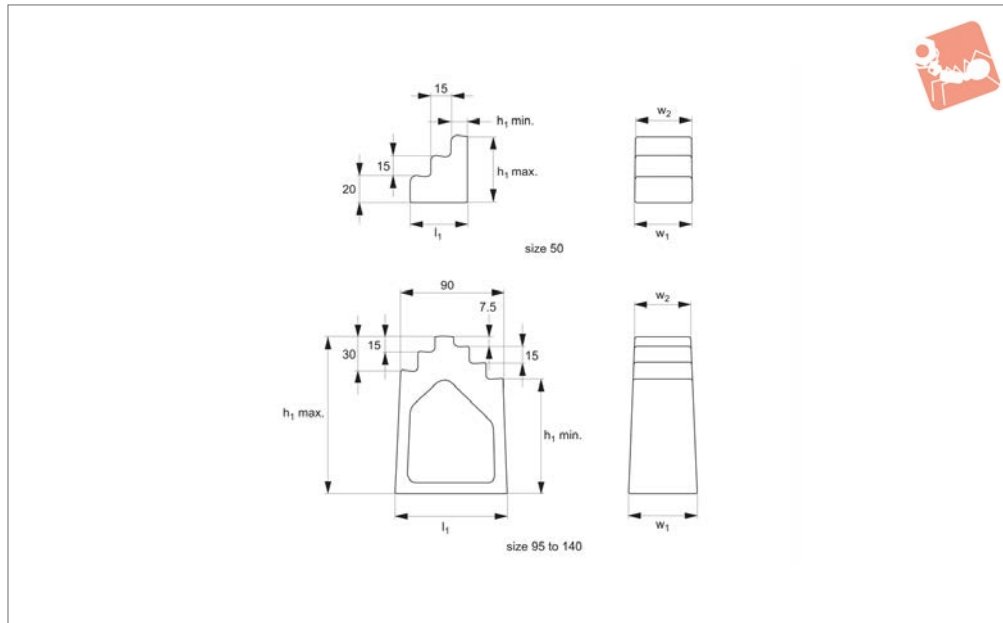


Step Blocks - Large

extra wide



Screw Jacks



14150

SCREW JACKS

Material

Cast iron, enamelled.
Base and step faces milled.

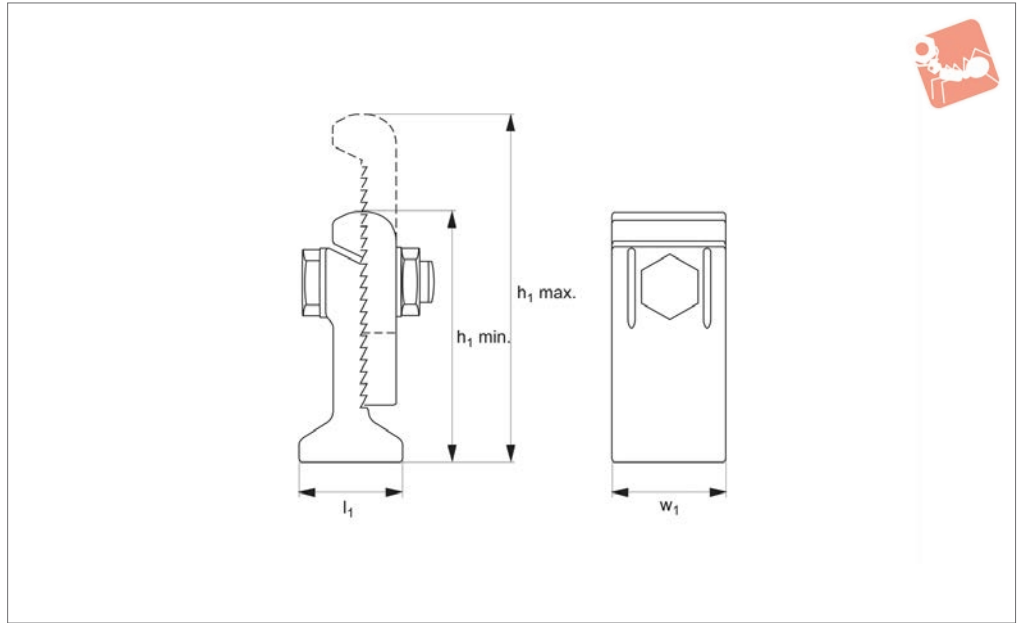
Technical Notes

Step increments of 7,5mm each.

Order No.	Size	h_1 min.	h_1 max.	w_1	w_2	l_1	Weight g
14150.W0050	50	12.5	50	80	80	42.5	800
14150.W0095	95	57.5	95	85	80	95.0	2300
14150.W0140	140	102.5	140	90	80	100.0	3450



14200



Material

Steel, malleable casting, enamelled.
Base and step faces milled.

Technical Notes

Step increments 5,2mm.

Order No.	Size	h_1 min.	h_1 max.	w_1	l_1	Static load kN max.	Weight g
14200.W0015	2	111	147	50	50	40	1225
14200.W0022	3	155	223	60	60	60	2607
14200.W0034	4	220	340	80	80	90	6028

